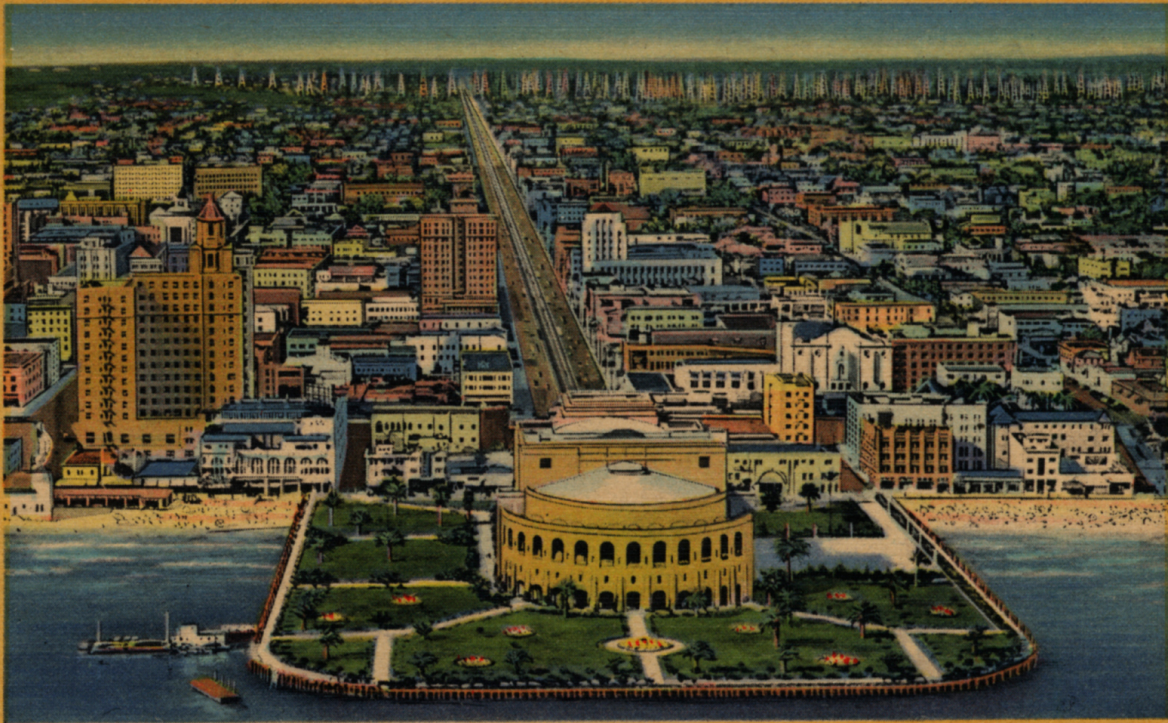


KODAK-SWEETY-FILM



Digitally reproduced by the USC Digital Archive (c)2004, California Historical Society: California Historical Society, CHS-14353

*L-31 A Portion of Long Beach, California,*



*Showing Municipal Auditorium in Foreground and Famous Oil Fields in the Distance*

7A-H3658



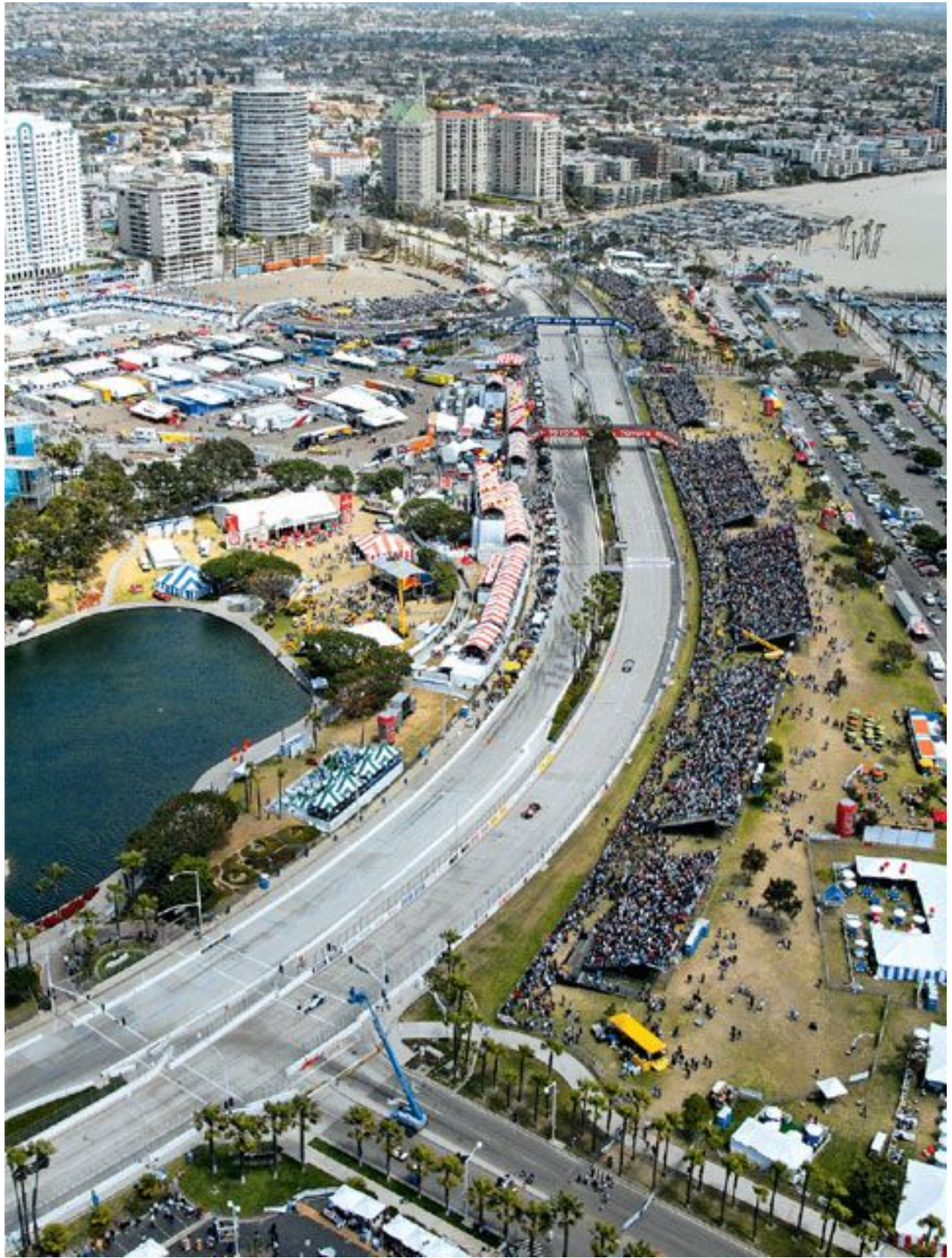














# 2007 TOYOTA GRAND PRIX OF LONG BEACH CIRCUIT MAP



LEGEND	
	VISION BOARD BIG SCREEN
	YELLOW SIGNAGE (AS CURRENTLY SCHEDULED)
	PEDESTRIAN BRIDGE
	WHEELCHAIR ACCESSIBLE GRANDSTANDS (7, 17, 21, 26, GA)
	SUNDAY ONLY GRANDSTANDS (6, 7, 17, 18, 26, 27, 28, 40)
	SMC FOOD COURTS
	POST/WHEELCHAIR CROSSING
	SUPER PHOTO LOCATIONS
	ATM
	3 DAY GRANDSTANDS (6, 7, 17, 18, 26, 27, 28, 40)
	TECATE CANTINA
	PLAYA TECATE

**TOYOTA**
**TELATE**
**GEHL**
**verizon**

**BRIDGESTONE**
**Aerobics**
**SEGWAY**
**King Taco**
**Canon**

**E-Z-LUBE**
**SALONPAS**
**REGISTER**
**Press-Telegram**
**IMPERIAL CAPITAL BANK**









LOCAL STREET RECONSTRUCTION

EXISTING RW LINE

SOUND WALL

GLISH UNIT CONVERSIONS

ft

ft



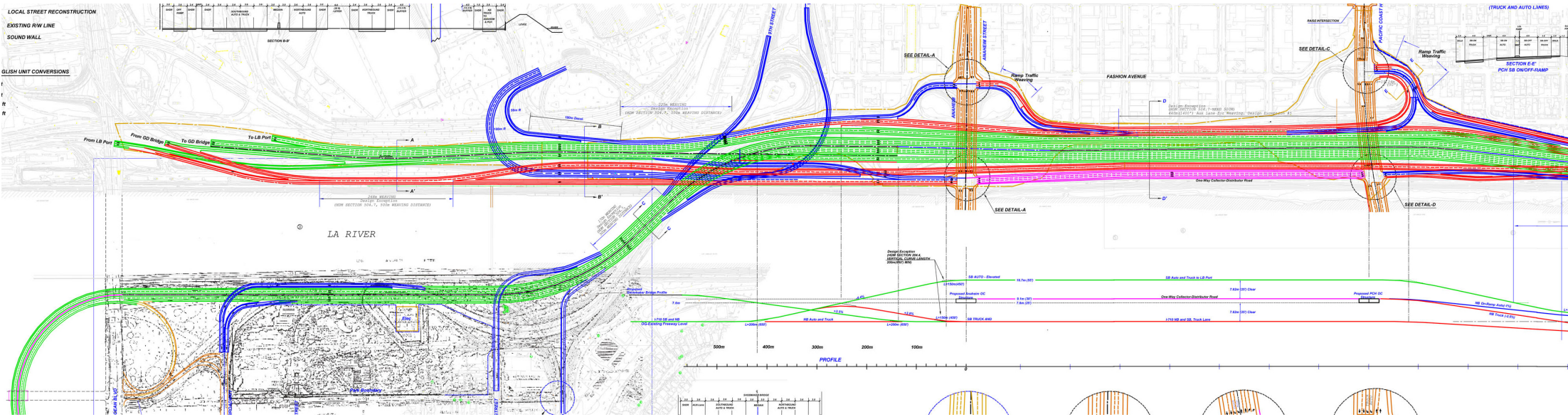
(TRUCK AND AUTO LINES)

SECTION E-E

PCH SB ON/OFF-RAMP

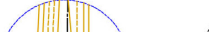
ft

ft

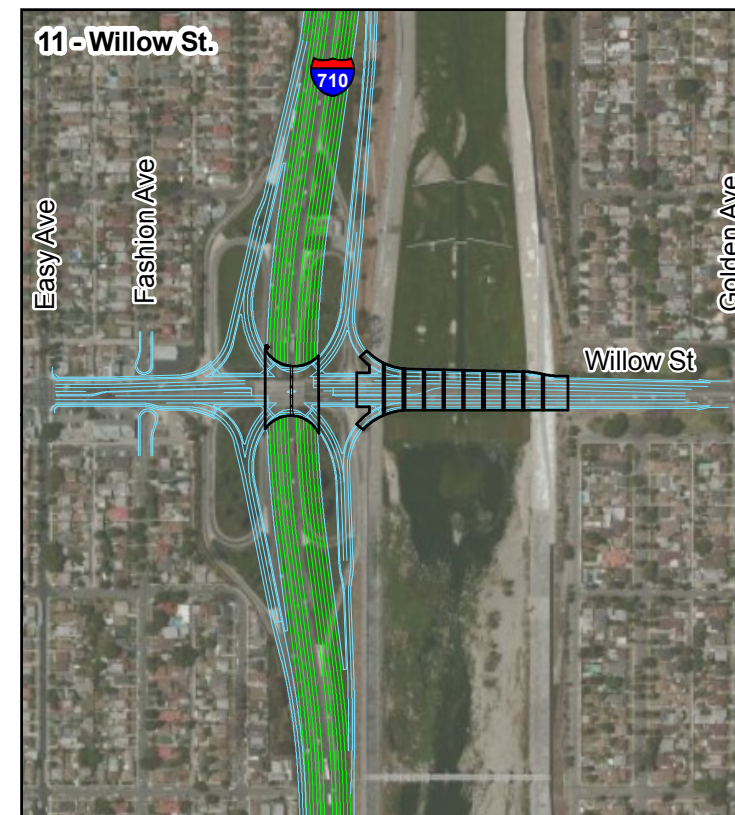
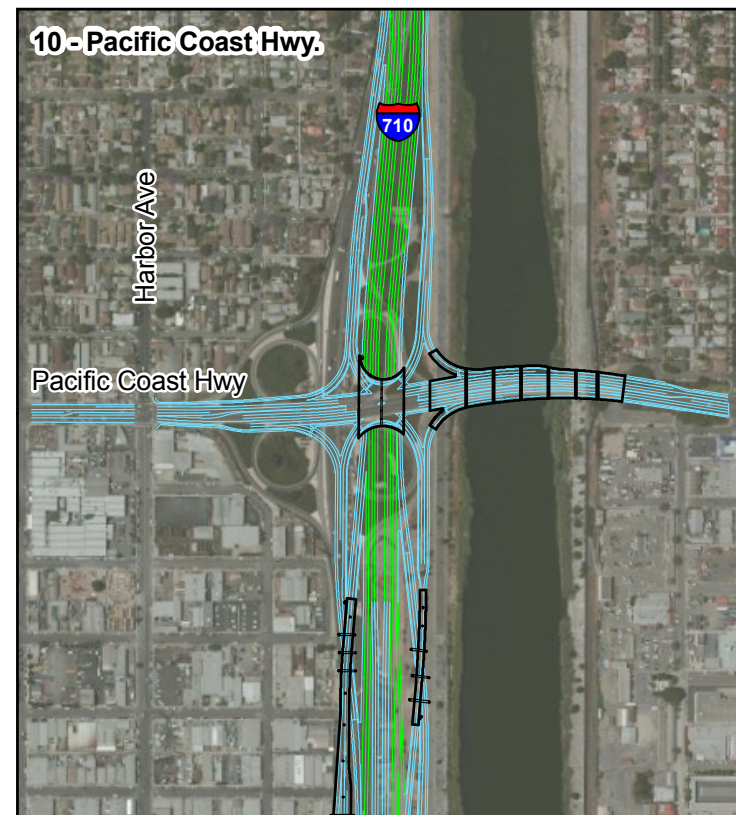
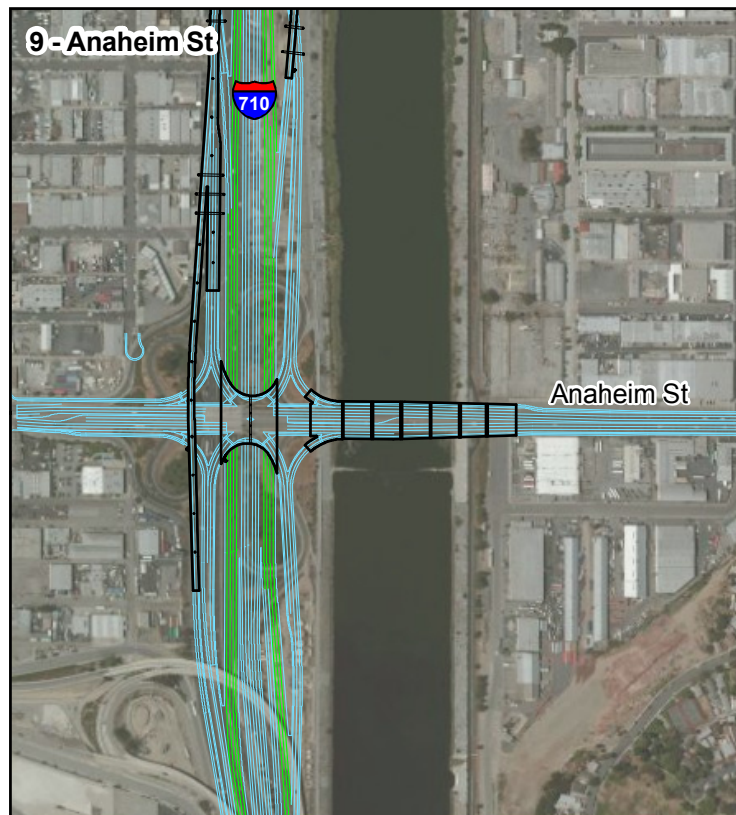
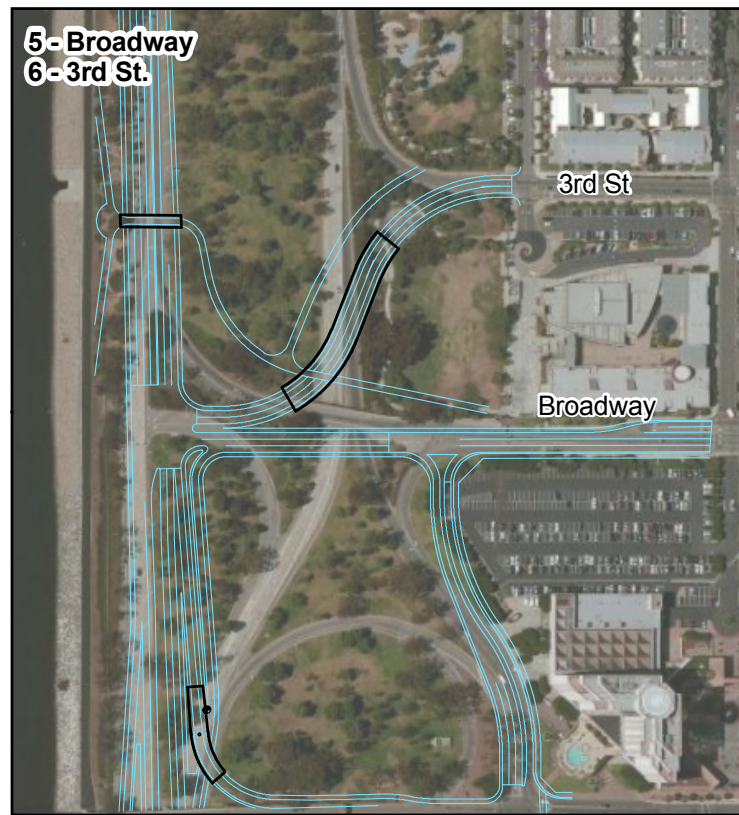
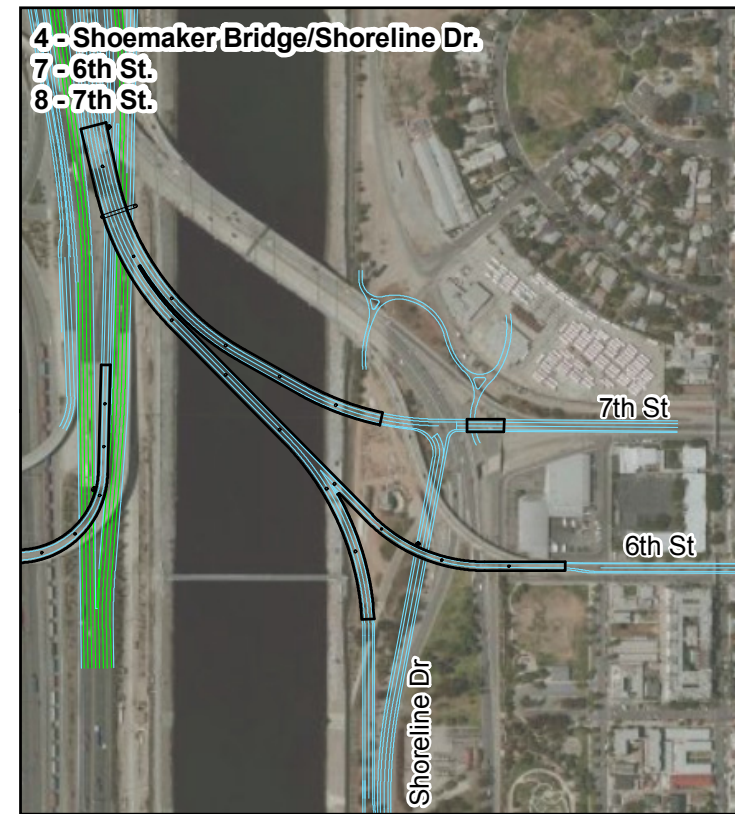
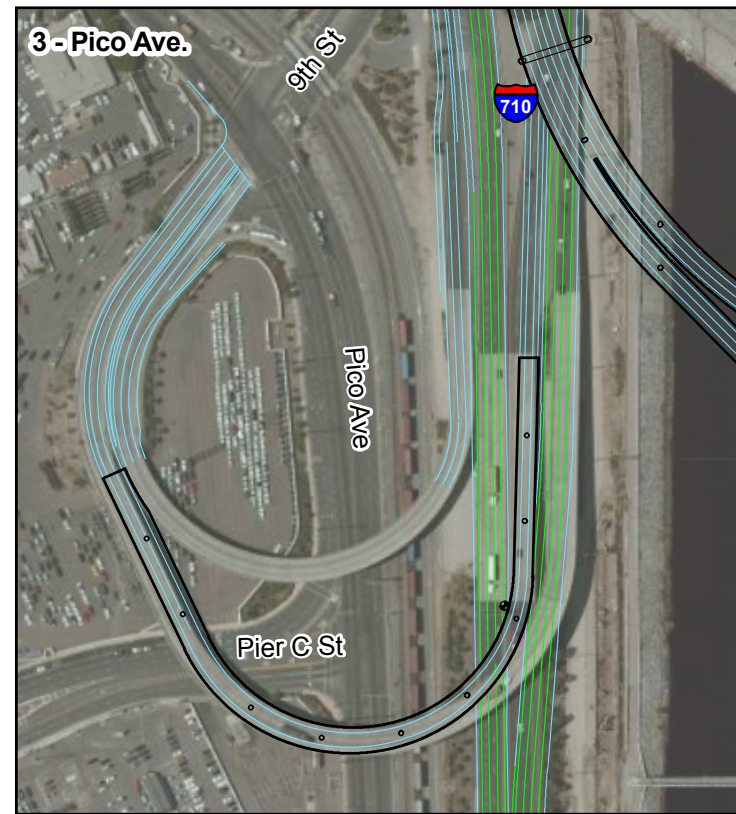
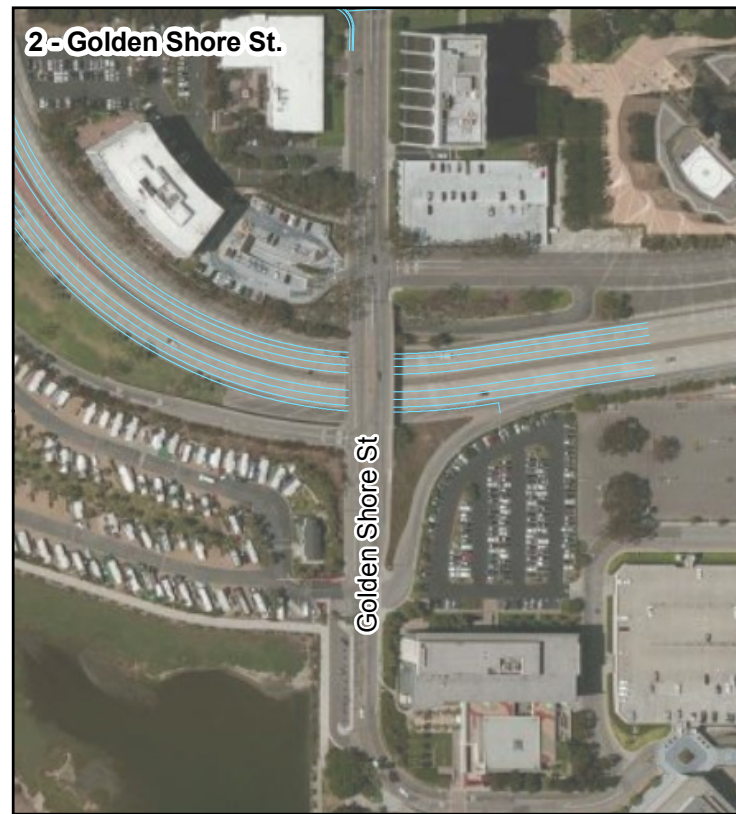
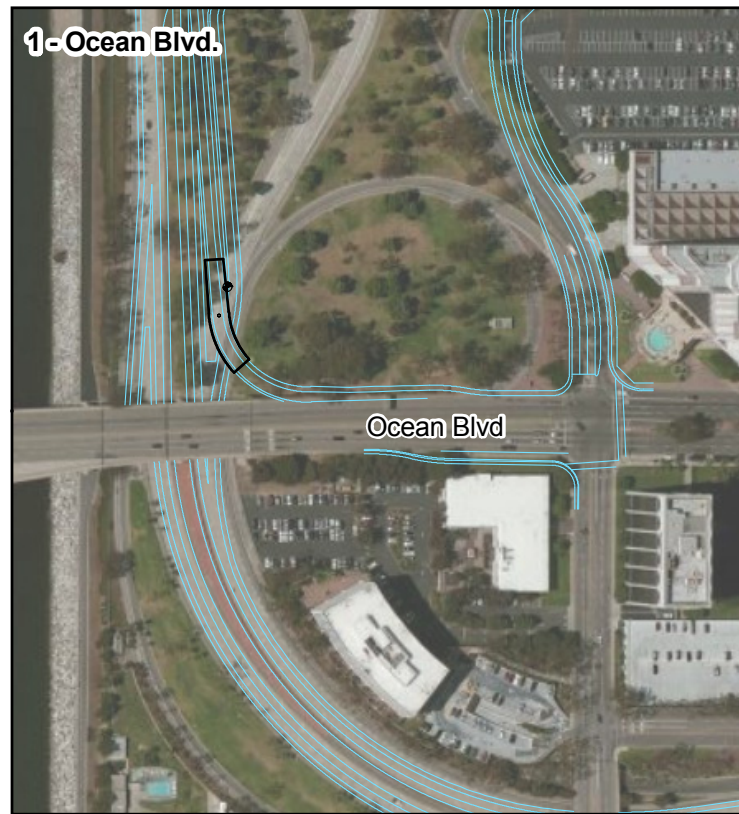


LA RIVER

PROFILE







LEGEND

- Mainline
- Ramps, Collectors and Distributors
- Elevated Structure



NO SCALE

SOURCE: Bing Maps (c.2008)

FAURS0801A\GIS\EIR\_EIS\Interchange\_Mapping\_1-11\_Alt5.mxd (6/12/12)

FIGURE 2.4-2

Sheet 1 of 3

I-710 Corridor Project EIR/EIS  
Alternative 5A Improvements to Local Arterial  
Interchanges, Crossings, and Frontage Roads

PM 4.9/24.9  
EA 249900



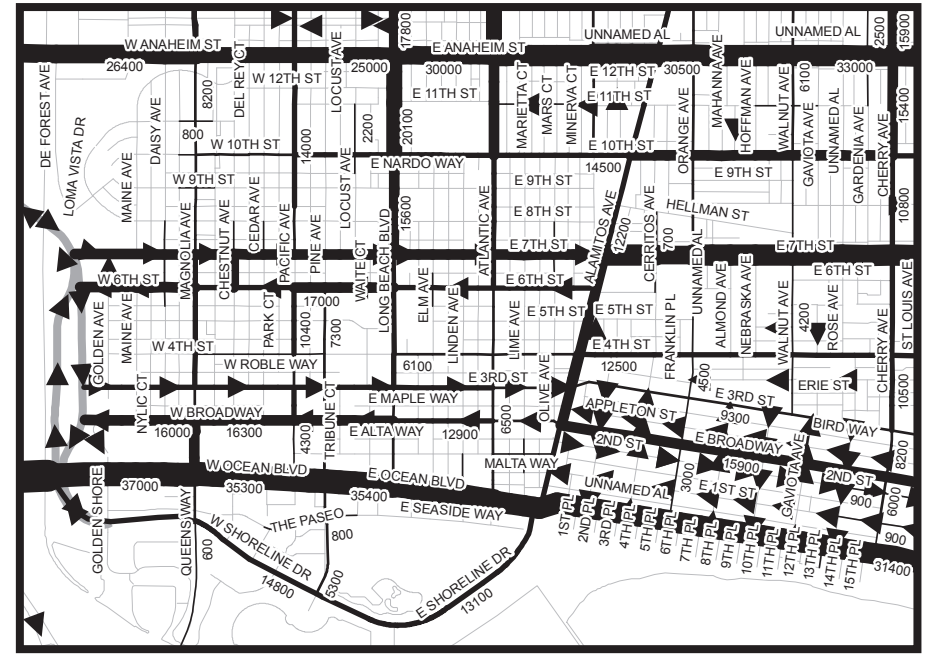


# 2001 CITYWIDE TRAFFIC FLOW DEPARTMENT OF PUBLIC WORKS TRAFFIC & TRANSPORTATION BUREAU

## MAP FEATURES

### ADT Volumes

- 0 to 5,000
- 05,001 to 10,000
- 10,001 to 15,000
- 15,001 to 20,000
- 20,001 to 25,000
- 25,001 to 30,000
- 30,001 to 35,000
- 35,001 to 40,000
- 40,001 to 45,000
- 45,001 to 50,000
- 50,001 to 55,000
- 55,001 to 60,000



### DOWNTOWN AREA





## PROJECT GOALS

**REPLACEMENT SPACE** Create open space to replace existing lawn used for Aquarium development.

**IMPROVE TRAFFIC FLOW** Extend street network to Chestnut Avenue from Aquarium Way.

**CONSOLIDATE LAYOVER** Relocate bus loading into single area with better access to major streets.

**RETAIN CIRCUIT** Avoid reconfiguration of Grand Prix racetrack along northbound Chestnut Avenue.

**GRAND PRIX ACCESS** Provide northbound access along Chestnut Avenue during Grand Prix.

**OPTIMUM RESOLUTION** Develop viable open space replacement plan for obtaining Coastal Commission approval.



Chestnut Avenue - looking south

## CONCEPT

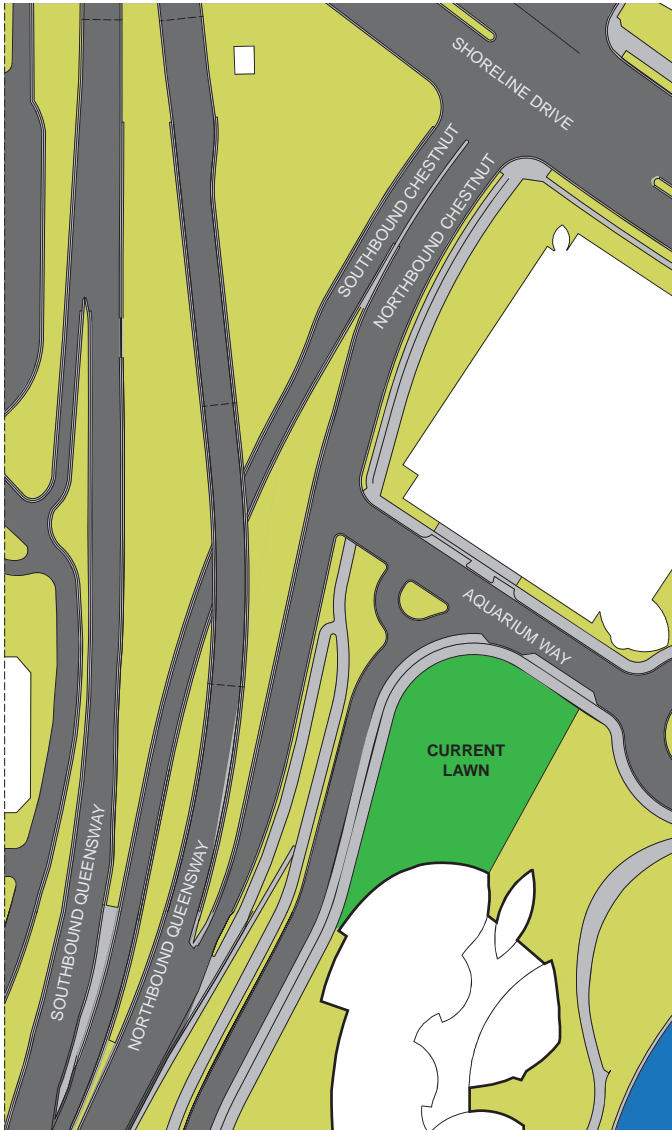
Queensway Meadow is a proposal to reconfigure Chestnut Avenue between the Queensway Bridge and Shoreline Drive, creating an acre of new public open space that will replace the lawn in front of the Aquarium of the Pacific to be used for their proposed expansion. The concept is to expand the southbound portion of Chestnut Avenue to include northbound traffic and connect Aquarium Way from the east. The existing northbound Chestnut Avenue between Aquarium Way and Shoreline Drive would be converted to bus parking serving the Aquarium while retaining the current Long Beach Grand Prix circuit. The northbound Chestnut Avenue south of Aquarium Way is then transformed to open space to better serve visitors of the Aquarium as the current lawn has.



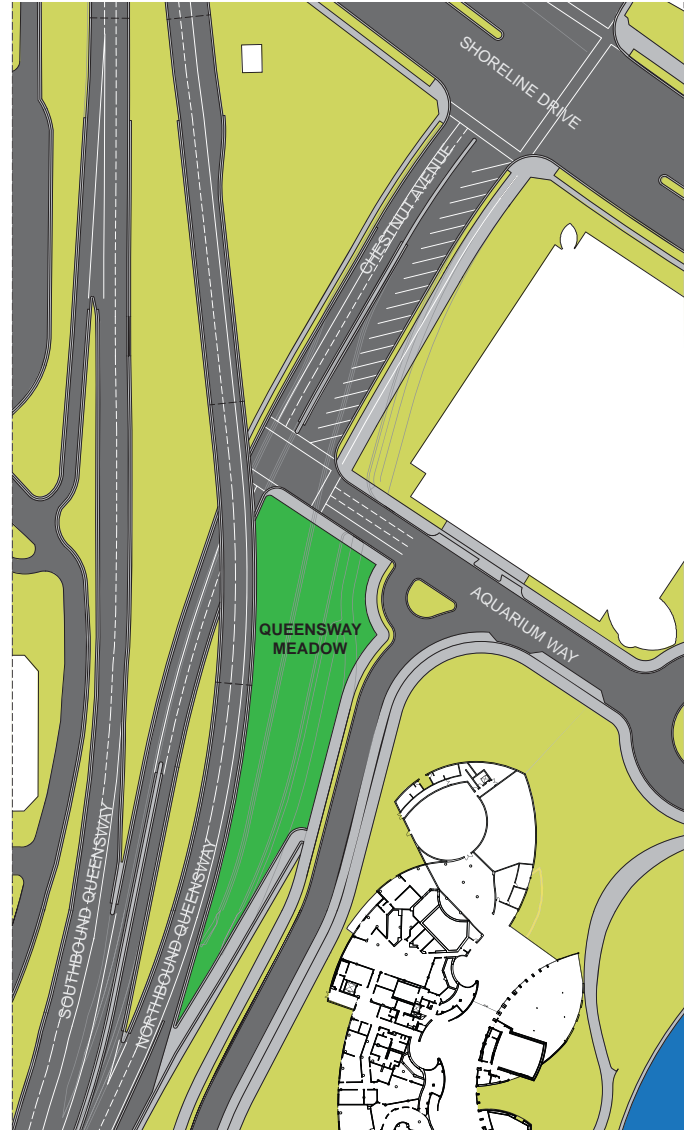
Queensway Meadow Proposal - looking south



# QUEENSWAY MEADOW



Area Plan - Current Condition



Area Plan - Proposed Concept

## HISTORY

Formerly part of the Pacific Ocean, the downtown waterfront was extended a quarter-mile into the sea as part of land reclamation. The area has since been populated by large-scale development and over-engineered infrastructure. The waterfront has also hosts the Long Beach Grand Prix, the single largest event in the city which for two weekends a year Shoreline Drive and adjacent streets become a racetrack. These choices have created a veritable pedestrian wasteland of disconnected developments separated by freeways, parking lots and massive structures. Important community assets such as the Aquarium of the Pacific and Rainbow Lagoon are next to impossible to access with any mode other than an automobile or bus.

## CURRENT

To accommodate growing attendance, the Aquarium of the Pacific will be expanding its facility by 14%, using much of their remaining ground lease area, including the front lawn for the larger footprint. The city has approved the expansion project but the California Coastal Commission has expressed concerns for the loss of the heavily used open space and had not accepted a replacement plan for the open space a half-mile away. The Queensway Meadow proposal would provide a viable replacement of open space within close proximity of the Aquarium. The new park can be created without property acquisition and can result in better circulation and visibility, all without impacting the Grand Prix racetrack.

## QUESTIONS

Contact: Brian Ulaszewski

bulaszewski@hotmail.com

323.309.7932