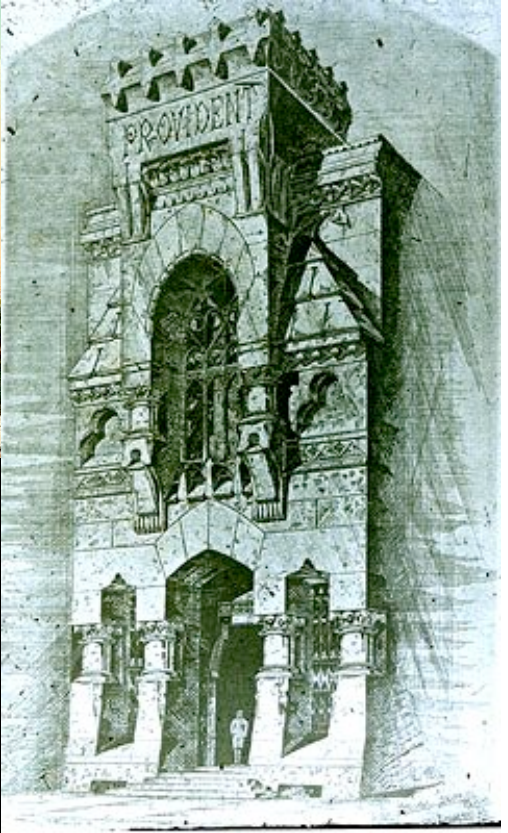
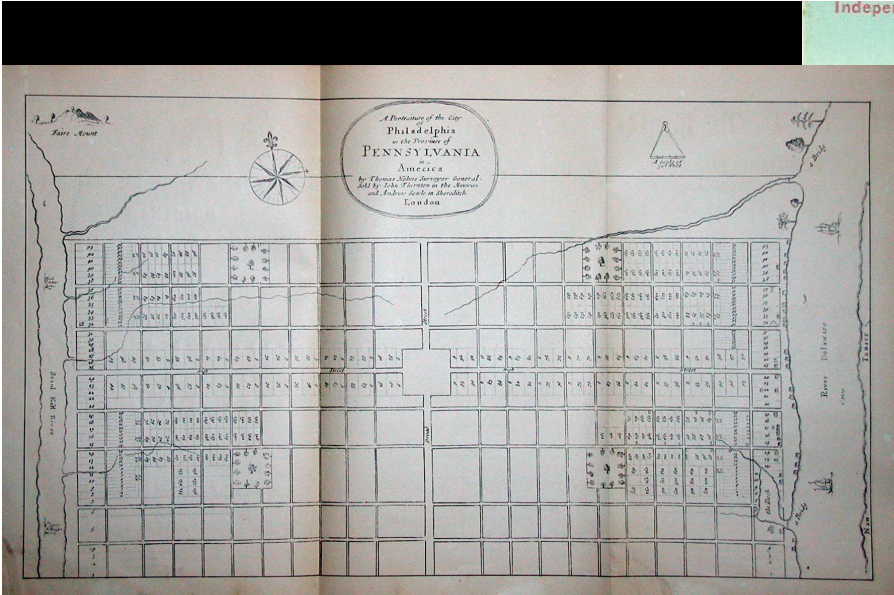


Independence Hall, Philadelphia, Pa.



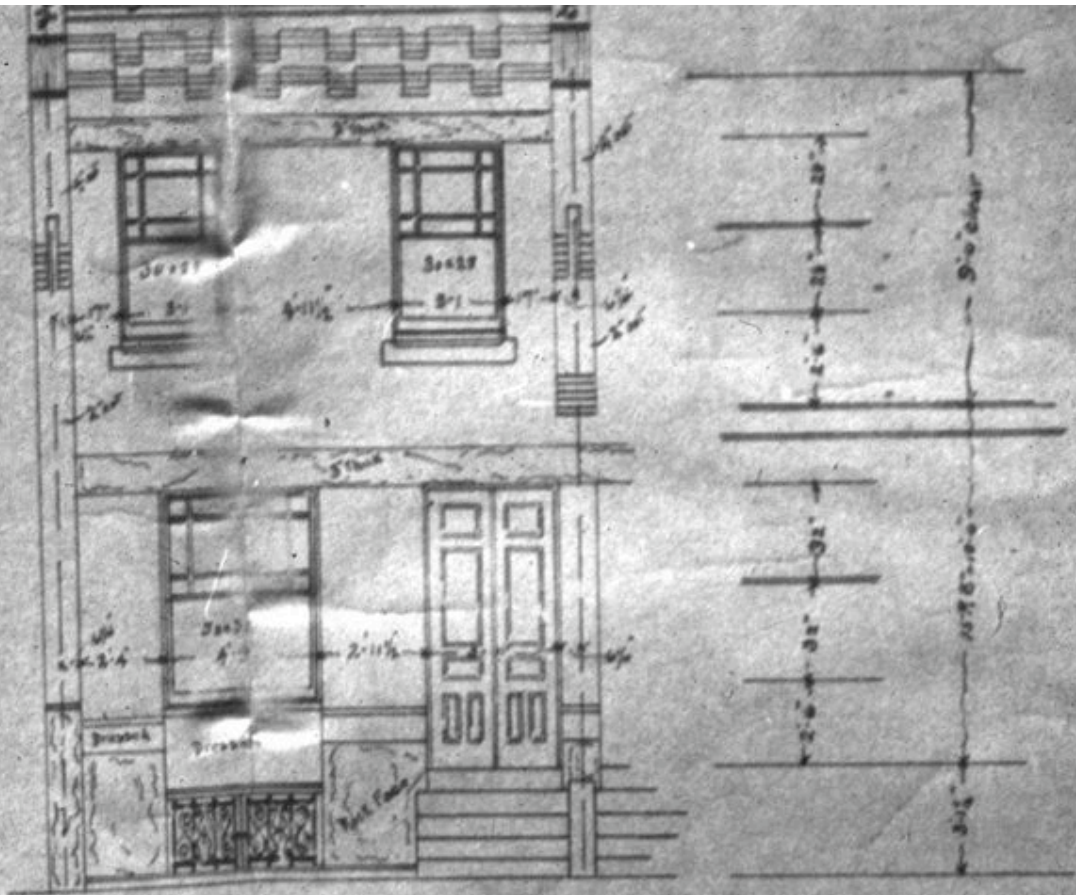




FOR SALE
Apply at
P. J. TWHELAN
PHONE 2-450

THESE HOUSES FOR SALE
Apply at OFFICE
P. J. TWHELAN
PHONE 2-450
SEE US ABOUT TERMS





Elevation

Scale $\frac{1}{4}'' = 1'$

Allen Wilson
Architect

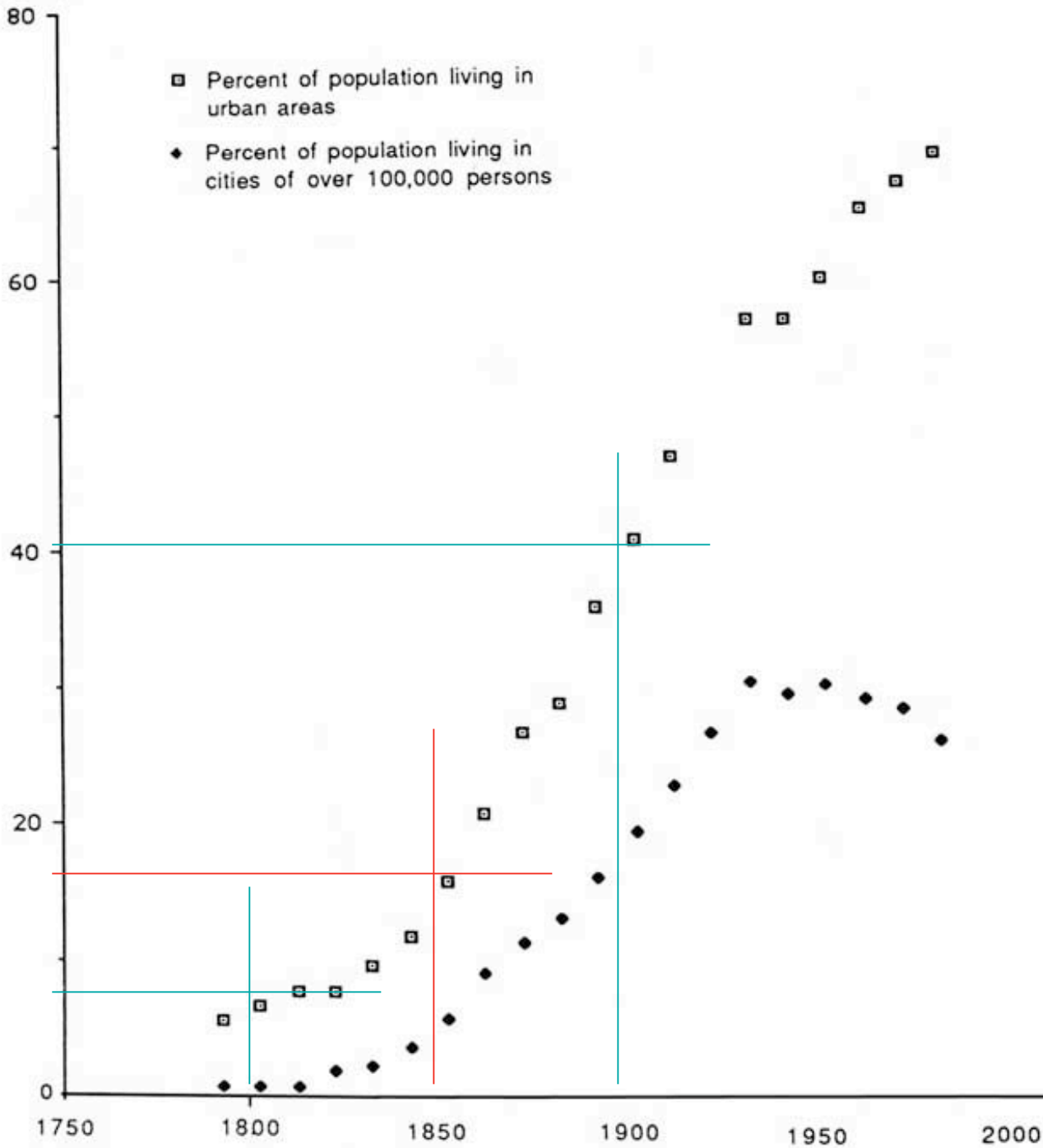
2532 N. Broad

Phila.



Copyright, 1900, by Moses King

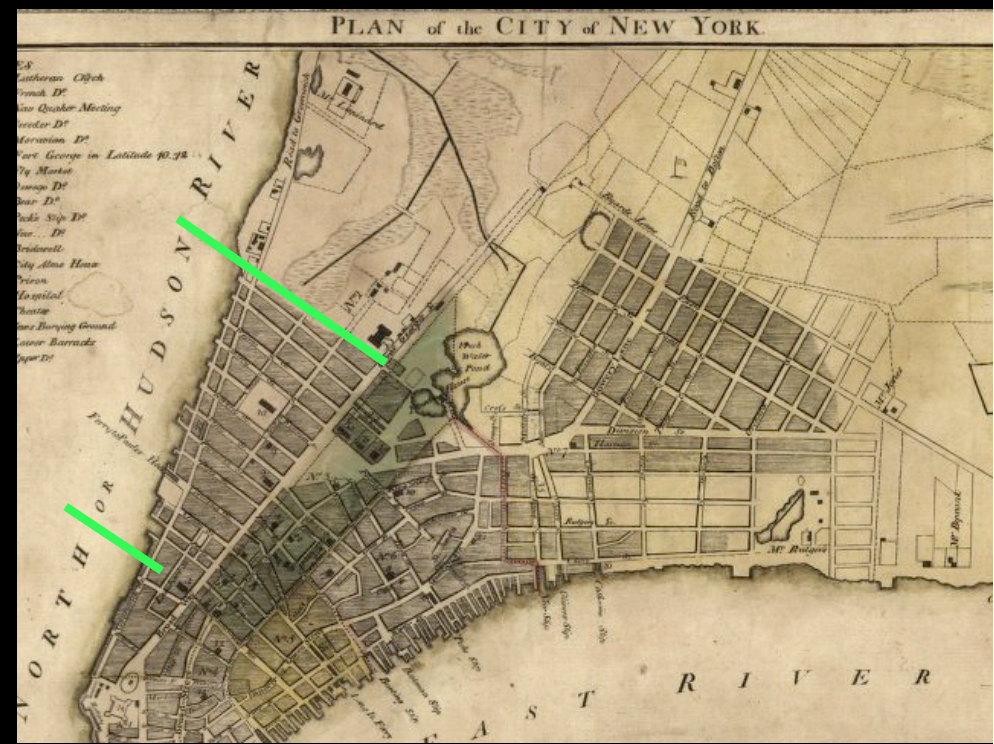
Percent



1852



1789





Bachmann, 1857

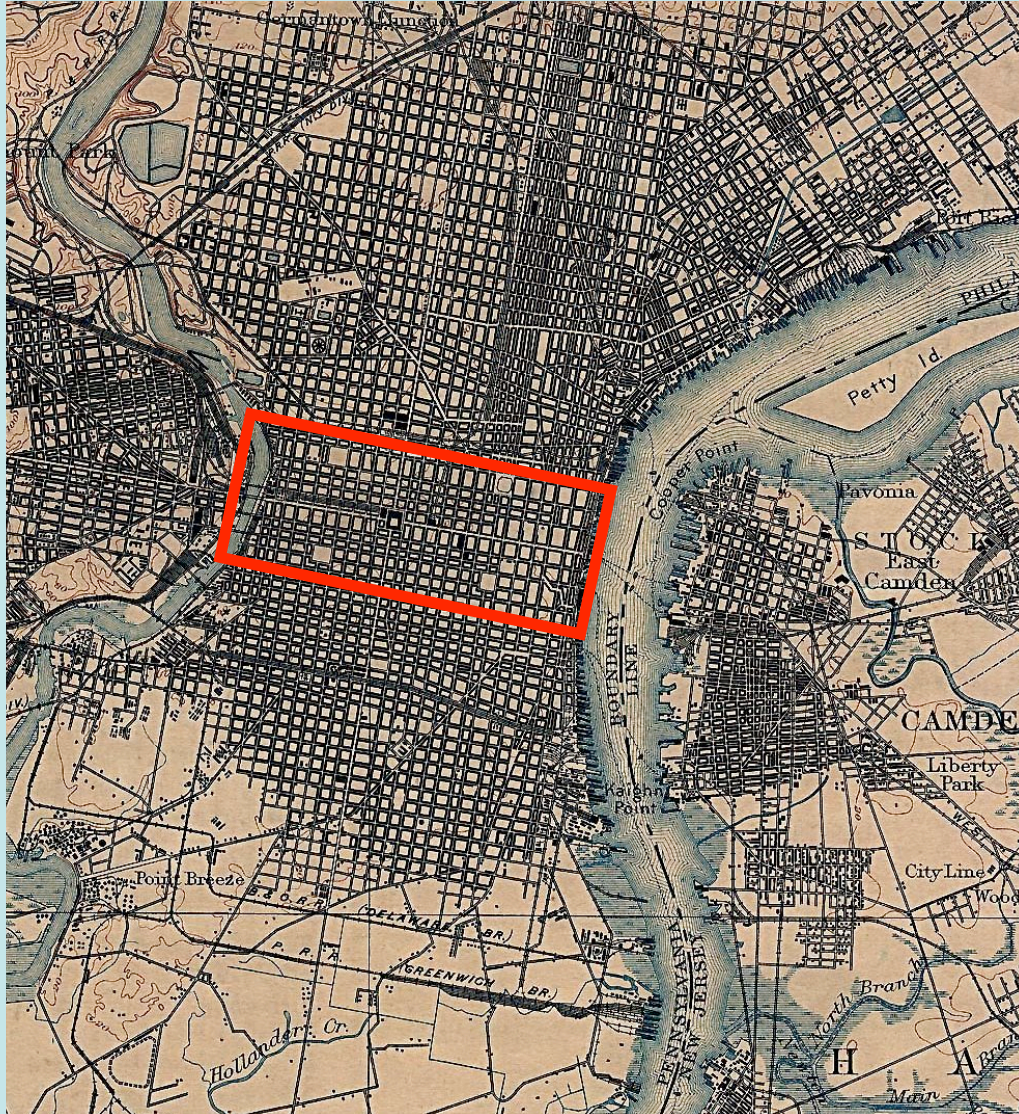


1876, total number of dwellings houses: 143,936

(x 5 = 715,000)

1870 city pop: 674,022

1880 city pop: 846,980



Dwellings, 1876, in different parts of Philadelphia

NW: 9,000

NP: 26,000

NE: 29,000

SG: 20,000

WP: 9,000

CC: 20,000

SP: 31,000

Occupants per dwelling in Philadelphia, New York, Boston, and Chicago, 1880-1910

	1880	1890	1900	1910
Philadelphia	5.79	5.60	5.40	5.20
New York	16.37	18.52	13.70	15.60
Boston	8.26	8.52	8.40	9.10
Chicago	8.24	8.60	8.80	8.90

from John F. Sutherland, "Housing the Poor in the City of Homes," table 9.2,
in Allen F. Davis and Mark H. Haller, eds., The Peoples of Philadelphia (Philadelphia, 1973).

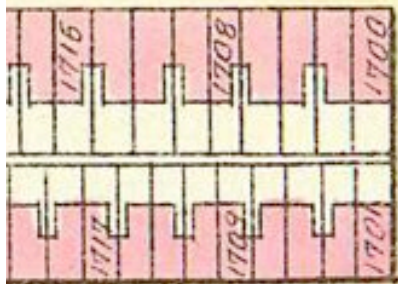


2501-2505 Ellsworth Street, 5/4/1916.

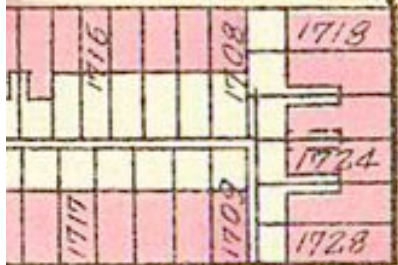


© 2007 Sanborn
© 2007 Europa Technologies
© 2007 Navteq

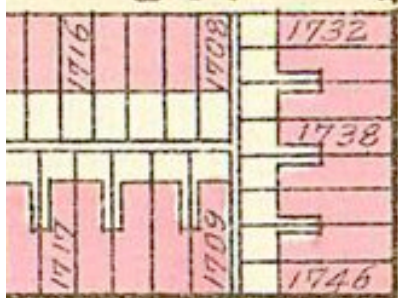
S



ST.



ST.



19

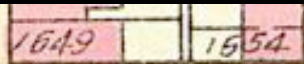
116.3

95

98

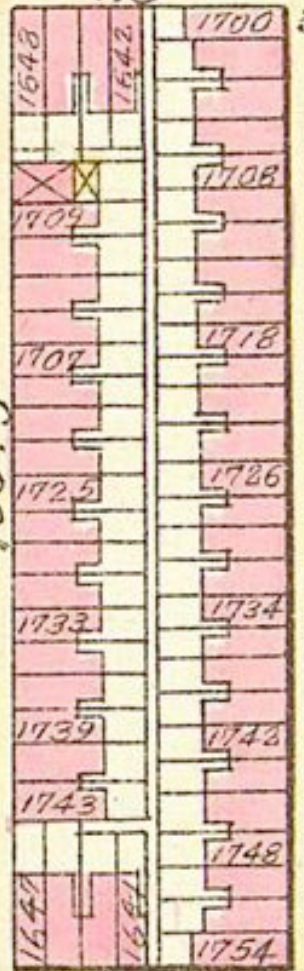
35

116



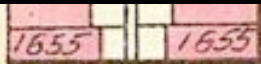
117.4

115



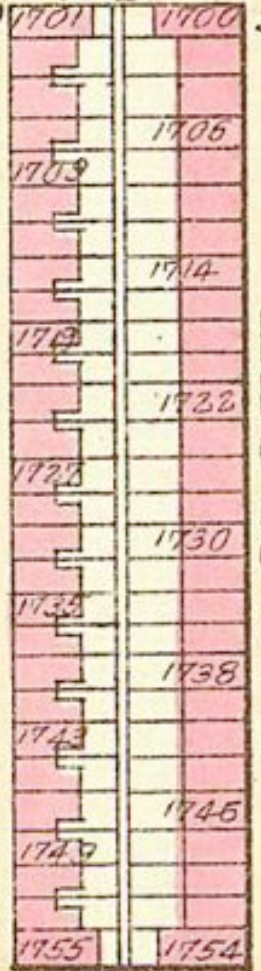
400.3

115

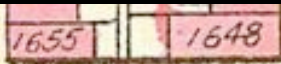


103.16

106

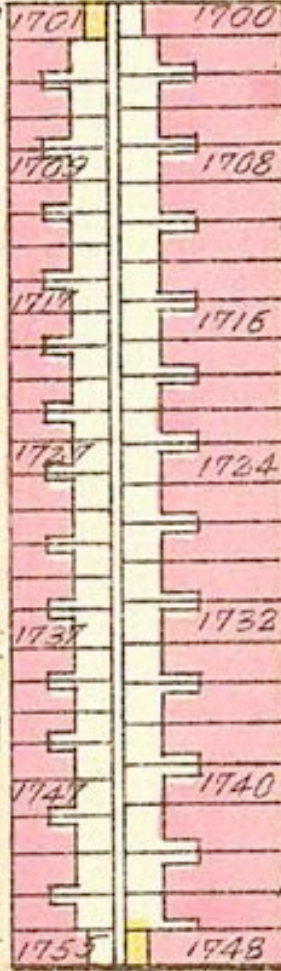


106



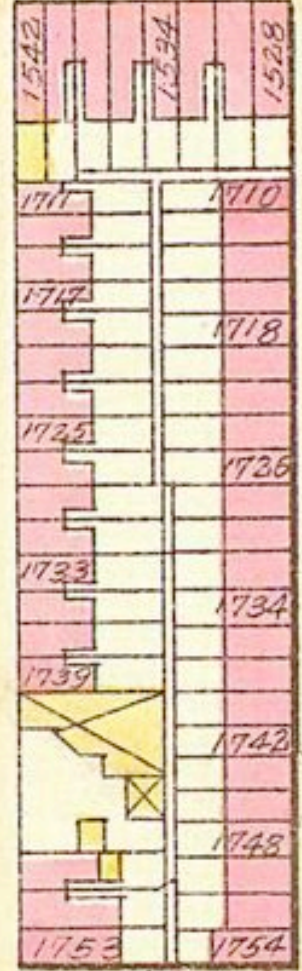
115.50

115



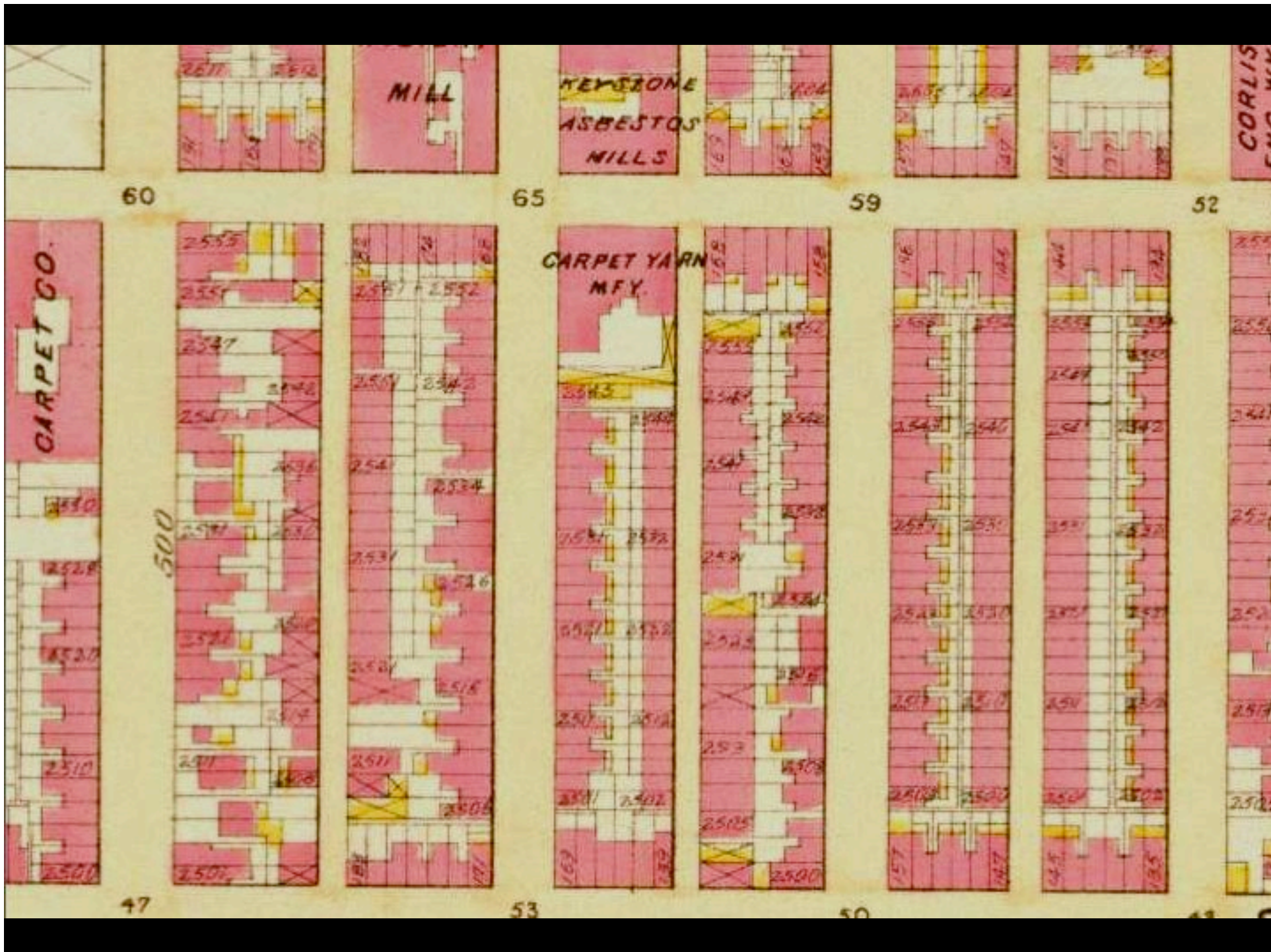
115

19



118

BANCROFT



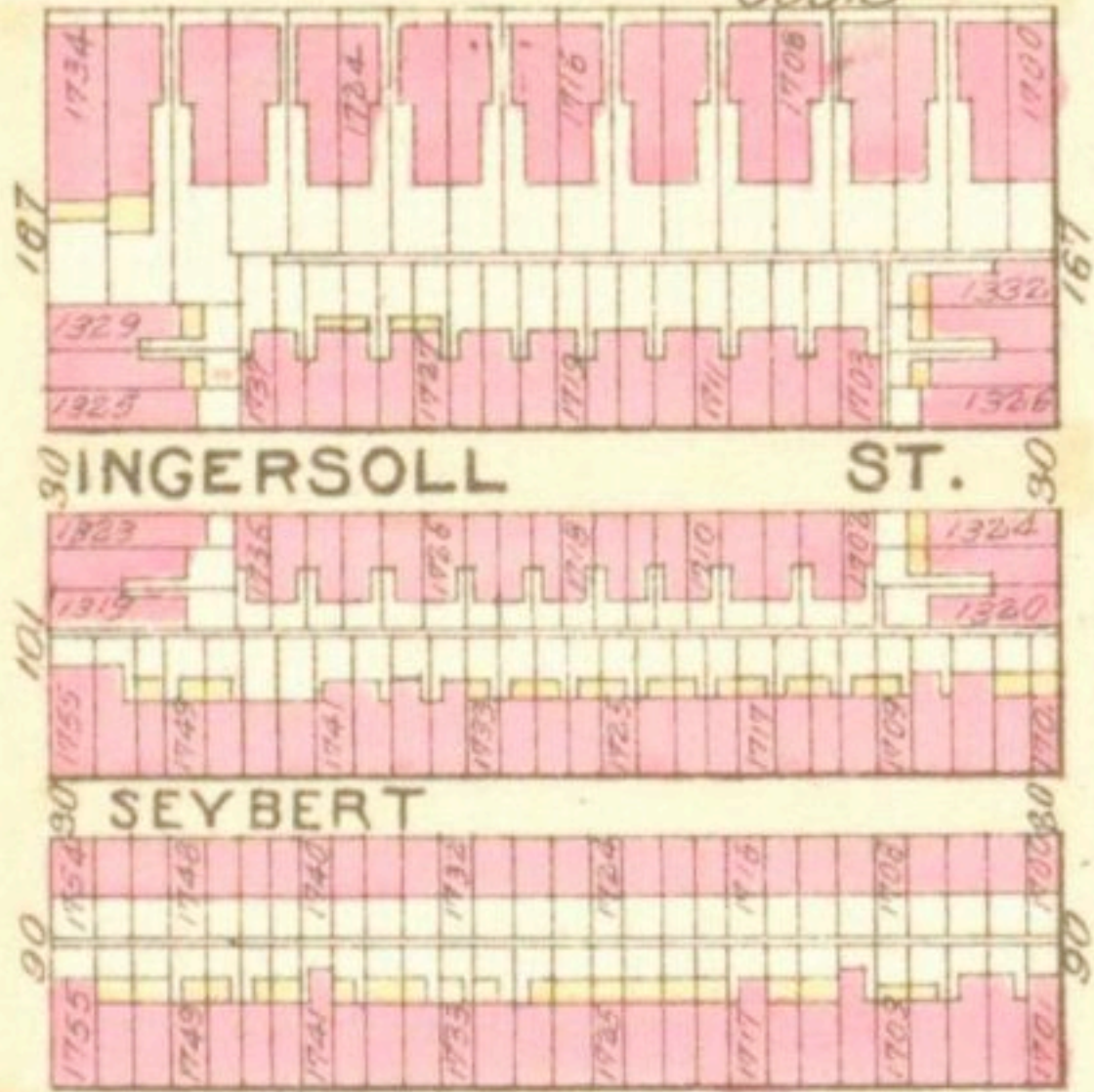
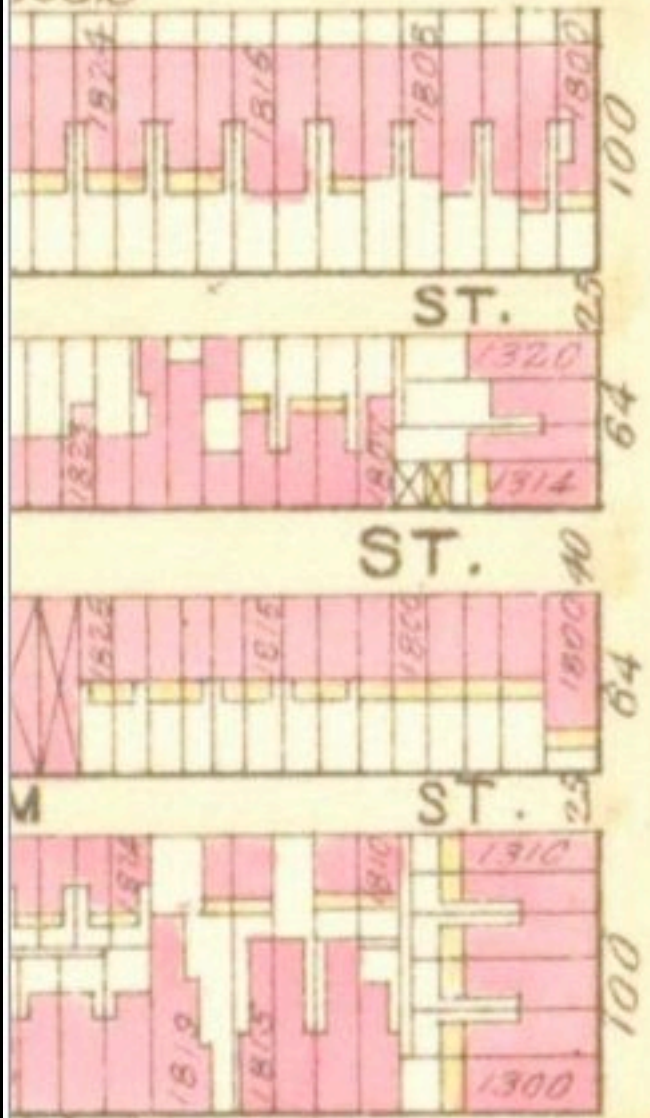




MASTER

995.8

995.8



995.8

97

THOMPSON

87

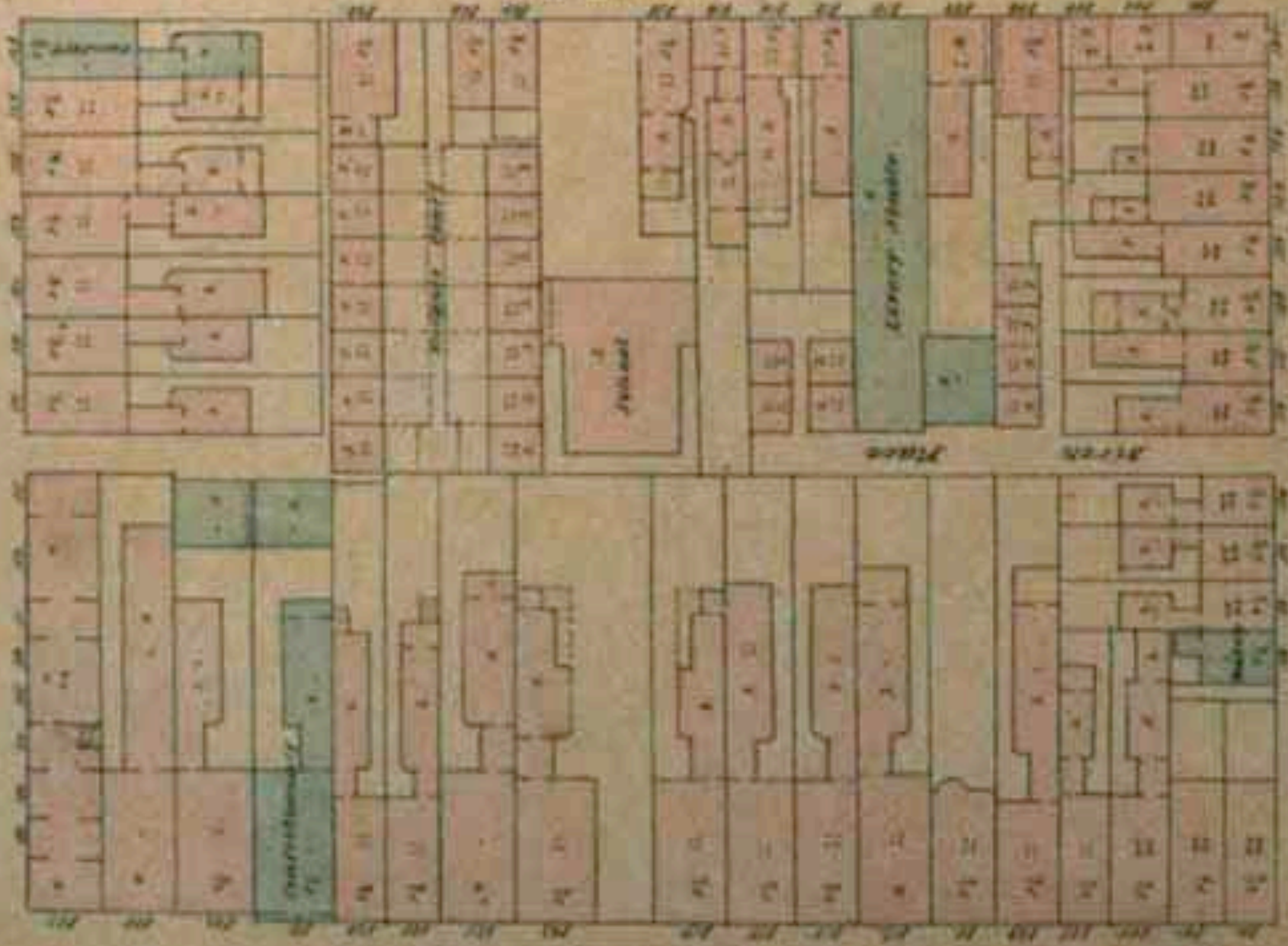
CHERRY STREET

N
I
N
T
H

S
T
R
E
E
T

E
I
G
H
T

S
T
R
E
E
T



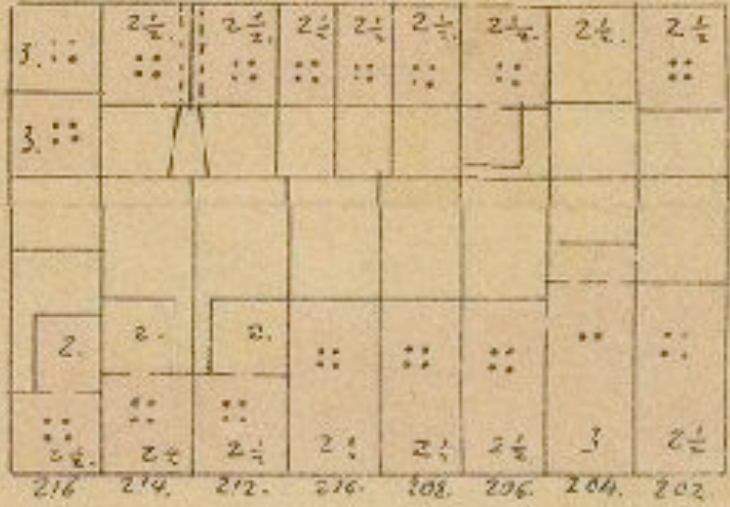
ARCH STREET

2.
S.P.A.
Cabin
Maxim

Lylog
1.
2.

Poplar Court

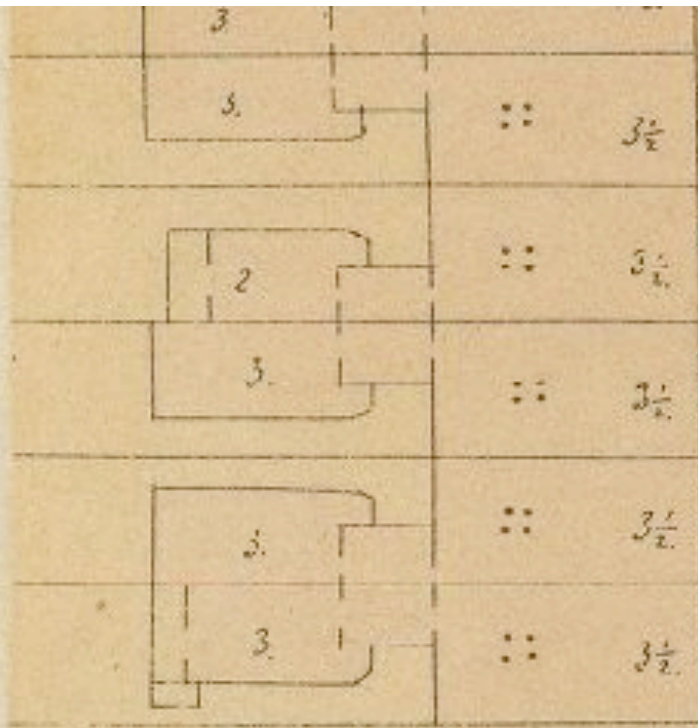
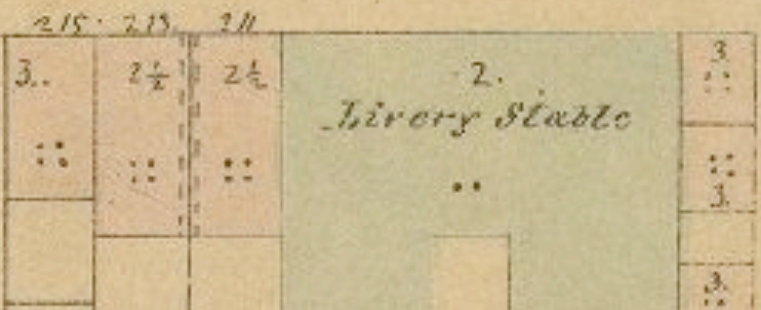
Plumb Alley



Alley

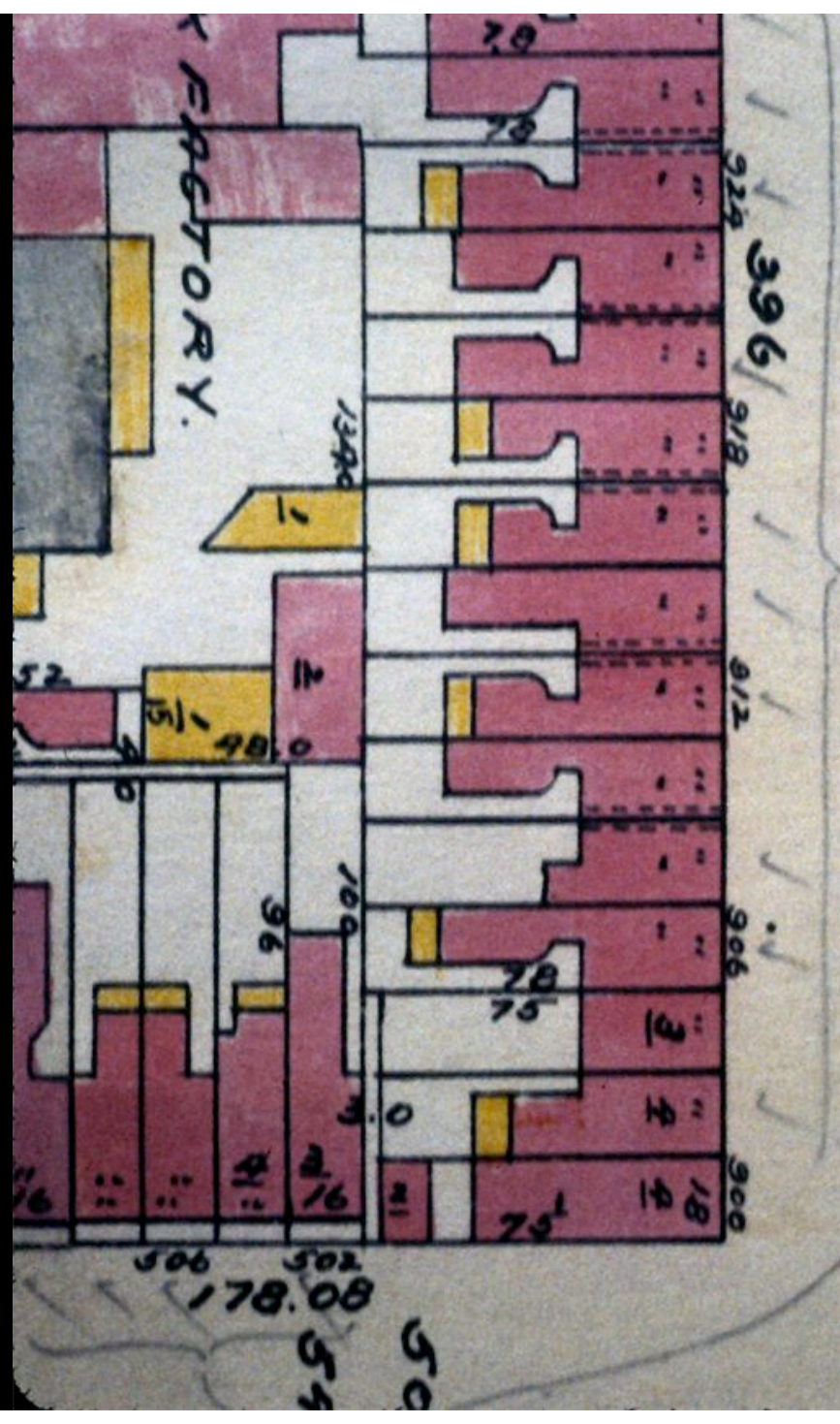
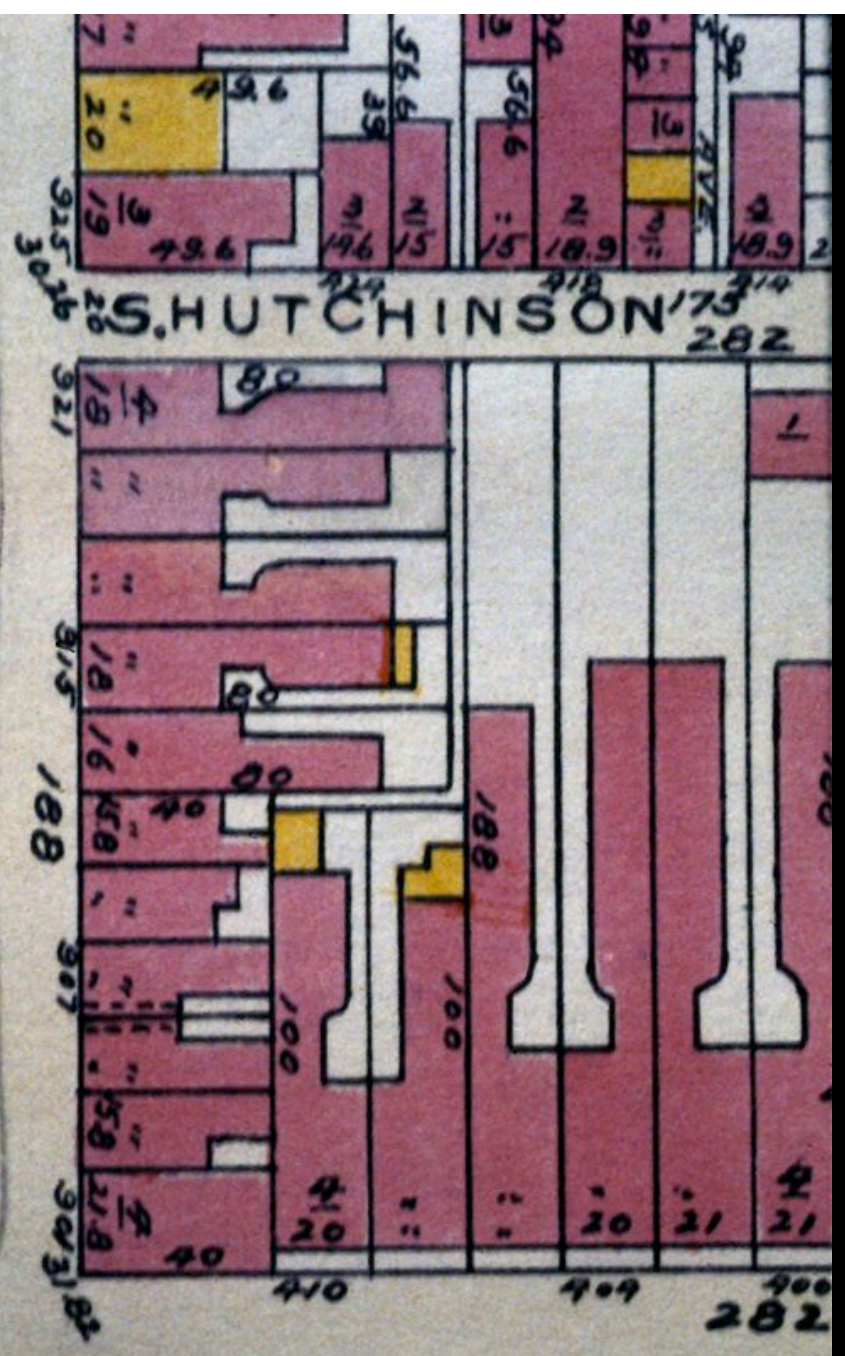
STREET

Miles

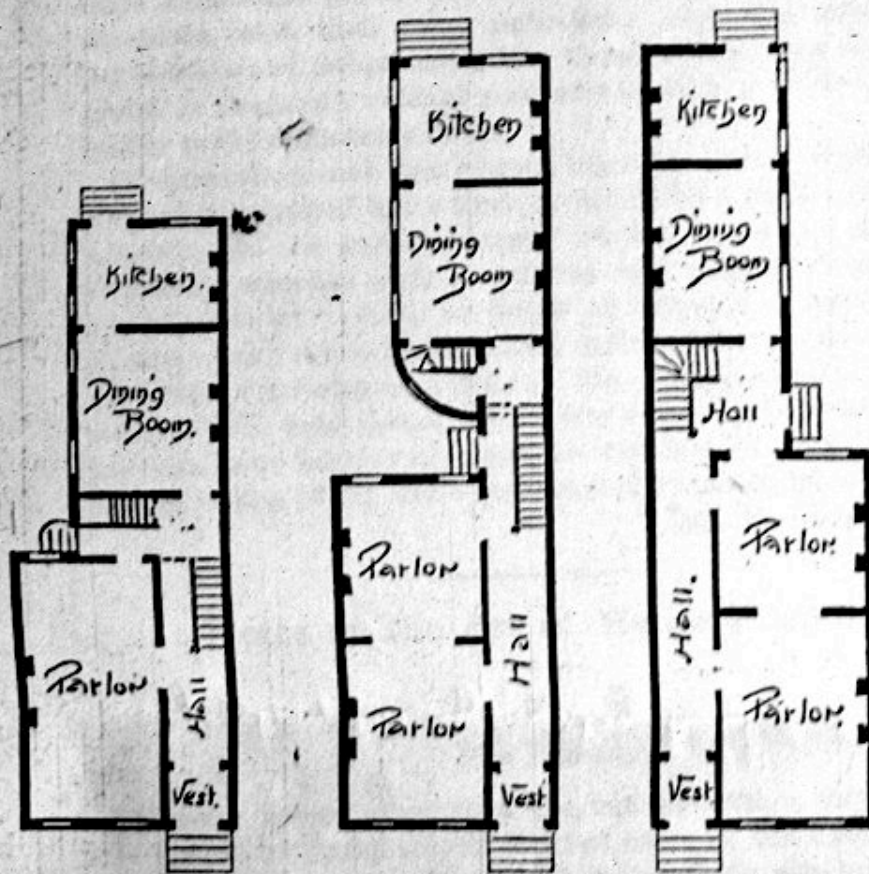


1022.
1920.
1918
1916.
1914.
1912.

WALTON



which would be greatly improved by cutting off an anterior slice to form a recessed porch. But the writer has been informed by reputable and veracious residents that it would never do to thus recess the steps—it would make a true Philadelphian feel as though he were in a foreign city.



The fronts of all these houses are of red pressed brick, made still more uniform by the omission of headers—an omission dictated by economy as well as by fashion; all the windows are rectangular and devoid of any ornament, and the window sills

still remain east of Broad street, and within the limit of the original gamut—Chestnut, Walnut, Spruce and Pine; Mark Arch and Race, and Vine—speak internally of the opulence, they are negative as to the taste, of their original owners. Plenty of room they took, these old houses, in width and depth as well as in height of story; and though many of them have not fallen from their high estate into the lower grade of boarding houses or office buildings, they are still generally considered good to tear down and thus they stay the march of improvement. Their existence and spaciousness account, in fact, for the almost non-existence in Philadelphia of those large blocks of business offices which are so characteristic a feature of most large cities. Some few of these old houses are double, that is, have rooms on both sides of the passage, but the majority are single, and in many cases the hall is sufficiently broad to permit the main staircase to start without any encroachment being made upon the rear parlor. In such cases, sufficient space is often left between the main building and the dining room in the addition to permit the main staircase to be almost entirely contained in the narrow part of the back addition.

In smaller houses the main building sometimes contains a long and comparatively narrow parlor upon the ground floor and the staircase starts near the front entrance; or there are two parlors, the rear one slightly narrower. In some of the larger mansions, on the other hand, the staircase is entirely excluded from that part of the house which occupies the entire width of the lot, is reached by a passage that runs completely through and twists itself up in a small room devoted exclusively to it. The kitchen in all these houses is rather small, and back kitchen or summer kitchen did not exist.

In all cases there is upon each upper floor a small hall besides the large ones above the parlors. If the addition is carried up to the third floor, it may contain a second large sitting room, or may be cut up into two bedrooms. It is evident that such houses as these were, in spite of their external uniformity,

W. N. Lockington on Philadelphia row houses, Building, 1886.

