



Cypre

Fitchison St

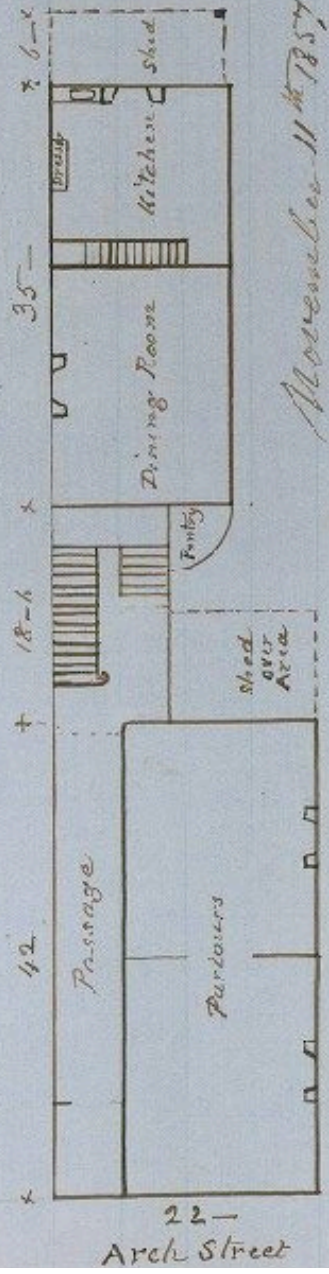
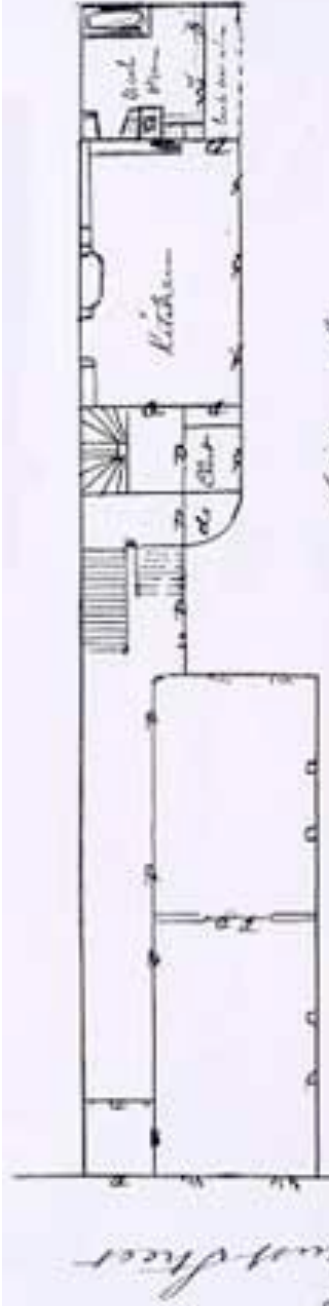


© 2007 Sanborn

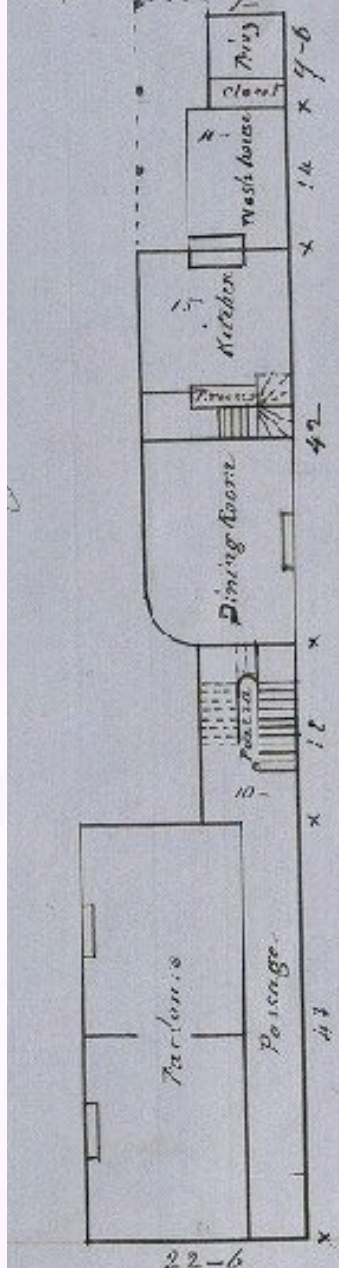
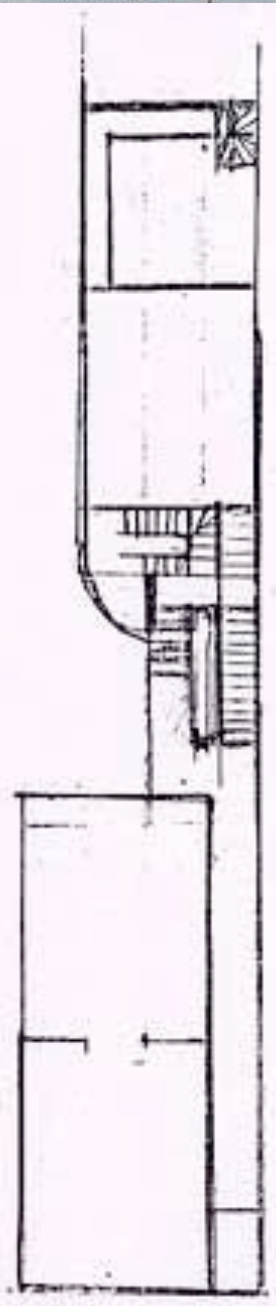
© 2007 Navteq

Google

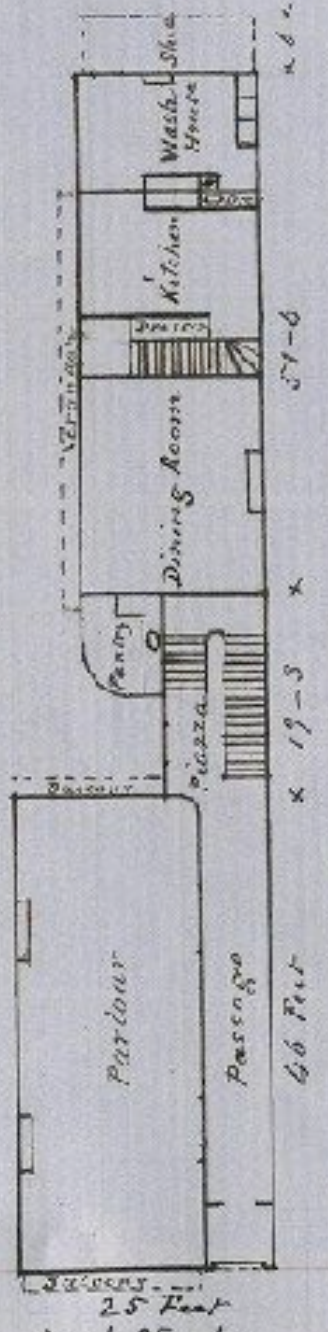
Pointer 39°56'44.23" N 75°09'25.97" W elev 30 ft Streaming 100% Eye alt 518 ft



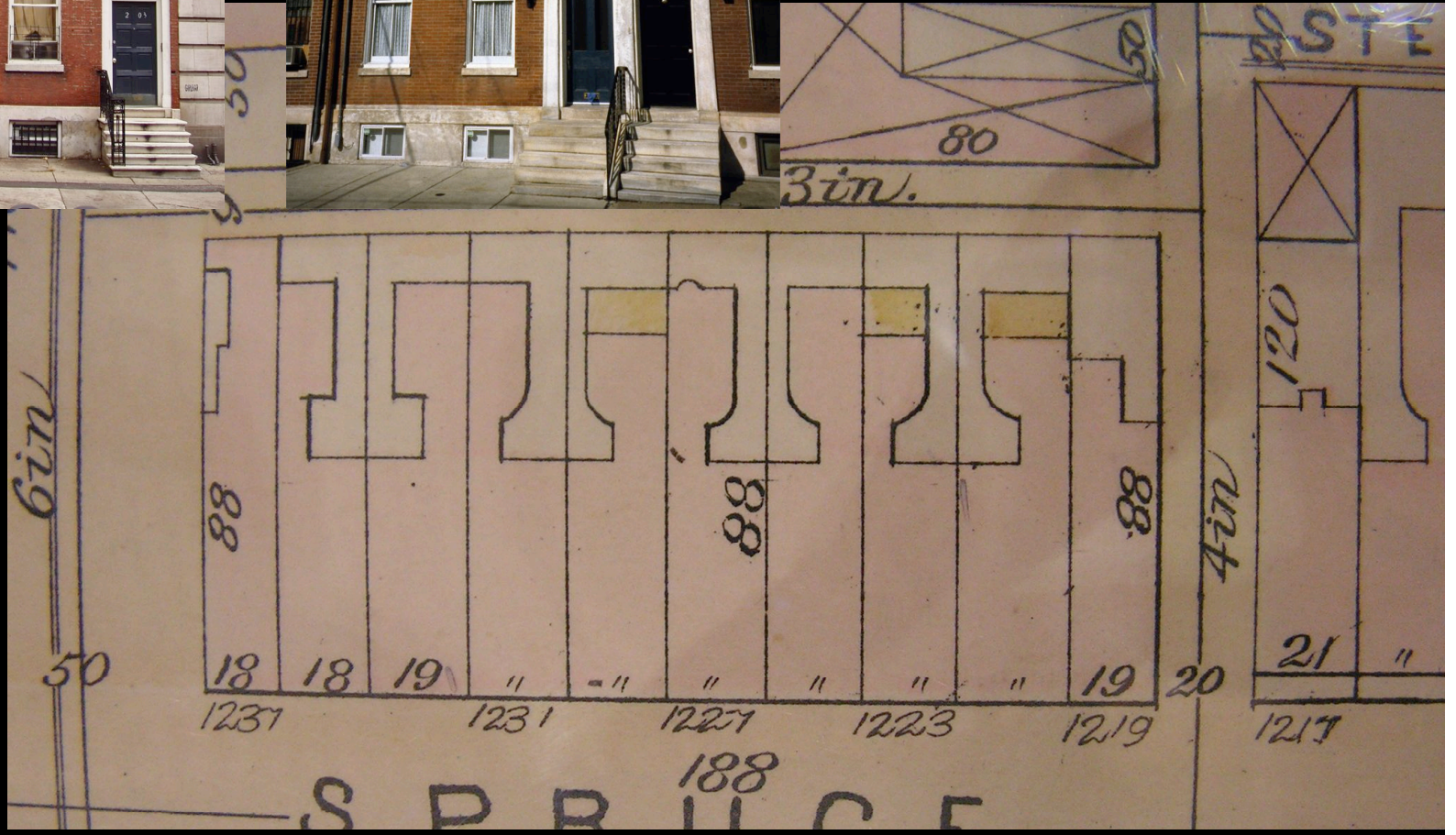
November 11th 1857

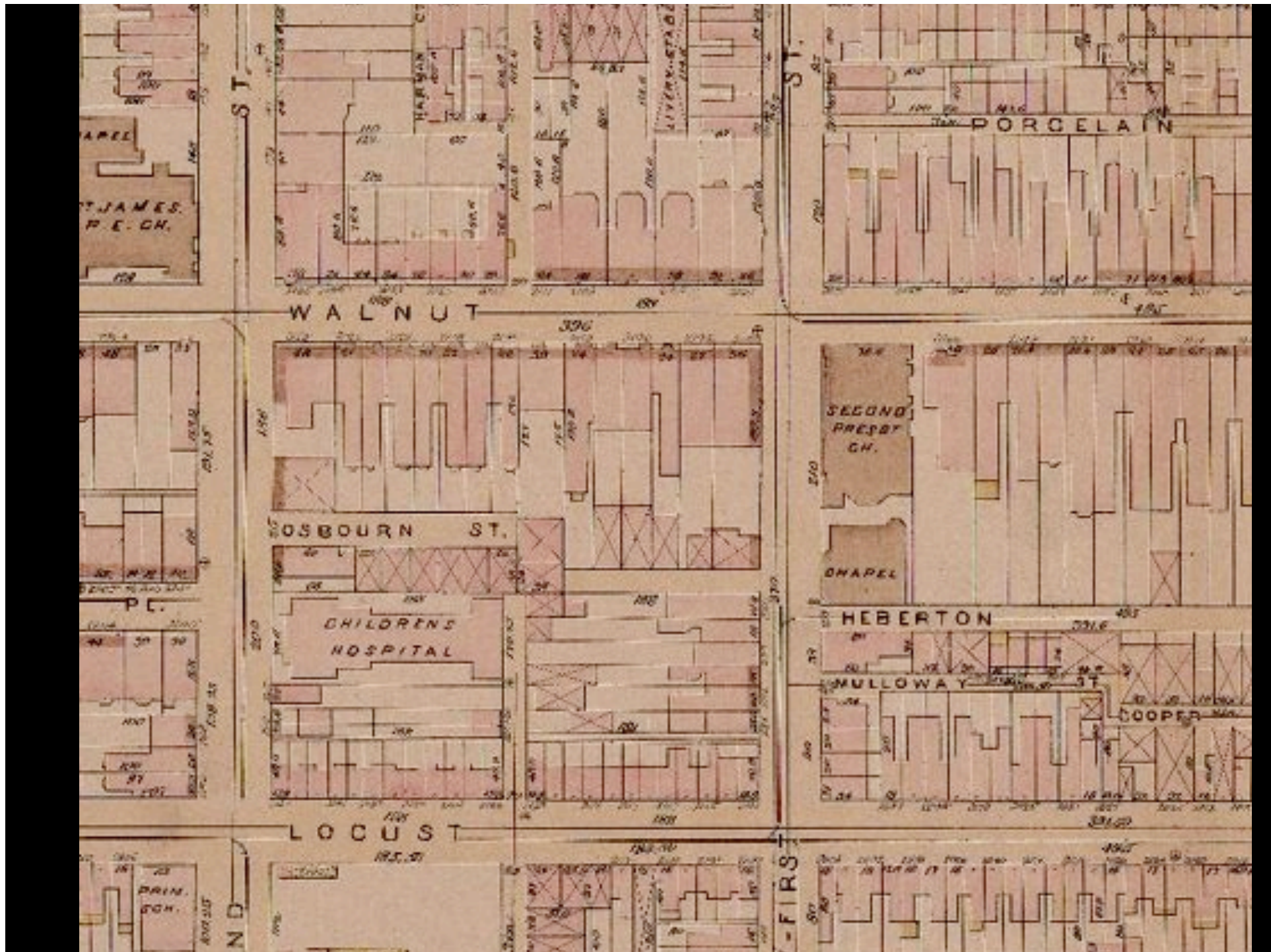


Pl: Main 900 - 22-6 - 18-6 - 35 - 6 - 14 - 7-6



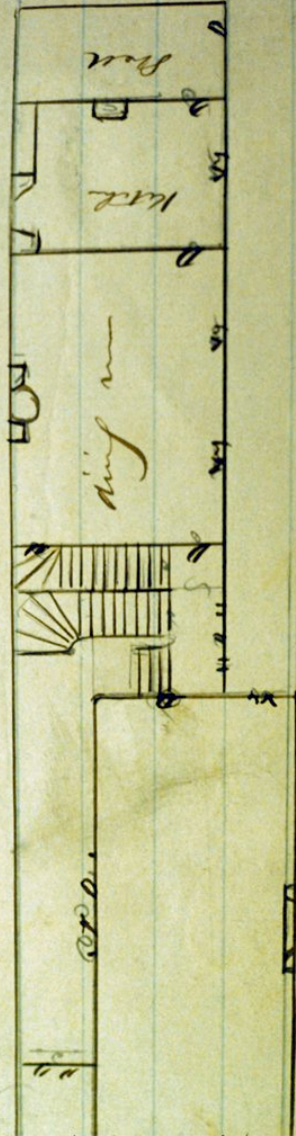
25 Feet

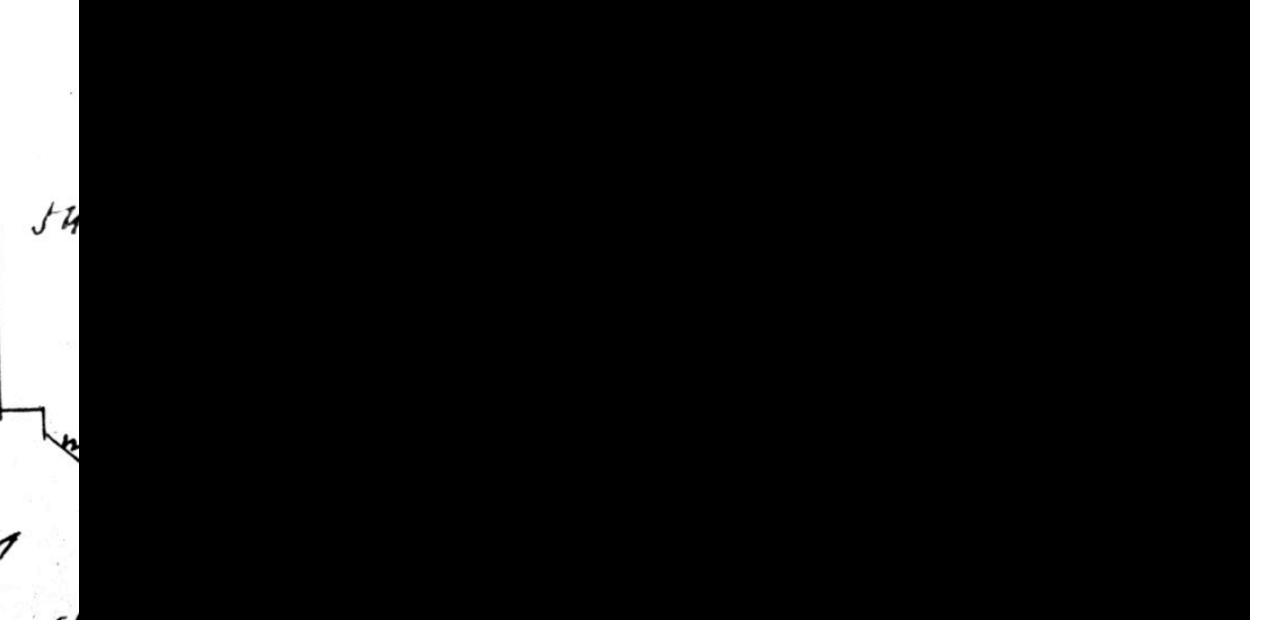
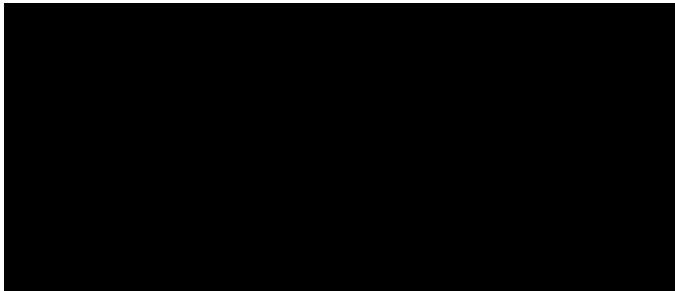


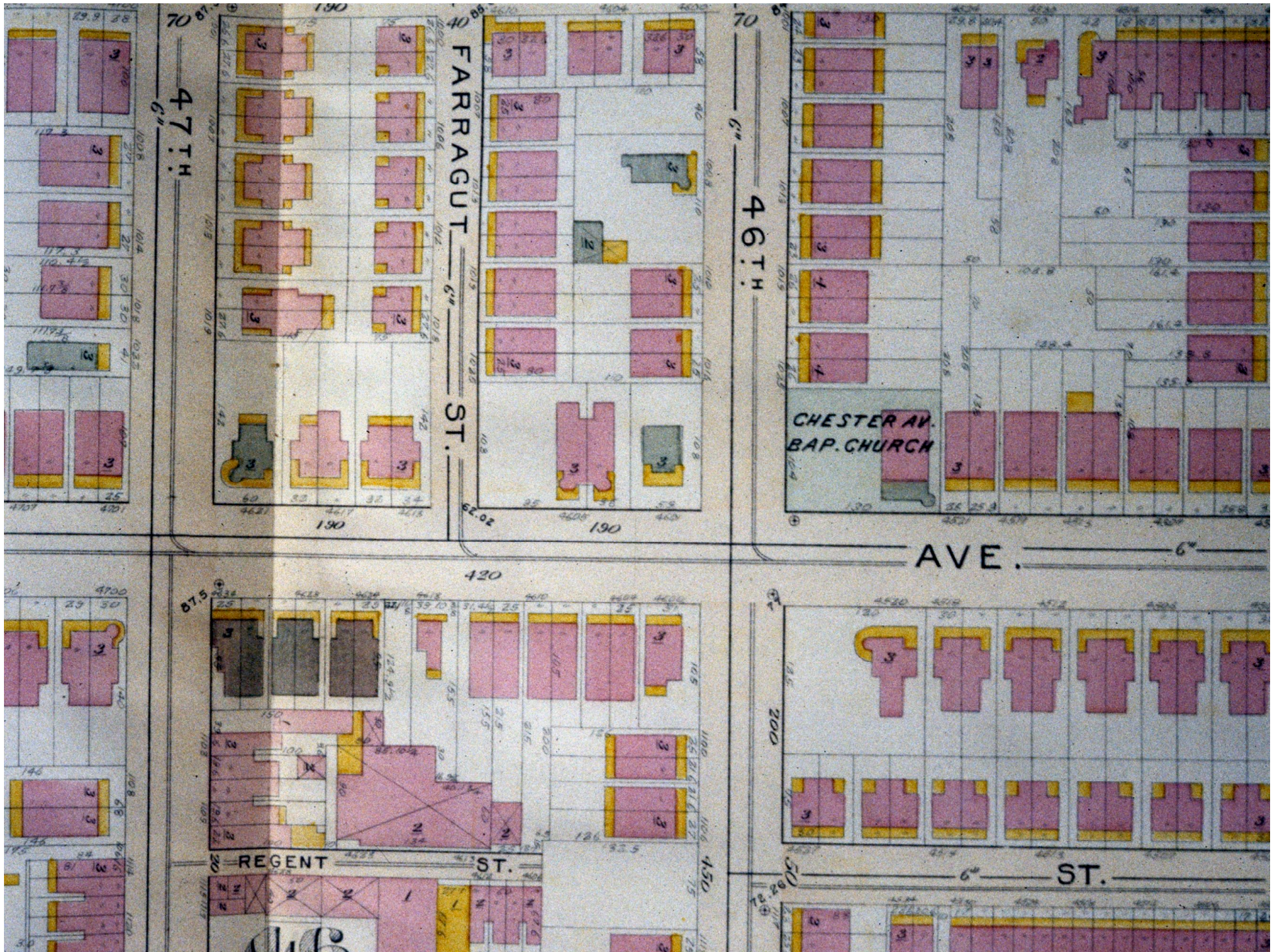


The ground has plain and of many salubrious, and salubrious, level says in a
from part of it with placed beds, on it, a shed built of kitchen included
Ludj;

Joseph W. Hickman's design







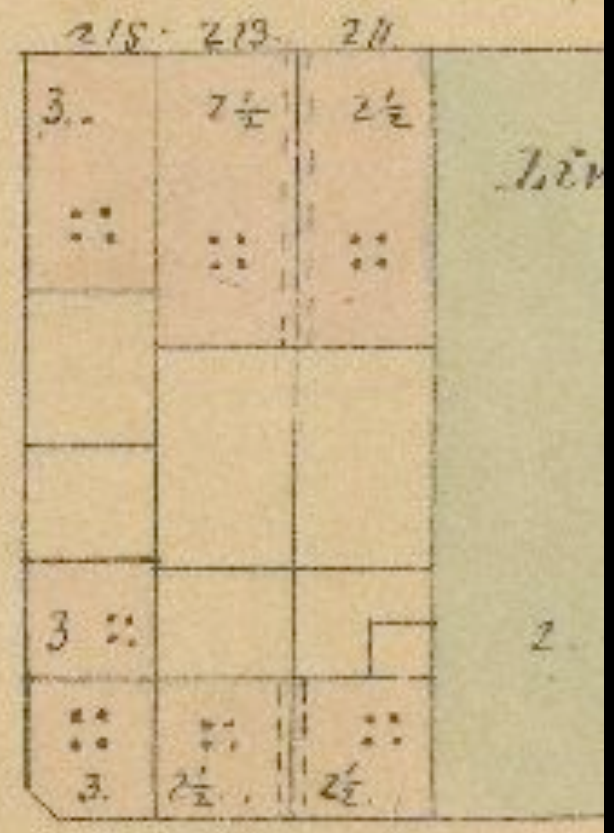
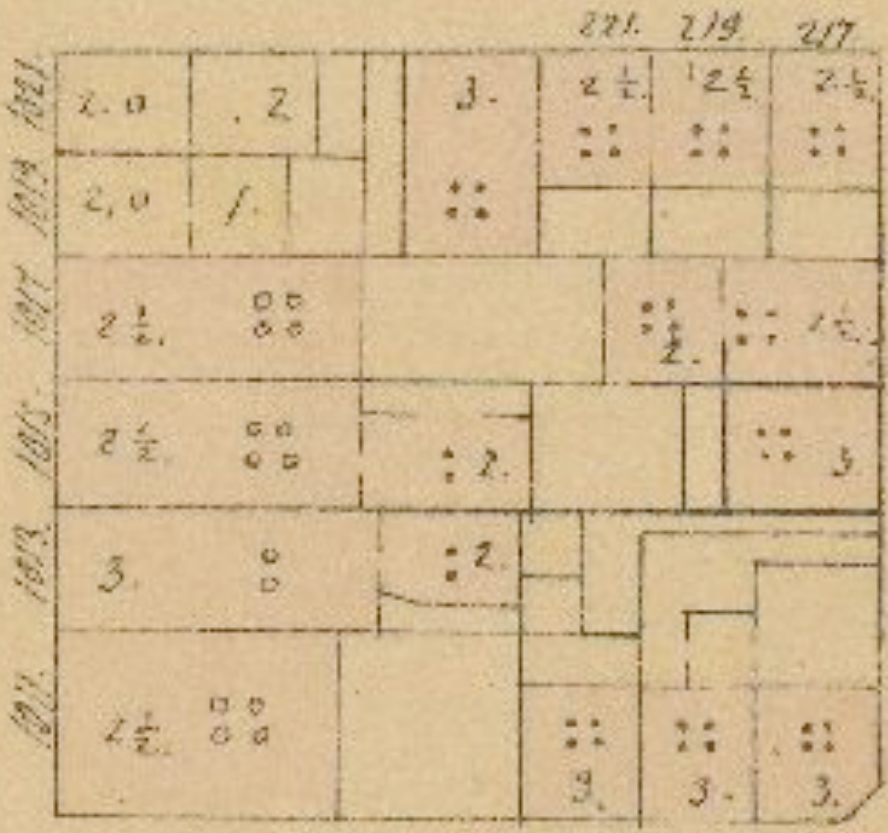


16712

4-18-1929

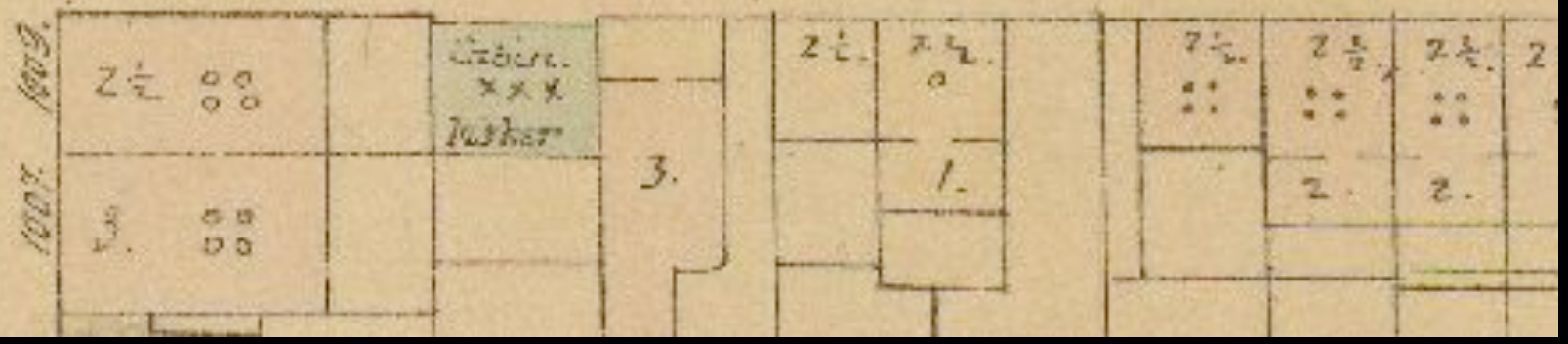


LOT 107

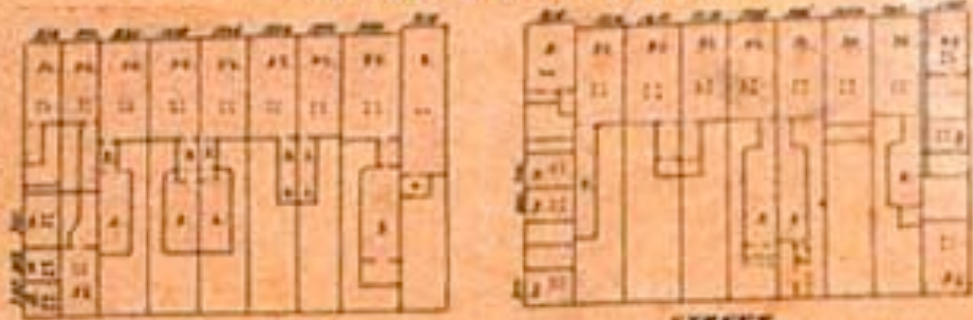


ROSE

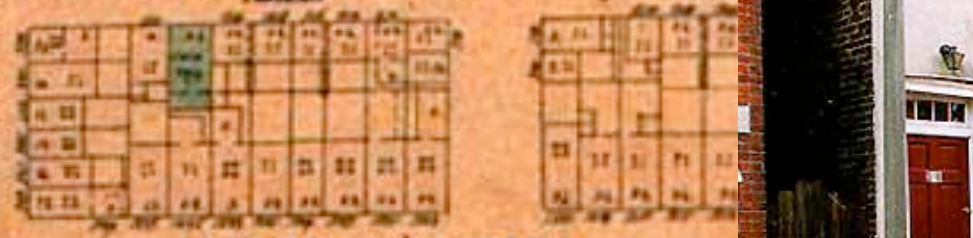
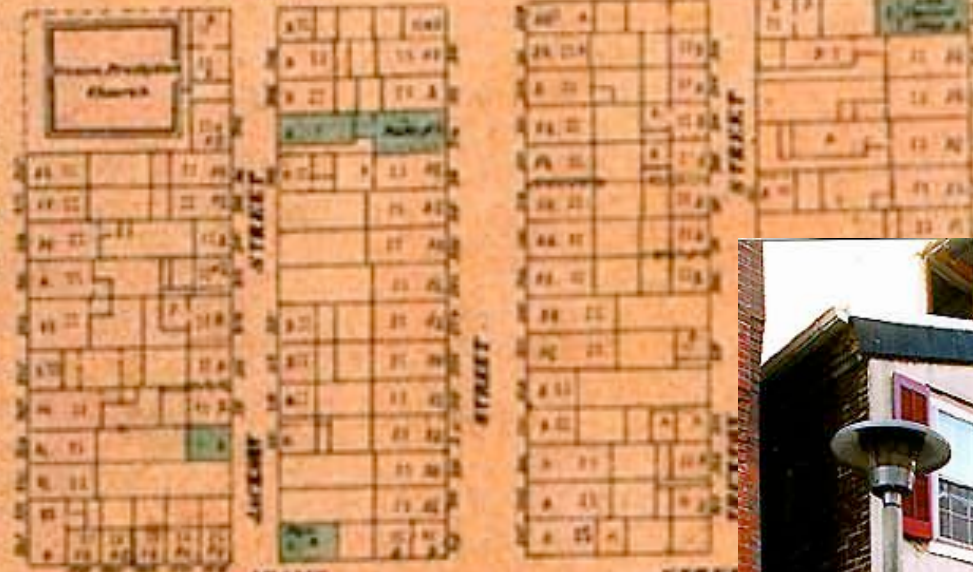
ALLEY



ST ROSE STREET



T
W
E
L
F
T
H



PINE STREET

SURVEY made June 21st 1854 and reported to the
Franklin Fire Insurance Company of Philadelphia.

For Charles Williams

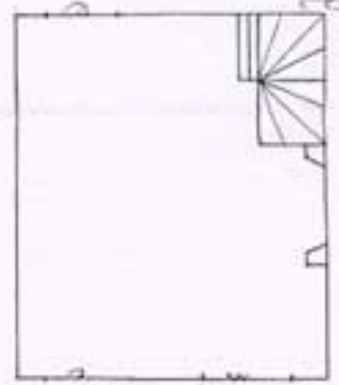
A Small two story Brick Dwelling House situate on the west side of Tenth Street, in the rear of house no 23 Perry Street, being between Spruce & Pine & Twelfth & Thirteenth Streets in the City of Philadelphia.

Dimensions 13 feet 6 inches by 13 feet 6 inches deep, gable end to the front. The 1st story has a plain sashless door frame 8 feet light by 10 inches front, a plain door frame back, the front door frame has a square transom 4 feet light of glass, side door, with oval mouldings and washbasin, mantel shelf, square framed panel door, yellow pine floor 4 1/2 inch 3 feet high in the clear, 2 flights of plain common winding stair 2 feet 3 inches, upper flight skated.

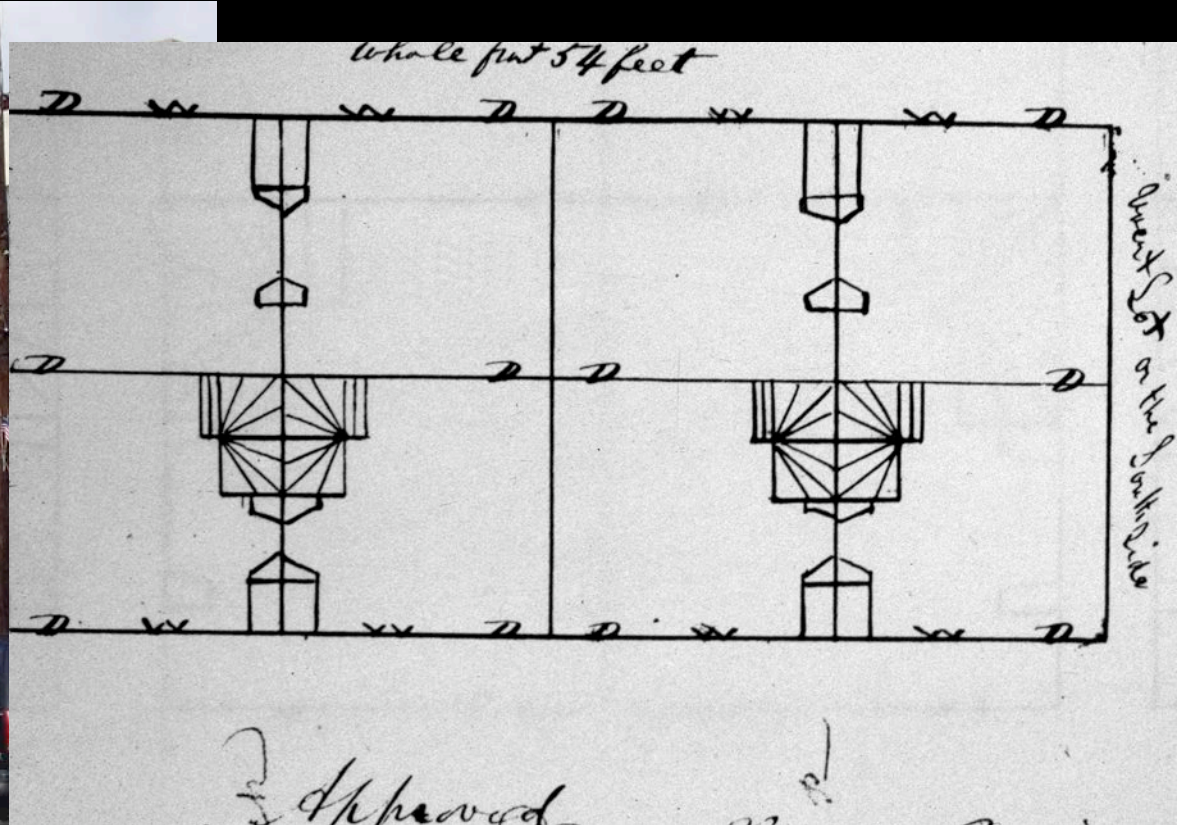
The 2nd story has 2-12 light by 10 window pane, white pine floor common oval mouldings & washbasin, mantel shelf, side door & door as 1st story & 7 feet 6 inches high in the clear, a steps ladder to the roof which is single pitch to the south 5 feet pitch, 2 x 4 shingles & 1/2 inch sheathing for drying clothes, plain brick canted sashless window frames, each single hung & plain panel shutters, have lathed & plastered.



J. H. Hickwin's Surveyor
Charles Williams



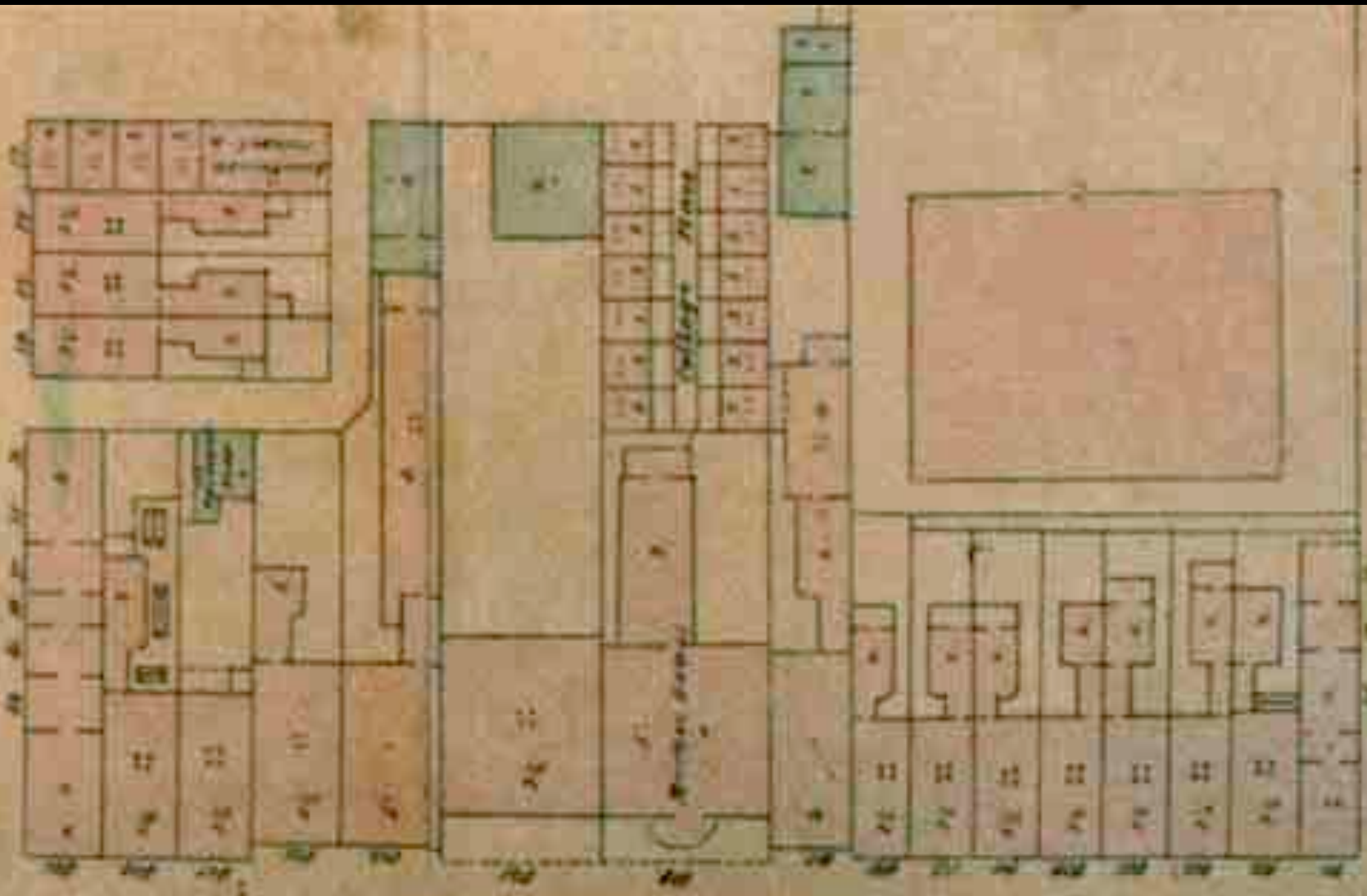
Front on Tenth Street





TENTH STREET

NINTH STREET

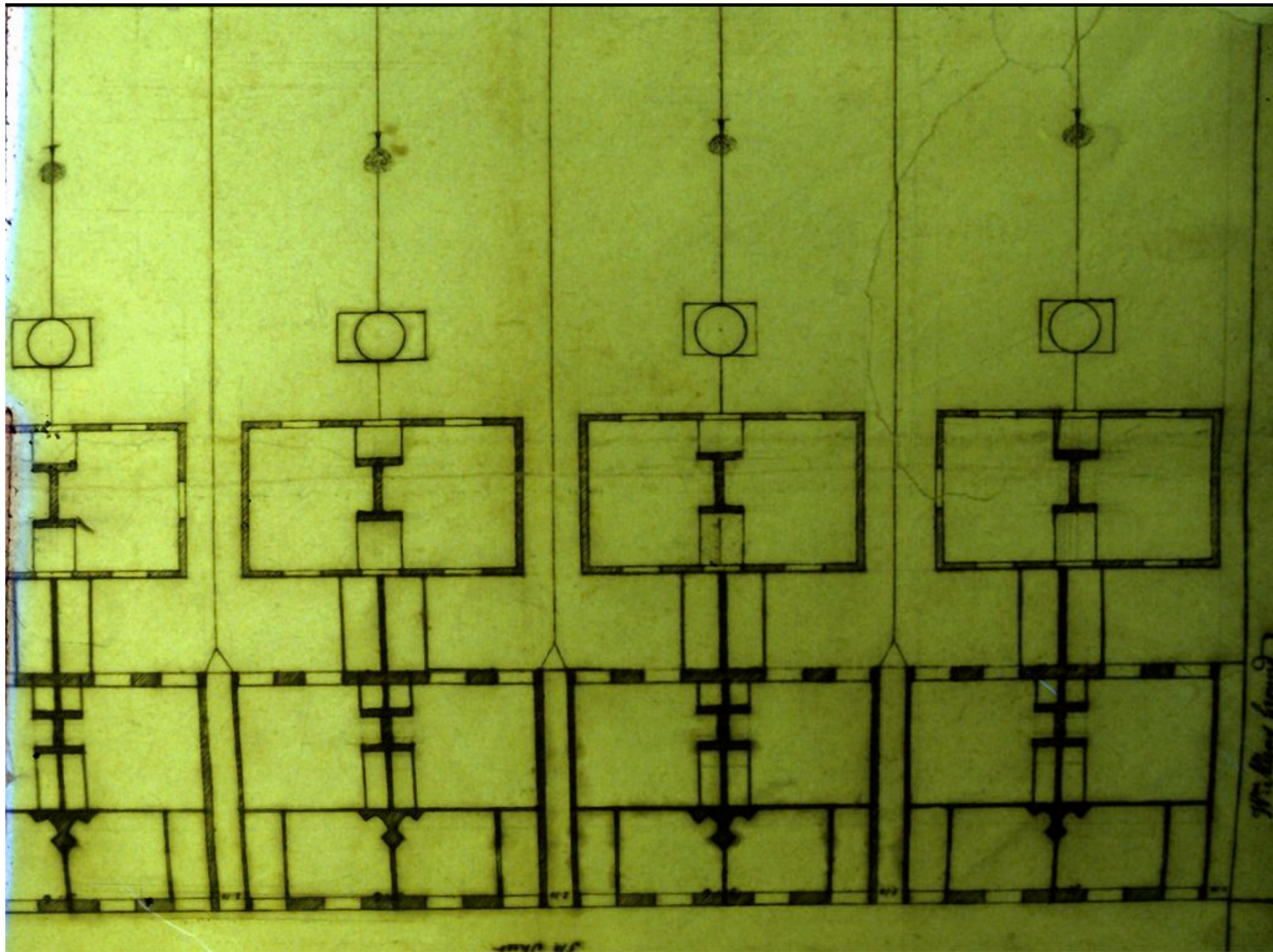


CHESTNUT STREET



Drawn, Engraved & Published by W. Birch & Son,

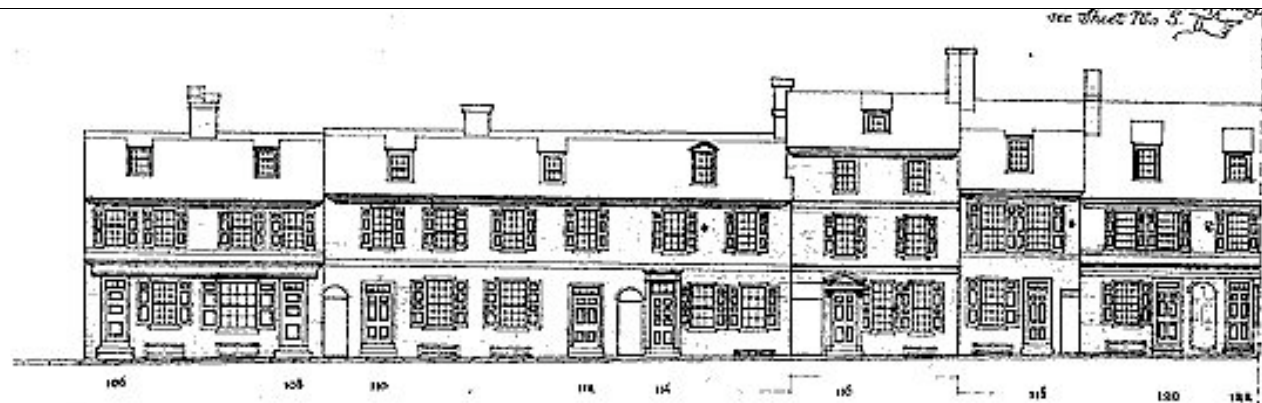
Sold by R. Campbell & Co. N. 50 Chestnut Street Philad. 1789.





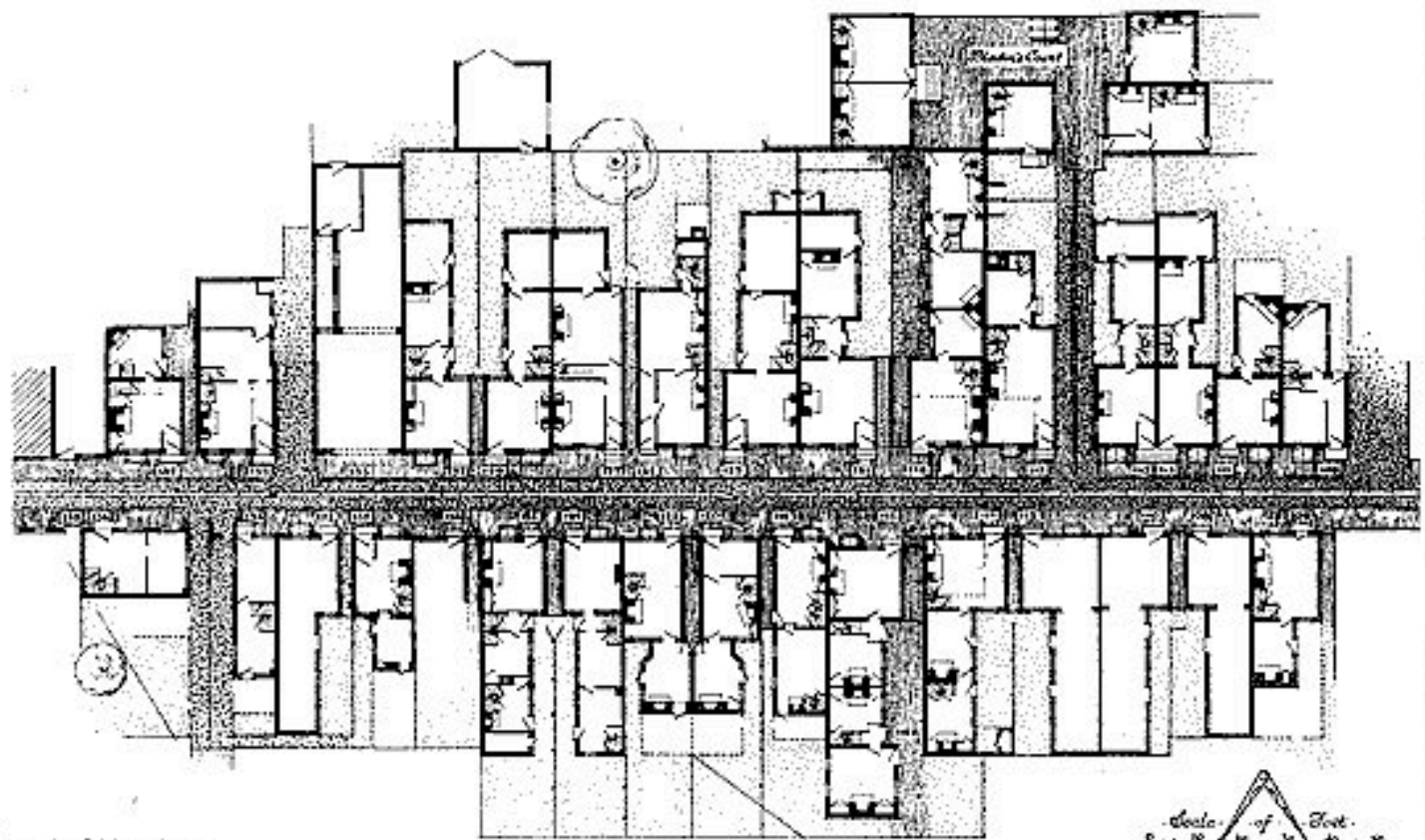


© 2005 Steve Zettler



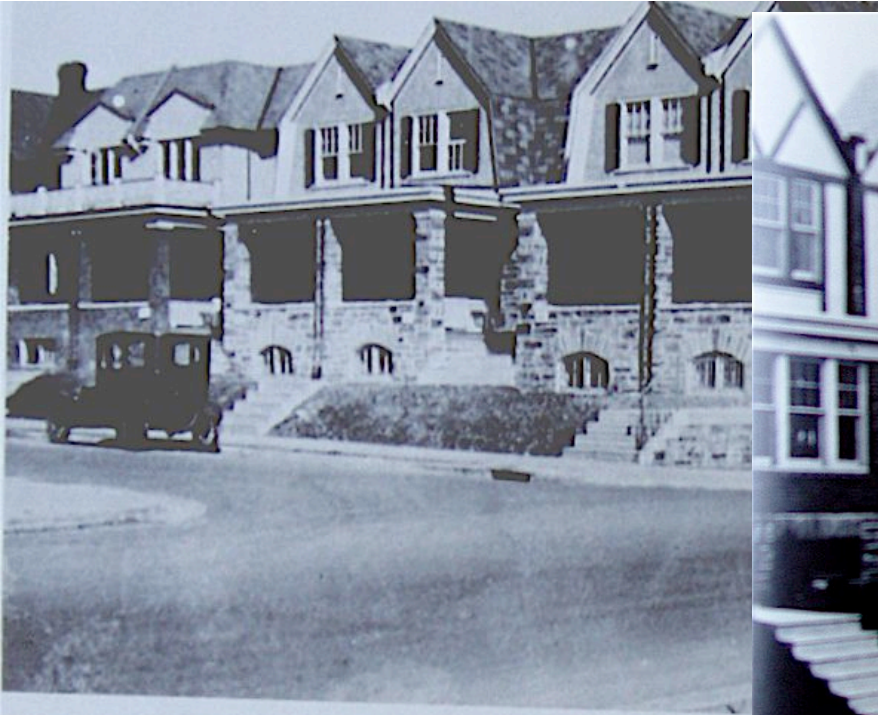
Measured by
 D.B. MacLeod & A.P. Bell
 Drawn by D.B. MacLeod
 1891

East Portion of South Side of Alley



Drawn by G. G. Gault - 1891.











FOR SALE
Apply at
P. J. TWHELAN
PHONE 2-450

THESE HOUSES FOR SALE
Apply at OFFICE
P. J. TWHELAN
PHONE 2-450
SEE US ABOUT TERMS

