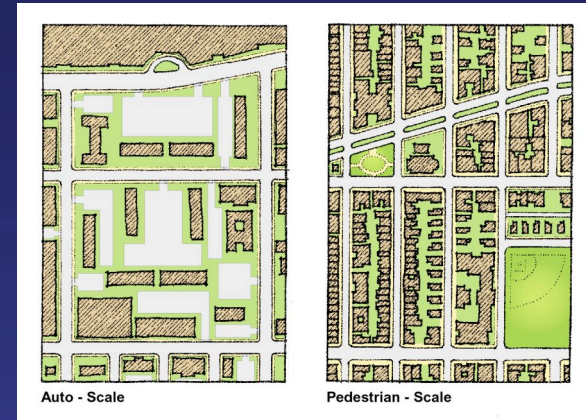


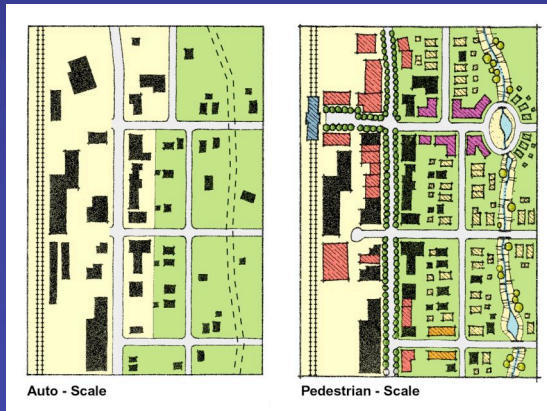
# Principles



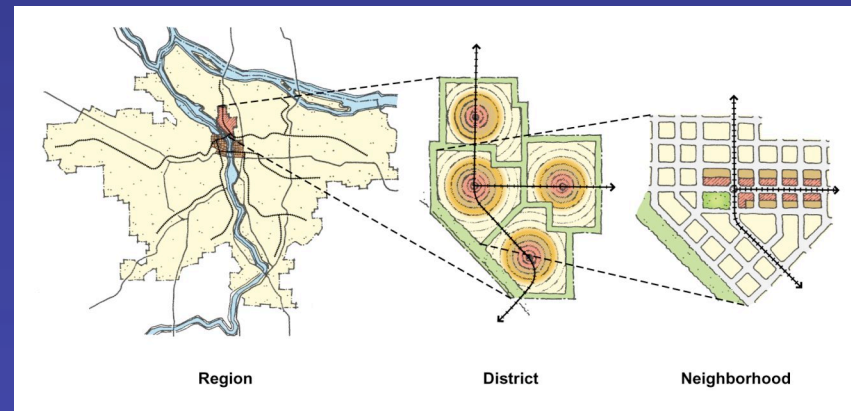
Diversity & Balance



Human & Pedestrian Scale



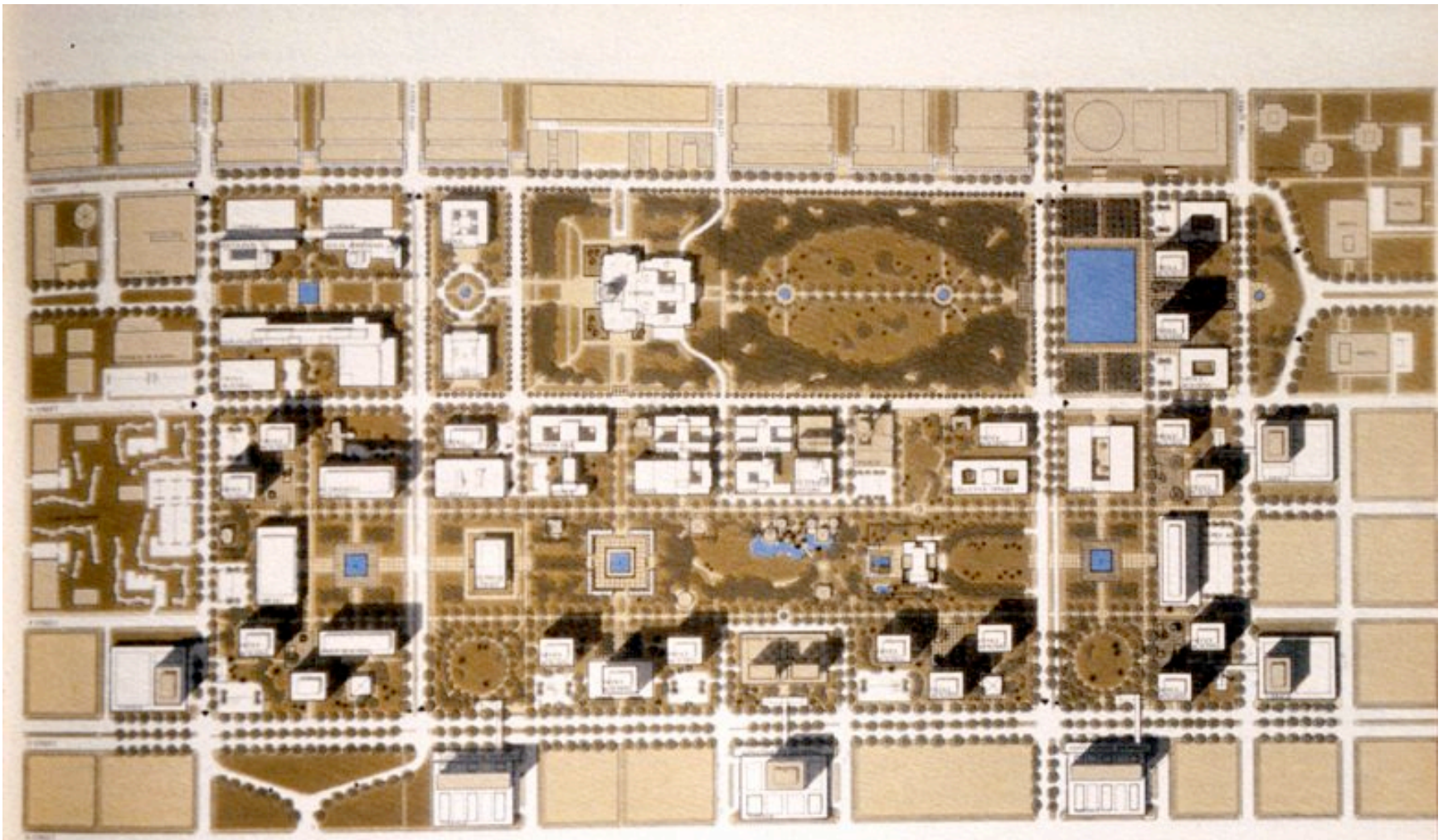
Conservation & Restoration



Connections & Interdependence







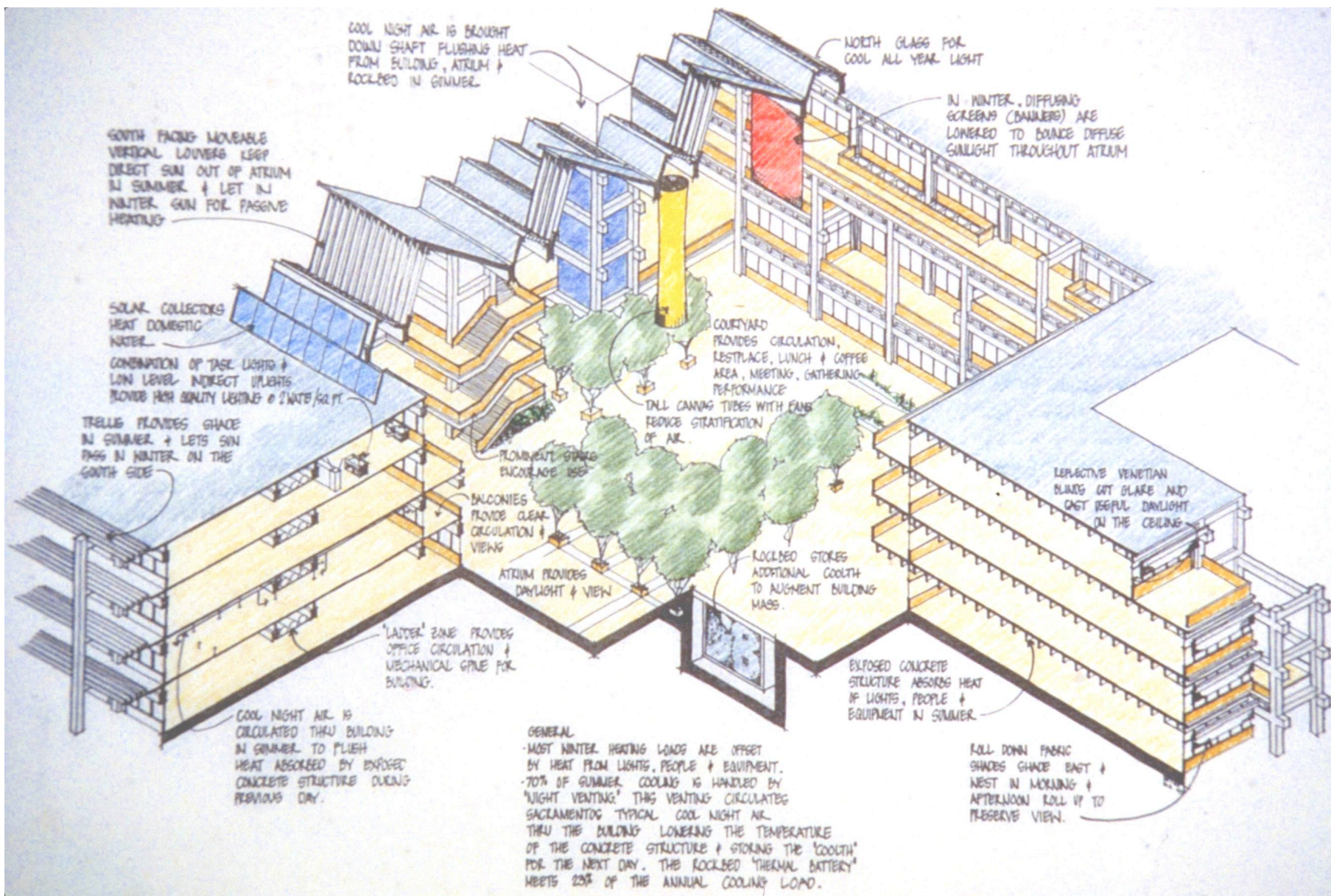
**THE CALIFORNIA STATE CAPITOL PLAN**  
*YEAR 2000*





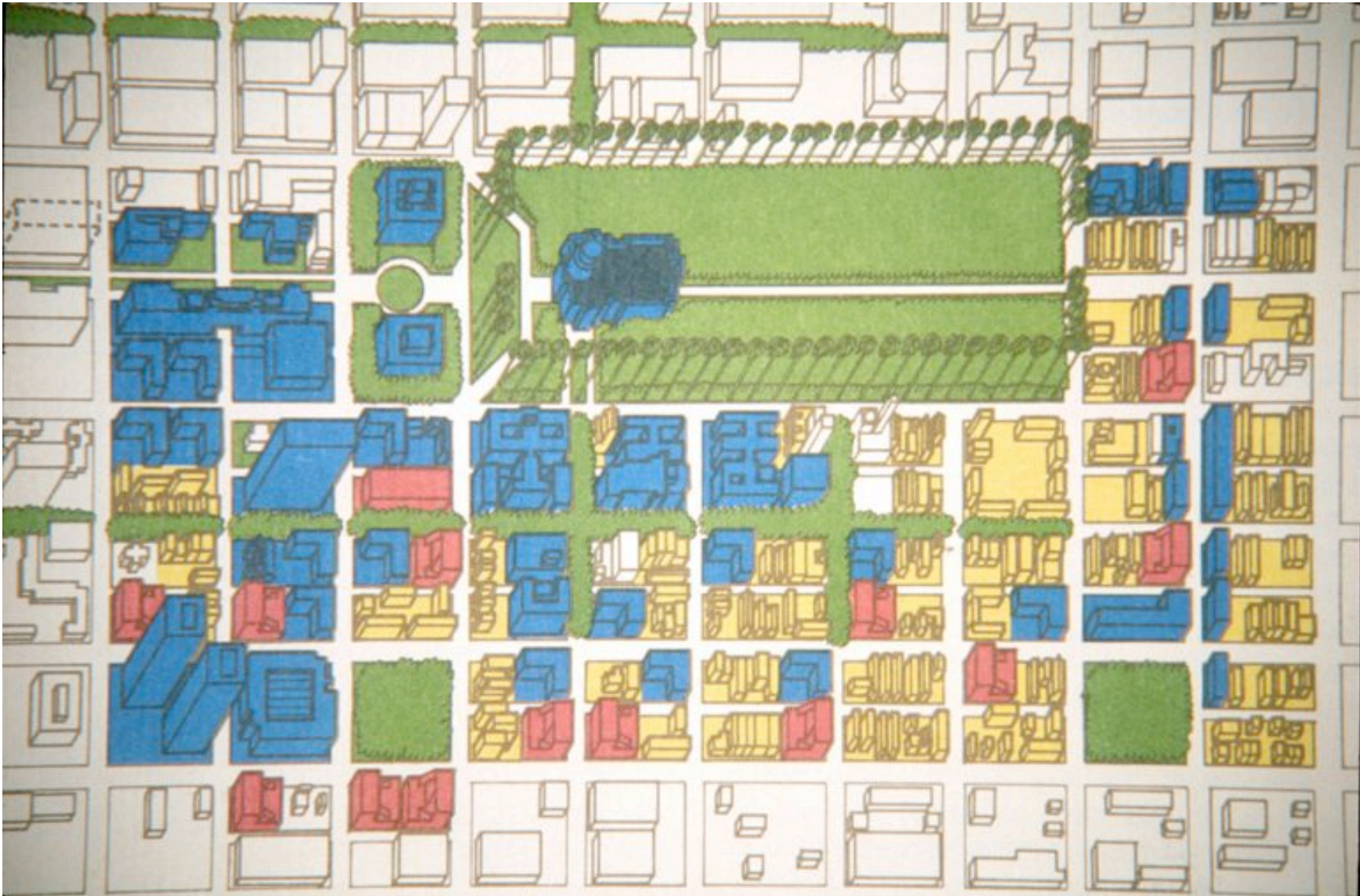












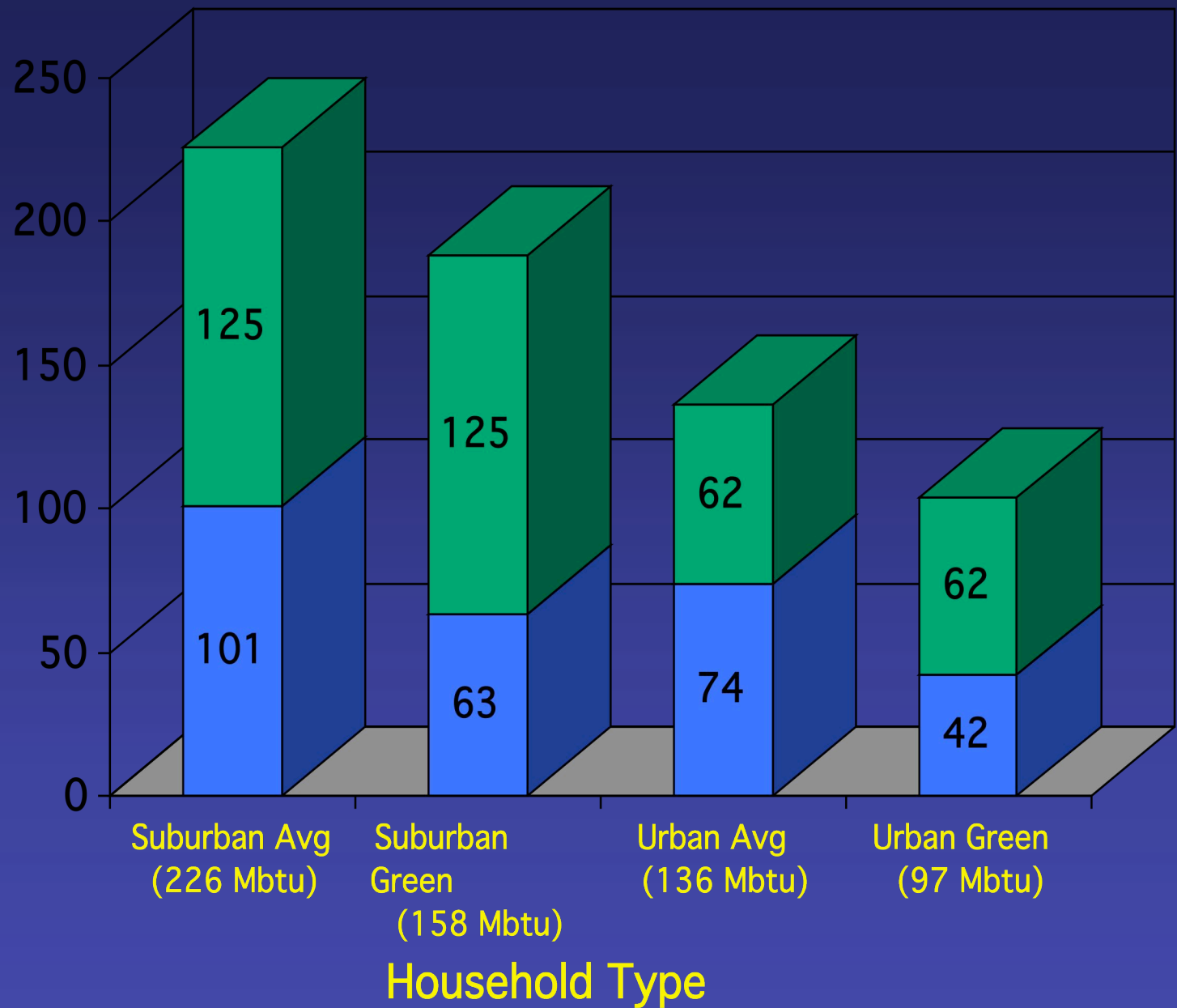




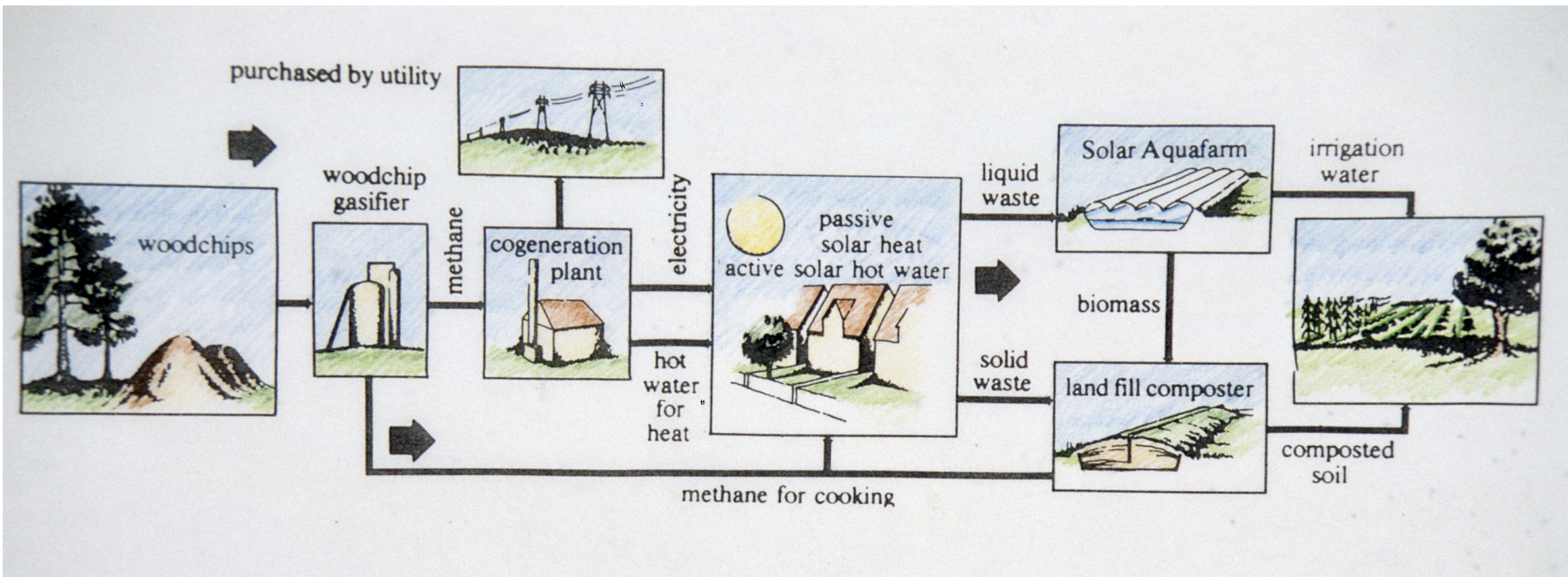




Million BTU  
per Year  
per  
Household







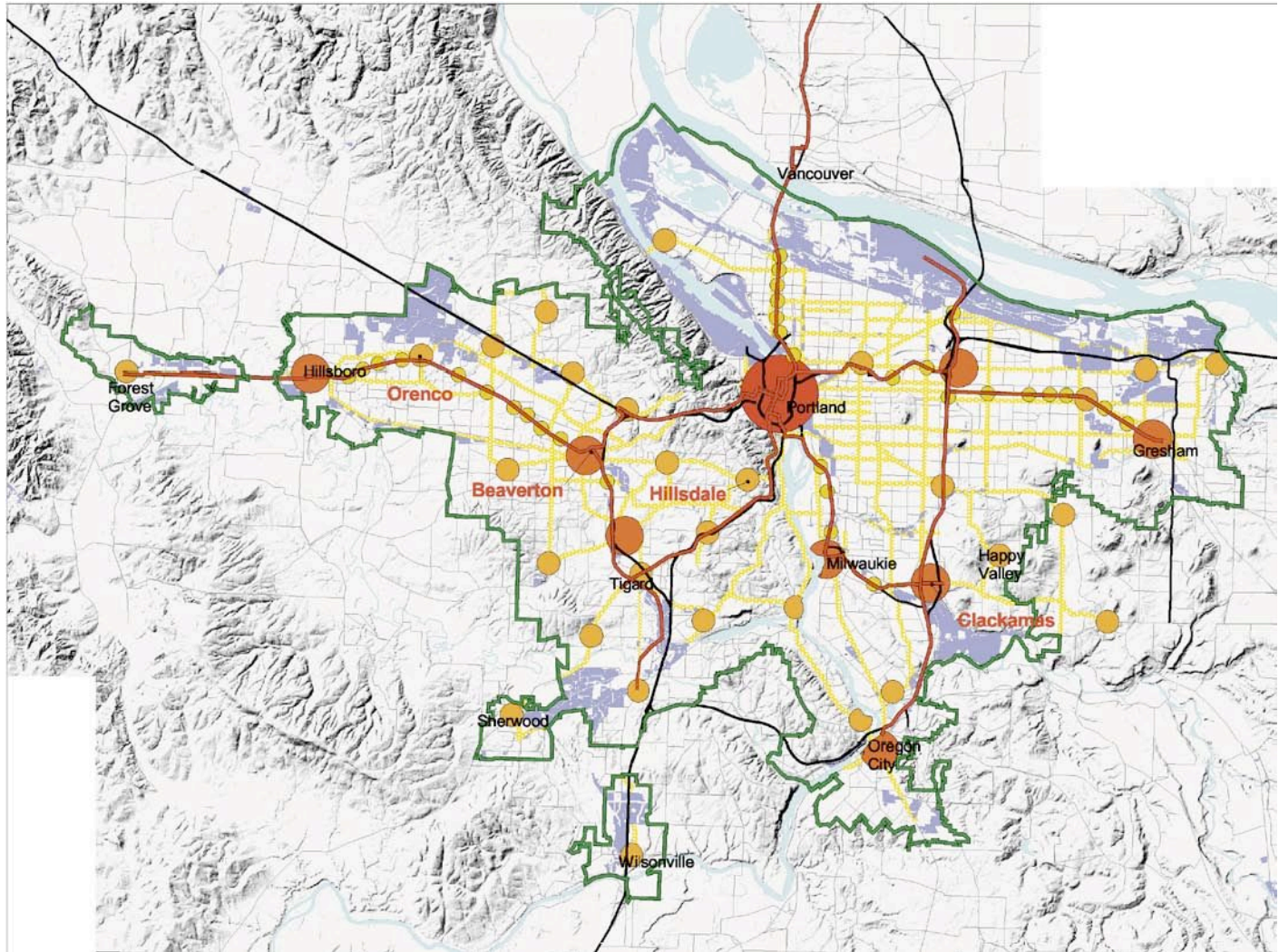
**Metro 2040**

**Oregon**











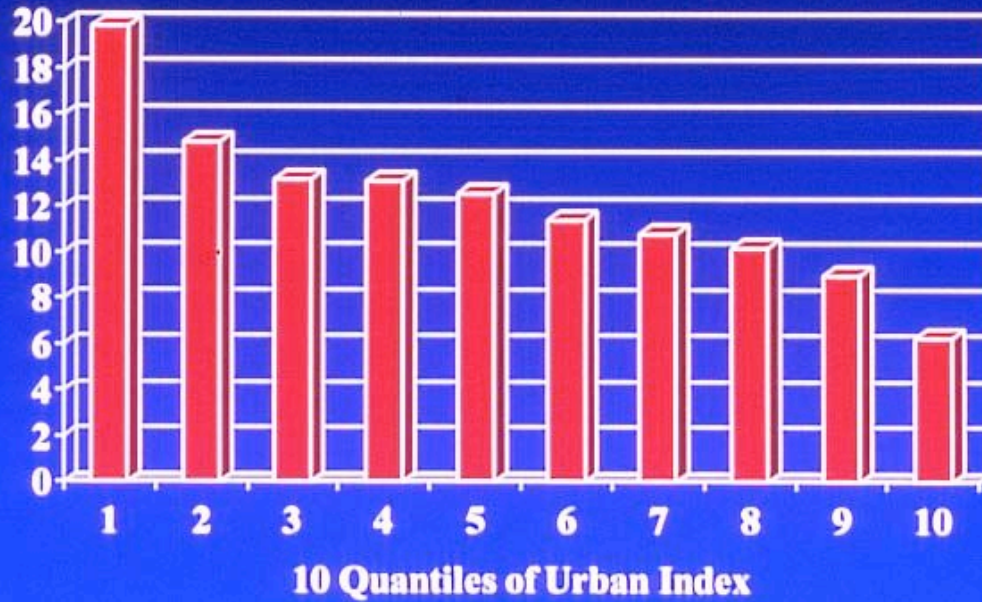


# Total Trips per Adult per Day





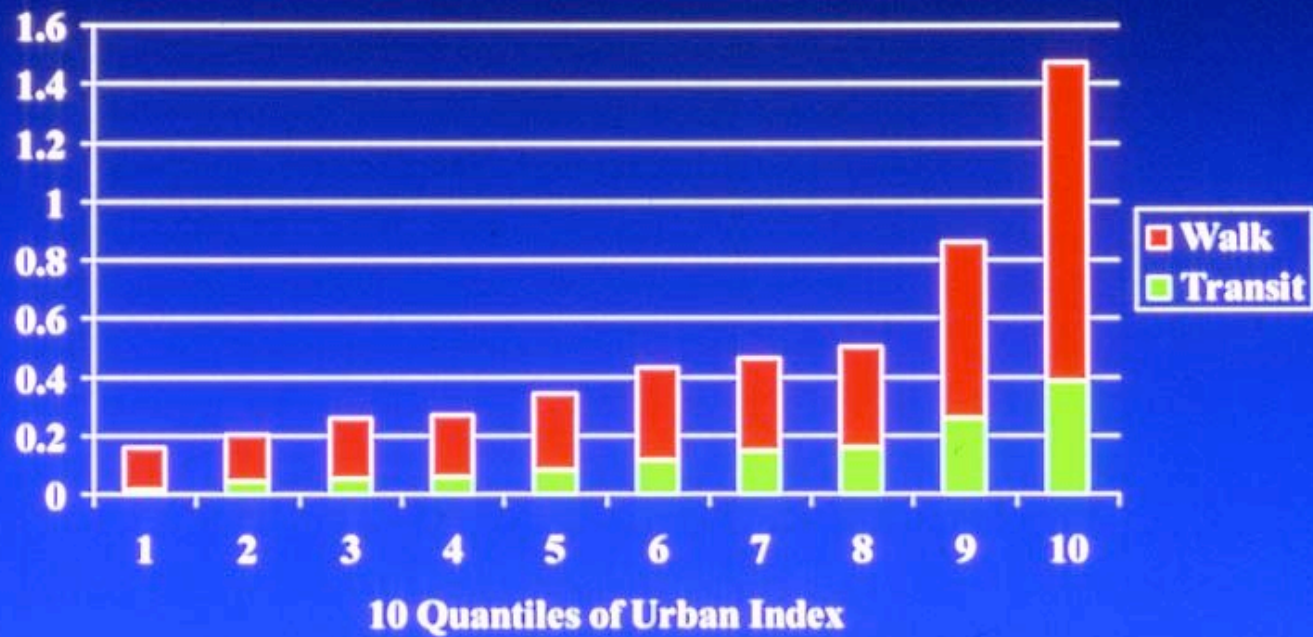
# Vehicle Miles of Travel (VMT) per Person per Day







# Walking and Transit Trips



# Affordability: Portland vs. Similar Western Regions











# Portland Pearl District



# Portland Pearl District







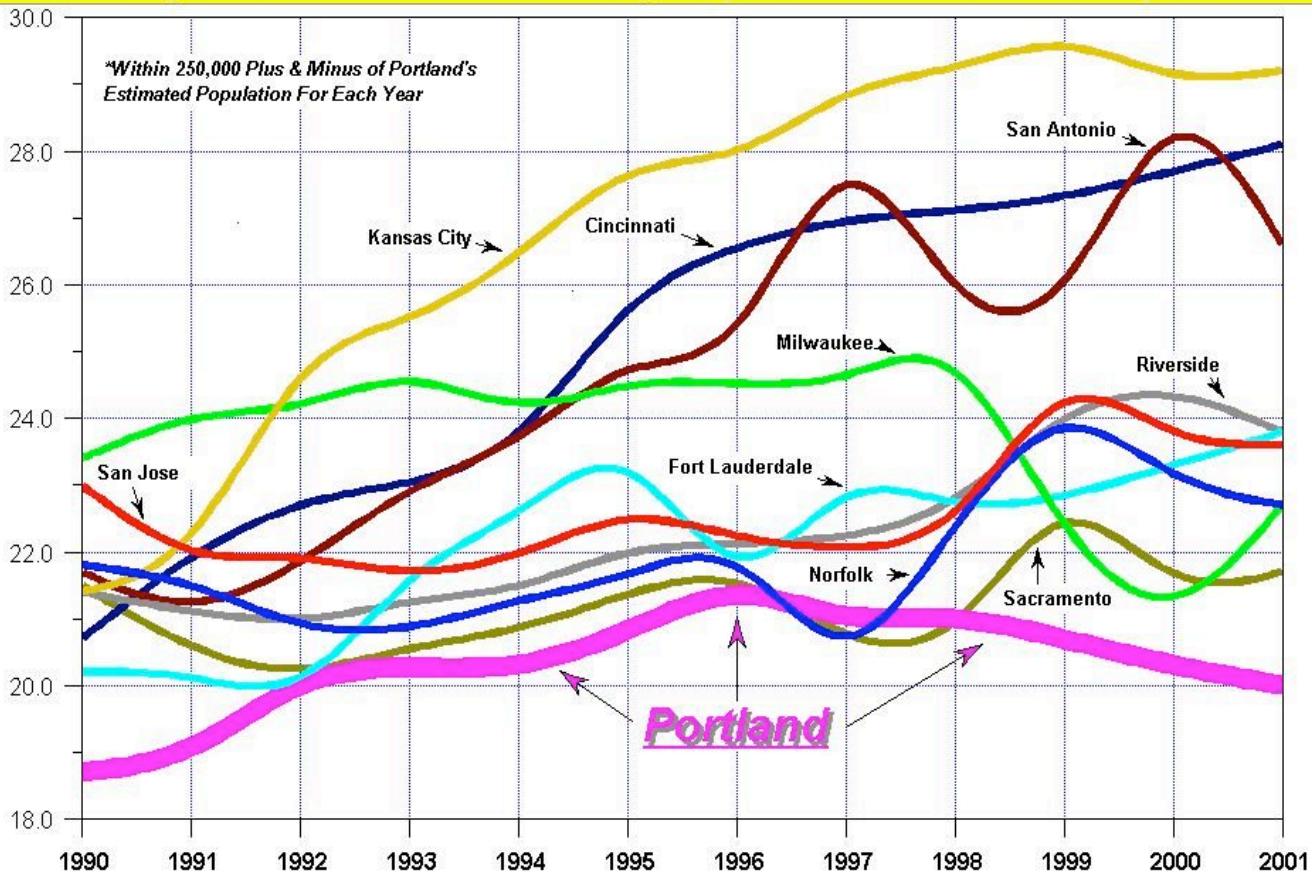








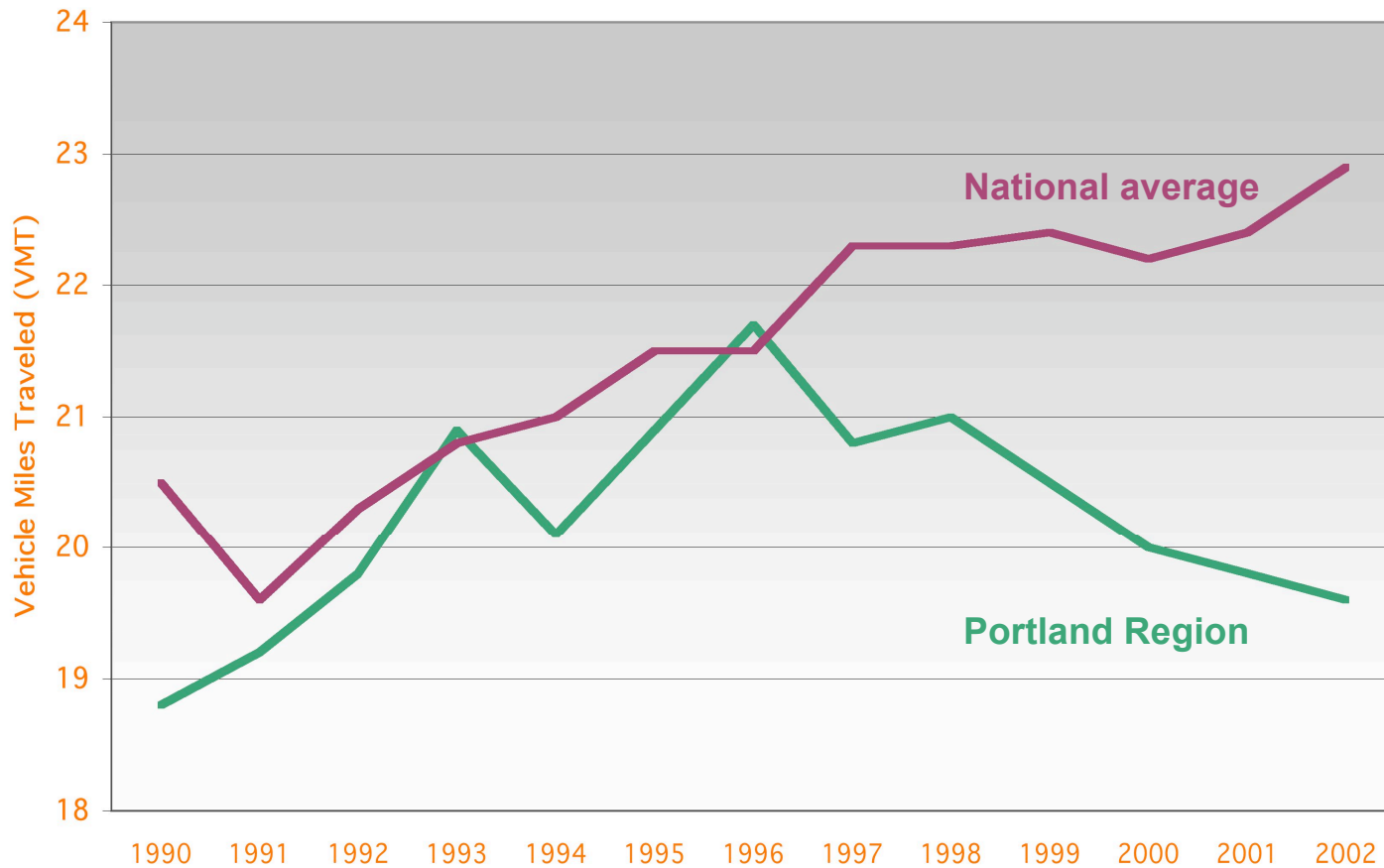
**Portland Daily Vehicle Miles Traveled Per Person, Compared With Cities Of Similar\* Population Size**



Source: "Highway Statistics", published by the FHWA, 1990-2002, 'Urbanized Areas, Selected Characteristics', Table HM-72. Portland data for 1999 and 2000 was in error due to a report software problem. The corrected figures appear above, as per direct correspondence with Oregon's DOT, Highway Performance Monitoring System office. Note: For data consistency over time, some figures were included that were above or below the 250,000 population range criteria.



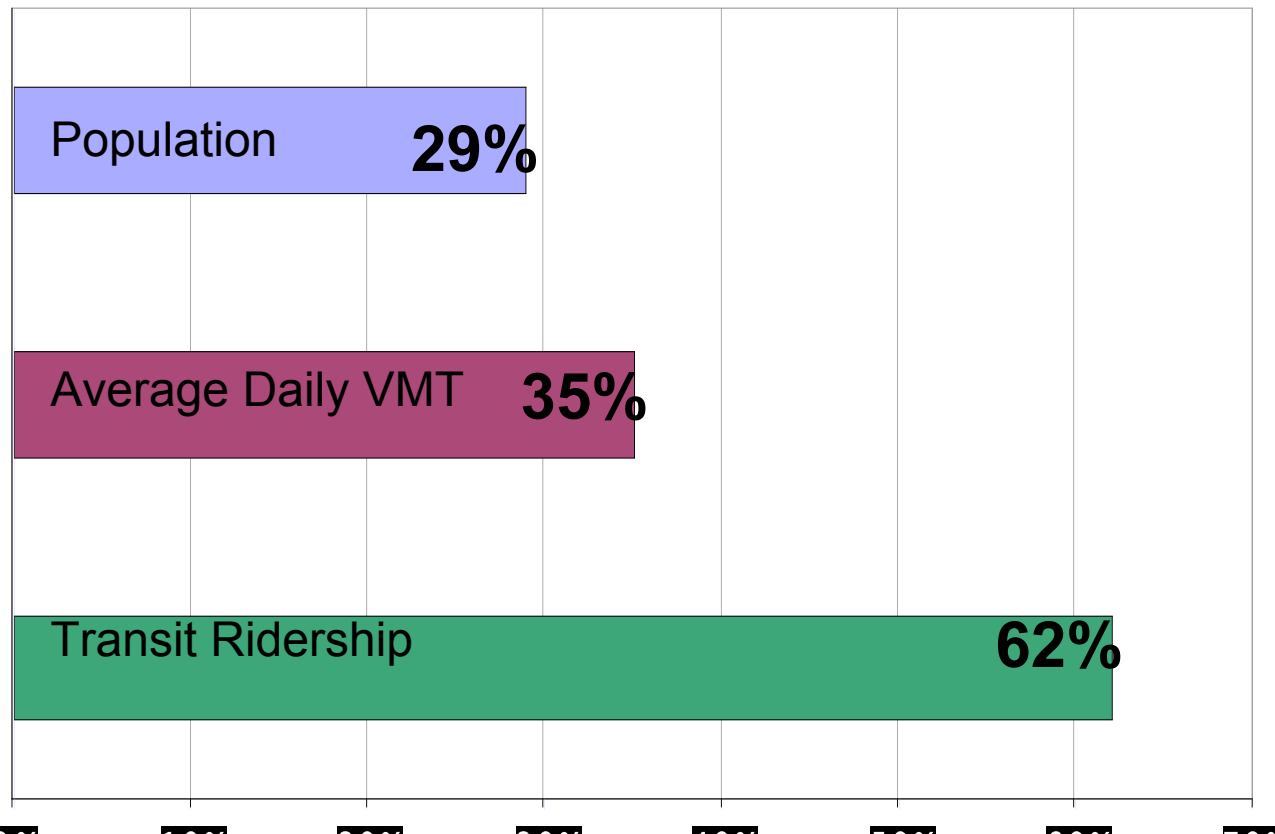
Average Daily VMT  
Portland Region vs. National Average, 1990-2002



Daily VMT in the Portland region declined 11% from 1996 to 2002, compared to a 6% increase nationally

Source: State Highway Performance Monitoring System (HPMS); Federal Highway Administration,

# Portland Metro – Growth in Transit Ridership, 1990–2002

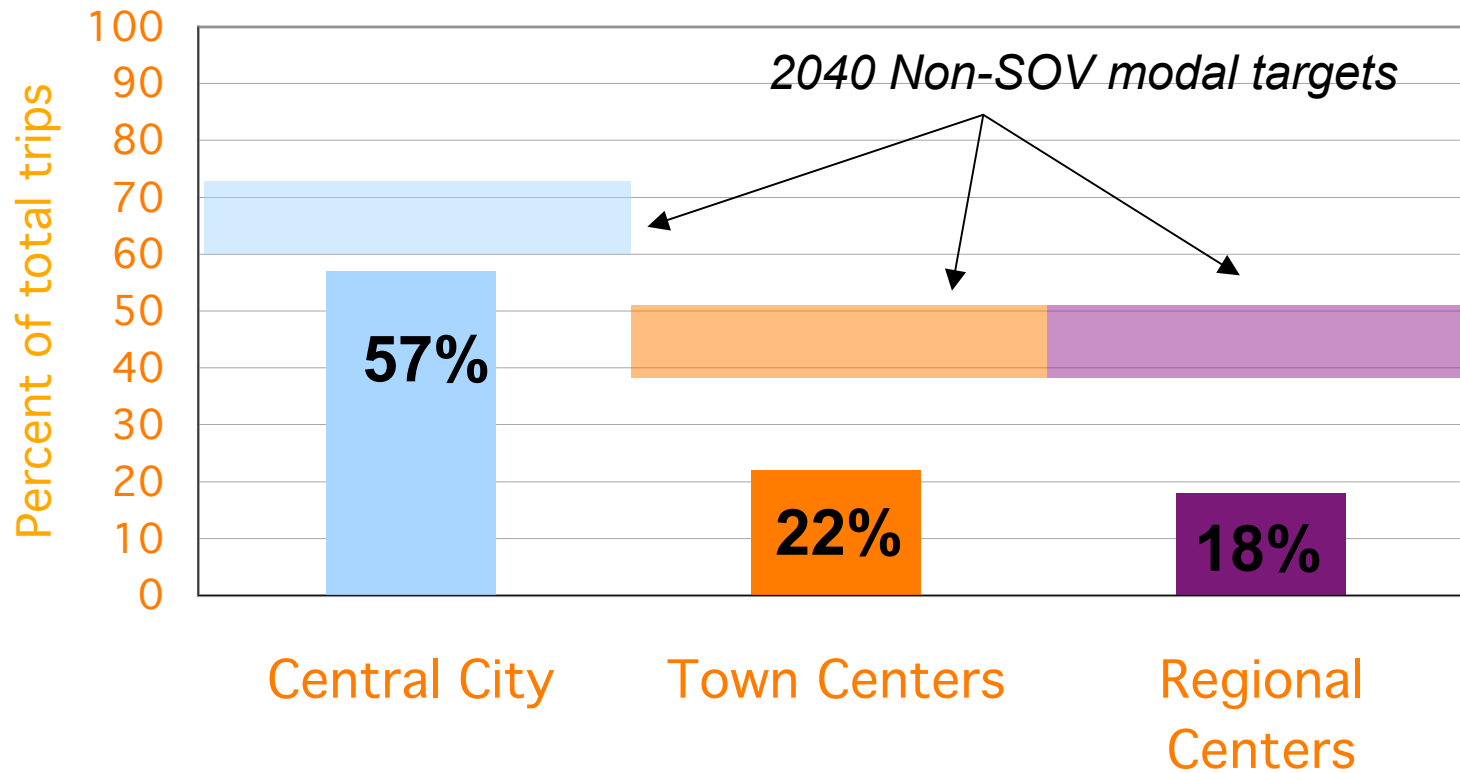


*Source: Metro Data Resource Center; TriMet; State Highway Performance Monitoring System (HPMS)*



# PORTLAND METRO – 2002

## Percent of transit & carpool trips to work

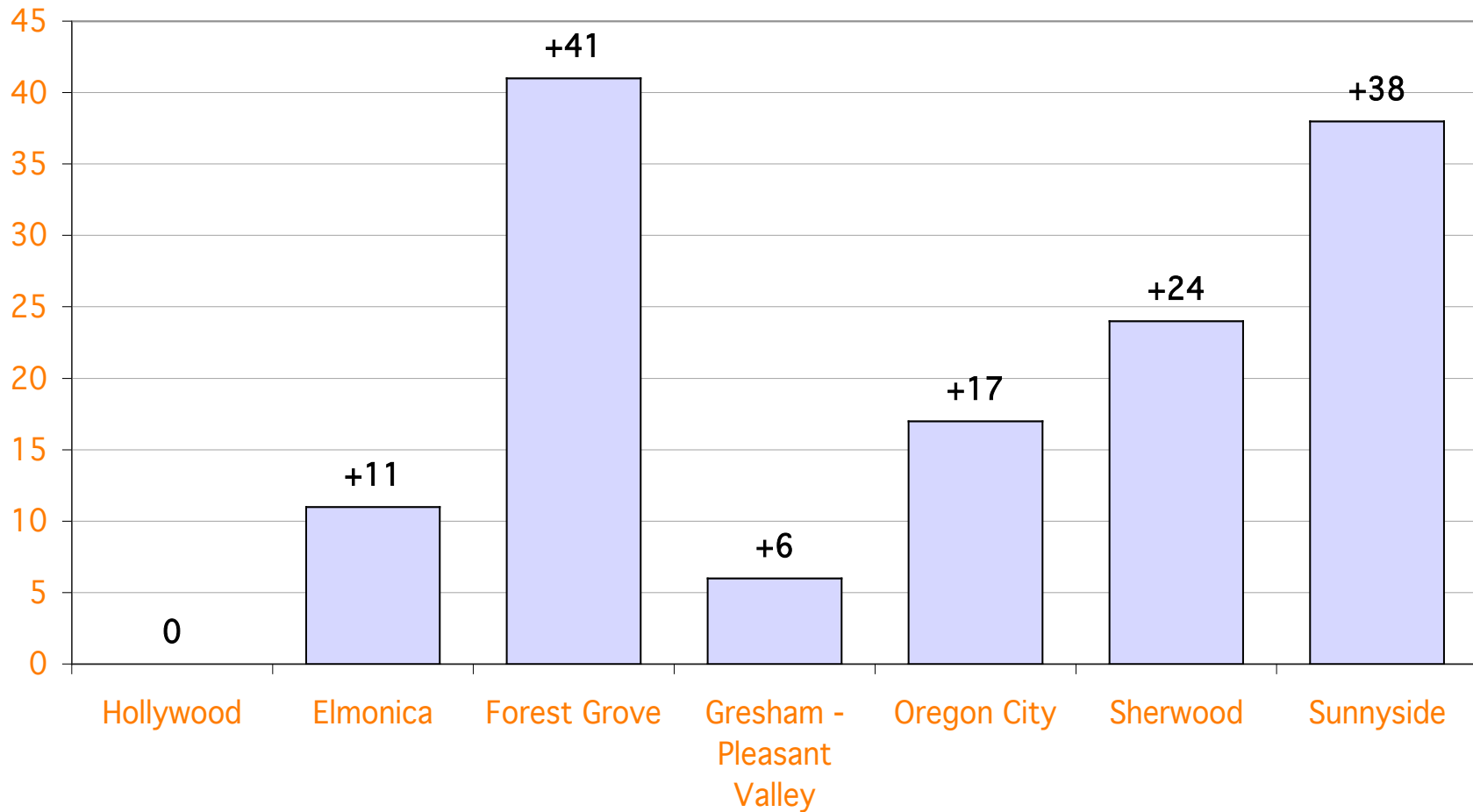


Source: TriMet

# Portland Metro

## Increases in Street Connectivity

Change in Intersections per Square Mile in Developed Portion of Sample Area



Source: Metro Planning Department