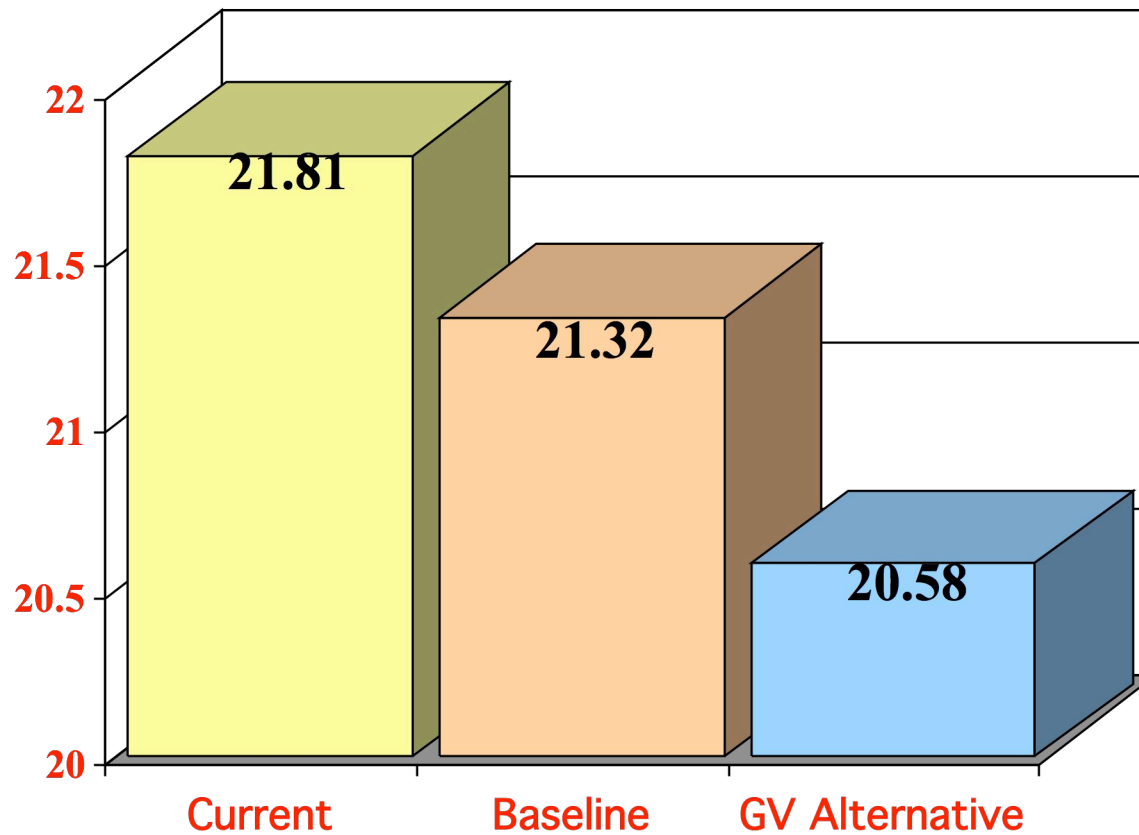
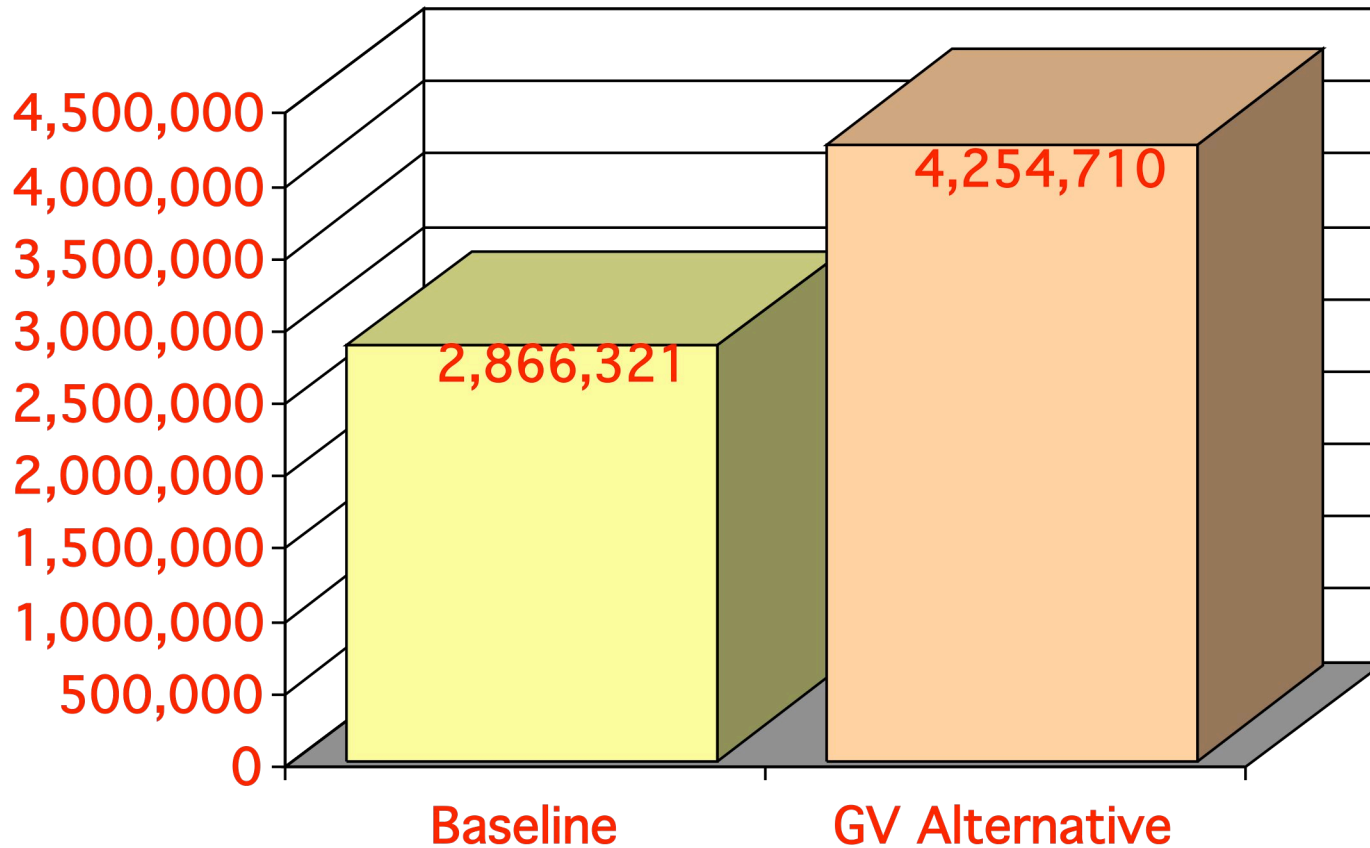


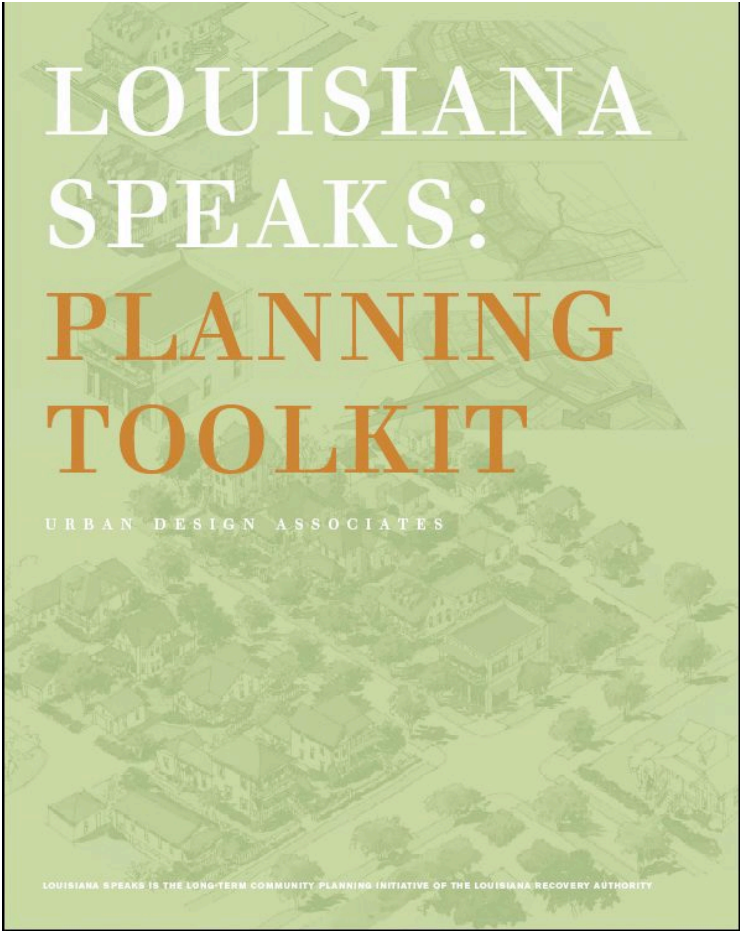
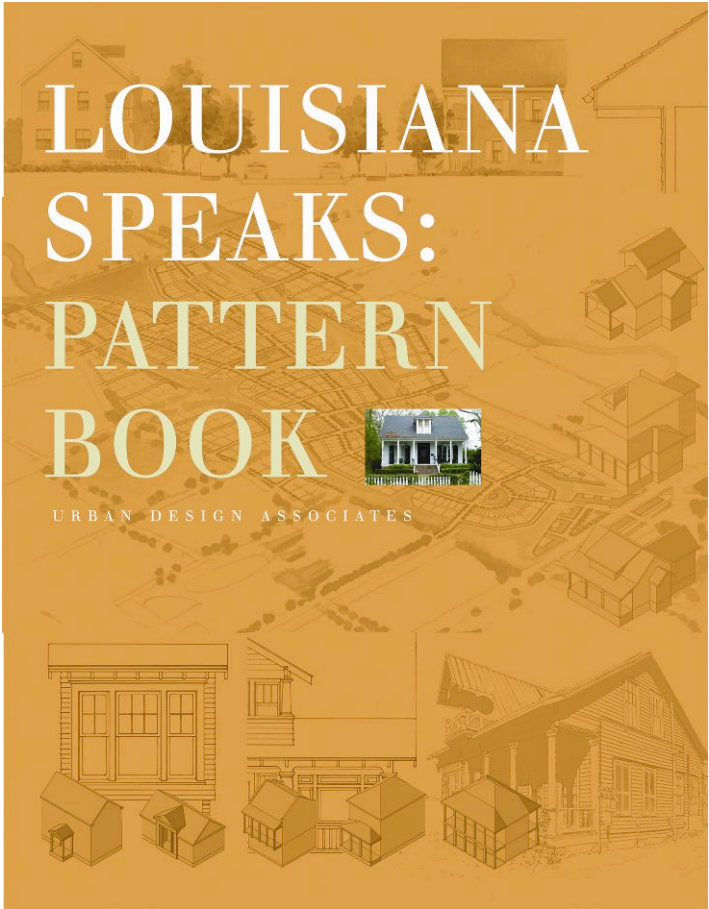
Vehicle Miles Traveled (VMT) per Capita



Total Daily Transit Boardings







DP7 Lake Charles Charrette

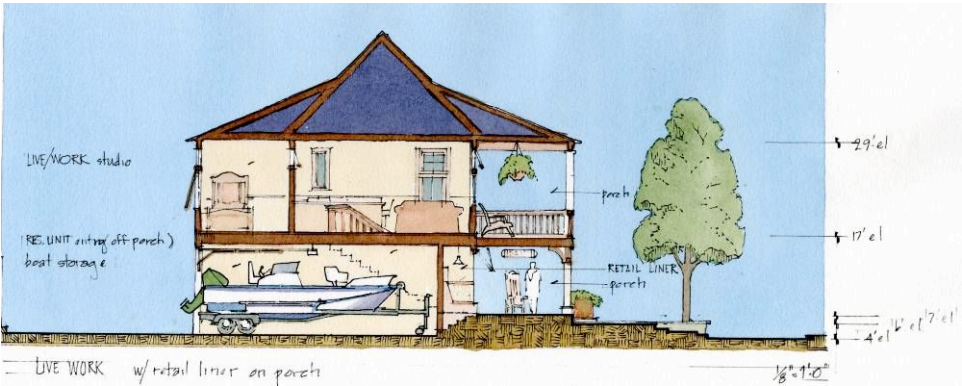


DPZ St. Bernard Parish



DPZ Vermilion Parish

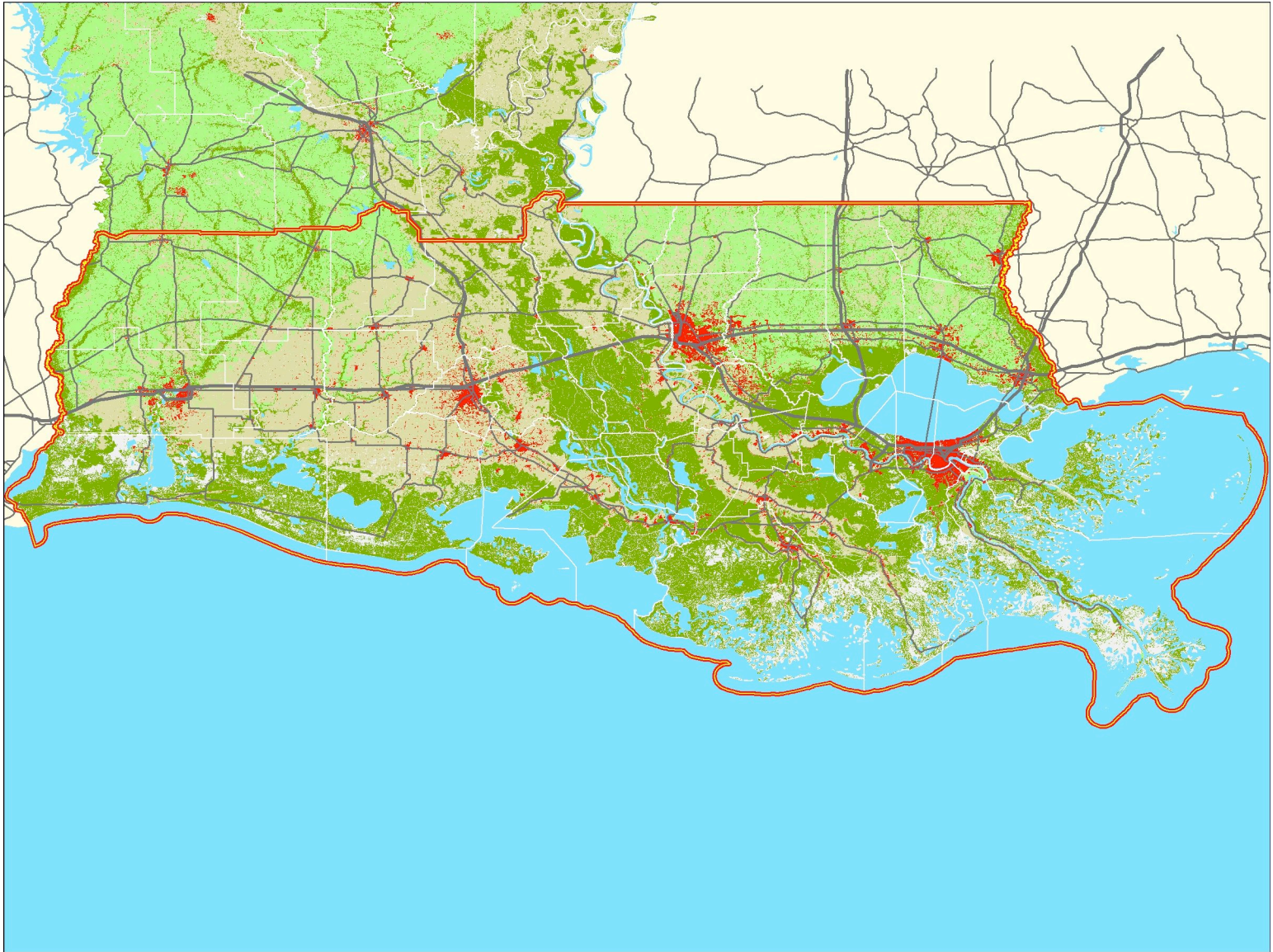
tte









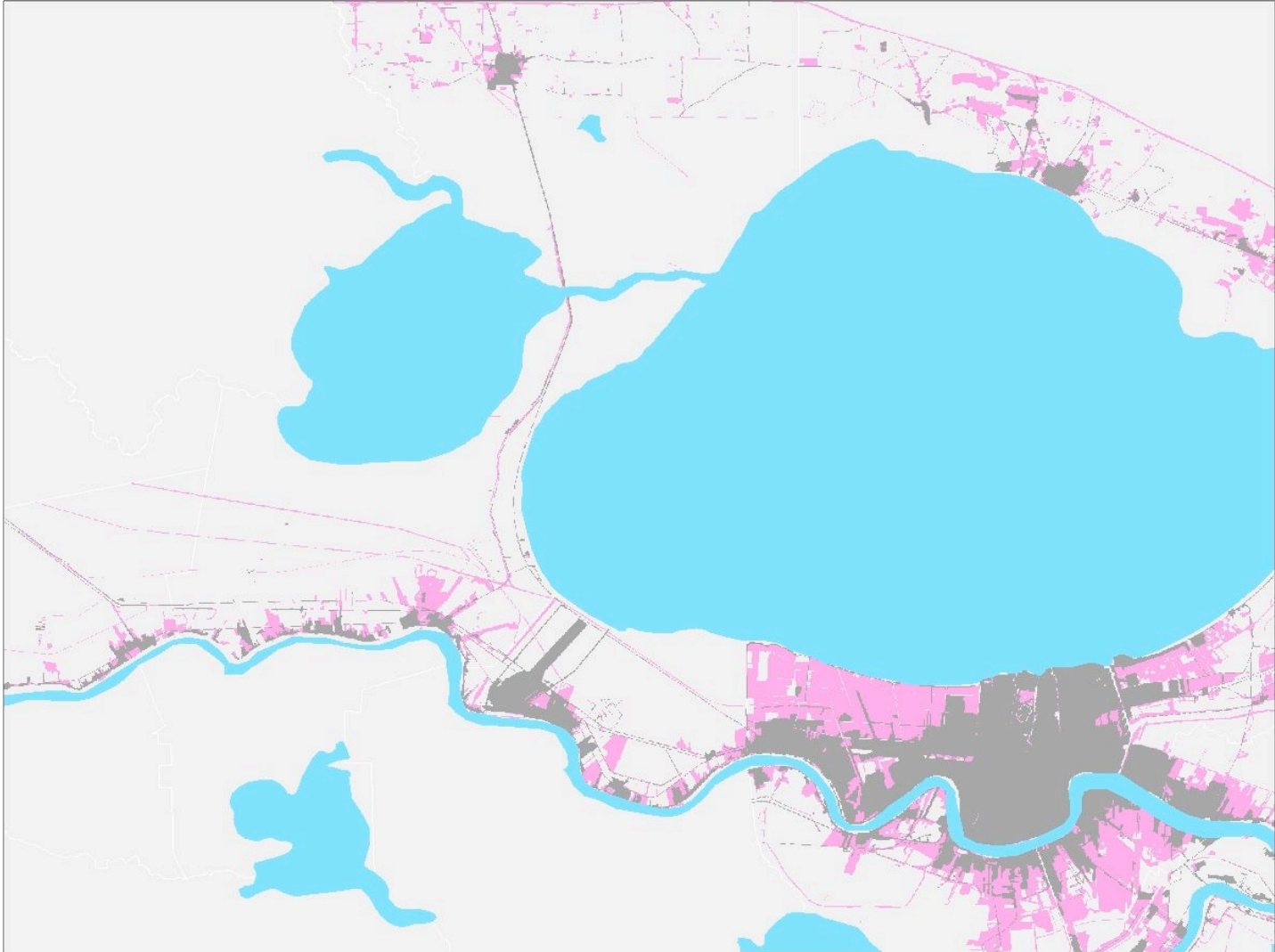




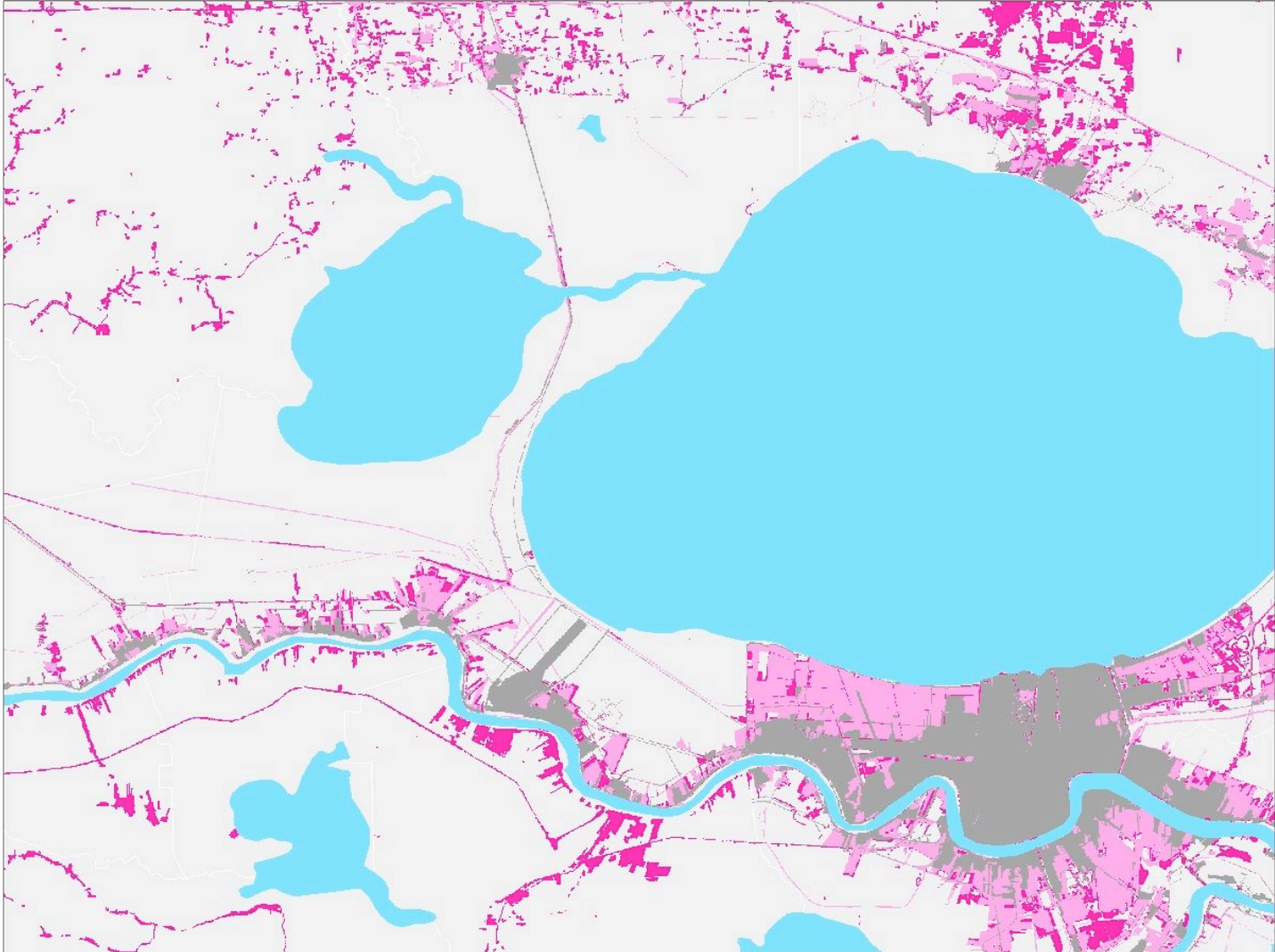
Growth Trends: Urban Land



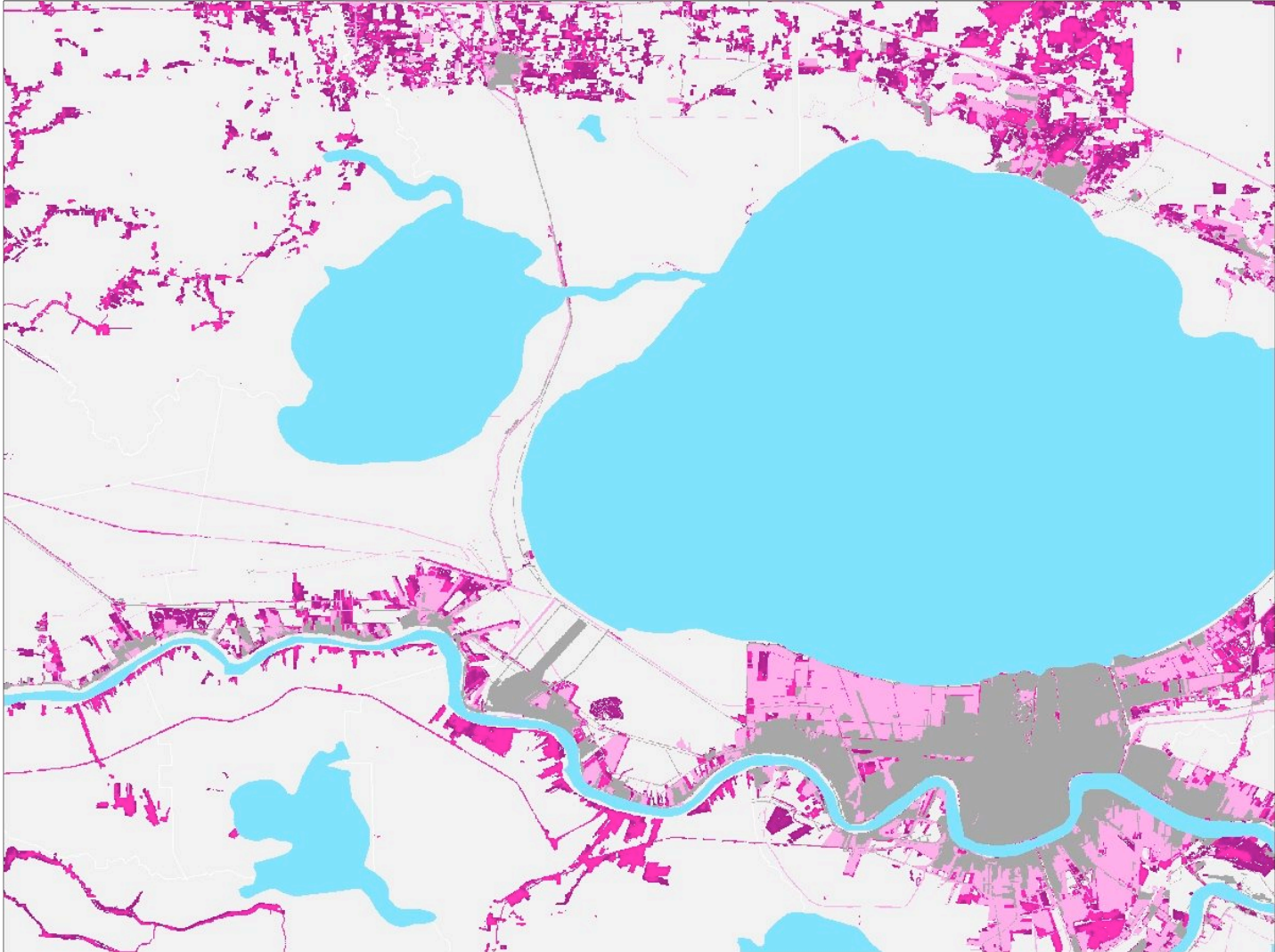
Growth Trends: Urban Land



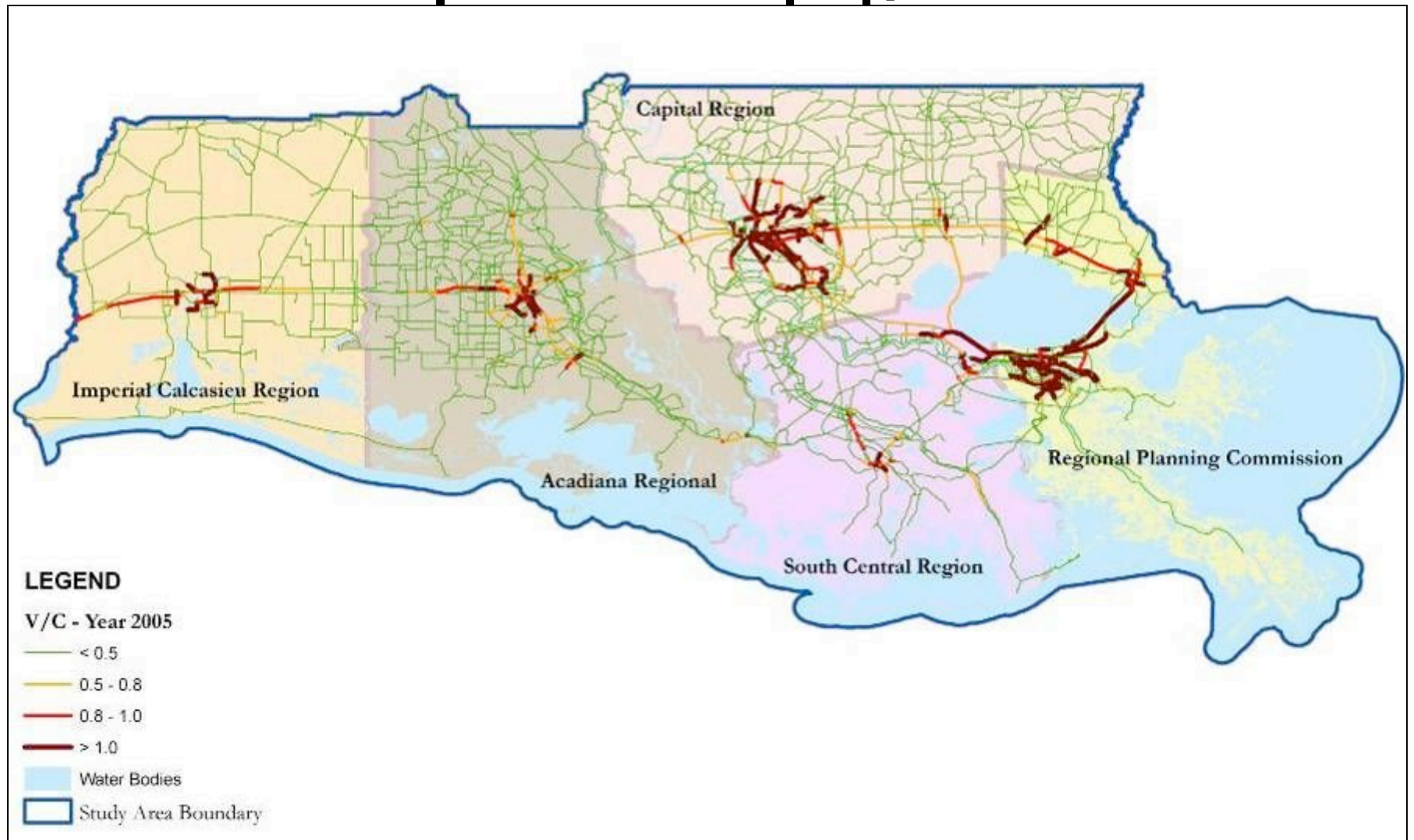
Growth Trends: Urban Land



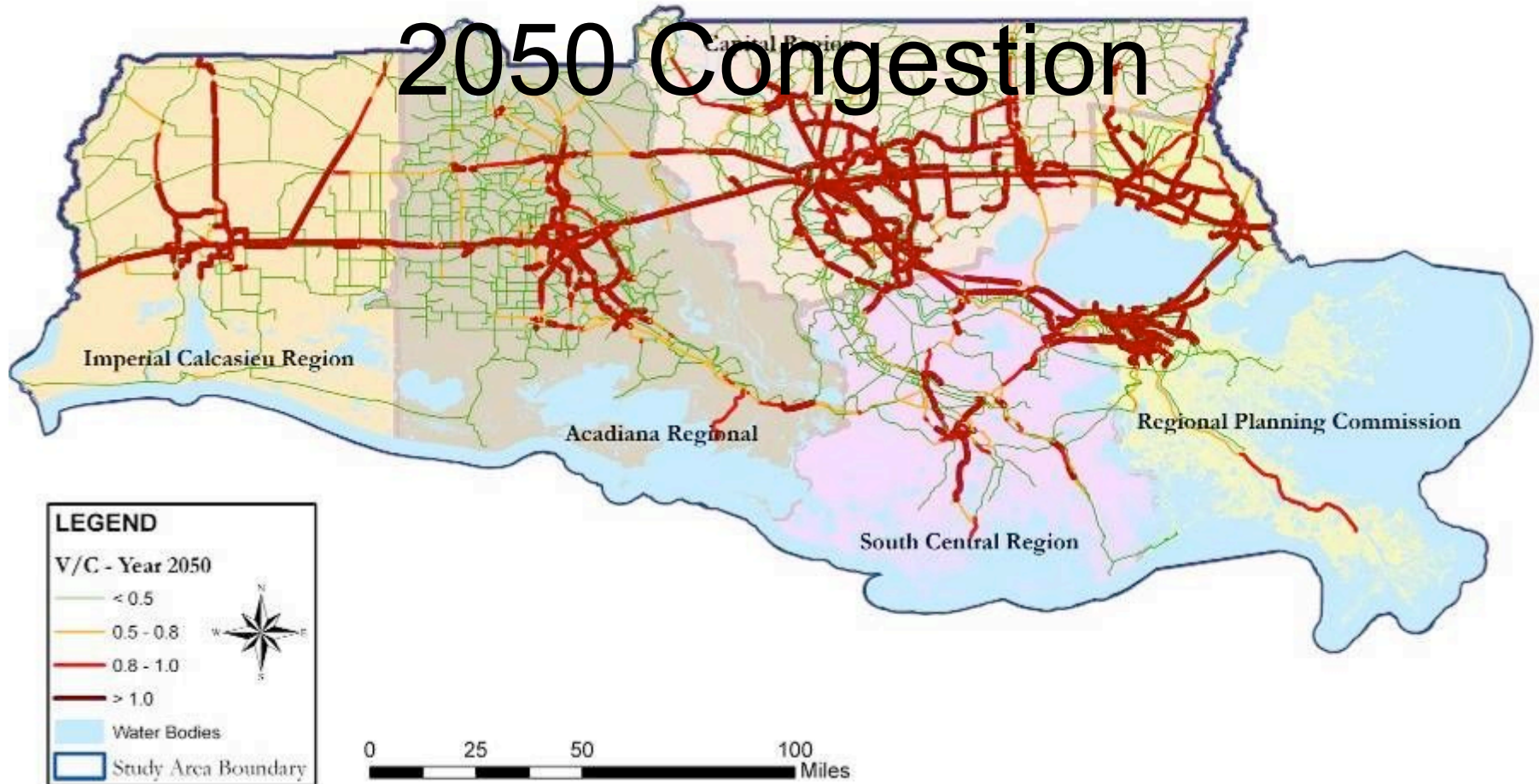
Growth Trends: Urban Land



Issue – Long Range

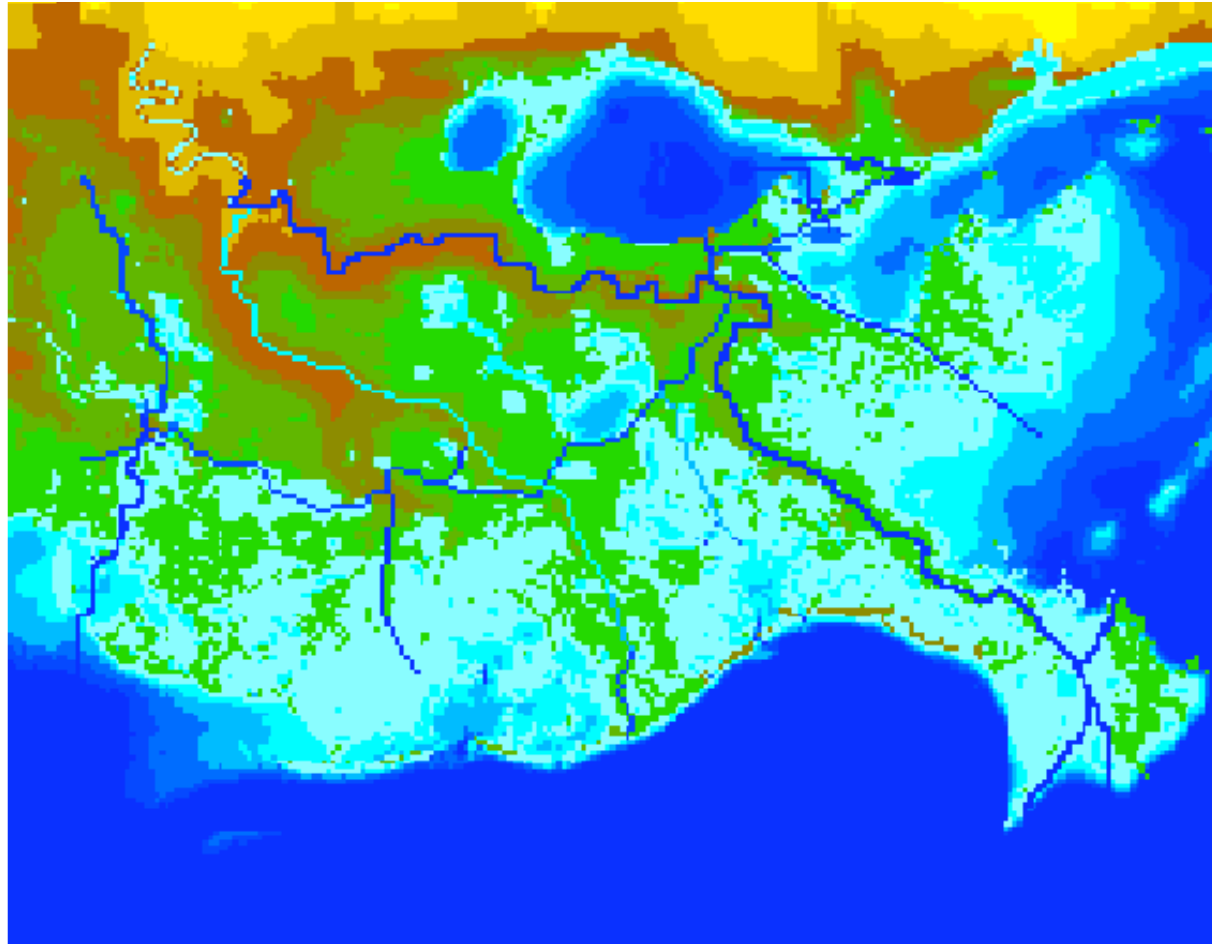


Issue – Long Range Transportation 2050 Congestion



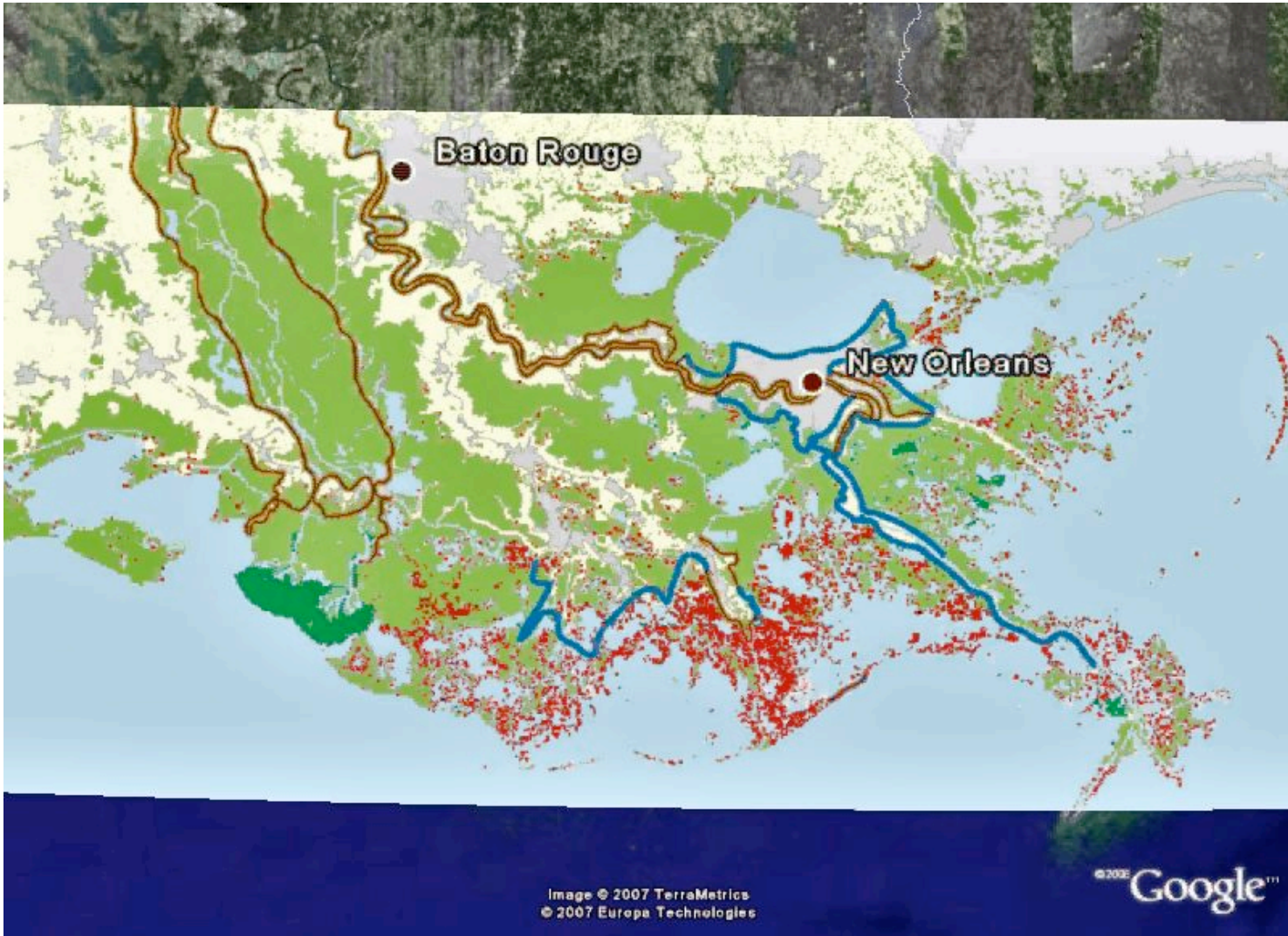
Regional Coastal Issues

1.2 million
wetland acres
lost in last
100 yrs.



Investments

L



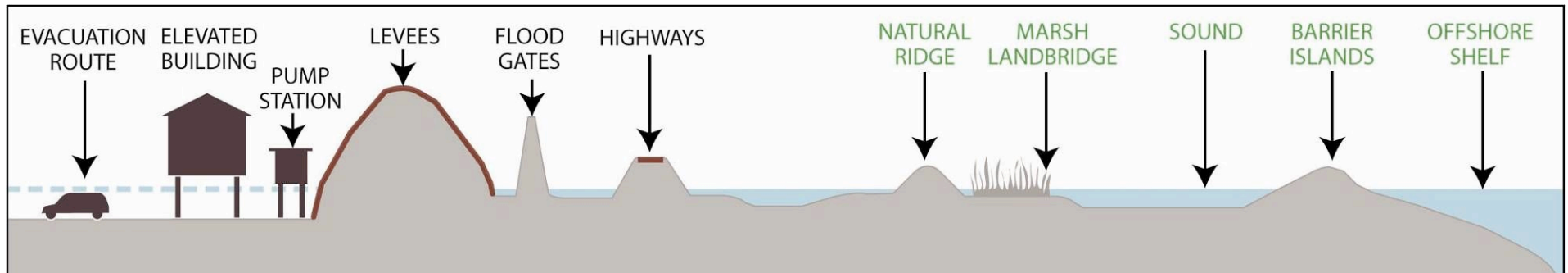
ds





The State's Proposed Plan

Creating Multiple Lines of Defense



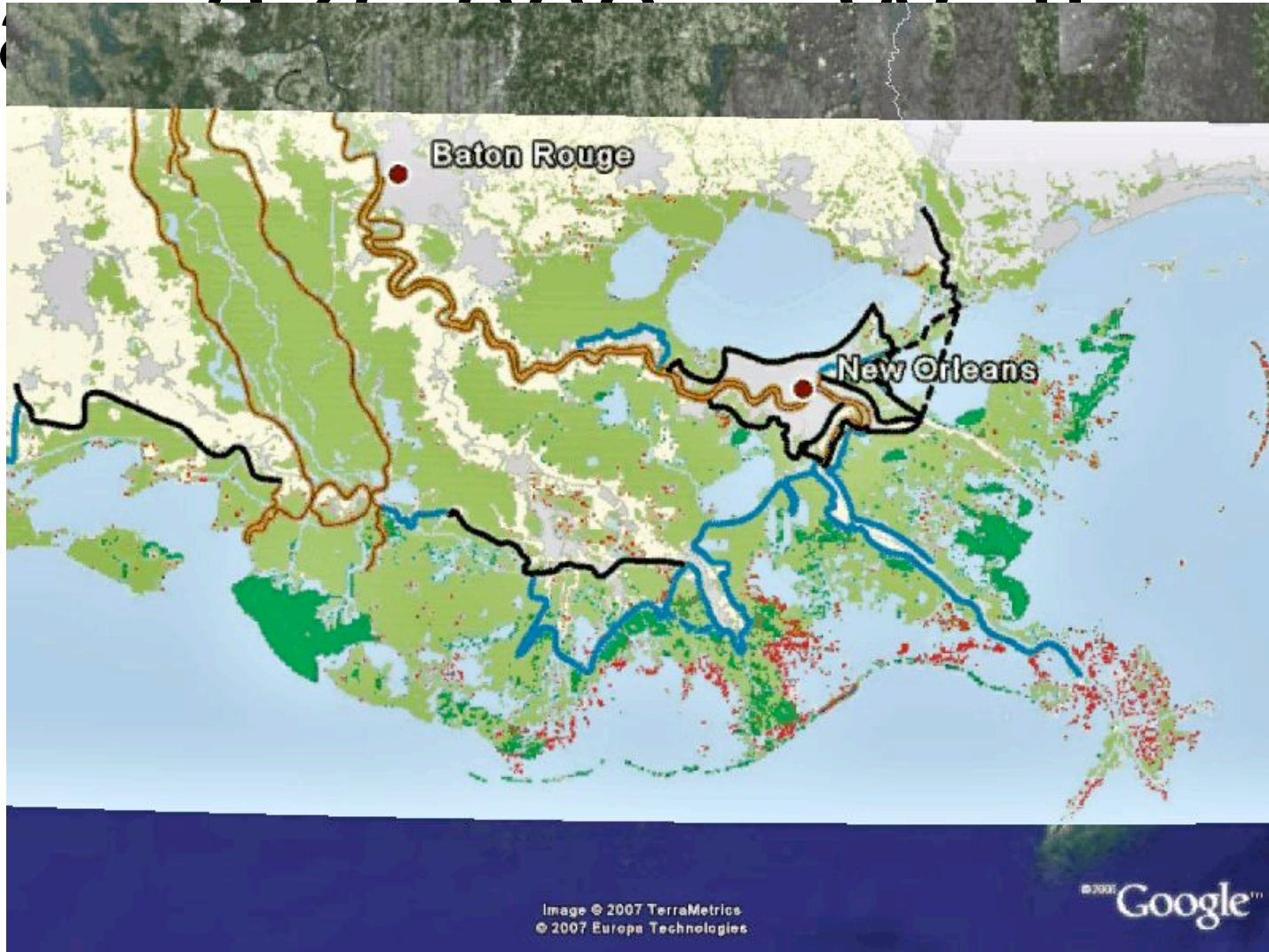
Combines levee upgrades and coastal restoration to provide the strongest defense against storms.

www.louisianacoastalplanning.org



The State of Louisiana Plan

Goal: 275,000 Wetlands

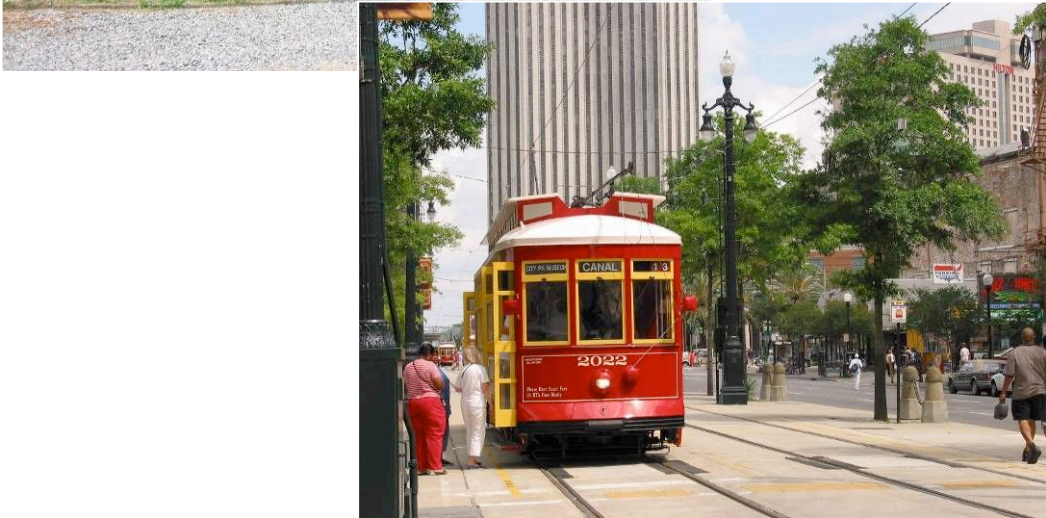


Regional Vision Poll Results:

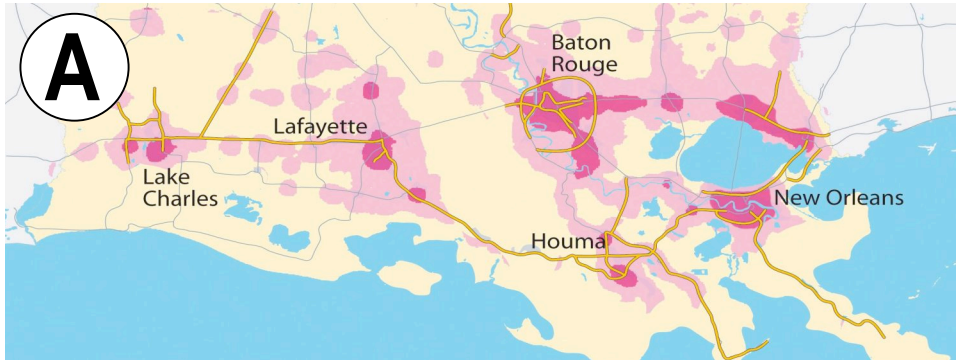
Support for Restoration and Protection



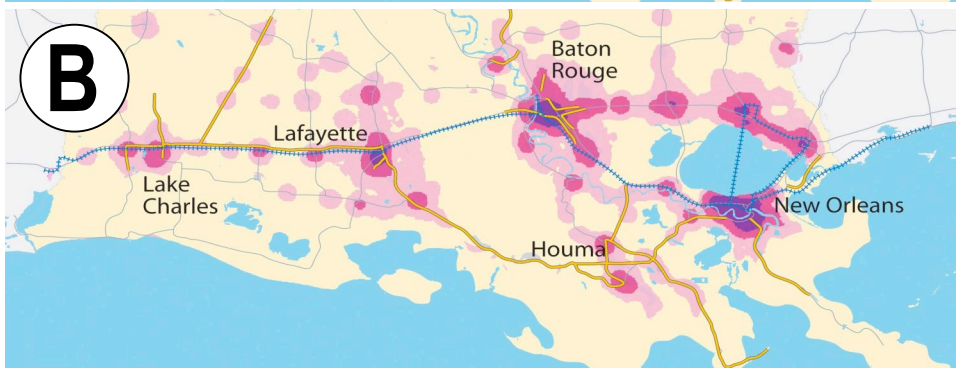
How Should We Grow?



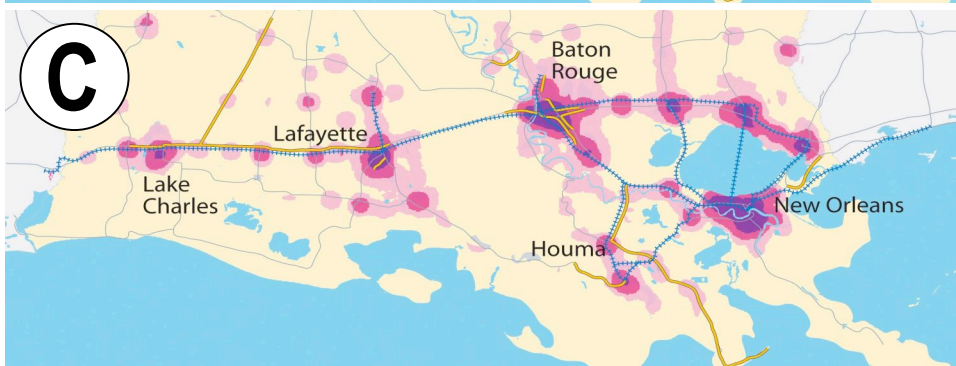
How Should We Grow?



Keep Building and Developing As We Are



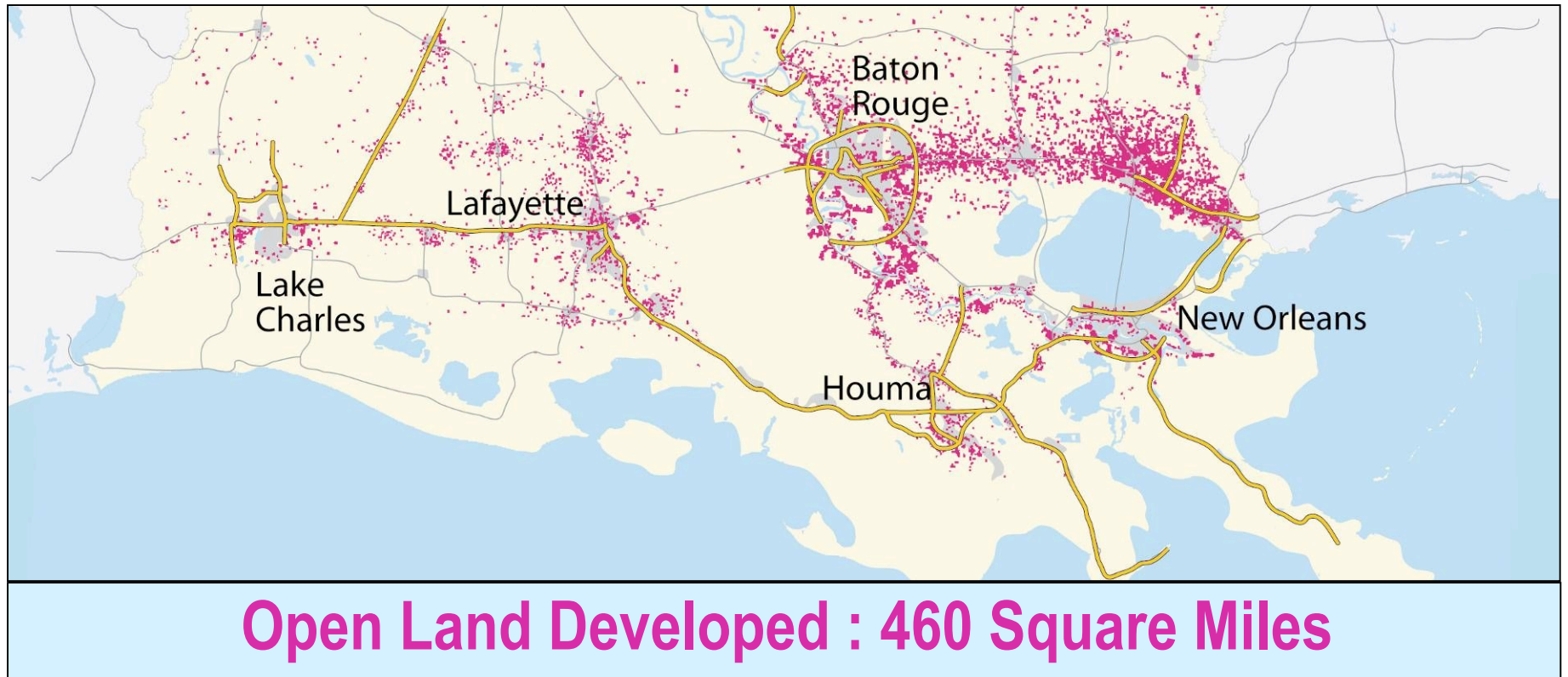
Modify Development Patterns



Focus Development on Existing Cities & Towns

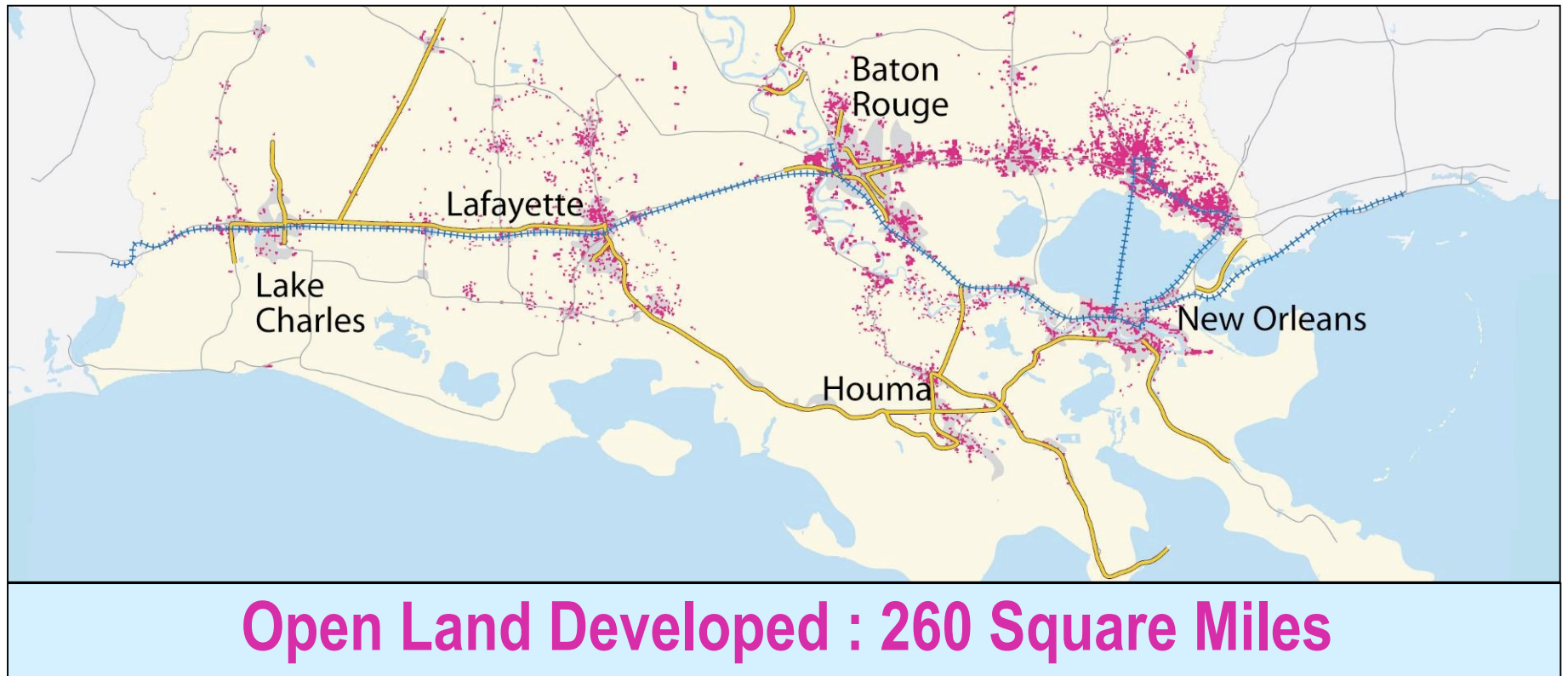
How Should We Grow?

A Keep Building and Developing As We Are



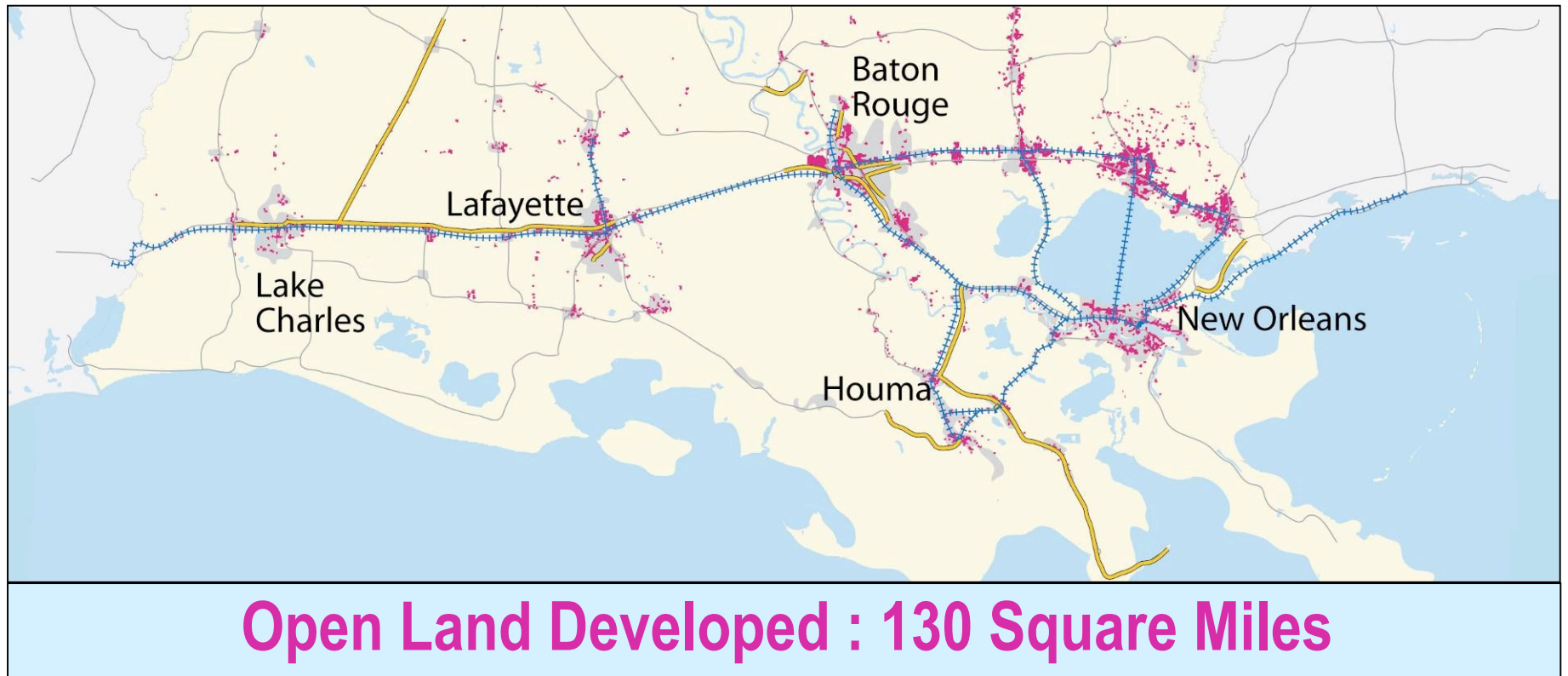
How Should We Grow?

B Modify Development Patterns

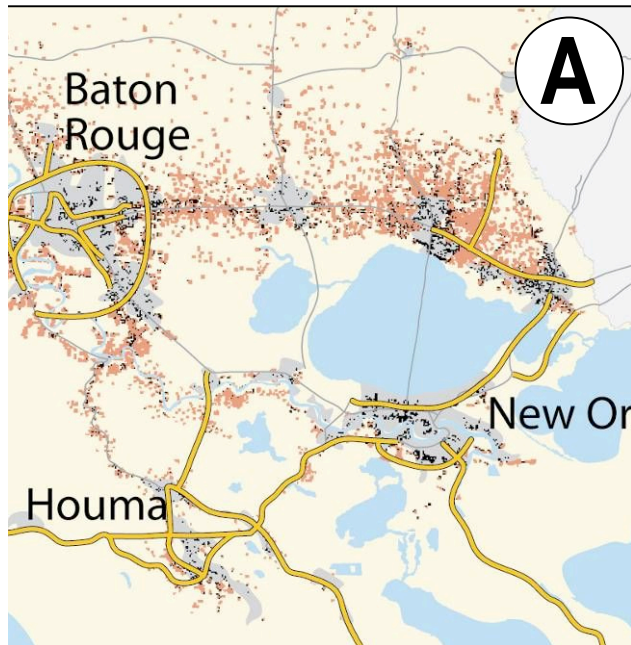


How Should We Grow?

③ Focus Development on Existing Cities & Towns



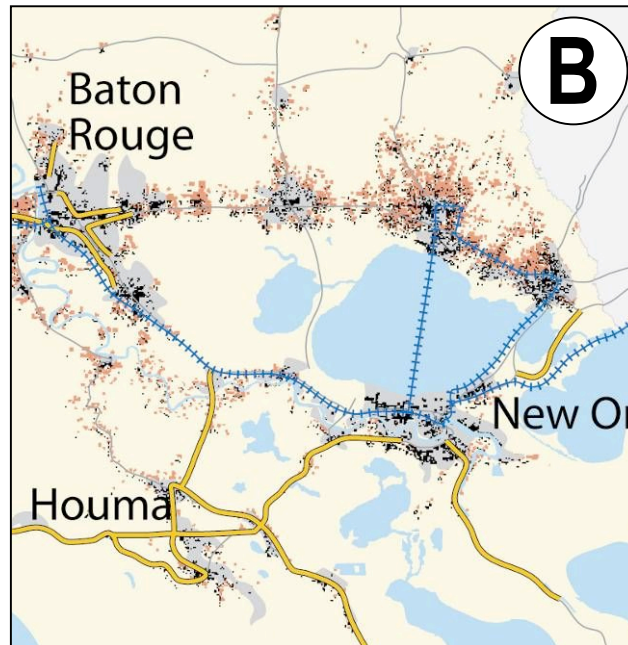
How Should We Grow?



A

Open Land : 90%
Existing Communities : 10%

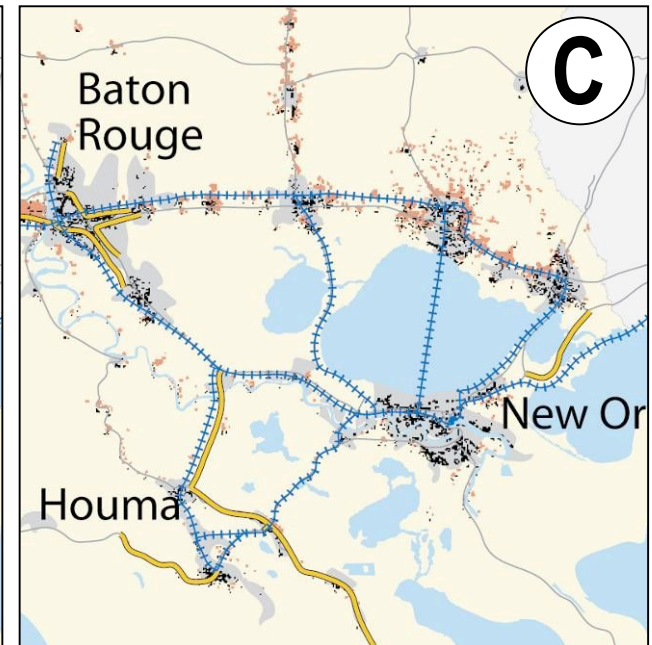
Open Land Developed
460 Sq. Miles



B

Open Land : 63%
Existing Communities : 37%

Open Land Developed
260 Sq. Miles



C

Open Land : 42%
Existing Communities : 58%

Open Land Developed
130 Sq. Miles