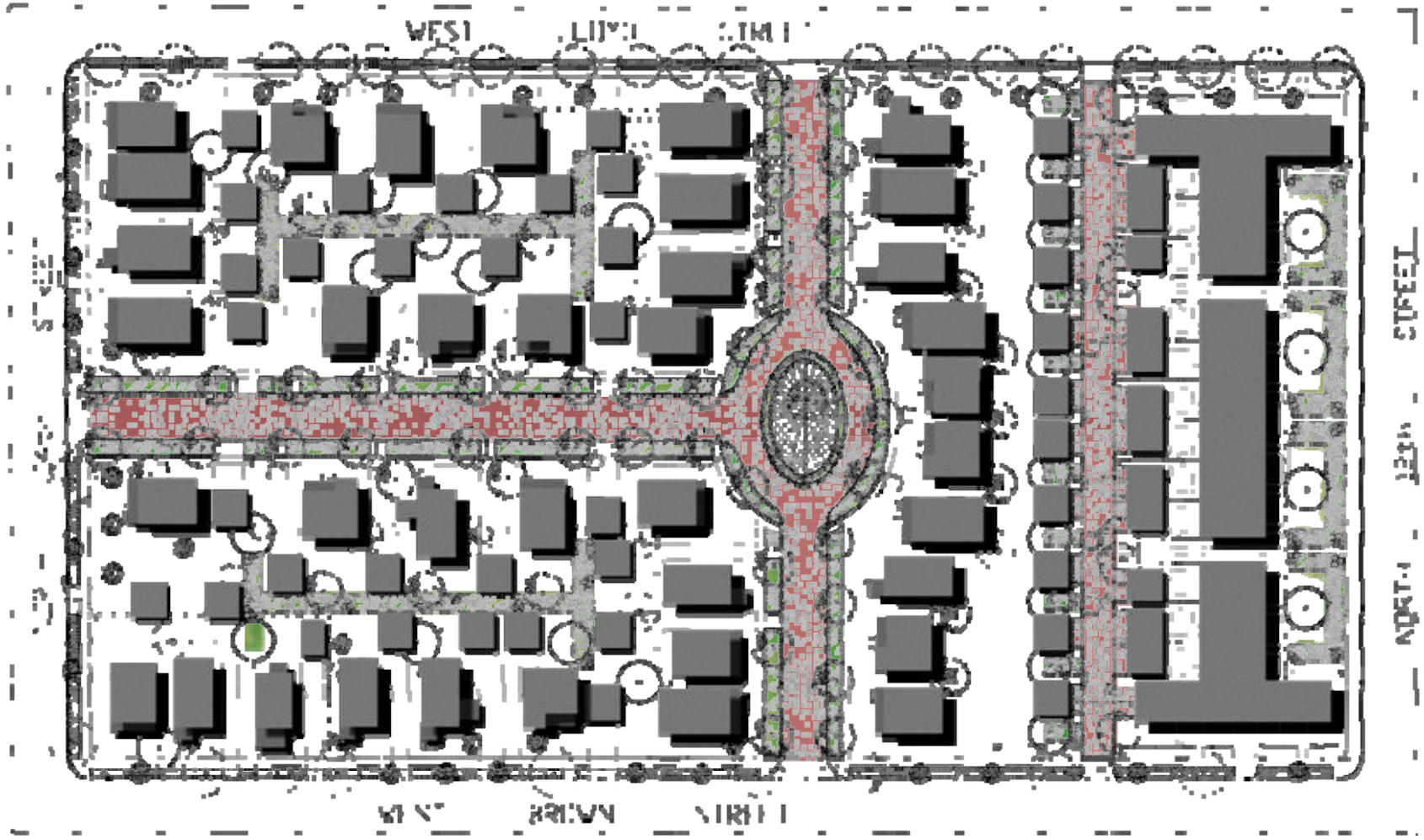




# Josey Heights Neighborhood Milwaukee, Wisconsin



# Josey Heights Neighborhood



Rain Gardens

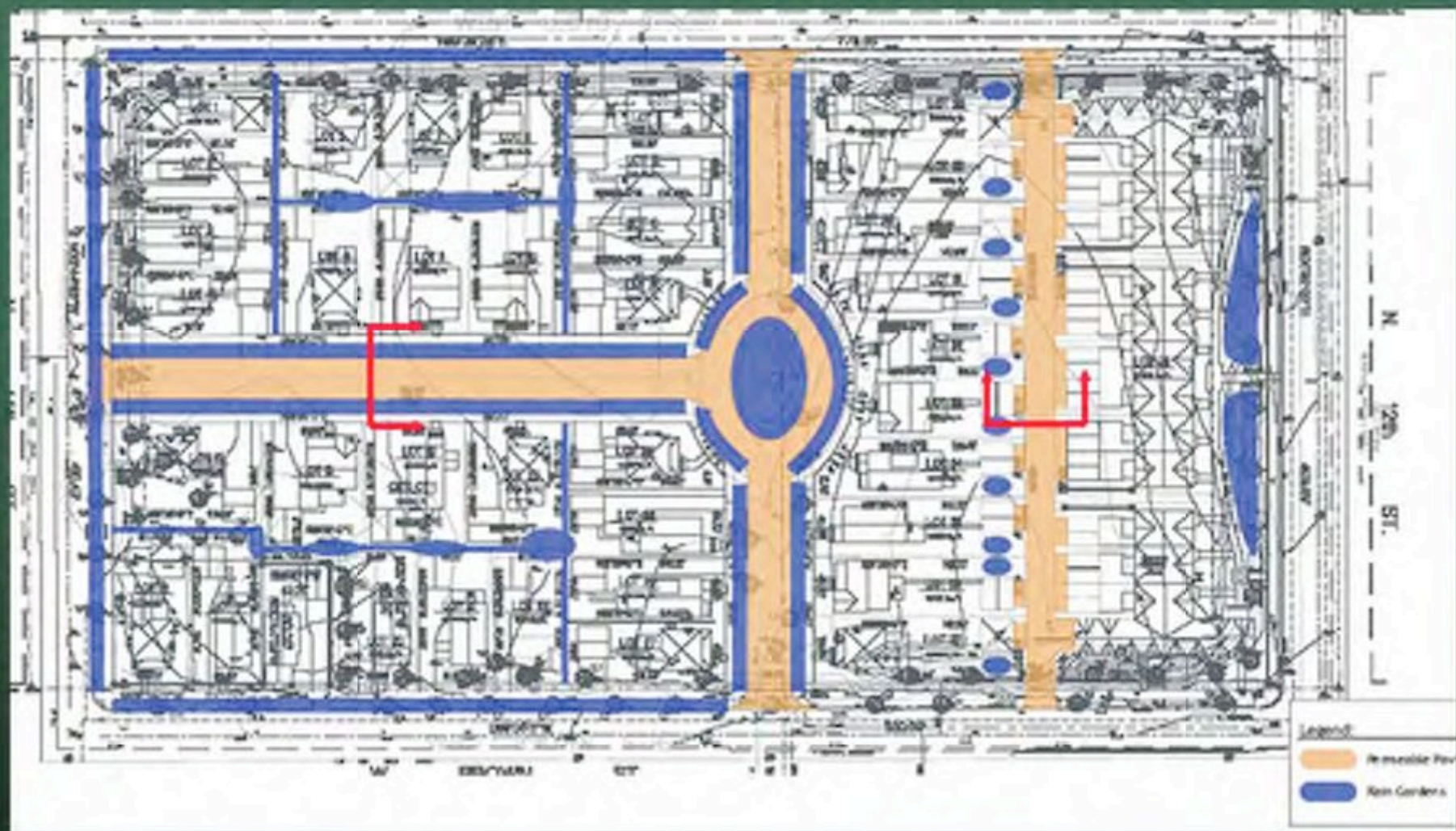
Street Bioswales

Permeable Paving





Josey Heights Neighborhood, Milwaukee, Wisconsin

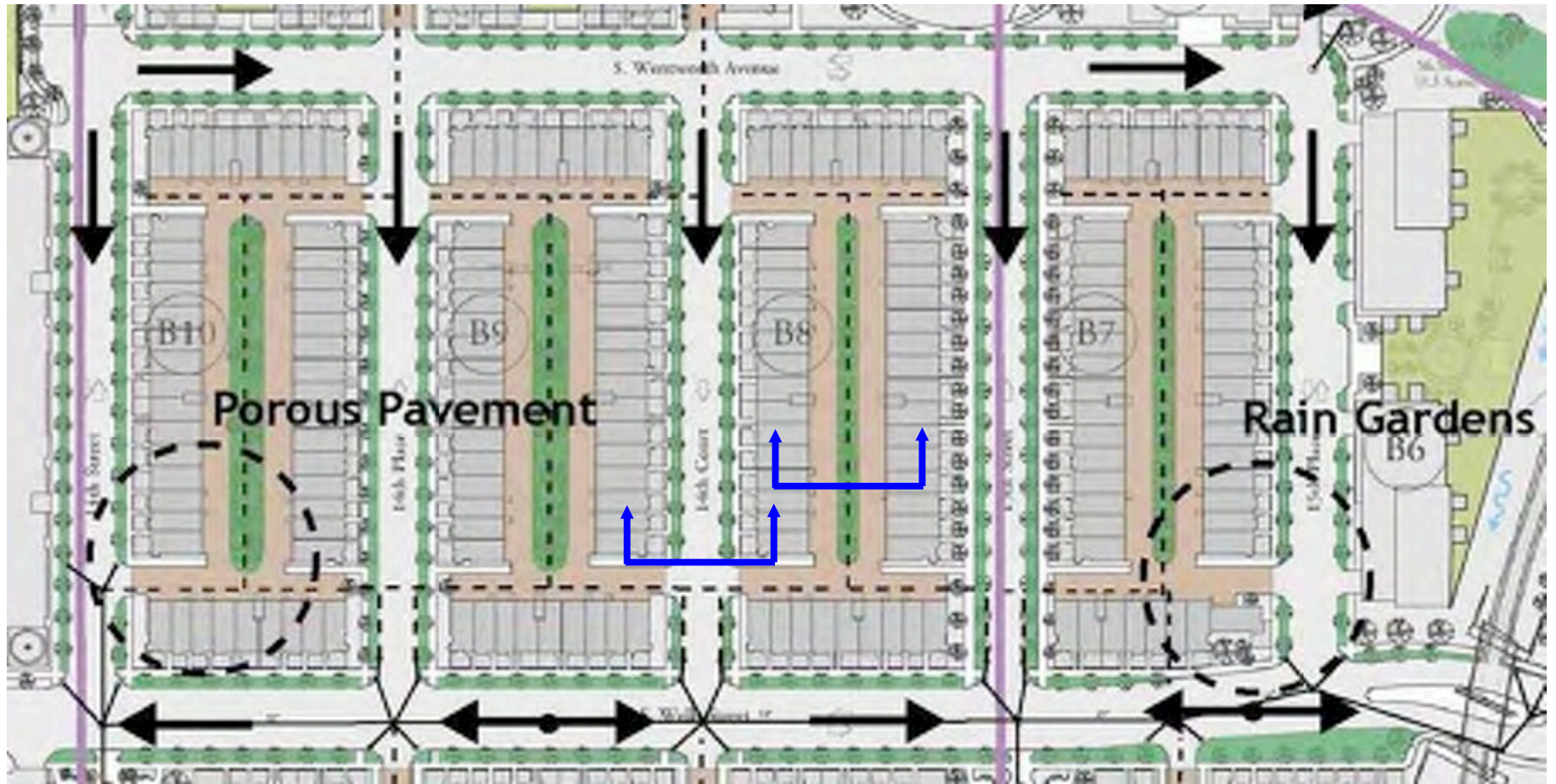




# Riverside Park

Chicago, Illinois





Riverside Park



**Run-Off Water Benefits:**

- Pollutant filtration and absorption
- Improves water quality in runoff
- Reduces chemical leaching

infiltration  
 8" sand/soil growing media  
 12" gravel infiltration beneath  
 subgrade  
 roadway



Riverside Park



# Coffee Creek Center

Chesterton, Indiana



## Water Plaza



Water Plaza

Coffee Creek Center

Natural Designs for Water Filtration and Aeration



Coffee Creek Center



Coffee Creek Center

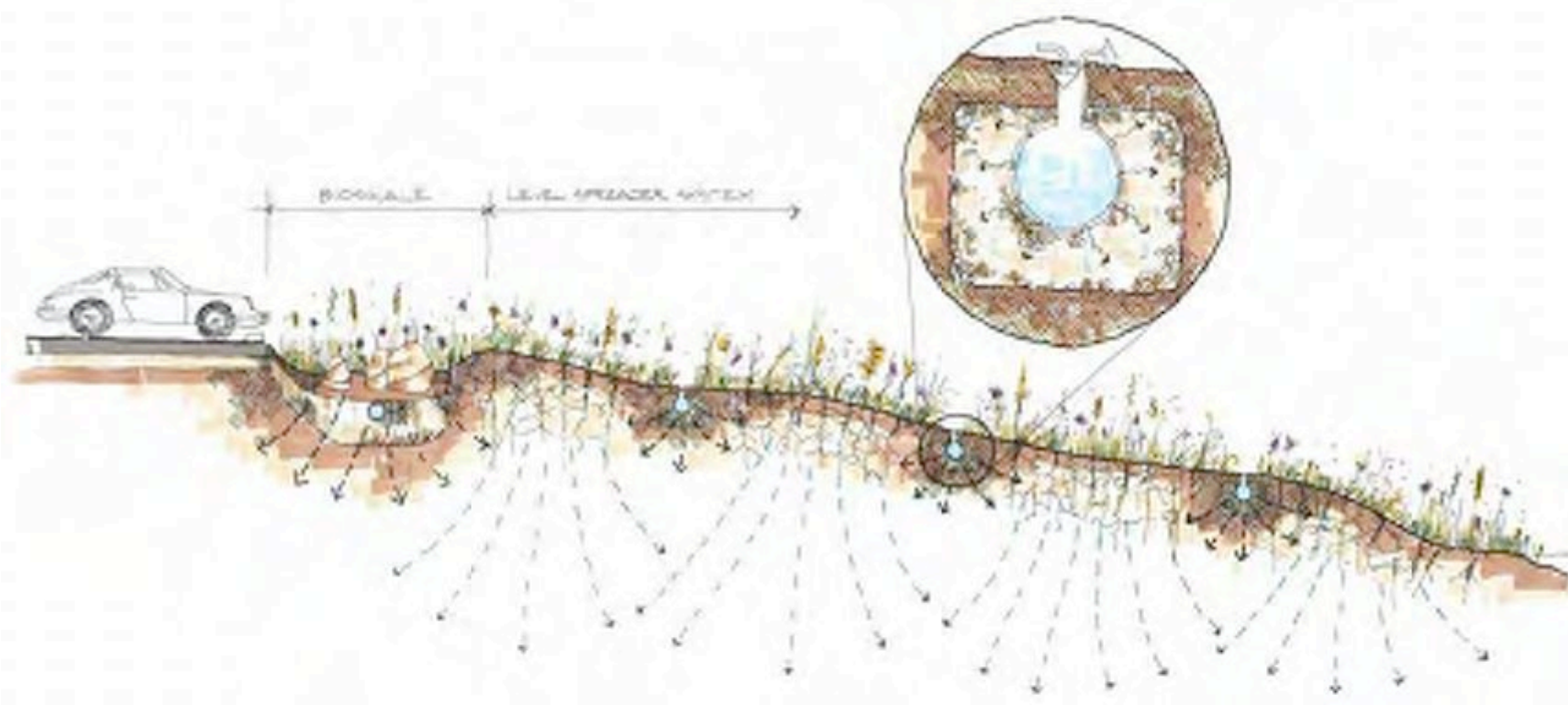
## Level Spreader System



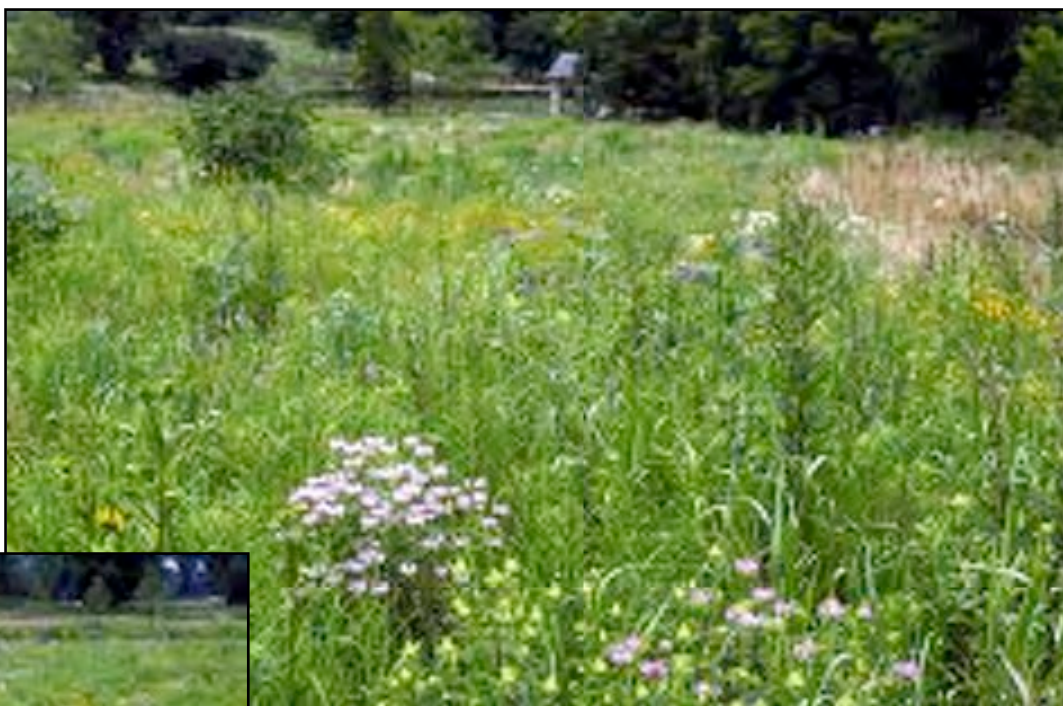
Coffee Creek Center

# Blackberry Creek

Water Infiltration Concepts

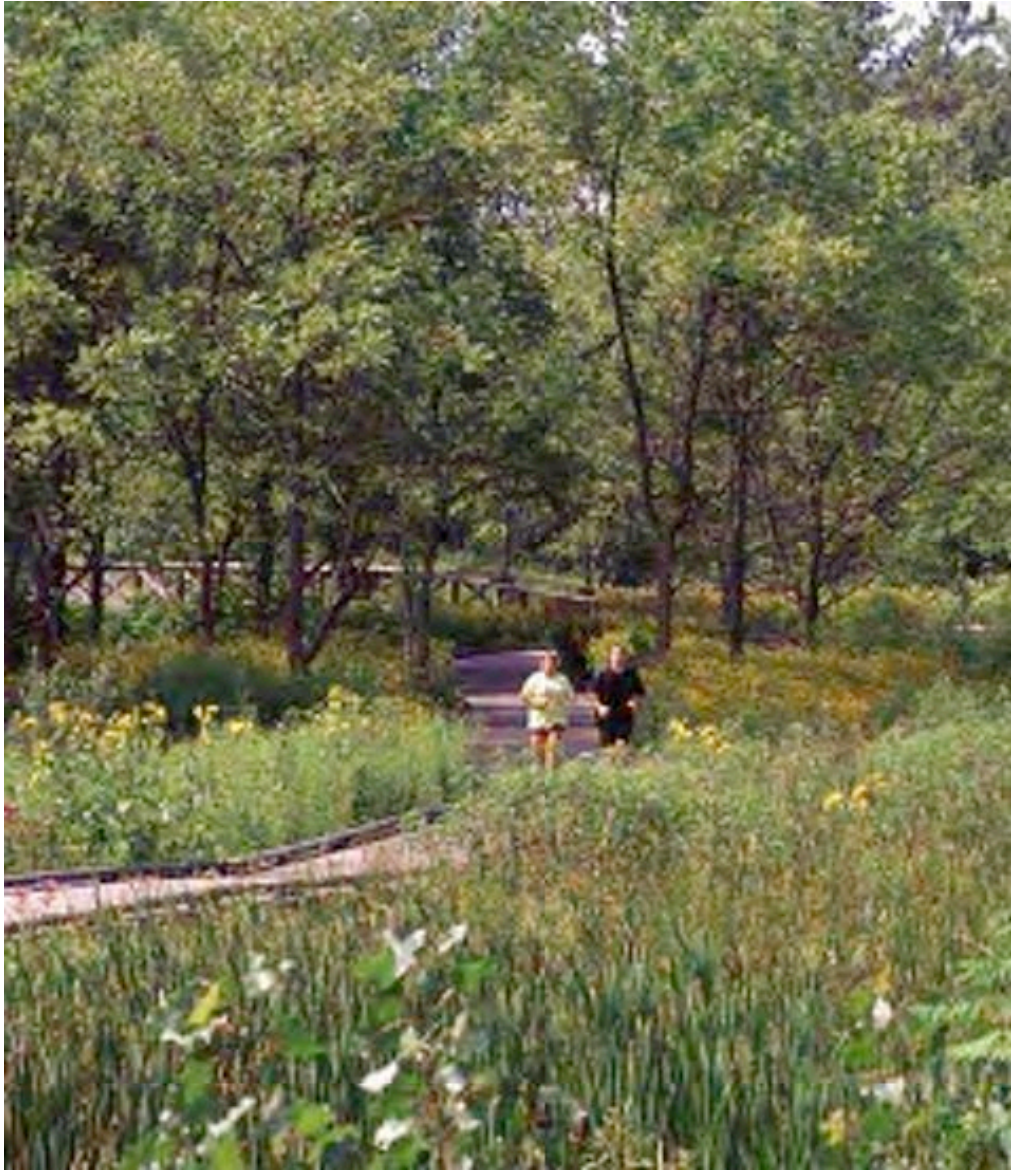






Coffee Creek Center





Coffee Creek Center





Coffee Creek Center



# Newland Communities

Mid-Atlantic Region

## **HOME**

As expressed by...

We create places where people feel comfortable and at home in their neighborhoods, with opportunities to live and share meaningful experiences with friends and family in ways that matter most to them.

## **Healthy Living Systems**

As expressed by ...

We are intentional about the interaction of place, people, environment and investment, to heal the land, provide a tradition of pride and an authentic sense of place.

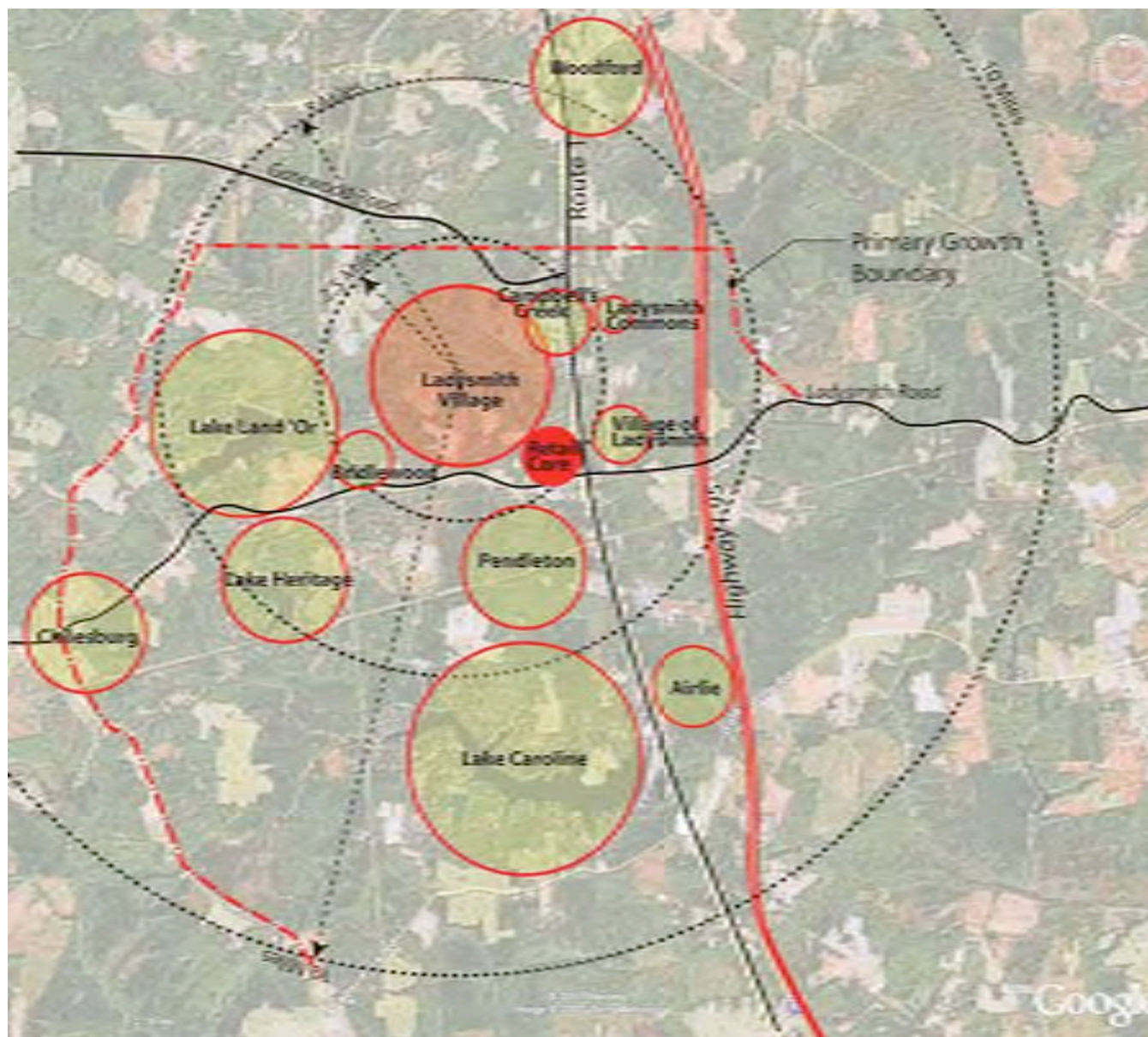
## **Innovation**

As expressed by ...

We proactively challenge the status quo, inside and outside our industry, to establish innovative best practices that improve our customers' and team members' quality of life.

# Ladysmith Village

Caroline County, Virginia





## Project Principles

---

1. Create a clear and logical public realm of purposeful places
2. Create a community of connected districts within the town of Ladysmith
3. Define the regional context of Ladysmith Village in Caroline County
4. Engage river park as the primary orientation and healthy living system
5. Establish baseline for green builder practices



*Lady'smith*  
A NEW DEVELOPMENT

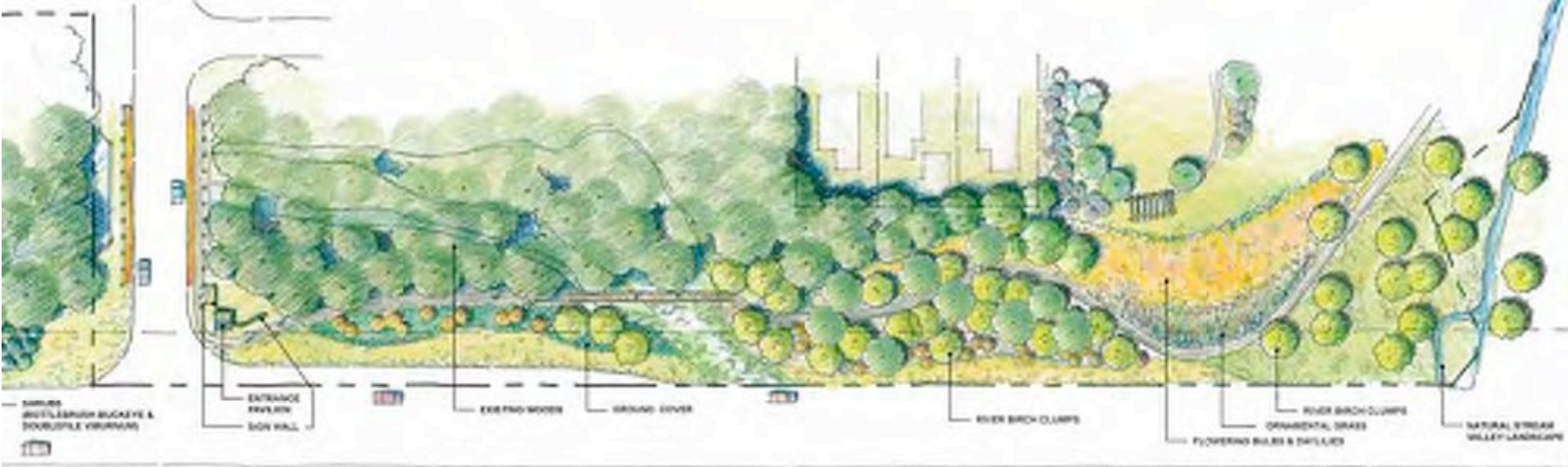


Can David Bennett add his slide of the  
South River Sanctuary here?

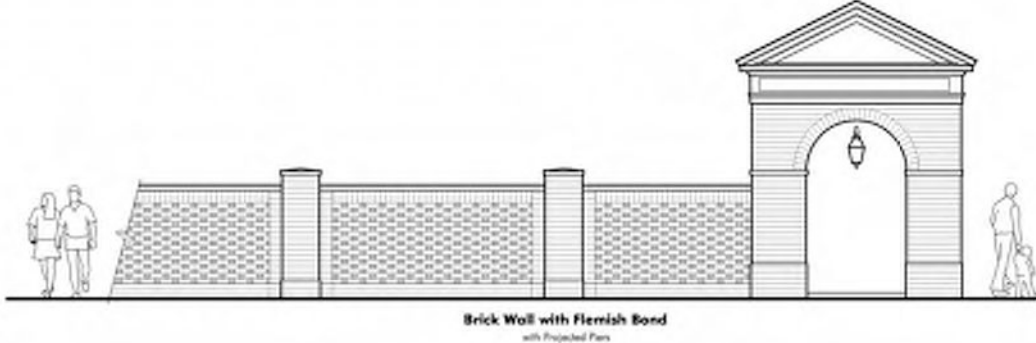




# Route 1 Entry Sequence



Entrance Sequence from Clara Smith Drive to South River











# RIVER ROAD

Wilmington, North Carolina



## Project Principles

---

1. Architectural variety and authenticity to Wilmington
2. Create community interaction through neighborhood, amenity and programming design
3. Strong relationships to water and outdoors
4. Village core to act as hub of community, the heart and soul of the community



# RIVER ROAD

EXISTING CONDITIONS



# RIVER ROAD

EXISTING CONDITIONS



# RIVER ROAD

EXISTING CONDITIONS

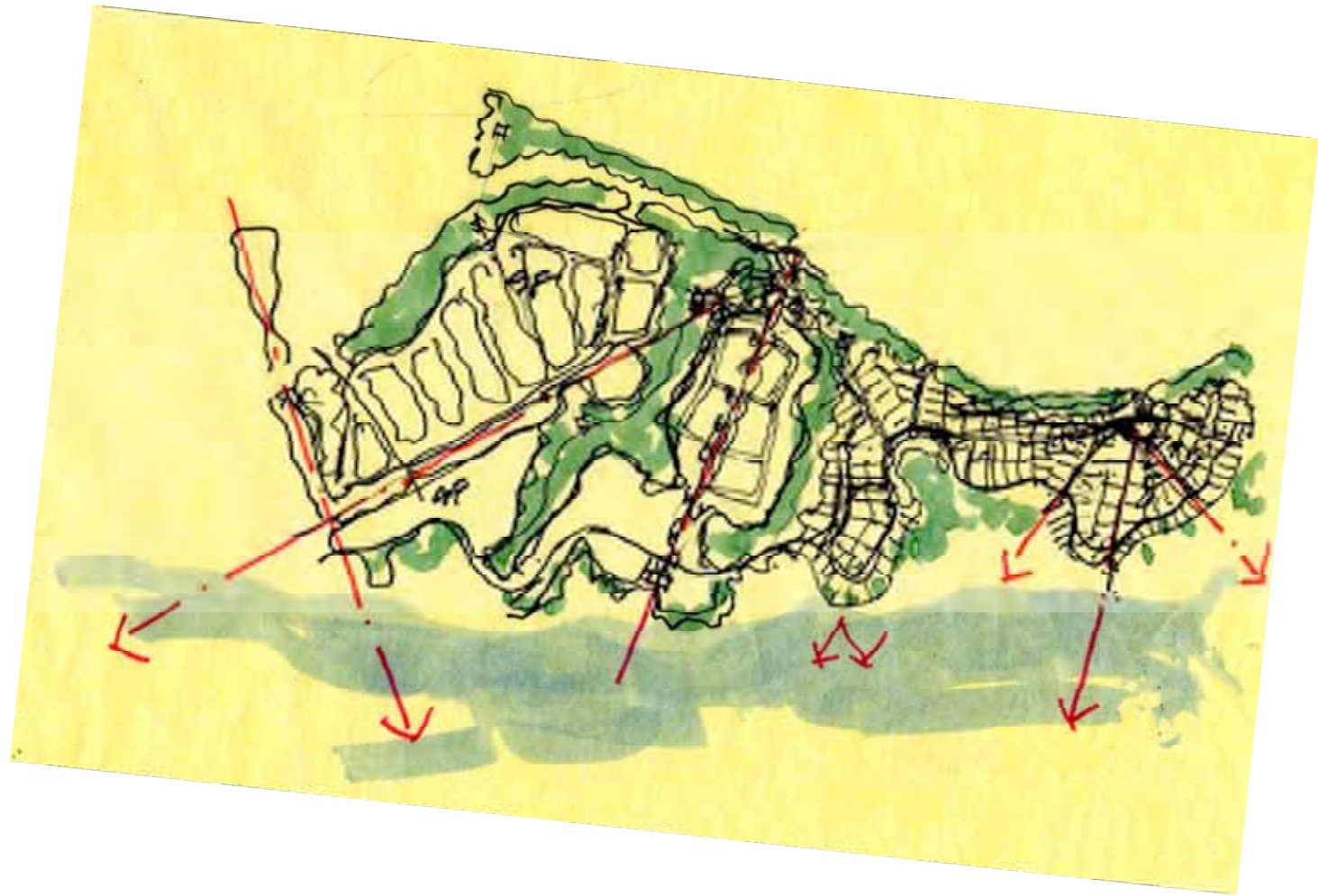


# RIVER ROAD

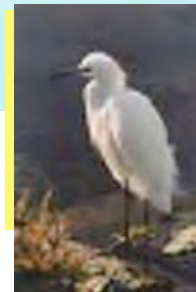
EXISTING CONDITIONS





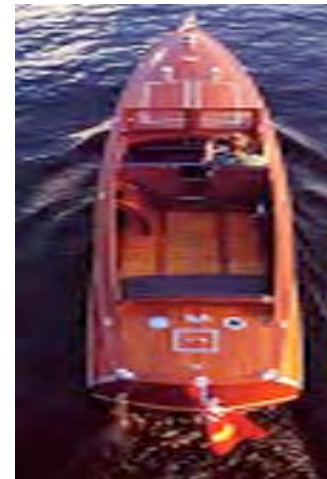






# RIVER ROAD

MASTER PLAN






















**Secret**

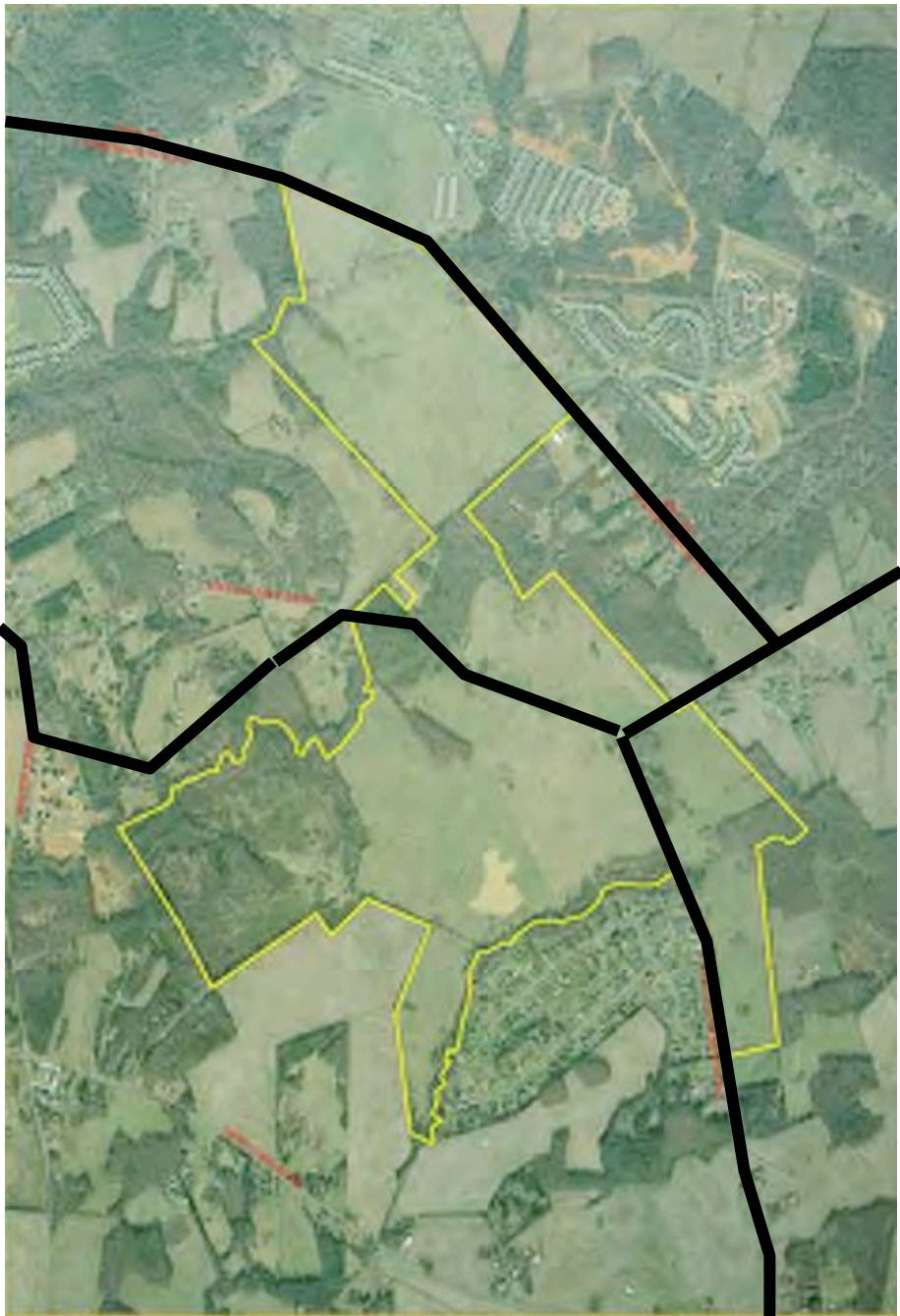
**Union County, North Carolina**



 **Newland  
COMPANIES**  
www.newland.com

**SECRET PROPERTY**  
Union County, NC

 **North Carolina  
Department of  
Transportation**



**SECRET PROPERTY**  
Union County, NC

© 2011 Newland Companies  
All rights reserved.





