

# Why Do Our Buildings ... and What Can We Do About It?

---



# The Prince's Foundation

---

The Prince's Foundation for the Built Environment is an educational charity founded by HRH The Prince of Wales to improve the quality of people's lives by teaching and practising timeless and ecological ways of planning, designing and building. We are one of 24 charities for which the Prince of Wales is President, together we comprise the largest multi-cause charitable enterprise in the United Kingdom.



# Evolving Tradition: Learn, Practise, Teach



**The Good Homes Alliance is a group of housing developers, building professionals and other industry supporters whose aim is to build and promote sustainable homes and communities and to transform the whole of UK house building into a sustainable endeavour.**

**The GHA was launched on 28<sup>th</sup> February 2007 as a member-based Community Interest Company (CIC)**

# Experimenting with Simple, Natural Building Systems

---



# Ecohome Award 2007: Which Upton building won?



A: All of them; they all meet the same standard!

# British Gas Study, November 2006

---

IRT Surveys conducted leak tests on representative buildings in mid 2006 for British Gas and The Prince's Foundation.

Best practice is 8 leakage ( $\text{m}^3/\text{hr}/\text{m}^2$ )

Good practice is 15 leakage ( $\text{m}^3/\text{hr}/\text{m}^2$ )

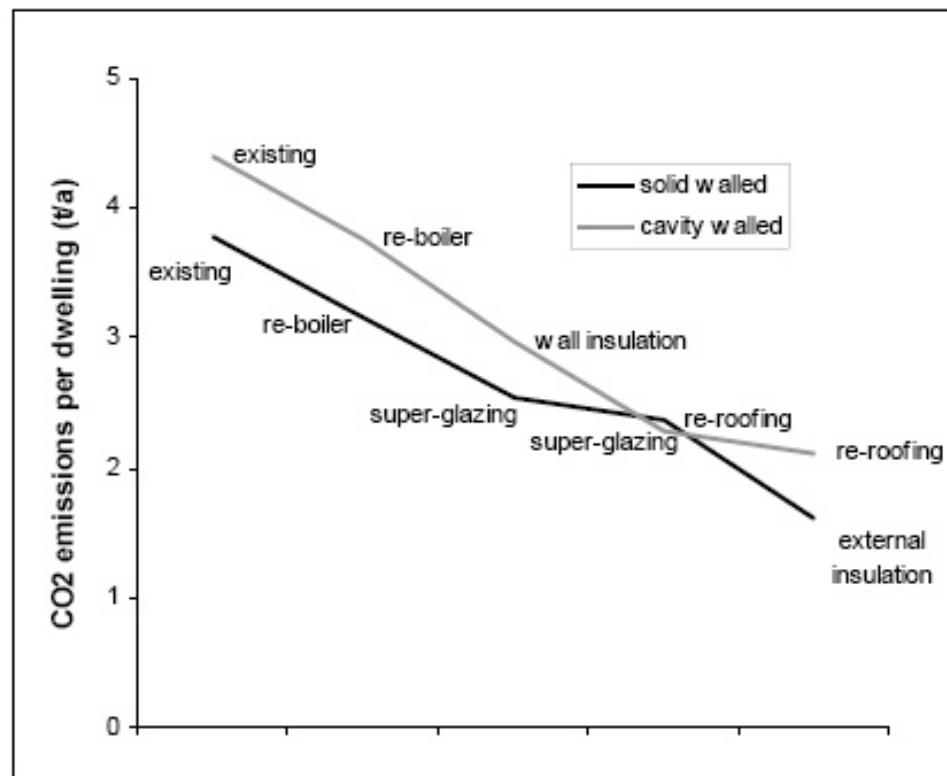
<b>Building Type</b>	<b>Leakage (<math>\text{m}^3/\text{hr}/\text{m}^2</math>)</b>
Tudor & Victorian	10.11
1960's	15.1
1970's	11.7
1980's	12.0 - 40.1
1990's	12.0 – 23.6

Conclusion: poor workmanship and construction methods offset impact of contemporary building regulations.

# Solid Walls vs. Cavity Walls



options for improving existing dwellings





# Prince's Foundation Summer School at Lincoln Cathedral



# Prince of Wales Traditional Building Craft Apprentices



- A seven month intensive residential programme in traditional building skills, focused on greening traditional buildings, and on building a work force dedicated to the making and reuse of beautiful, long-lived, simple and natural buildings.
- Four New Orleans residents participated in the course, two teachers from Delgado College, and two carpenters from the union. Three graduated as Prince of Wales Master Craftsmen.

# Greening Tradition: Two Prototype Wall Systems

---



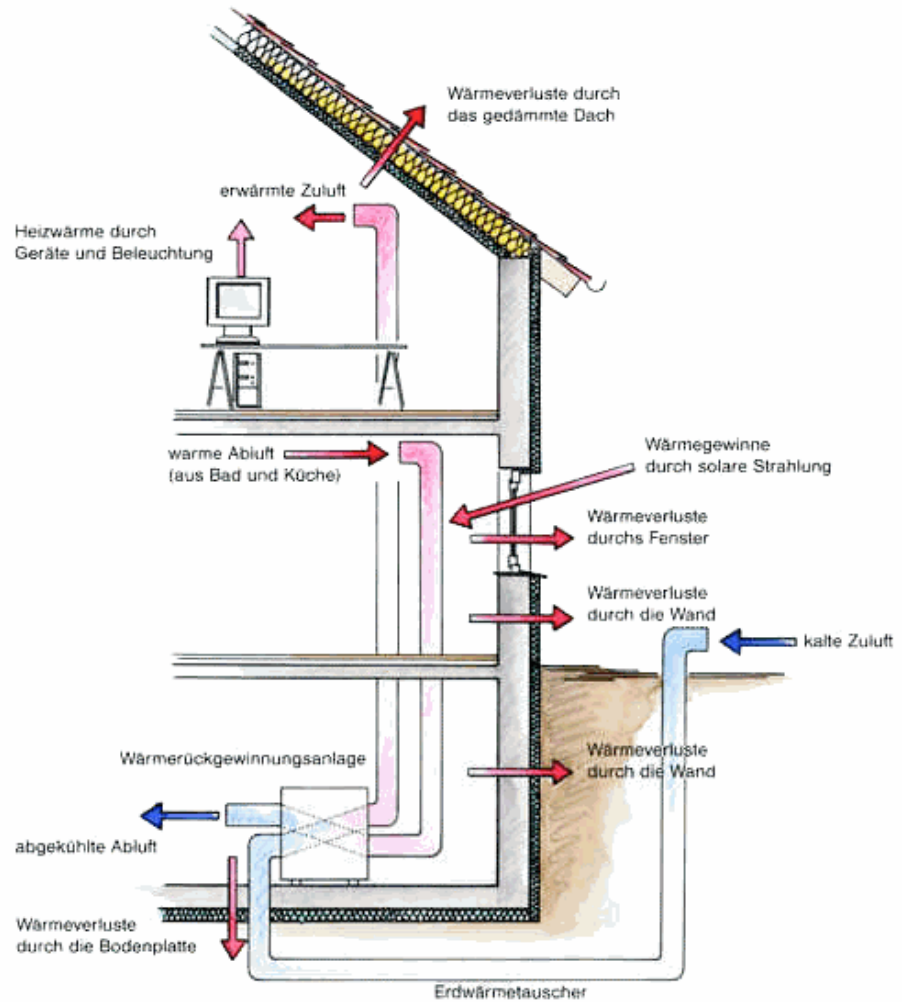
# Aerated Clay Block Prototype



# Hemcrete Wall



# The Alternative: Wall Section of “Passive House”



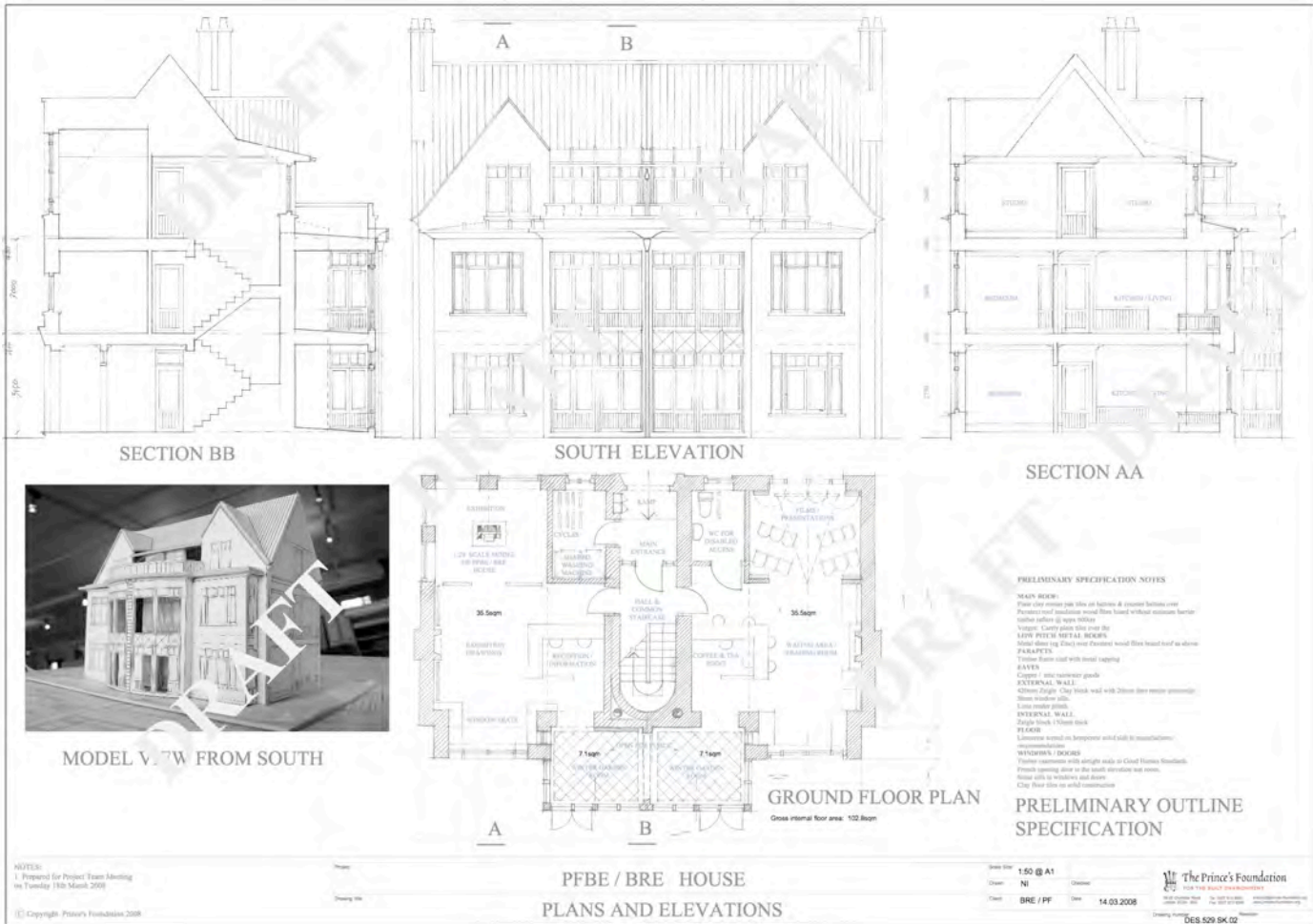
## Building Research Establishment “Innovation Park”

---



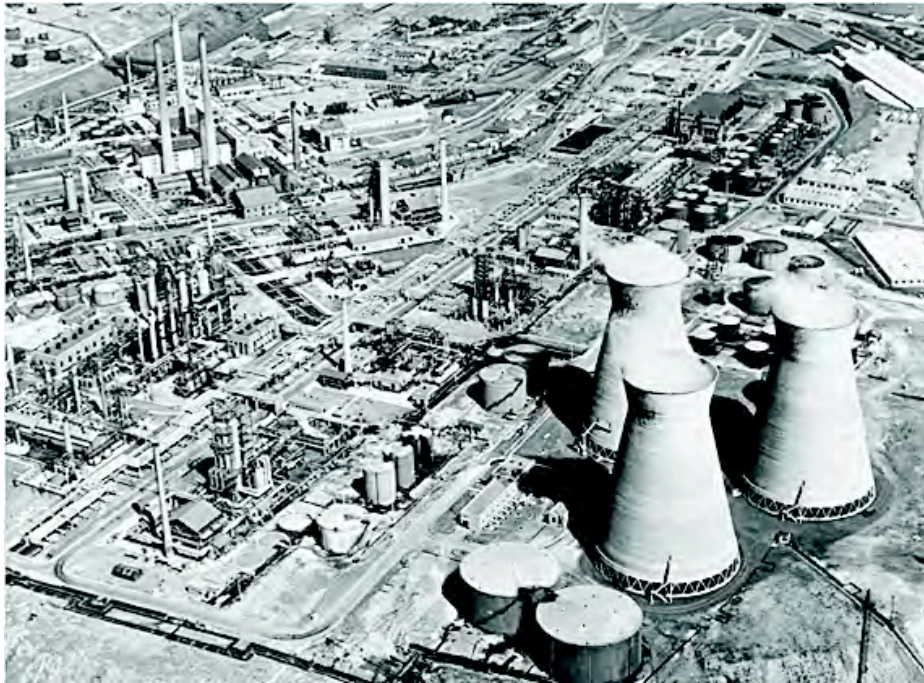
Prince's Foundation “Good Home” to be built here. Specification: aerated clay block and render, materials must come from the ground or be grown. Partner with BRE, Swan, NBM.

# BRE Innovation Park





# Application: Coed Darcy



Llandarcy Refinery, South Wales, 1970

## Coed Darcy Masterplan

ST.MODWEN



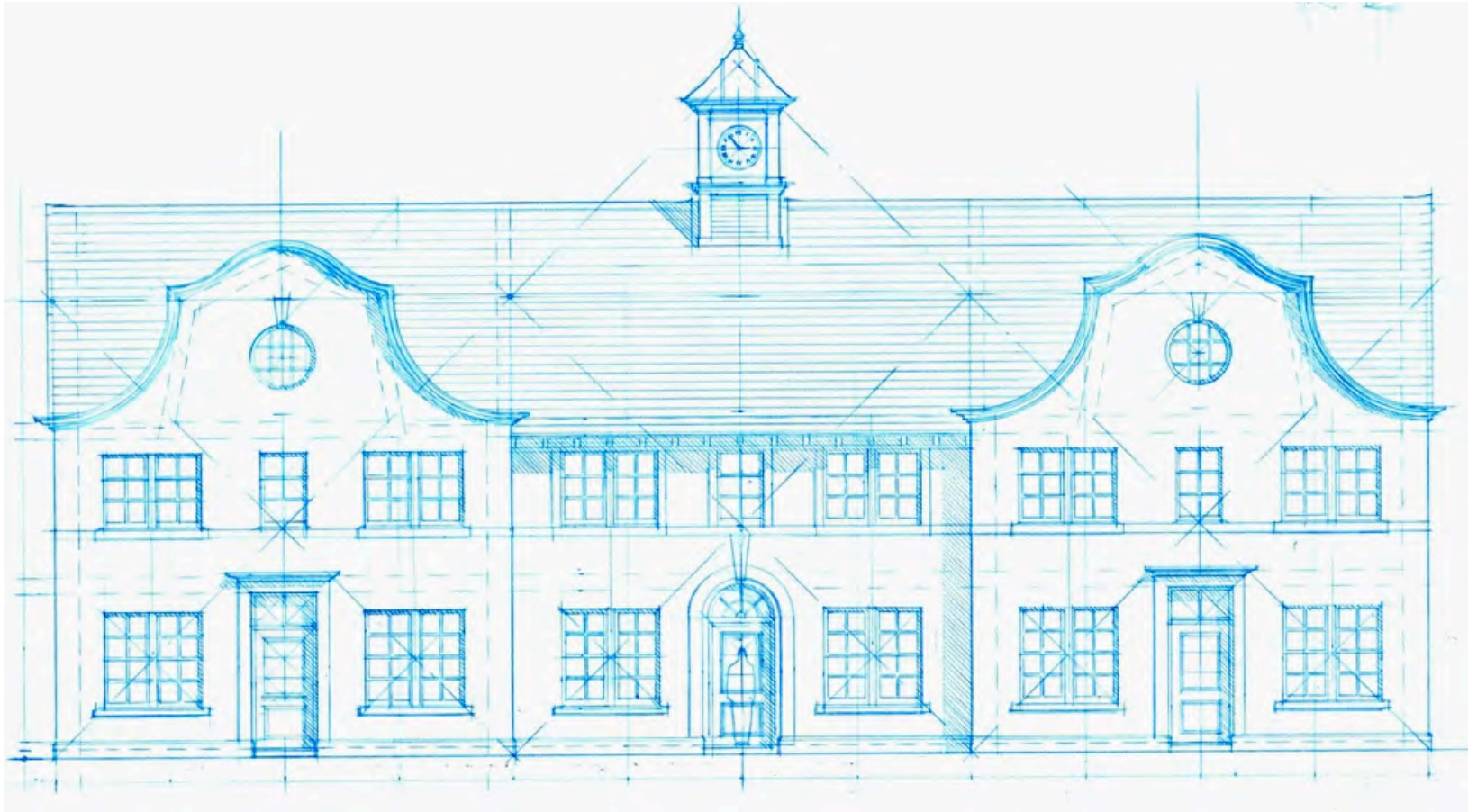
Coed Darcy Masterplan  
Summary of Workshop Layout  
Do not Scale (approx 1:2500 at A0)

nash  
partnership

January 2008  
7132 (SK) 011

# Application: Stamford

---



# Application: Ellon

DRAFT  
15 JANUARY 2008

## SCOTIA GEORGIAN



### Materials and Applications

The materials used in each region should be of a quality to match the Georgian style wherever possible. In a few instances it is noted that the materials should be of a different quality to that of the surrounding area. The materials should be of a quality to match the Georgian style wherever possible. In a few instances it is noted that the materials should be of a different quality to that of the surrounding area.

Timber: Wherever used, it should be of a quality to match the Georgian style wherever possible. In a few instances it is noted that the materials should be of a different quality to that of the surrounding area.

Roofing and Finishing: The materials used in each region should be of a quality to match the Georgian style wherever possible. In a few instances it is noted that the materials should be of a different quality to that of the surrounding area.



BLAIR HATFIELD BIRD



Master Plan and Pattern Book for Ellon, UDA and PFBE, 2007-8



