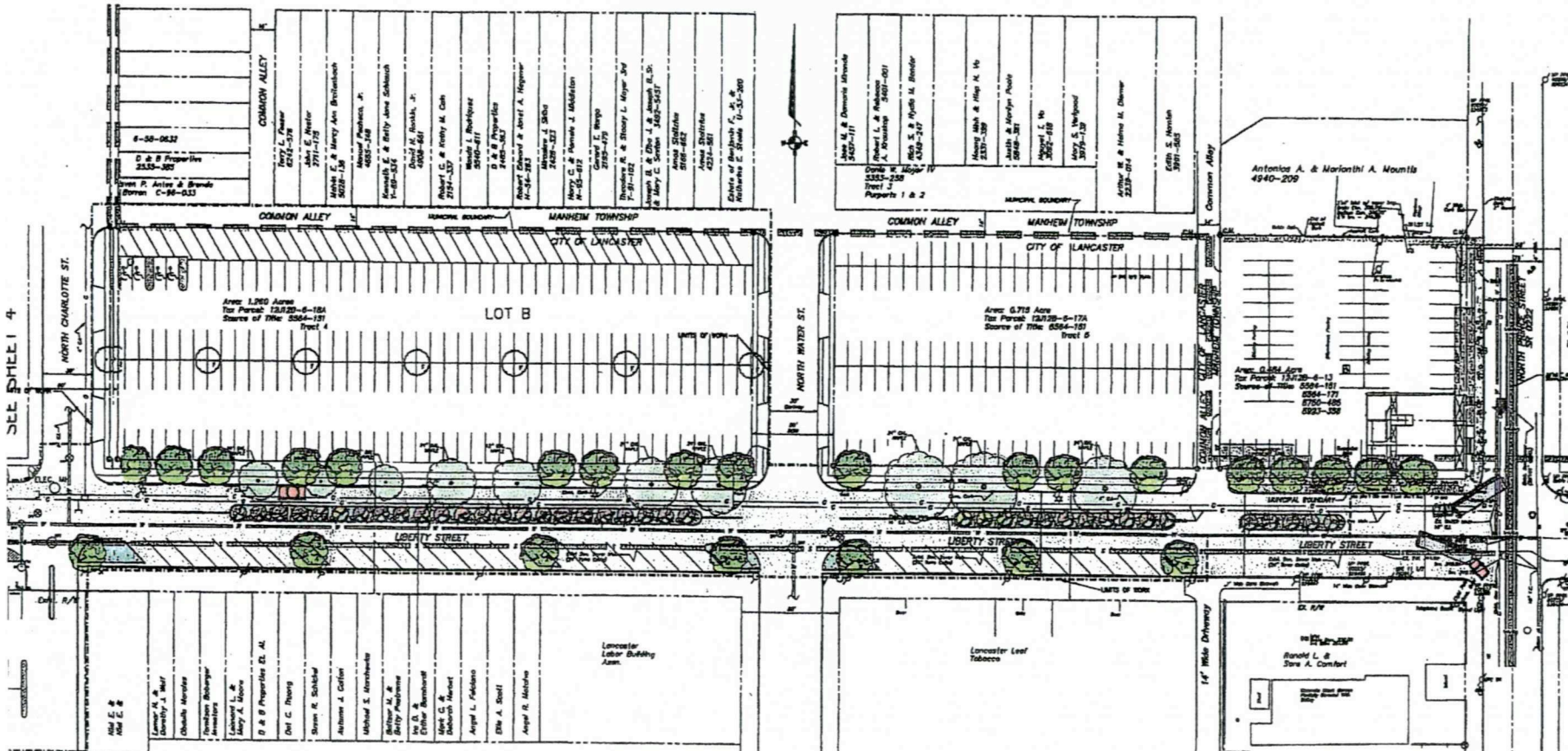








SEE SHEET 4



TREE LIST

KEY	SIZE	BASIC	SIZE
A	12	Acer rubrum "Scarlet Sentinel"	3" cal. Maple
B	8	Acer rubrum "Red Diamond"	3" cal.
C	4	Rosa blanda	3" cal.
D	4	Quercus bicolor	3" cal.
E	4	Quercus prinus	3" cal.
F	15	Quercus prinus	3" cal.
G	15	Quercus prinus	3" cal.
H	8	Quercus prinus	3" cal.
I	10	Quercus prinus	3" cal.
J	4	Quercus prinus	3" cal.
K	10	Quercus prinus	3" cal.
L	5	Quercus prinus	3" cal.
M	4	Quercus prinus	3" cal.
N	8	Quercus prinus	3" cal.

Legend



Project Manager: **Janette E. Prokop, R.L.A.**
 Project Engineer: **W. R. Smith, P.L.S.**
 Project Designer: **Mark D. Ayers, P.E.**

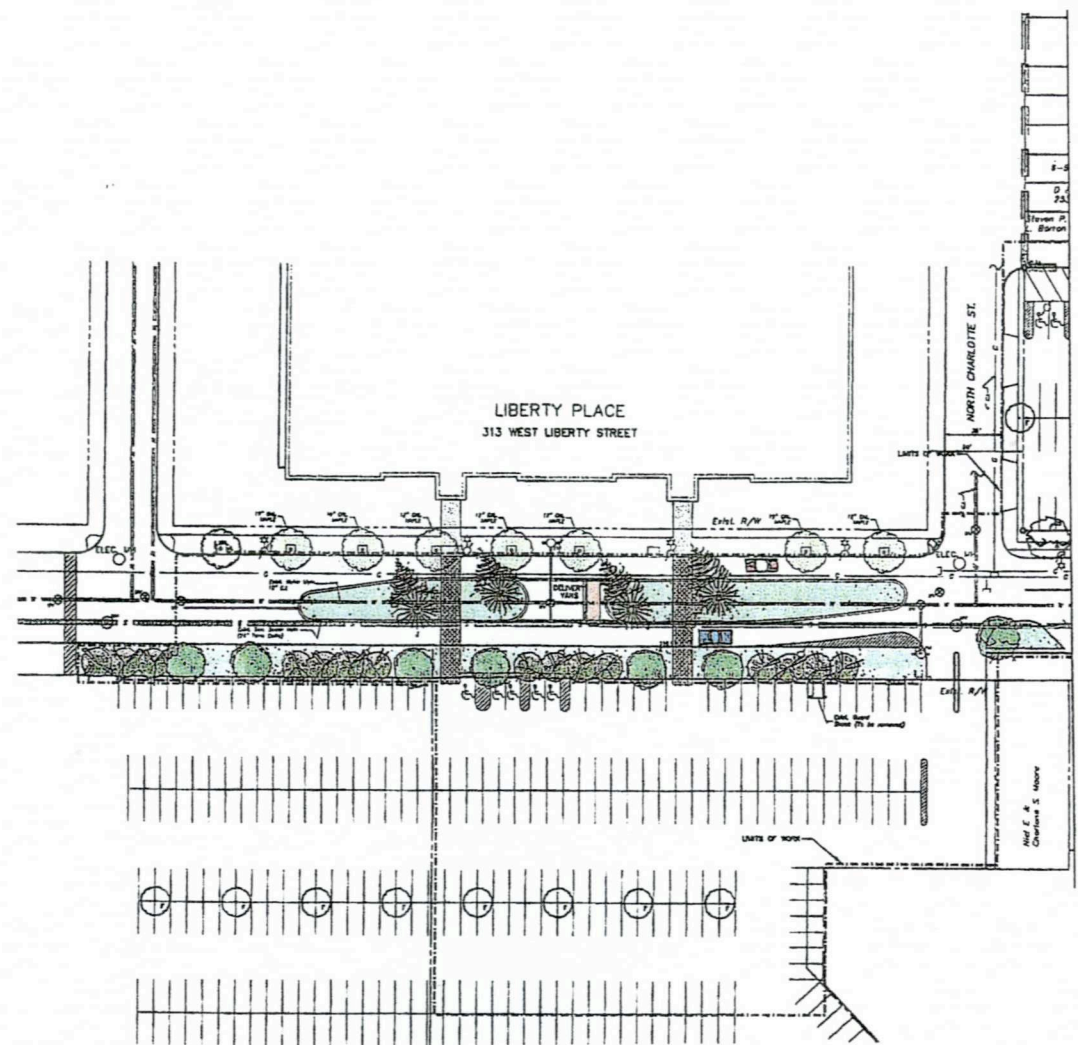
City of Lancaster - Lancaster County, PA

LIBERTY PLACE STREETScape

Scale: 1" = 30'

Date: **June 23, 2009**
 Sheet No: **533301**
 7 OF 8

- Legend**
- Existing Right-of-Way
 - Existing Property Line
 - Existing Center Line
 - Existing Sanitary Sewer Line
 - Existing Water Line
 - Existing Gas Line
 - Municipal Boundary Line
 - Existing Manhole
 - Existing Gas Valve
 - Existing Water Valve
 - Existing Utility/Light Pole
 - Existing Utility Pole
 - Existing Fire Hydrant
 - Cast Concrete Monument
 - Existing Tree
 - Proposed Tree



TREE LIST

KEY	QTY	NAMES	SIZE
A	12	Acer rubrum "Scarlet Sentinel"	3" cal.
		Maple	
B	8	Acer rubrum "Red Sunset"	3" cal.
		Red Sunset Maple	
C	4	Cornus florida	3" cal.
		Flowering Dogwood	
D	4	Cornus florida	3" cal.
		Kousa Dogwood	
E	4	Quercus prinus "Water King"	3" cal.
		Water King Hawthorn	
F	15	Quercus prinus "Shademaster"	3" cal.
		Shademaster Honeylocust	
G	13	Malus "David"	3" cal.
		David Malus	
H	8	Malus "Red Jewel"	3" cal.
		Red Jewel Malus	
I	10	Malus "Sergeant"	3" cal.
		Sergeant Malus	
J	4	Prunus americana	6" h.L.
		Serbian Spruce	
K	10	Prunus americana "Columbian"	3" cal.
		Columbian Sargent Cherry	
L	5	Quercus rubra	3" cal.
		Red Oak	
M	4	Ulmus "Pioneer"	3" cal.
		Pioneer Elm	
N	8	Zelkova serrata "Green View"	3" cal.
		Greenview Zelkova	

LIBERTY PLACE STREETSCAPE

DATE: 06/23/2011 10:58 AM
 PROJECT NO: 5333
 SHEET NO: 8 OF 8

DESIGNED BY: W. R. SELL, P.E.
 PROJECT ENGINEER

CHECKED BY: A. J. HARRIS, P.E.
 PROJECT ENGINEER

DATE: 06/23/2011 10:58 AM























