



# GHA Introduction 2007

1. Introduction
2. Governance & structure
3. Membership
4. Current programmes
5. Development plans

*Corporate Sponsors 2007:*



ReedSmith  
Richards Butler

The business of relationships.

# Introduction

**The Good Homes Alliance is a group of housing developers, building professionals and other industry supporters whose aim is to build and promote sustainable homes and communities and to transform the whole of UK house building into a sustainable endeavour.**

**The GHA was launched on 28<sup>th</sup> February 2007 as a member-based Community Interest Company (CIC)**

# GHA Standards

**All Developer Members have signed up to meet the GHA Code requirements on at least 51% of new projects:**

- A reduction in CO2 emissions from new homes by at least 70% compared to the average use in UK housing stock, according to building type, in 2003.
- EcoHomes excellent
- Post occupation monitoring and assessment
- All other homes must meet at least the EcoHomes Very Good standard.

**All GHA Members sign up to the GHA Charter, which includes clear guidelines for social and environmental performance, such as occupant health and well-being and community sustainability.**



# GHA Activities

**The GHA has four main areas of work:**

- 1. Building – we provide technical and other support to help our Developer Members to deliver more sustainable homes.**
- 2. Education – we organise events and provide a supportive environment for the exchange of knowledge and experience**
- 3. Lobbying – we engage with Government, agencies and landowners to promote more sustainable housebuilding through legislation and specification**
- 4. Promotion – we will highlight the benefits of sustainable homes to the media and the general public**

# GHA Governance

## Board Members

<b>DEVELOPER MEMBERS</b>  50%	<b>NON-DEVELOPER MEMBERS</b>  50%	
	<b>INDEPENDENT</b>  25%	<b>CHARITIES</b>  25%



# GHA Board

**Pete Halsall**  
BioRegional Quintain

**Jon Bootland**  
SD Foundation

**Jonathan Kingerlee**  
Kingerlee Homes

**Neil May**  
Chairman  
Natural Building  
Technologies

**Hank Dittmar**  
Prince's Foundation

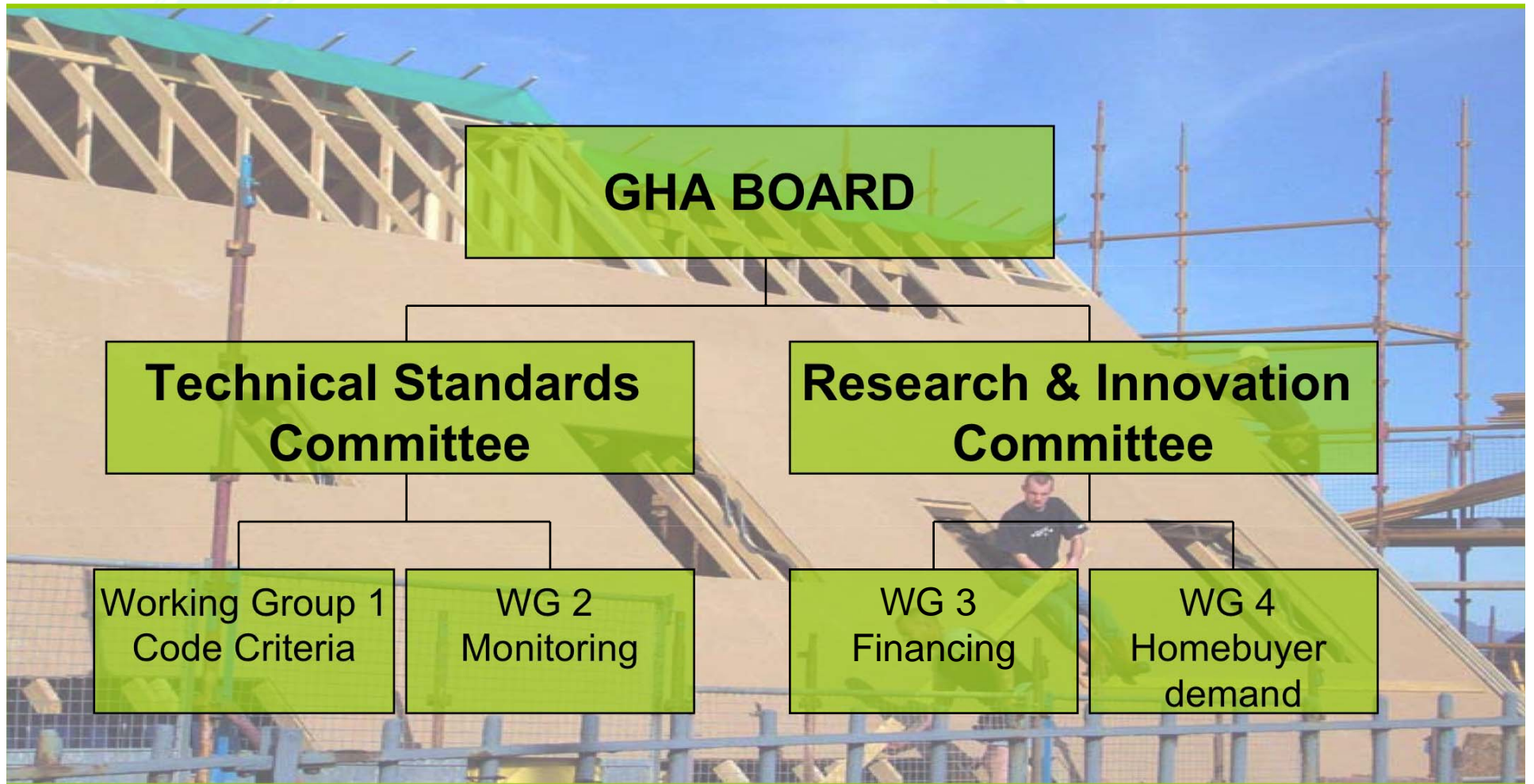
**Kim Slowe**  
Cornhill Estates

**Bob Lowe**  
UCL (Bartlett)

**Mark Swan**  
Swan Country Homes

**Ben Pentreath**  
Working Group

# GHA structure



# GHA team

**Jon Bootland**  
**Director**



**Jonathan Essex**  
***Education***



**Suzy Edwards**  
***Development***



**Alistair McMahon**  
***Compliance***



**Gill Erskine & Lilja Katanka**  
***Coordination***



# Founder Members

Working Group  
ARCHITECTURE DESIGN PLANNING

  
CORNHILL ESTATES LTD

BioRegional



QUINTAIN  
ESTATES AND DEVELOPMENT PLC

SC+H  
Building a sustainable future



The Prince's Foundation  
FOR THE BUILT ENVIRONMENT

 NBT  
Natural Building Technologies

  
KINGERLEE  
HOMES

 Sustainable  
Development  
Foundation

 UCL

# Activities and Membership



## Summary at September 2007

*Corporate Sponsors 2007:*



ReedSmith  
Richards Butler

The business of relationships.

# Sponsors

## Corporate Sponsors



**ReedSmith**  
**Richards Butler**

The business of relationships.

## Event Sponsors



**gleeds**<sup>G</sup>



# Current Developer Members

- **BioRegional Quintain**
- **Chalkhill Contemporary Homes**
- **Cornhill Estates**
- **ECOS (formerly South West Eco Homes)**
- **Kingerlee Homes**
- **Living Villages**
- **Minscombe Homes**
- **NGM Sustainable Developments**
- **Olive Green Developments**
- **Swan Country Homes**



# Current Non-Developer Members

<b>Burdens Environmental</b>	<b>Hendy SD</b>	<b>SD Foundation</b>
<b>Centre for Sustainable Energy</b>	<b>Holden and Partners LLP</b>	<b>Second Nature UK</b>
<b>Connections in Design</b>	<b>Impetus Consulting</b>	<b>Tees Valley Regeneration</b>
<b>Edward Cullinan Architects</b>	<b>Jewell and Co Architects Ltd</b>	<b>TJ Crump Oakwrights</b>
<b>Energy for Sustainable Development (ESD)</b>	<b>Lime Technology</b>	<b>Triodos Bank</b>
<b>ESHA Architects</b>	<b>Jon Broome Architects</b>	<b>UCL, The Bartlett</b>
<b>Ferrier Pearce Creative</b>	<b>Natural Building Technologies</b>	<b>Under The Sky</b>
<b>Geraghty Taylor</b>	<b>PDM Consultants</b>	<b>Upstream</b>
<b>Green Moves</b>	<b>Prince's Foundation</b>	<b>Working Group</b>
<b>Gusto Finance</b>	<b>SC2 Consultants</b>	<b>Venner Lucas</b>

# Projects for 2007

## 1. Low-energy performance

- Knowledge Transfer Partnership with UCL (the Bartlett)

## 2. Post-construction monitoring

- possible partnership with EST

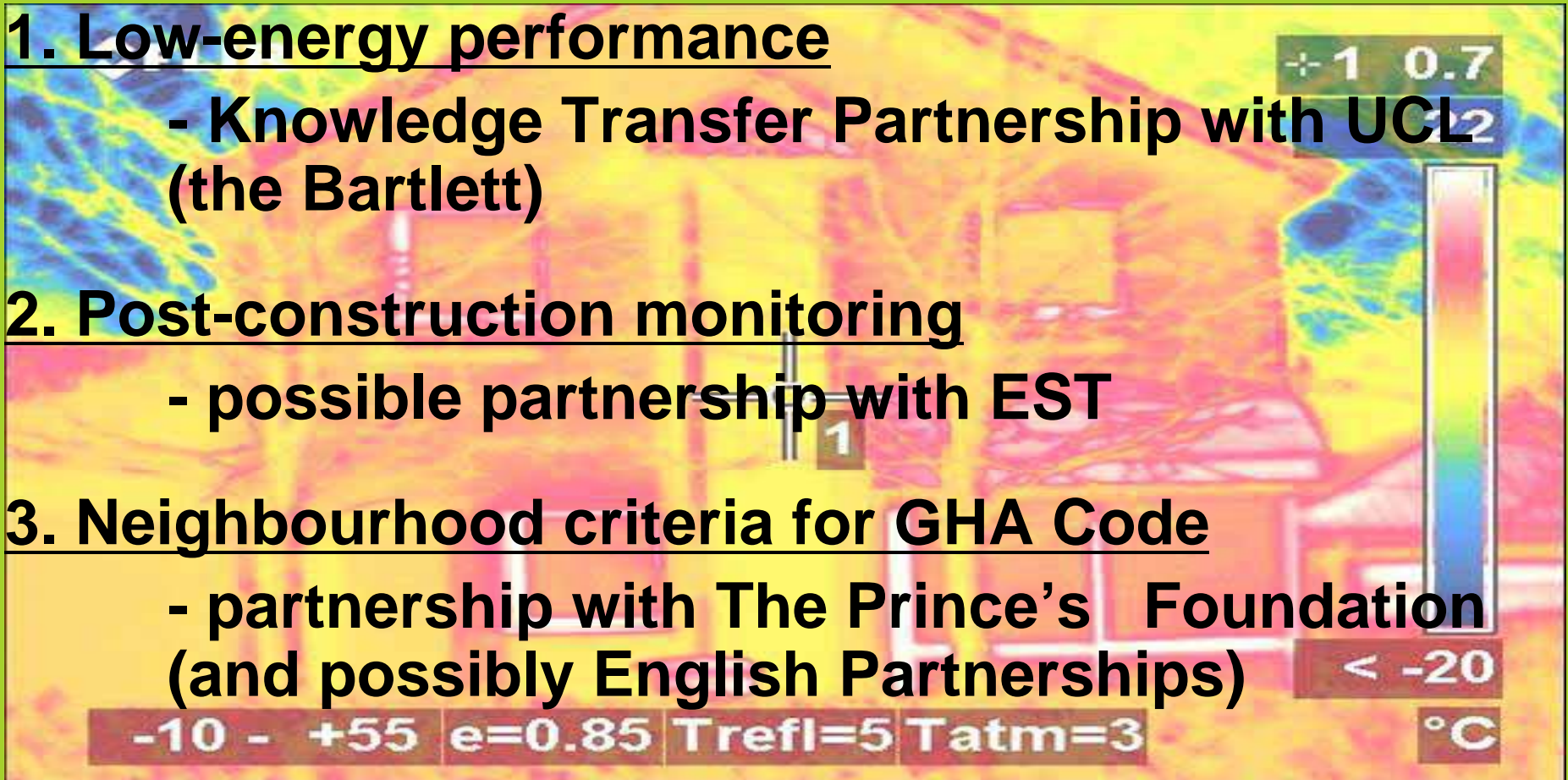
## 3. Neighbourhood criteria for GHA Code

- partnership with The Prince's Foundation (and possibly English Partnerships)

-10 - +55 e=0.85 Trefl=5 Tatm=3

< -20

°C



# Possible opportunities for 2008

- 1. Regional GHA activities**
  - 2. Sustainable Homes Knowledge Base**
  - 3. Research into health & well-being of occupants**
  - 4. Survey of buyer demand**
  - 5. Quality mark scheme**
  - 6. Local renewable energy fund**
  - 7. Discounted insurance products**
  - 8. Sustainable product purchasing**
- 

**[www.goodhomes.org.uk](http://www.goodhomes.org.uk)**