

LEED® for Neighborhood Development: Progress & Pilot

CNU XV
May 2007



Overview



What is LEED for Neighborhood Development?

- A LEED rating system being developed through a partnership with
 - Natural Resources Defense Council (Smart Growth)
 - Congress for the New Urbanism



- A rating system that combines elements of smart growth, urbanism, and green building



Why do we need LEED for Neighborhood Development?



- Nationally, we are developing land twice as fast as population is growing
- Vehicle use in America has more than doubled since 1970 (offsetting all fuel economy gains)
- Most development does not happen one building at a time

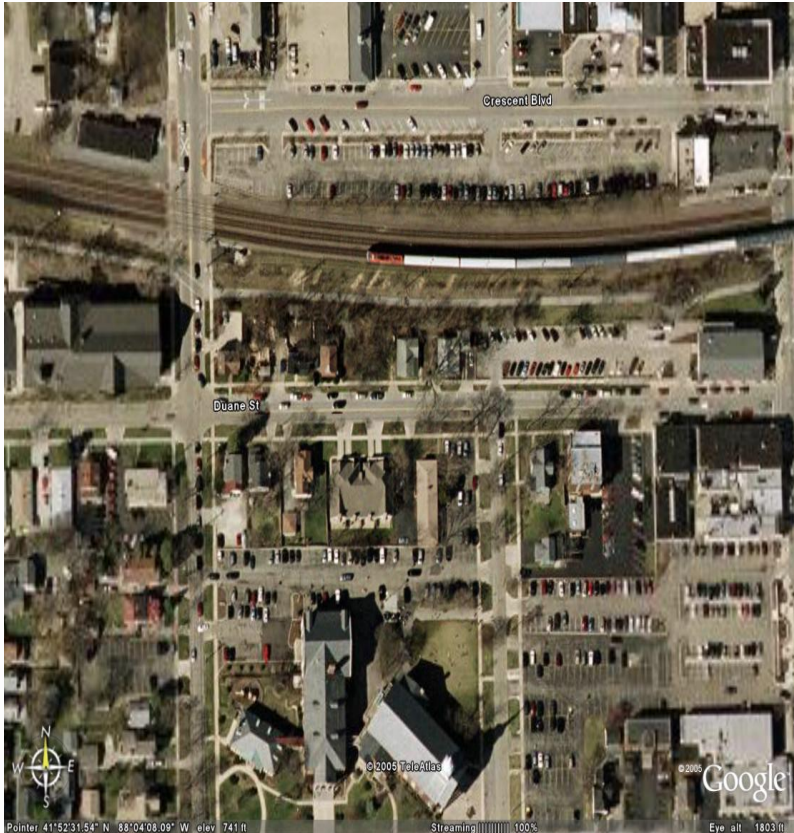


What types of projects can use LEED for Neighborhood Development?

- Whole, fractions, or multiple neighborhoods
- Small and large
- Infill and appropriate development of undeveloped land
- Residential, commercial, and mixed use



Who is LEED for Neighborhood Development for?



- Primary market of who will be certified: developers
- Also important: planners



Categories of prerequisites and credits...

Smart Location & Linkage



Neighborhood Pattern & Design



Green Construction & Technology

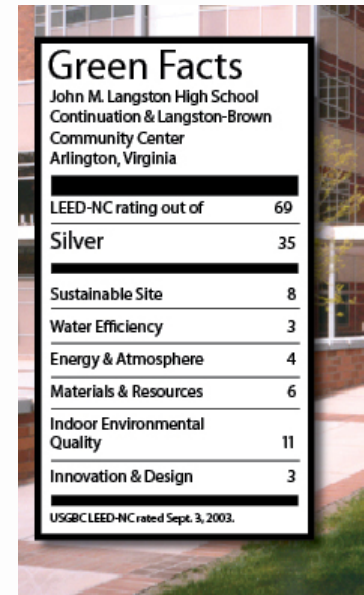


3-Stage Certification Process



3-Stage Certification Process

- 1) Pre-Review of Proposed Plan
(optional, pre-entitlement, gets you a letter)
- 2) Certification of Plan
(post-entitlement, gets you a certificate)
- 3) Certification of Completed Neighborhood Development
(post-construction, gets you a plaque)



Green Facts	
John M. Langston High School Continuation & Langston-Brown Community Center Arlington, Virginia	
LEED-NC rating out of	69
Silver	35
Sustainable Site	8
Water Efficiency	3
Energy & Atmosphere	4
Materials & Resources	6
Indoor Environmental Quality	11
Innovation & Design	3
USGBC LEED-NC rated Sept. 3, 2003.	



What is the current status of LEED for Neighborhood Development?



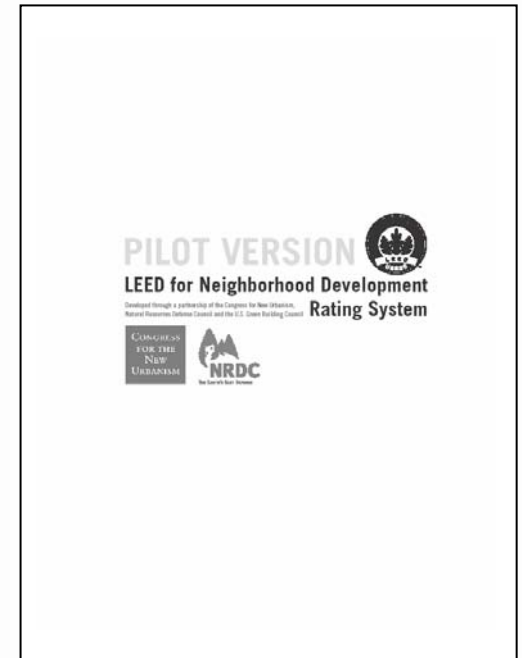
- Nearly 3 years of committee consensus development and one comment period are over...
- Starting pilot!



Pilot Program

Call for pilots was open February 6 – April 6
(yes, it's over for now...sorry)

- Cap of 120 projects
- Received 371 applications in response
- Selection process underway
- Expect the selection announcement in late
May



What are we looking for in pilot projects?

- Great projects
- Projects that can bear with us as we work out the bugs



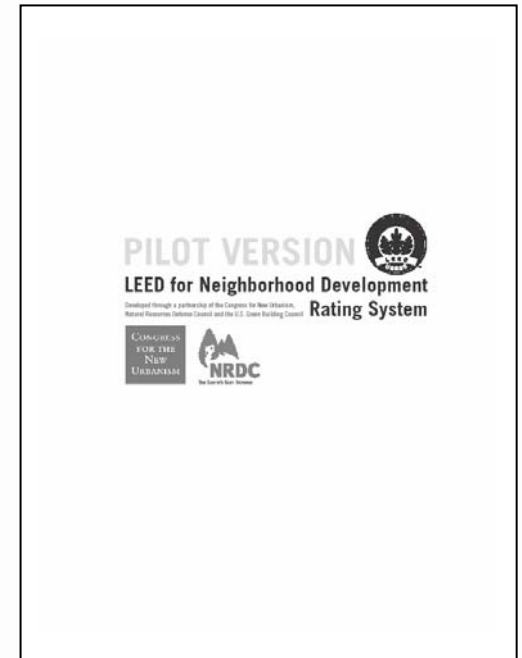
- Variety; e.g. size, uses, geography, stage of development, other...



Pilot Program

Selected projects will have the opportunity to register, and will then receive additional resources to help them submit for certification:

- Access to the pilot project webpage
- Pilot reference guide
- Submittal templates
- Monthly/bi-monthly conference calls with staff and review consultants for general Q&A



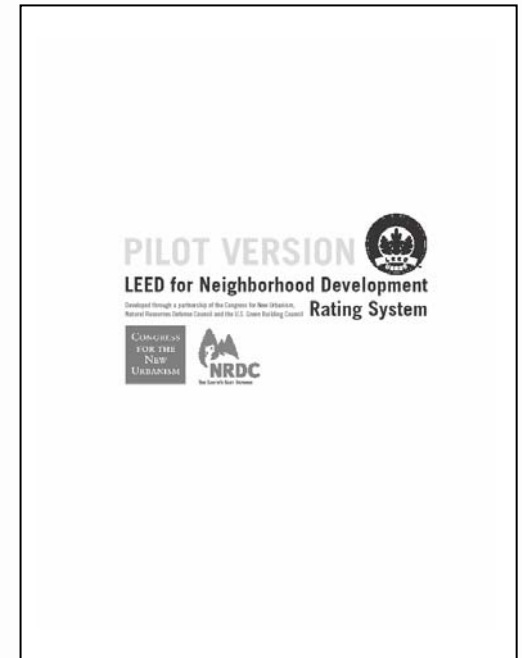
Pilot Program

If NOT selected (or if you missed the deadline):

- You can still certify in the post-pilot program.

But wait! There's probably more!

- Sign up and stay tuned to the corresponding committee.



What Next?

Currently: Begin pilot

- Pilot selection (late May)

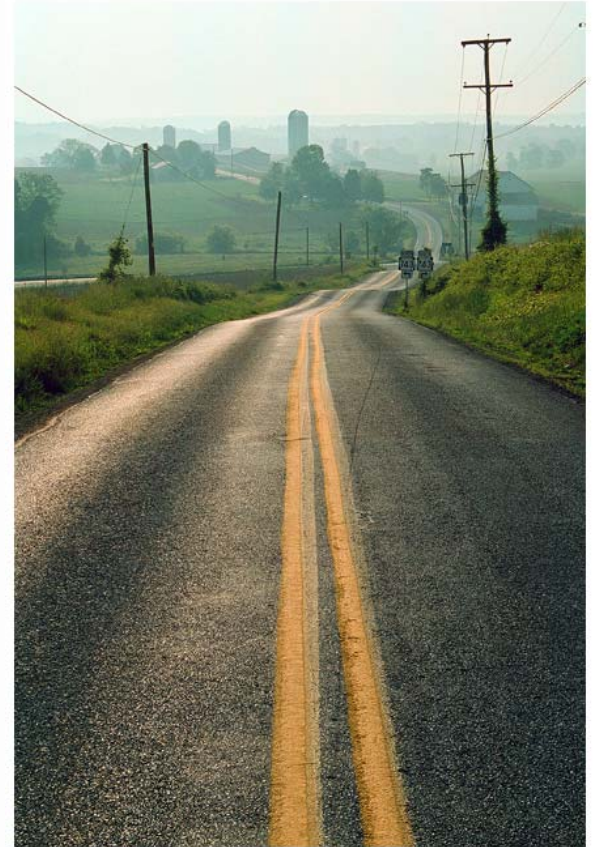
2007: Pilot runs

- Pilot projects submit for certification
- Ongoing feedback loop

2008 – 2009:

Transition to full program

- Post-pilot revisions
- Public comment periods
- Ballot approval



Top 10 things we are hoping to learn during pilot

- 1) How restrictive are the prerequisites? Are there any prerequisites we omitted?
- 2) Are the levels of certification appropriate?
- 3) Are there ways of streamlining the required submittals?
- 4) Does the 3-stage certification process achieve its purposes?
- 5) How does street grid density and/or built density do as an overall indicator of “smart location” or a proxy metric for place on the transect?



Top 10 things we are hoping to learn during pilot

- 6) Are there more nuanced ways to address wetlands, habitat, or floodplains?
- 7) Can “new towns” use Options 4 & 5 of SLL Prereq 1?
- 8) Does the stormwater credit promote the right actions, and are the thresholds appropriate?
- 9) How are green buildings and infrastructure best incorporated into the rating system?
- 10) Should we have a max/min size, and if so, what should it be?



Questions for you...



- What would be the things you would like us to focus on learning during pilot?
- If you were thinking of submitting a project during the call for pilot applications but didn't, why didn't you?
- What can we do for non-pilots in the meantime?
- How should we address the likelihood of public adoptions?

To learn more...

- Visit the LEED for Neighborhood Development page of the USGBC website to download the pilot rating system or join the corresponding committee:

www.usgbc.org/leed/nd

- Questions can be sent to nd@committees.usgbc.org



Rating System Issues of Interest



- 1a) Urban Waterfronts
- 1b) Human-made Wetlands
- 2) Stormwater
- 3) Smart Location Prereq
(Options 4 & 5)

