

CONGRESS
FOR THE
NEW
URBANISM



NASA



AN INCONVENIENT TRUTH NOW AVAILABLE ON DVD
BUY THE DVD

we can solve the climate crisis.

takepart^o



Hurricane Katrina
August 26, 2005

"What changed in the US with HURRICANE KATRINA was a feeling that we have entered a PERIOD OF CONSEQUENCES..."
Al Gore

an inconvenient truth

NOW AVAILABLE ON DVD

DOWNLOAD THE FREE COMPANION EDUCATIONAL GUIDE

ABOUT THE FILM

ABOUT THE DVD

THE SCIENCE

TAKE ACTION

DOWNLOADS

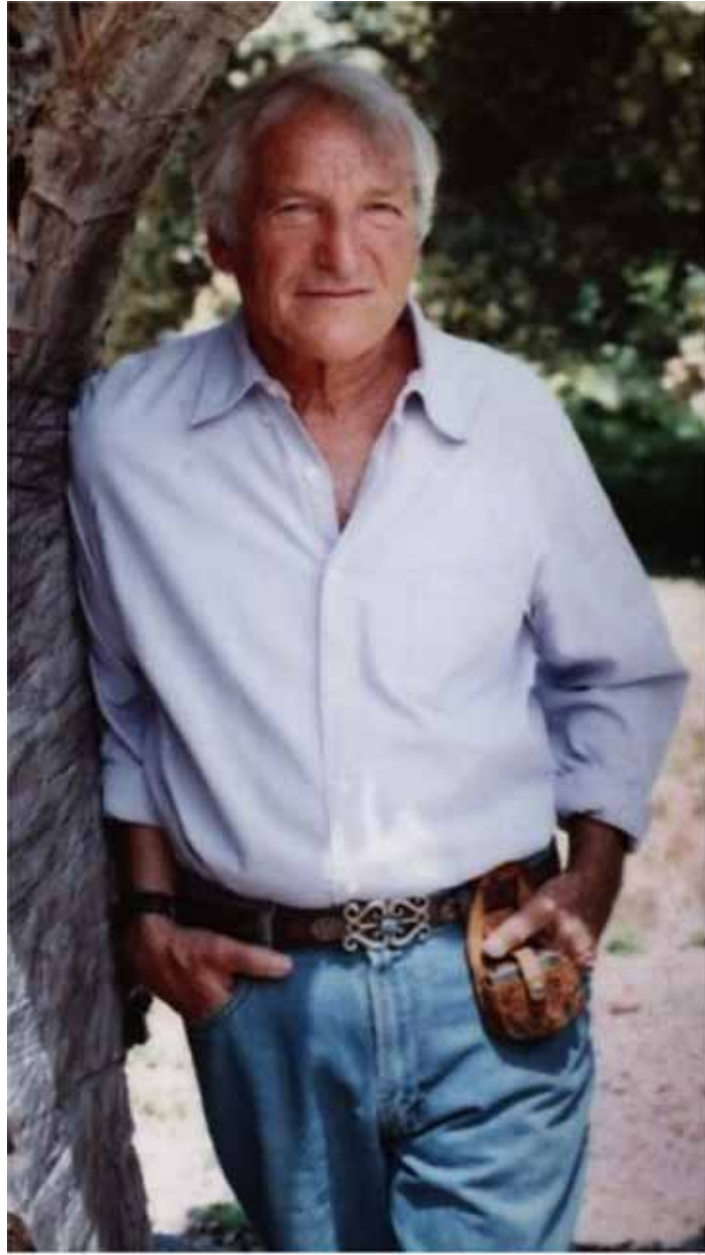
WATCH THE TRAILER

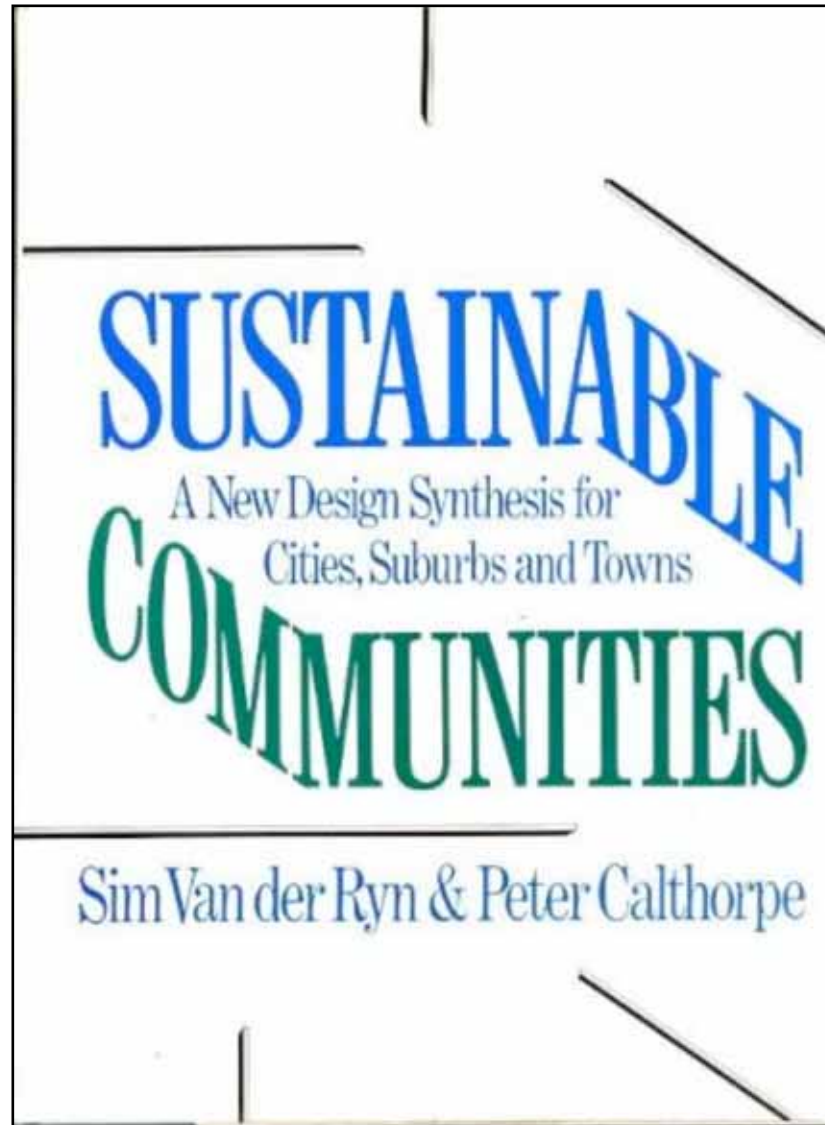


BUY THE DVD →

Enter E-Mail Address

SUBMIT





1986

a
convenient
remedy



CONGRESS
FOR THE
NEW
URBANISM























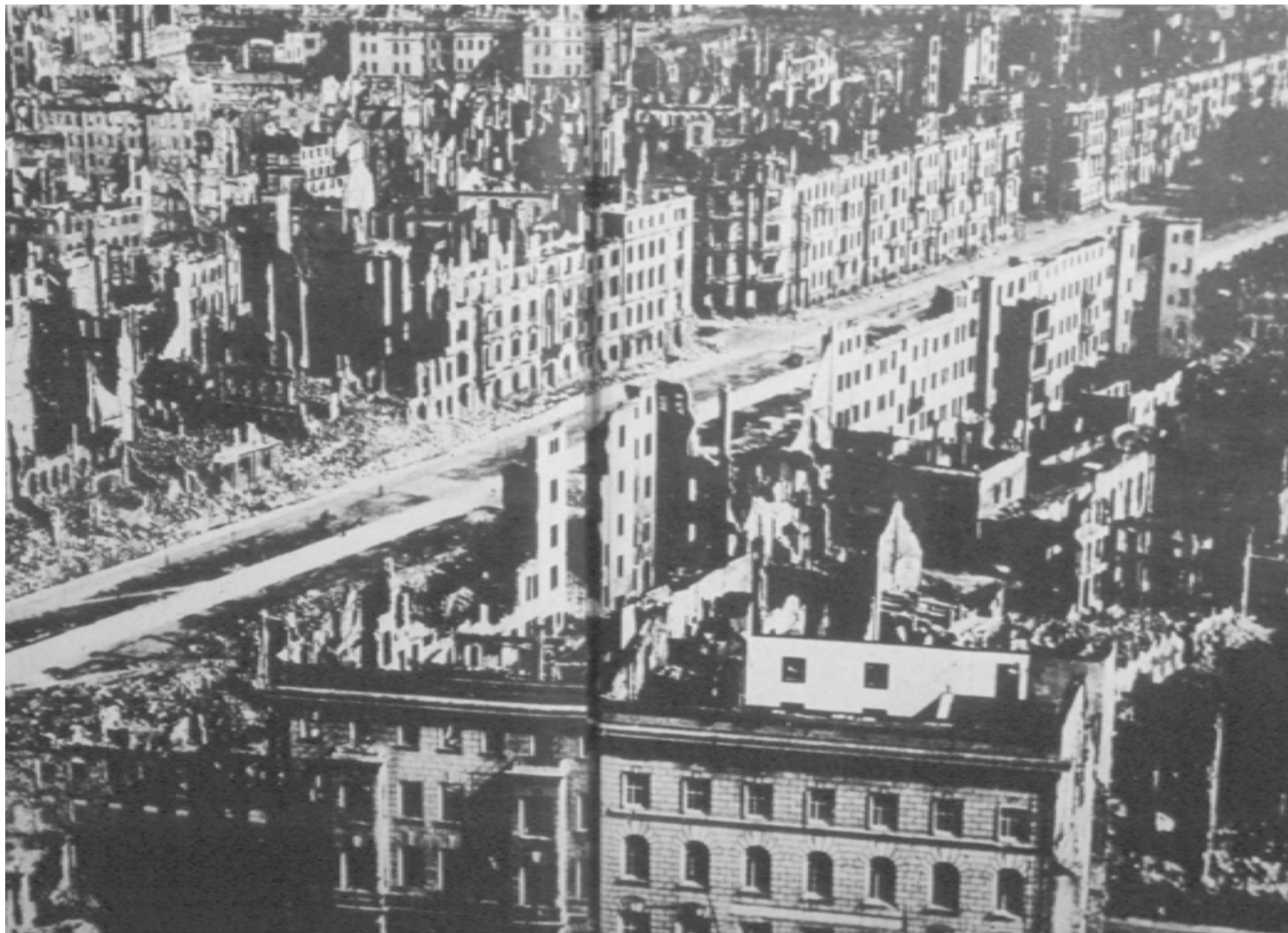




















COPYRIGHT © 2004 WAYNE STATE UNIVERSITY





















NORMAN BEL GEDDES















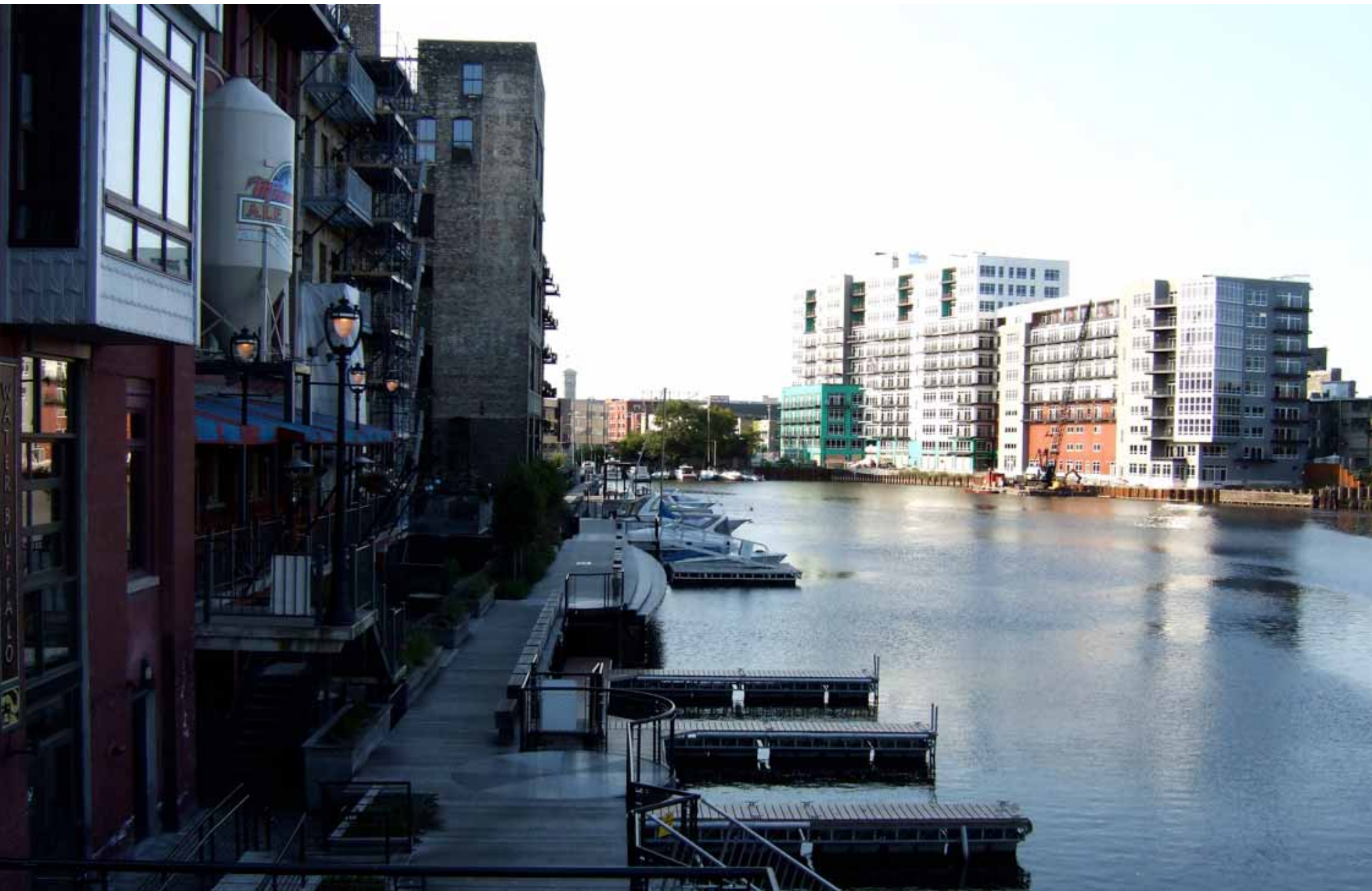












Riverfront Parkway Chattanooga Before



Riverfront Parkway Looking From Walnut Street Bridge to Market Street
dge



















© www.TerryDivyak.com











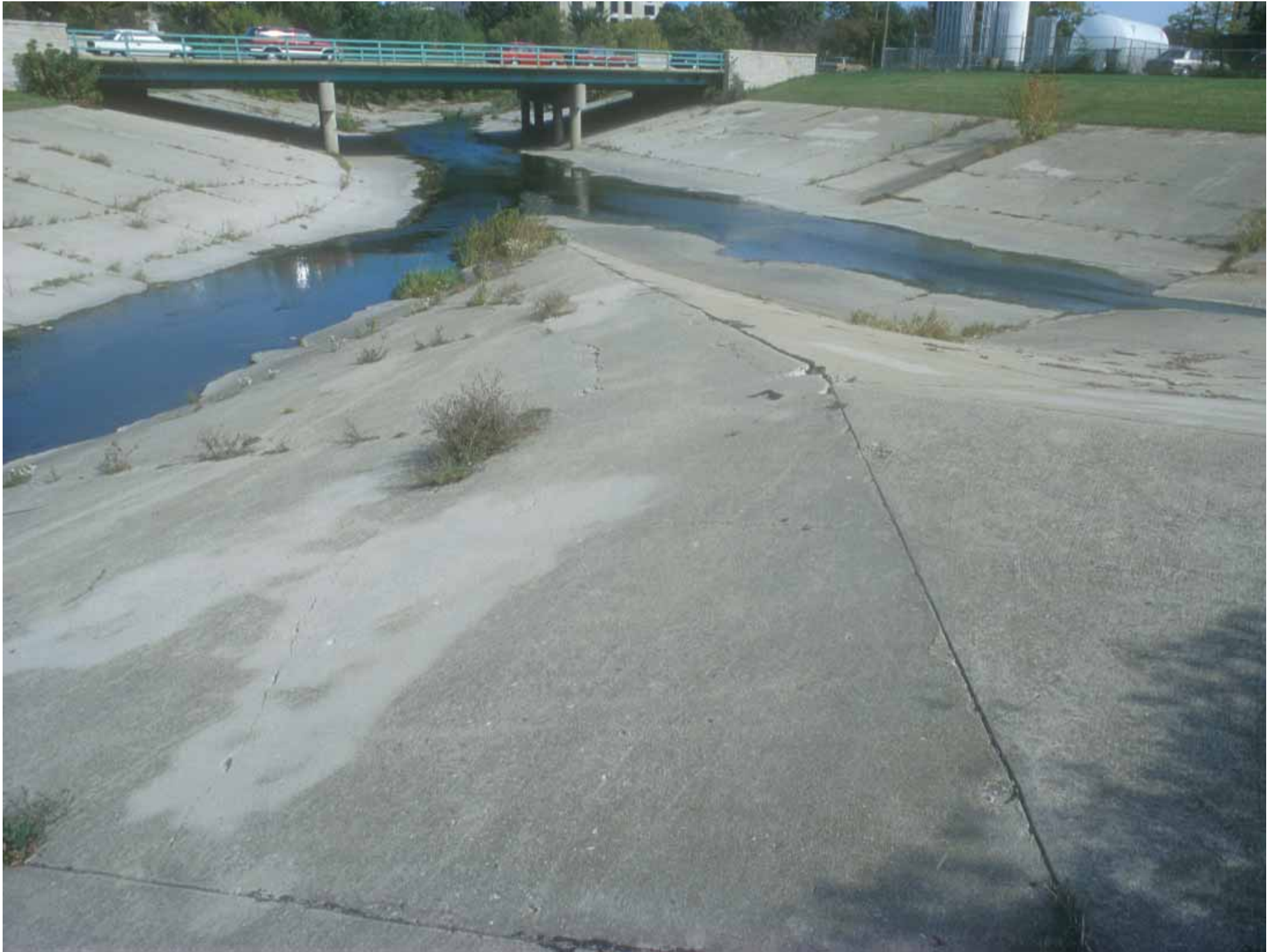














Well-planned highway systems enhance safety and traffic flow.

Wisconsin Dept. of Transportation

In State of
and **MARYLAND**
States of America
established as the
OVERNMENT,
Year
CC.

Dependent height of the
Plan Street above the city
to the level of the
F. 11th
1857



Lat. Capitol. 38.53. N.
Long. 0. 0.

URGE TOWN.

W. VIRGINIA WITHIN THE TERRITORY OF CO.

POTOMAK RIVER.

EASTERN BRANCH.
LAND WITHIN THE TERRITORY OF CO.

utions
of the Plan.

*For the different Editions
appears in lines of different
and down, with fine and
advantageous ground, in
exclusive property, and the
with improvements in other cases
under full for
years of direct construction have
more the separate and more distant
equal, and to preserve through the whole
of the same line. Attention has been
of their leading direction from the main to
r progress and improvement
South side, constructed by others remaining*

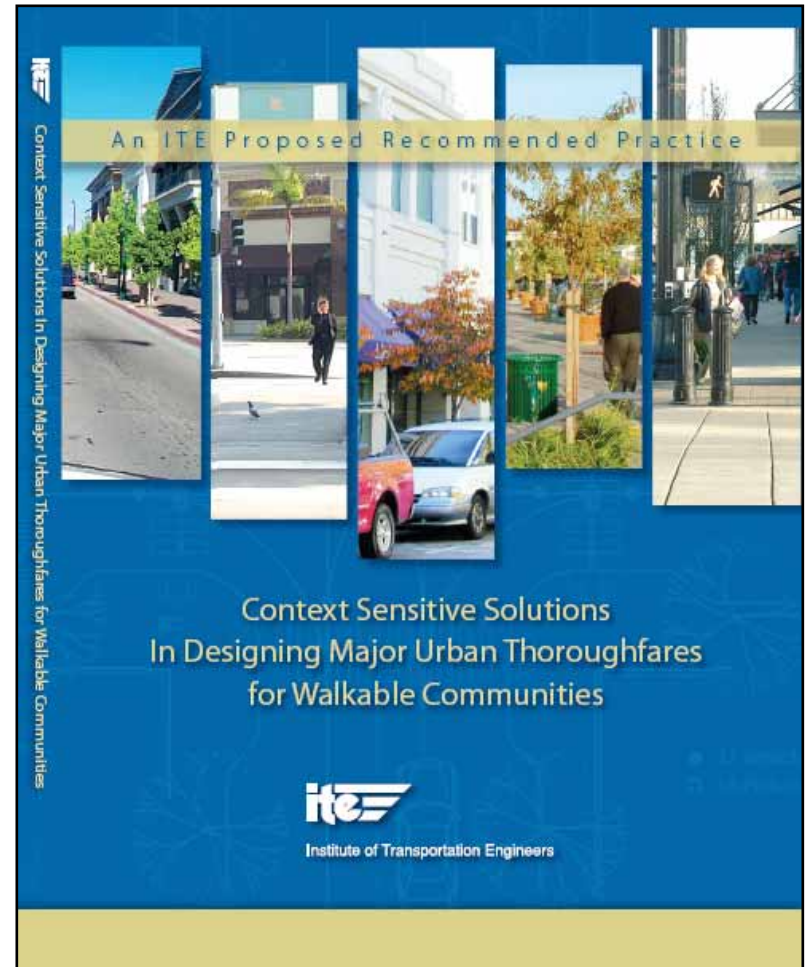
Breadth of the Streets.

THE grand Avenue, and each street as laid out



Context Sensitive Solutions in Designing Major Urban Thoroughfares for Walkable Communities

An ITE Proposed
Recommended Practice

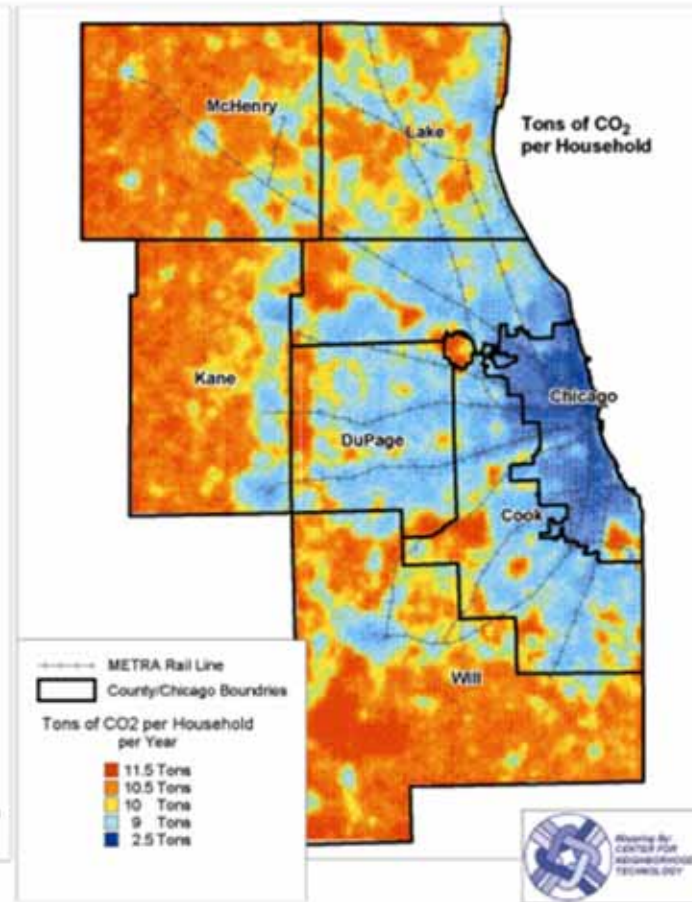
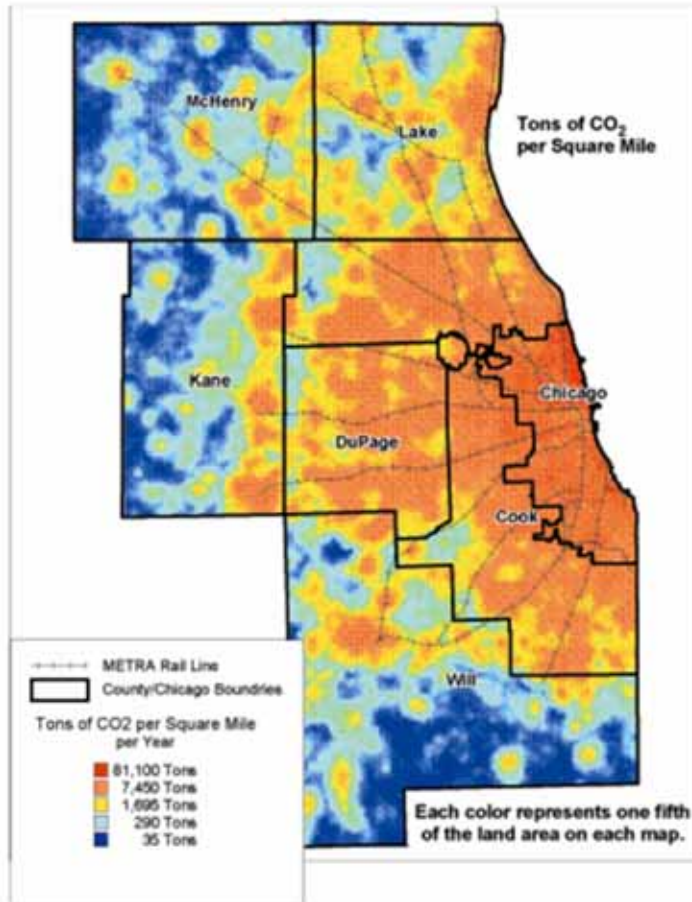


Two Views of Cities and CO₂

CO₂ Generated by Automobiles in the Chicago Region per Year

Traditional View:
Cities produce large amounts of GHGs.

Emerging View:
City dwellers produce relatively low amounts of GHGs.



Neighborhood Fuel Economy Estimates

Driving Days
Per Tank

54

LoDo
neighborhood,
Denver

Based on a 15
gallon tank and 25
mpg fuel efficiency

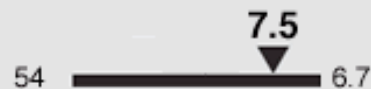
**Estimated
Annual Fuel Cost**

\$1082

based on 25 mpg-rated
vehicle and \$4.20/gallon
gasoline

Regional average: **\$3066**

Relative Fuel Economy



This neighborhood compared to
neighborhoods in this region.

Driving Days Per
Tank

7.5

Average **regional**
average

**Your actual
mileage will vary**

based on your
commuting patterns
and use of transit,
bicycles and walking
for some daily trips



Read more about neighborhood fuel efficiency at cnu.org/locationefficiency



The U.S. will need more than 50 million new housing units by 2037 to shelter a growing population, yet leading demographer Arthur C. Nelson of Virginia Tech University says the country is overbuilt with homes in large-lot subdivisions.



#1 Risk Factor





We can meet the need with livable, low-carbon neighborhoods.



THE NEW URBANISM

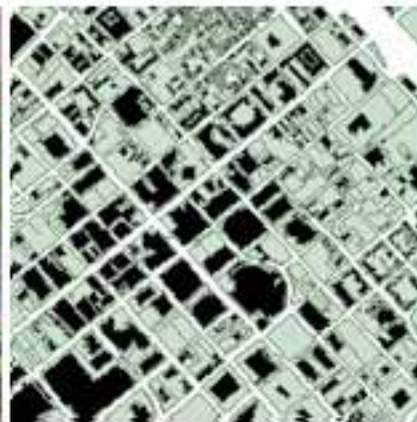
From Belmar to Stapleton,
Denver features real life examples
of new urbanism in walkable,
bikeable action. Come to CNU 17
to learn how to build sustainable
communities.

CNU 17



EXPERIENCING THE NEW URBANISM:
THE CONVENIENT REMEDY
JUNE 10-13, 2009
DENVER, COLORADO

CONGRESS
FOR THE
NEW
URBANISM



TRANSPORT
SUMMIT 2008

FOCUS ON NETWORKS

CHARLOTTE, NC
NOVEMBER 6-8