

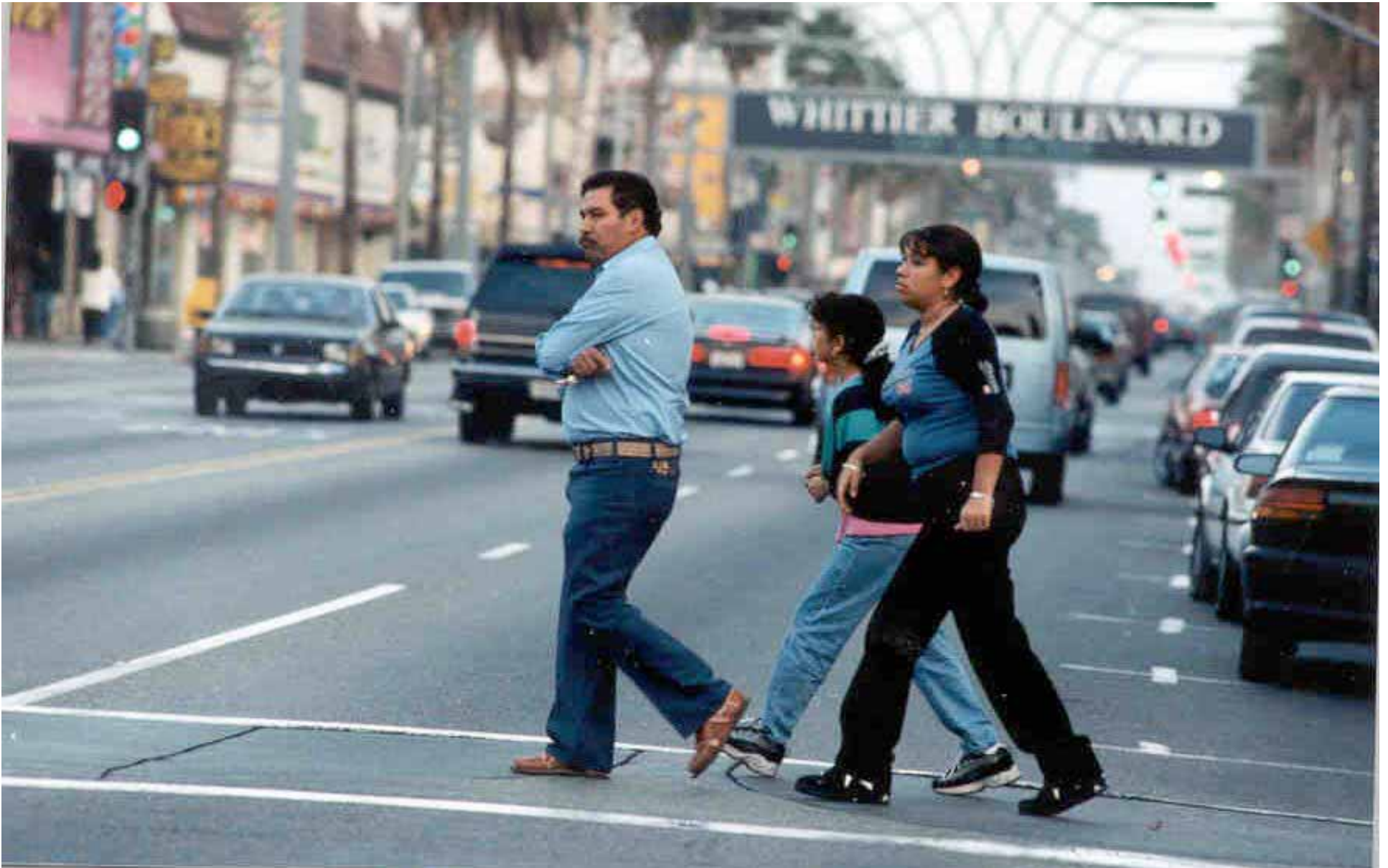
**Latino New Urbanism:  
Lessons Learned from the  
Southwest  
by James Rojas**

CUN

April 4, 2008



**What do Latinos do to the built environment to promote access/mobility??**



**Rates of pedestrian fatalities are highest amongst Latinos in LA County**





In many suburban communities sidewalks may not be wide enough



**Walking children to school**





Rates of public transit usage are highest amongst Latinos in LA County.



Lack of bus stop amenities





An unhealthy place to wait for the bus





Vendors at bus stops



Rates of bicycle fatalities in LA County are highest amongst Latino males between the ages of 30 and 40.





Bikes on buses is a very successful program in LA County



Murals fill in blank walls to help promote walking





Props and pictures help promote walking



Many supermarkets in low-income neighborhoods provide free shuttle service





Daylaborers use the streets and parking lots to sell their services

## Mariachi Plaza







Expanding the use of freeway on and off ramps





Transformation of sidewalks





Before: 1990

Today: 2008





Simple vending practices

A car and trunk provides opportunity







Vendors promote walking in an auto-oriented landscape



Mobile store in the San Fernando Valley







Pushcart vendors





Multi-use parking lot



Recycled Gas Stations





Paint is used to define space.

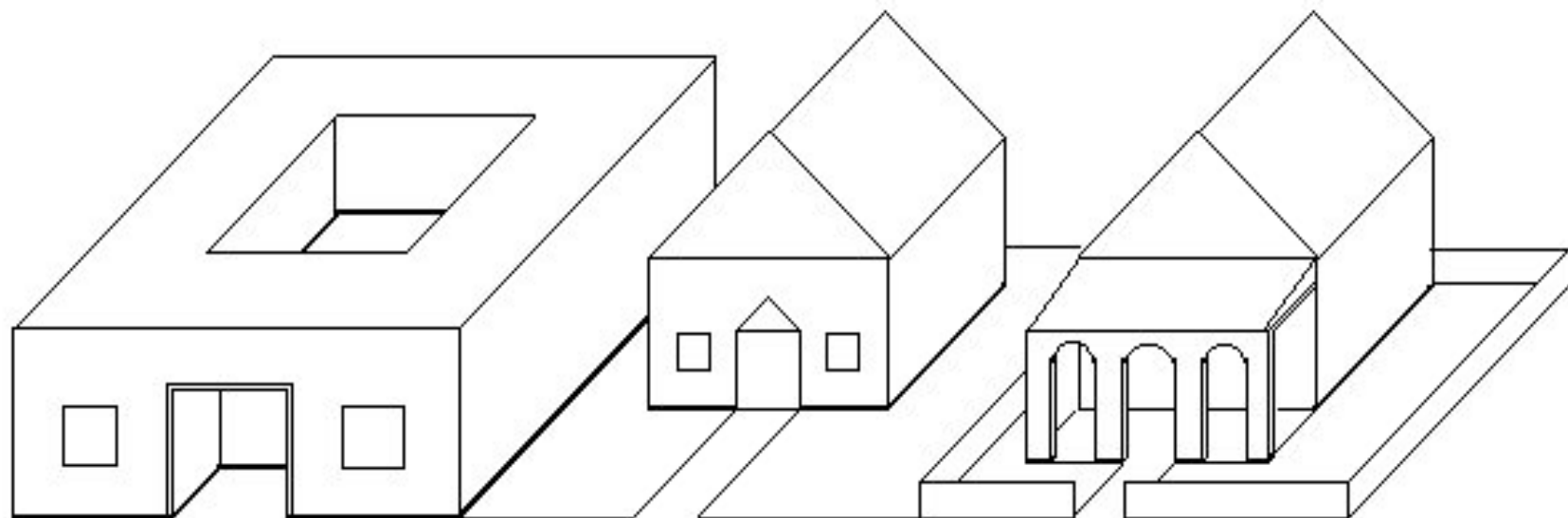




**The Los Angeles Fashion District has the highest pedestrian counts outside Times Square New York**



## EVOLUTION OF EAST LOS ANGELES VERNACULAR



**Traditional Mexican  
Courtyard House**

**American  
Suburban**

**East Los Angeles  
Vernacular**





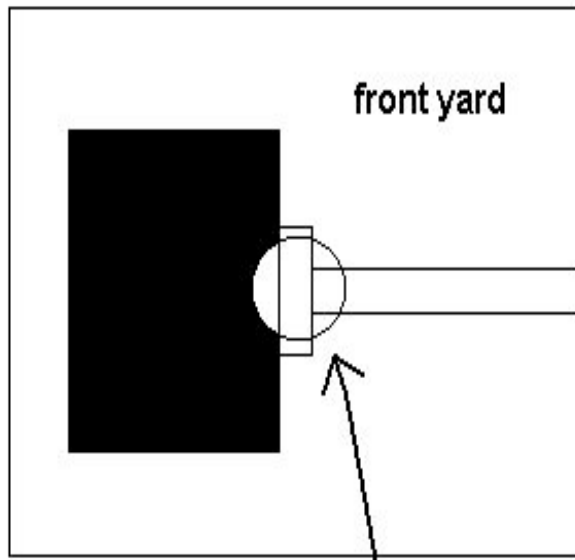


Before: 1990

Today: 2008



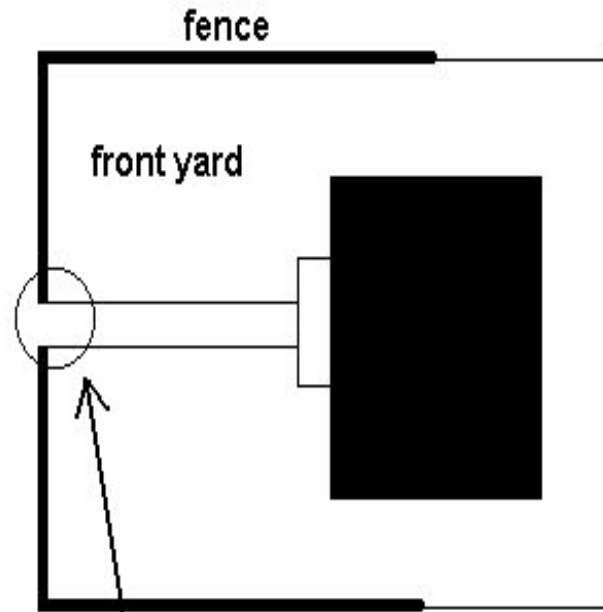
○ SHIFTING THRESHOLD



Typical Suburban Threshold



street



Threshold in East Los Angeles



Fences are points of interaction





**Interesting personalized front yards help promote walking**





**Social interaction help promote walking**



## Garage Conversions





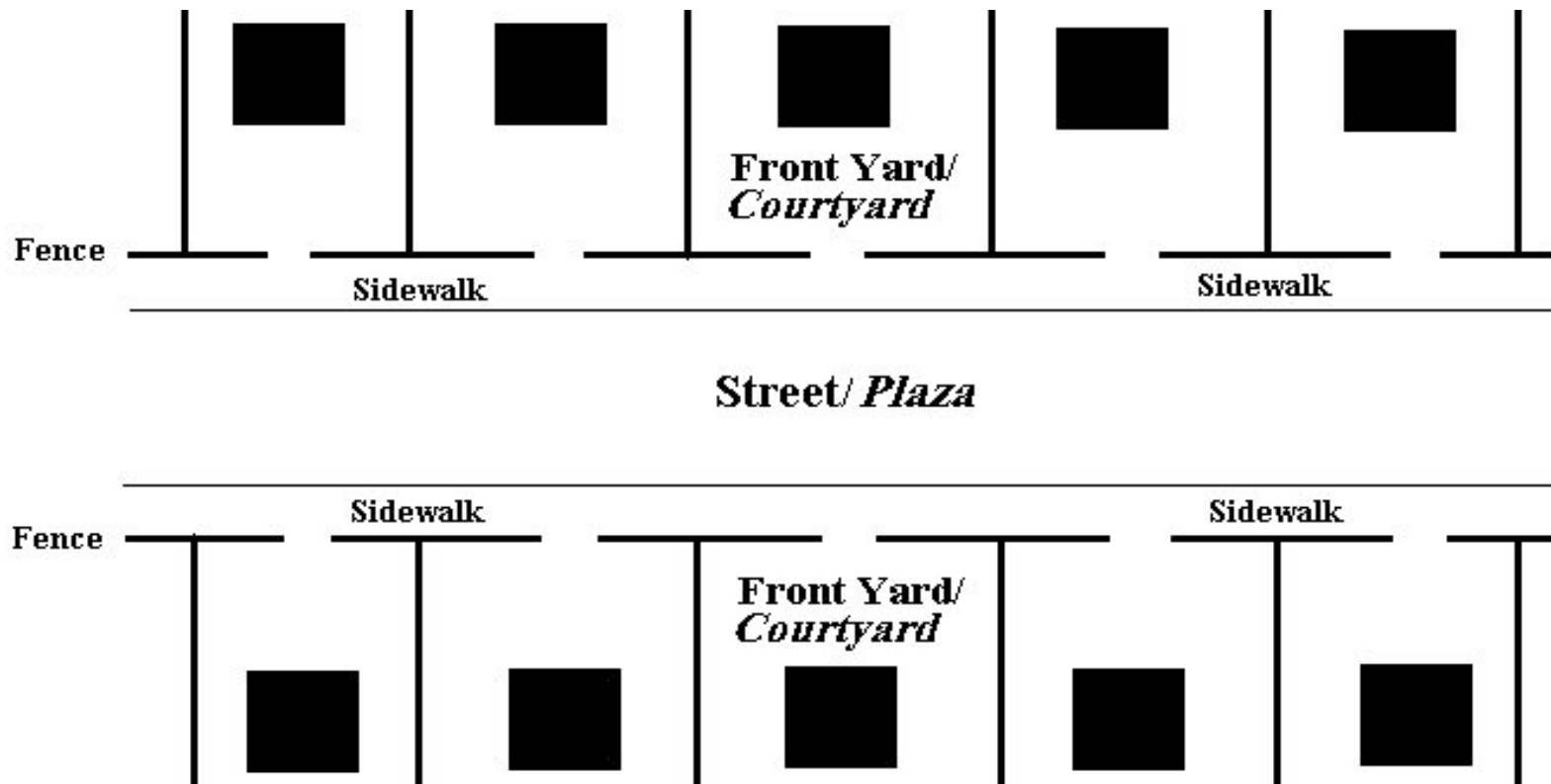


ECO Density?









Latino behavior patterns are changing the nature of suburbs in the Southwest.

[www.latinurbanforum.com](http://www.latinurbanforum.com)