

Amsterdam South – 1915 – Hendrik Berlage





EIN MUSEUM FÜR ERNST MAY UND DAS NEUE FRANKFURT



BILDER AUS DER RÖMERSTADT UM 1930

Frankfurt – 1930 – Ernst May



Frankfurt – 1930 – Ernst May



Amsterdam South - 1915 – Hendrik Berlage



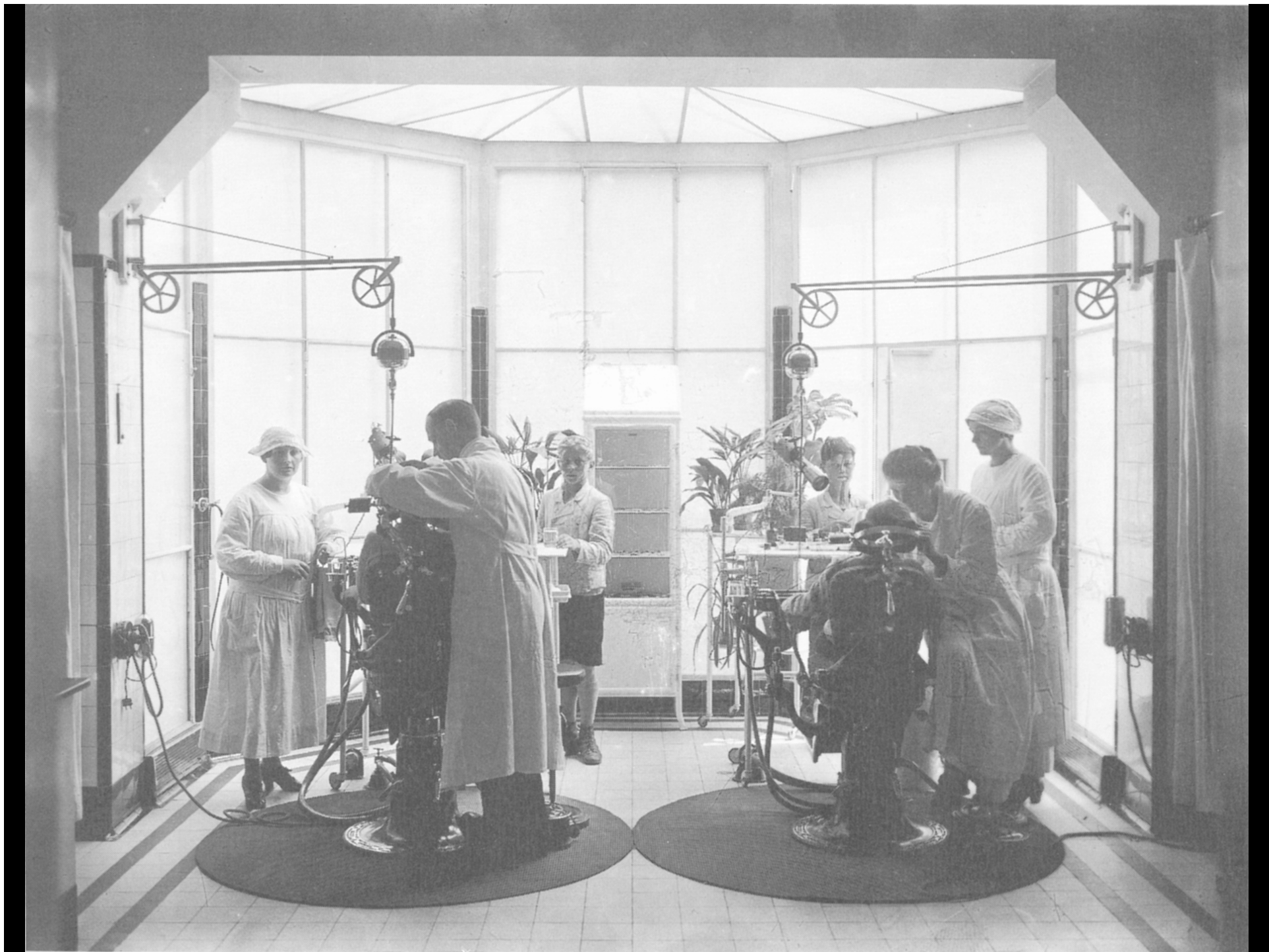
Werkbundsiedlungs Fallmodul – Zurich-Neubühl – 1930



Rabenhof – Vienna - 1928



Fuchsenfeldhof - Vienna - 1924





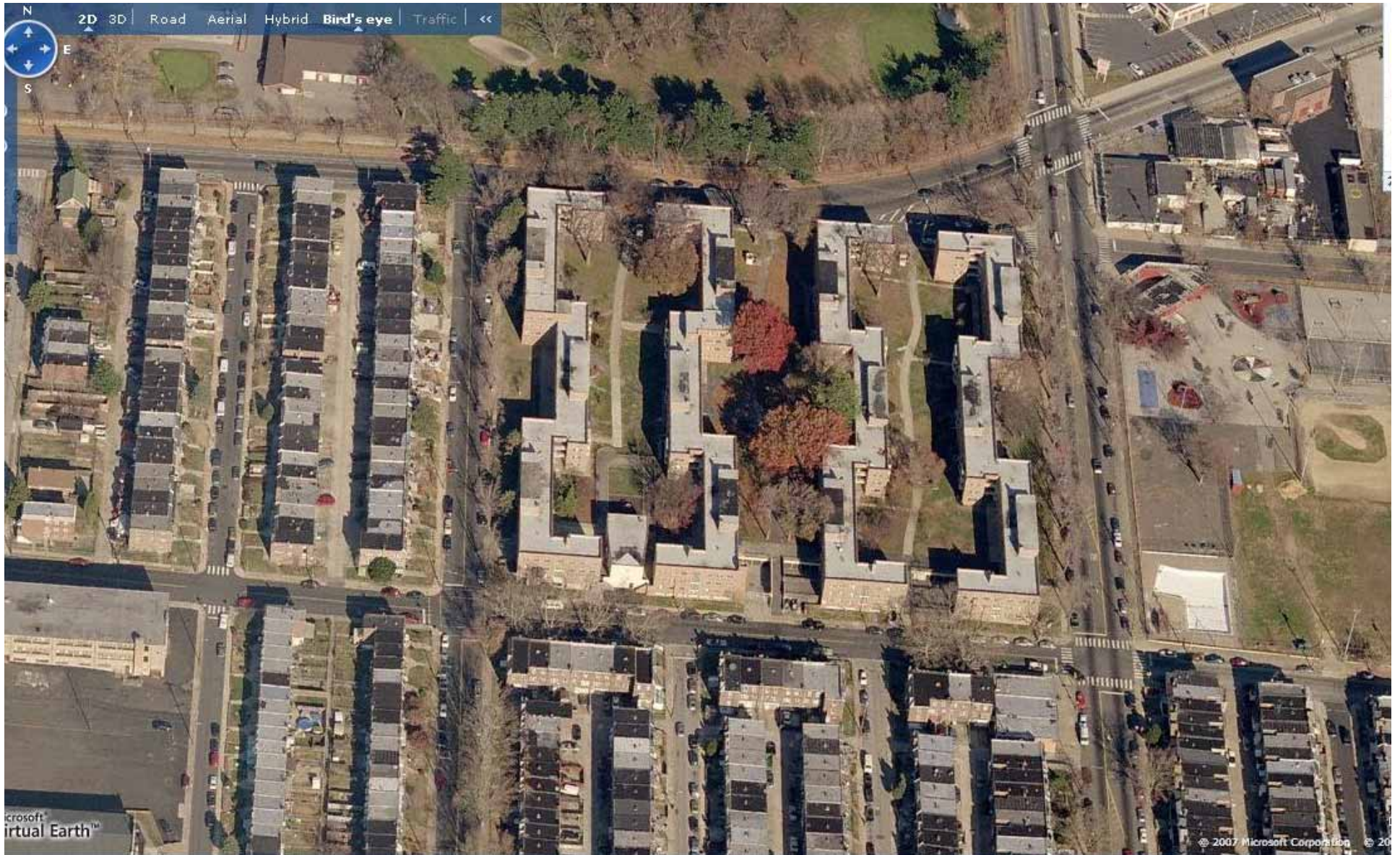
Amalgamated Clothing Workers – Bronx – 1927 – Springsteen and Goldhammer



Amalgamated Clothing Workers – Bronx – 1928 – Springsteen and Goldhammer



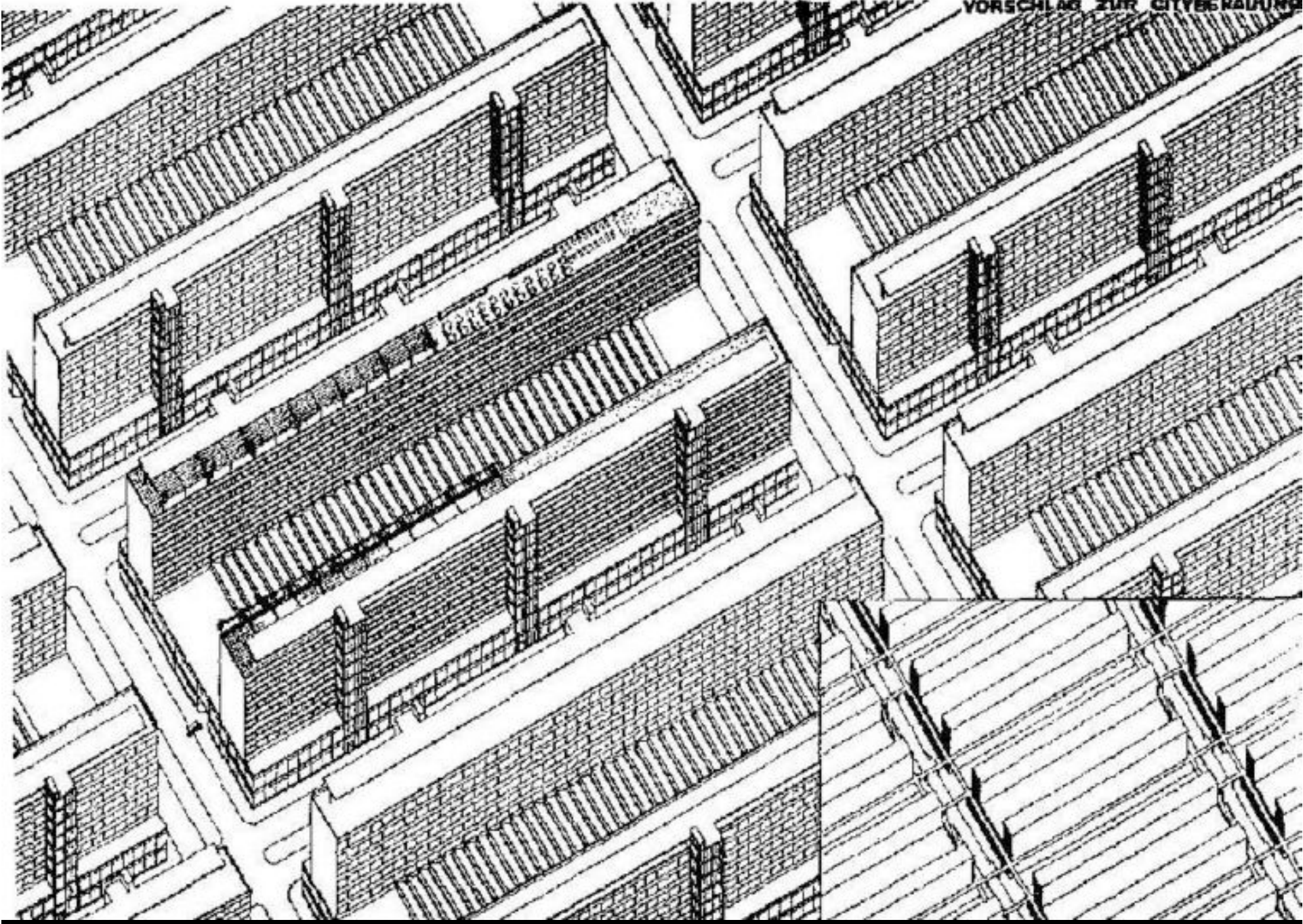
Williamsburg Houses – Brooklyn – 1938 – William Lescaze & Others



Carl Mackley Houses – N. Philadelphia – 1933-34 – Oscar Stonorov



Queens Bridge Houses - 1940





Robert Taylor Houses - Chicago



Karl Marx Hof – Vienna – 1930



Social Housing – Udine – 1928 – Carlo Miani









© Bill Dunster



BedZED – London – 2001 – Bill Dunster



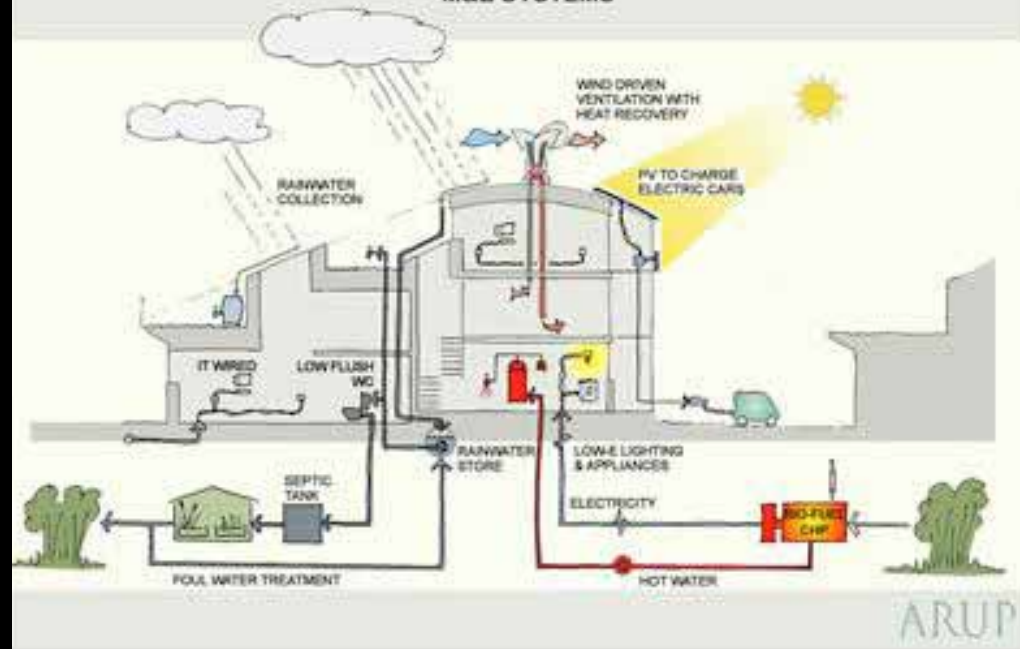


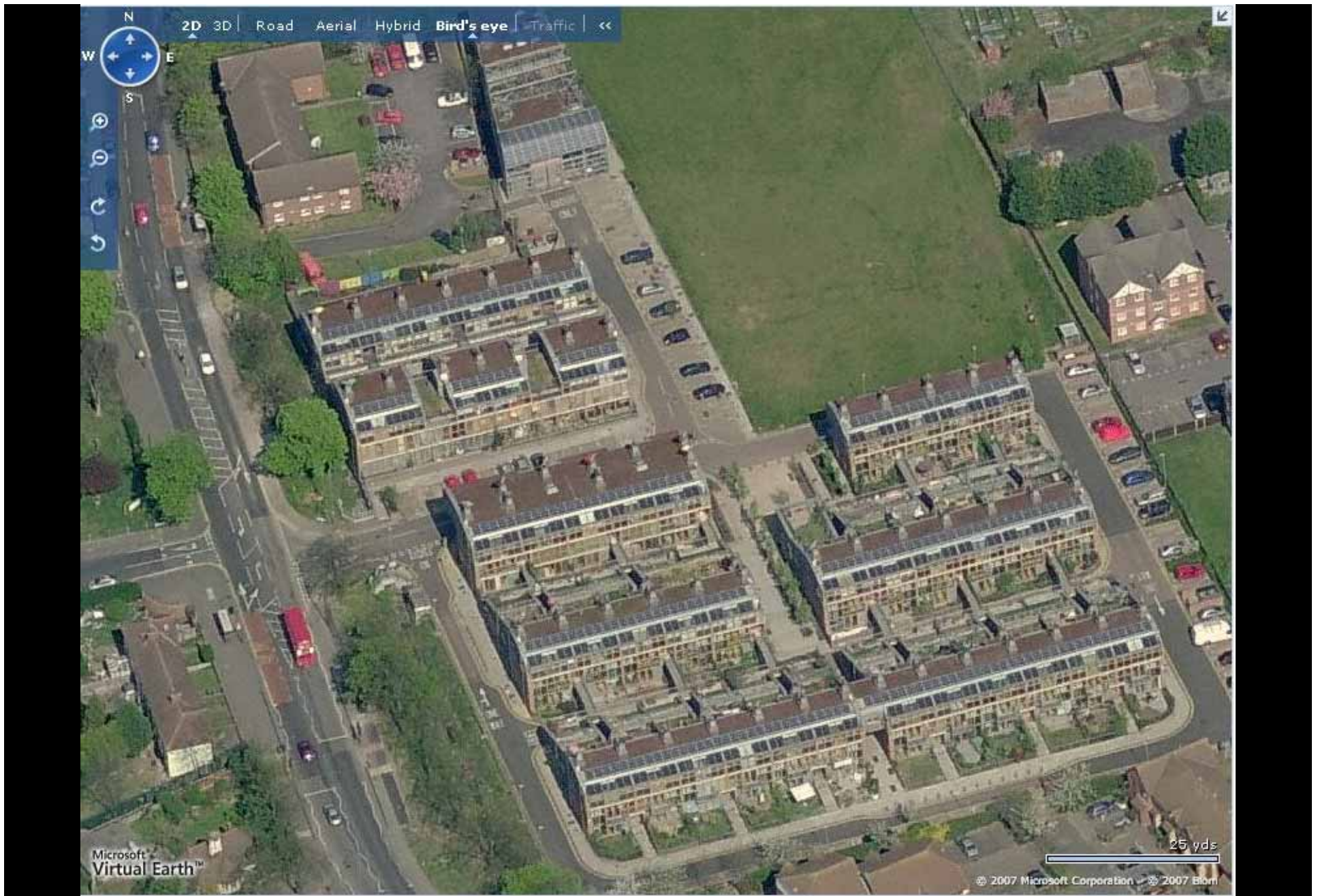
3.6 ZED in a Box drawings

3.6.1 Cutaway isometric views (front and back)



M&E SYSTEMS



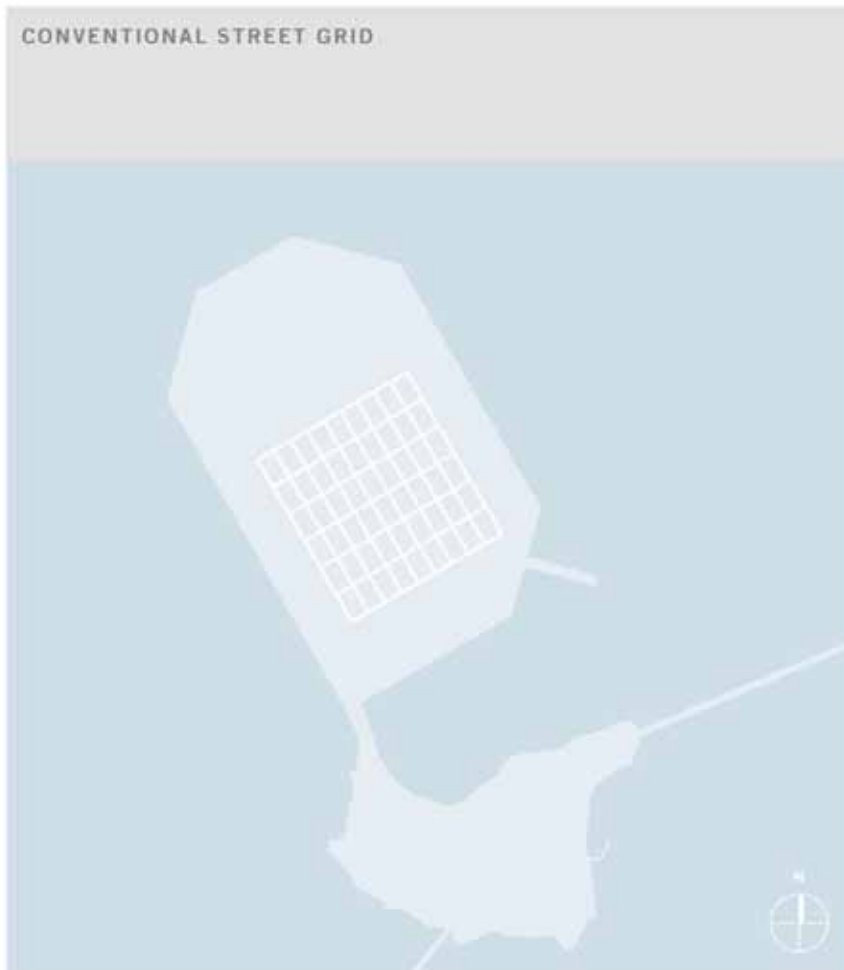


BedZED – London – 2001 – Bill Dunster



Land Use: Microclimate

Rotate the conventional street grid 35 degrees to orient key streets southerly to allow the sun to penetrate deeply into the neighborhoods, streets and neighborhood parks.



Aligned wind direction street grid creates wind channels, accelerating wind velocities and compromising pedestrian comfort.

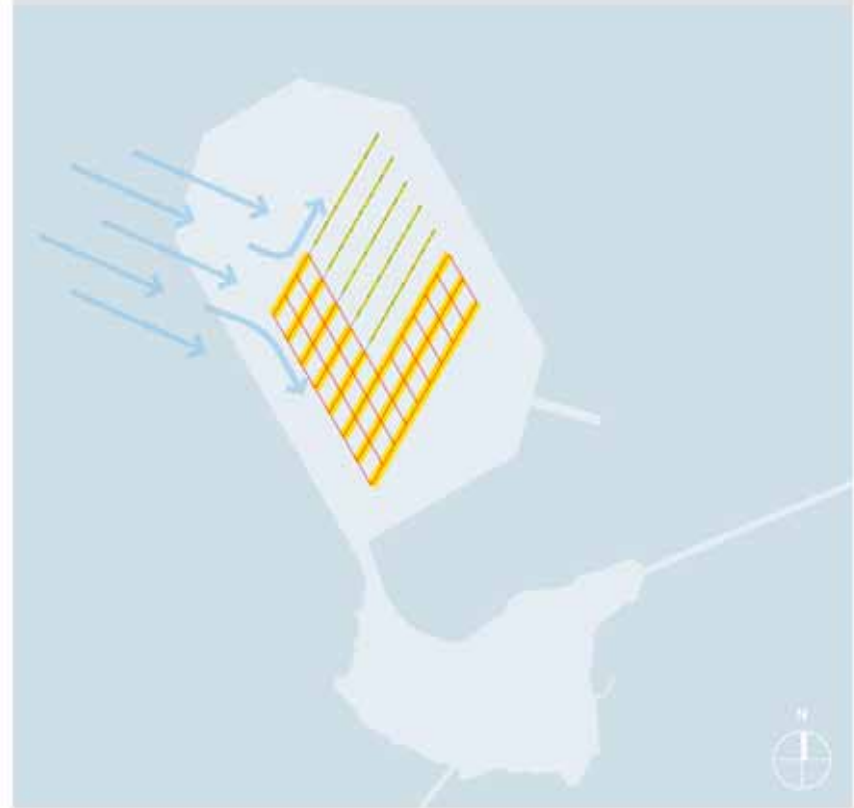
Angle the secondary street grid to diffuse prevailing winds and create a more hospitable pedestrian environment.

Strategically place natural and architectural wind blocks as additional wind-calming devices.

PREVAILING WESTERLY WIND



ANGLED STREET GRID

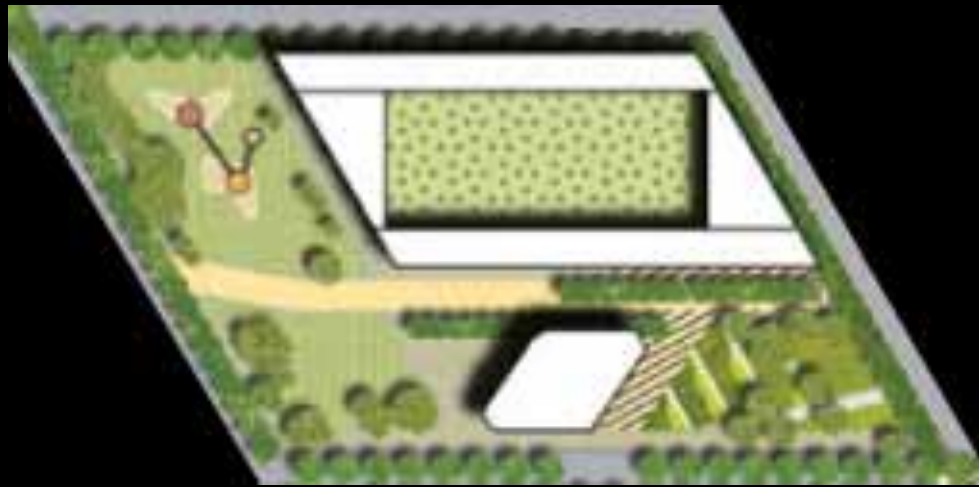


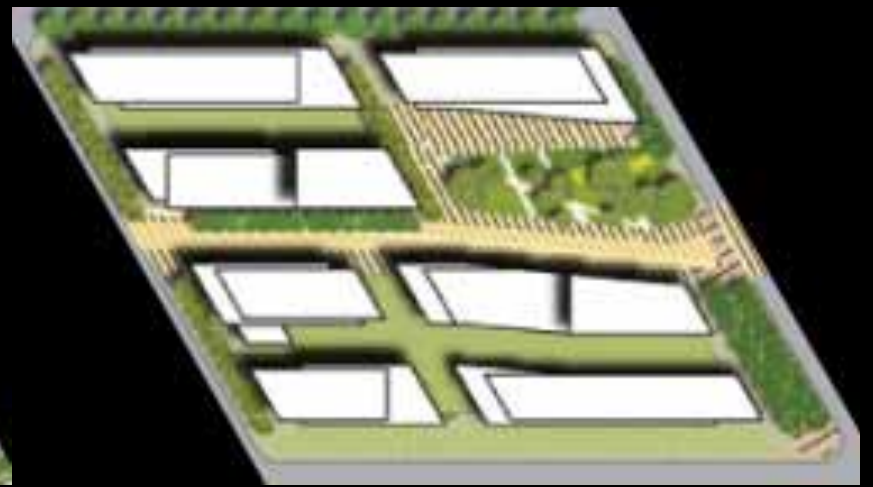
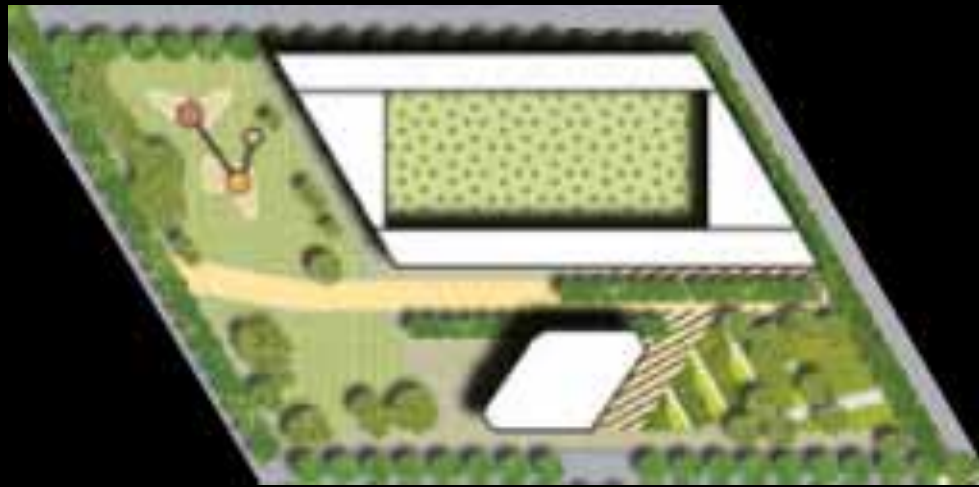
Land Use: Microclimate

Create a series of wind rows composed of trees and buildings across Treasure Island to deflect the wind in open spaces and neighborhoods.







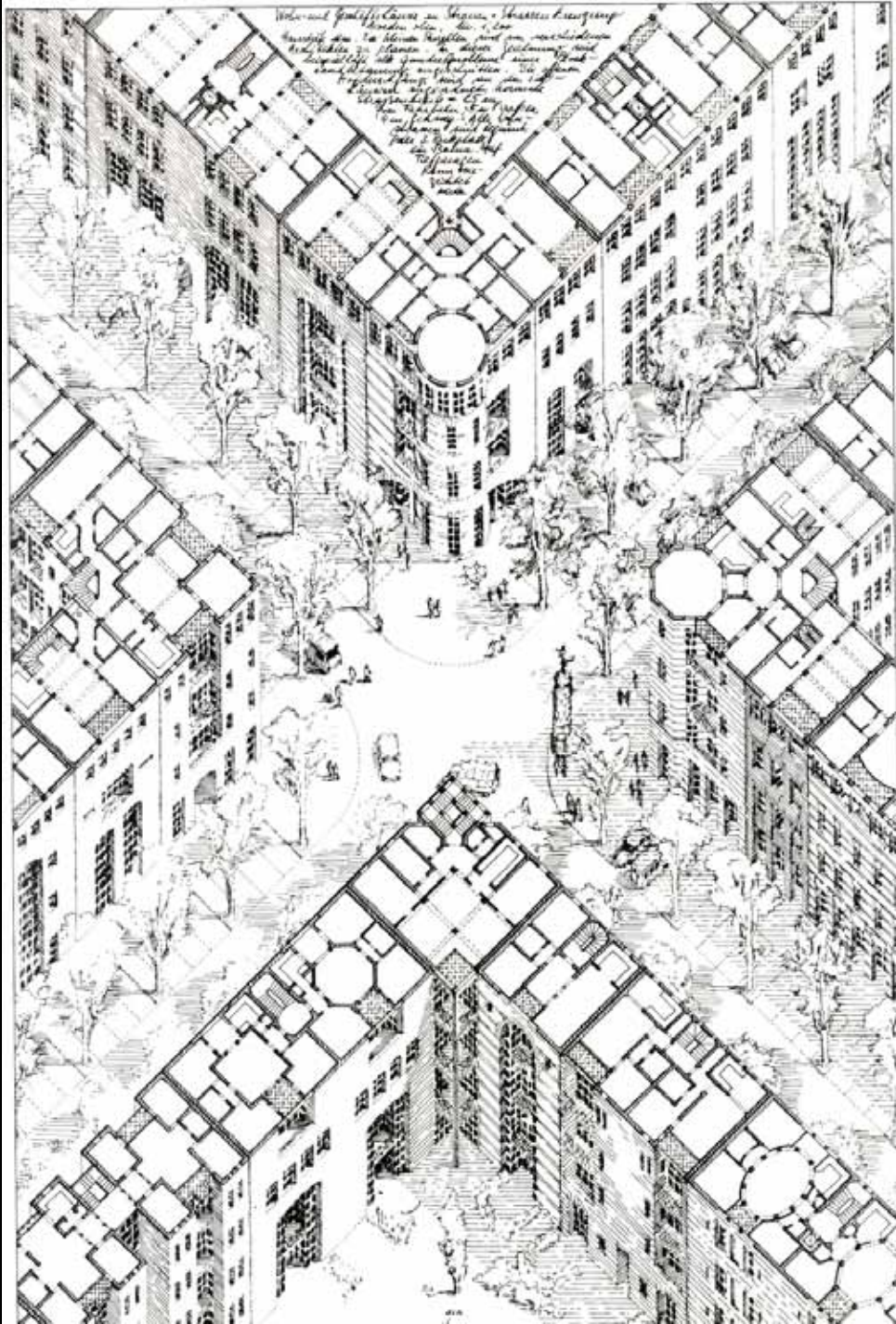














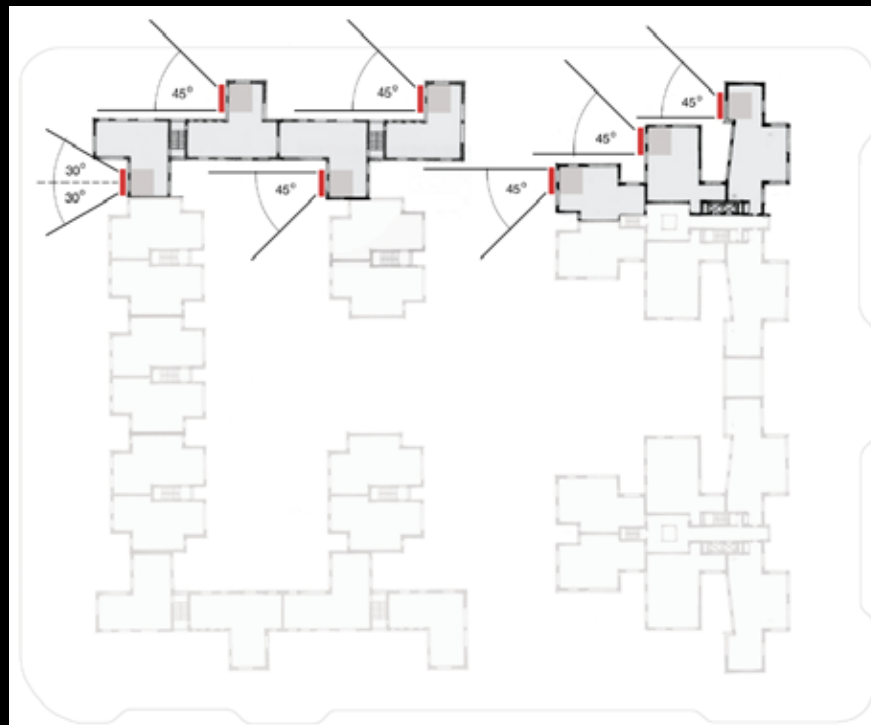
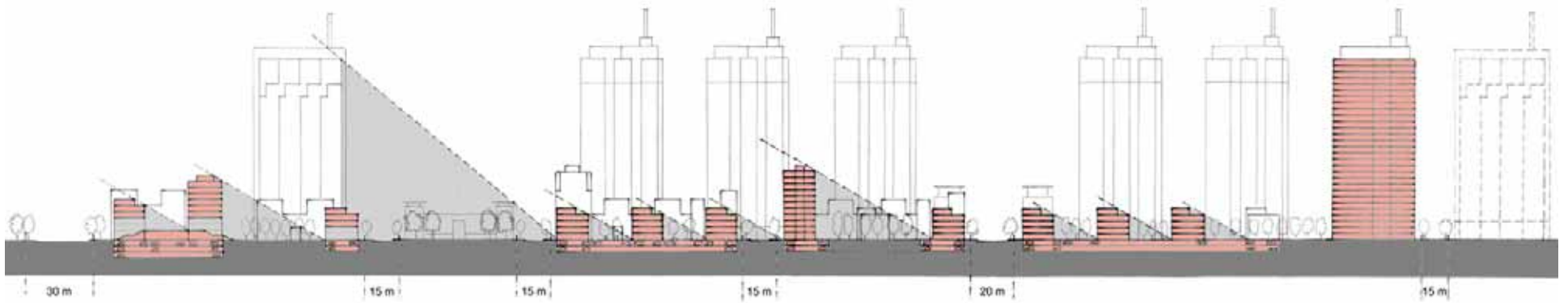




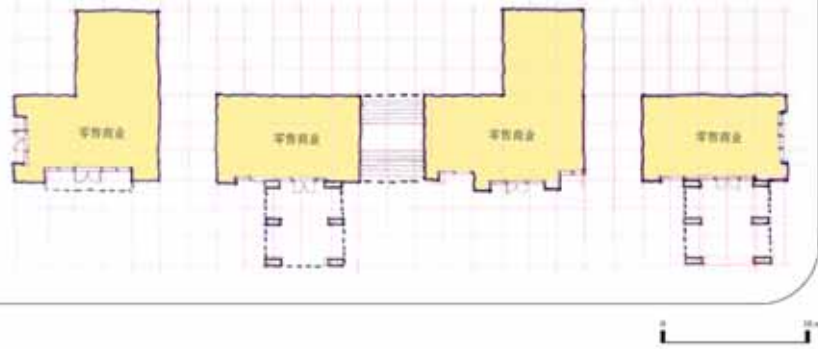
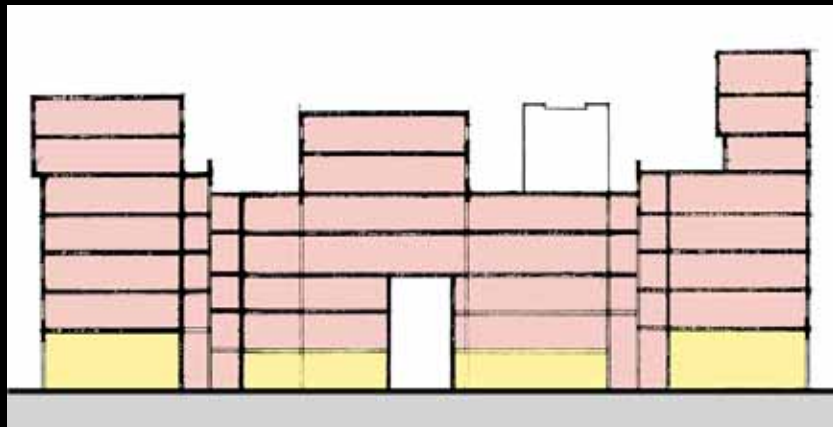


Illustrative Plan

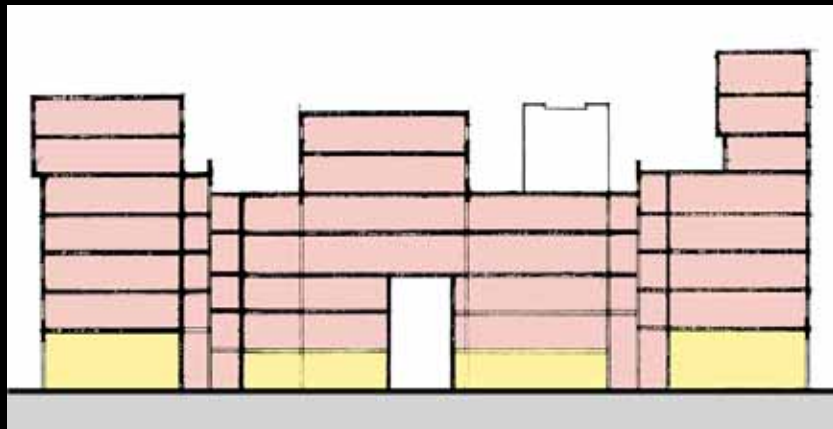




Light Study



Building Plans



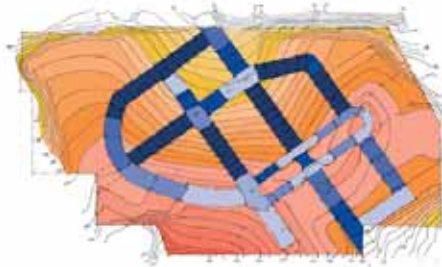
Building Plan



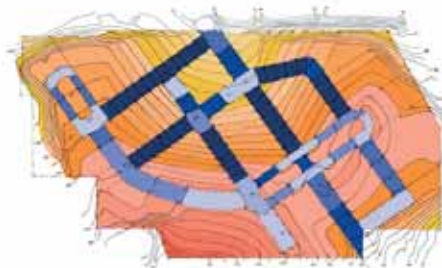
Slope Analysis



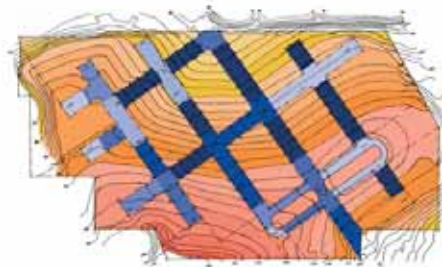
Existing Roads



Minimum Intervention



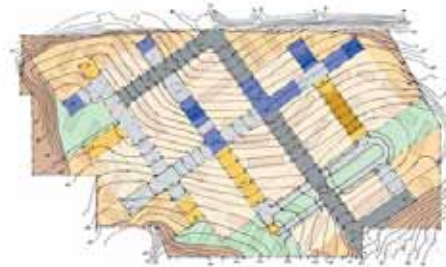
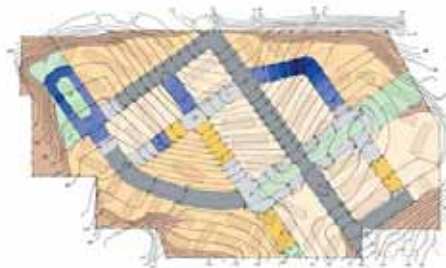
Modified Grid

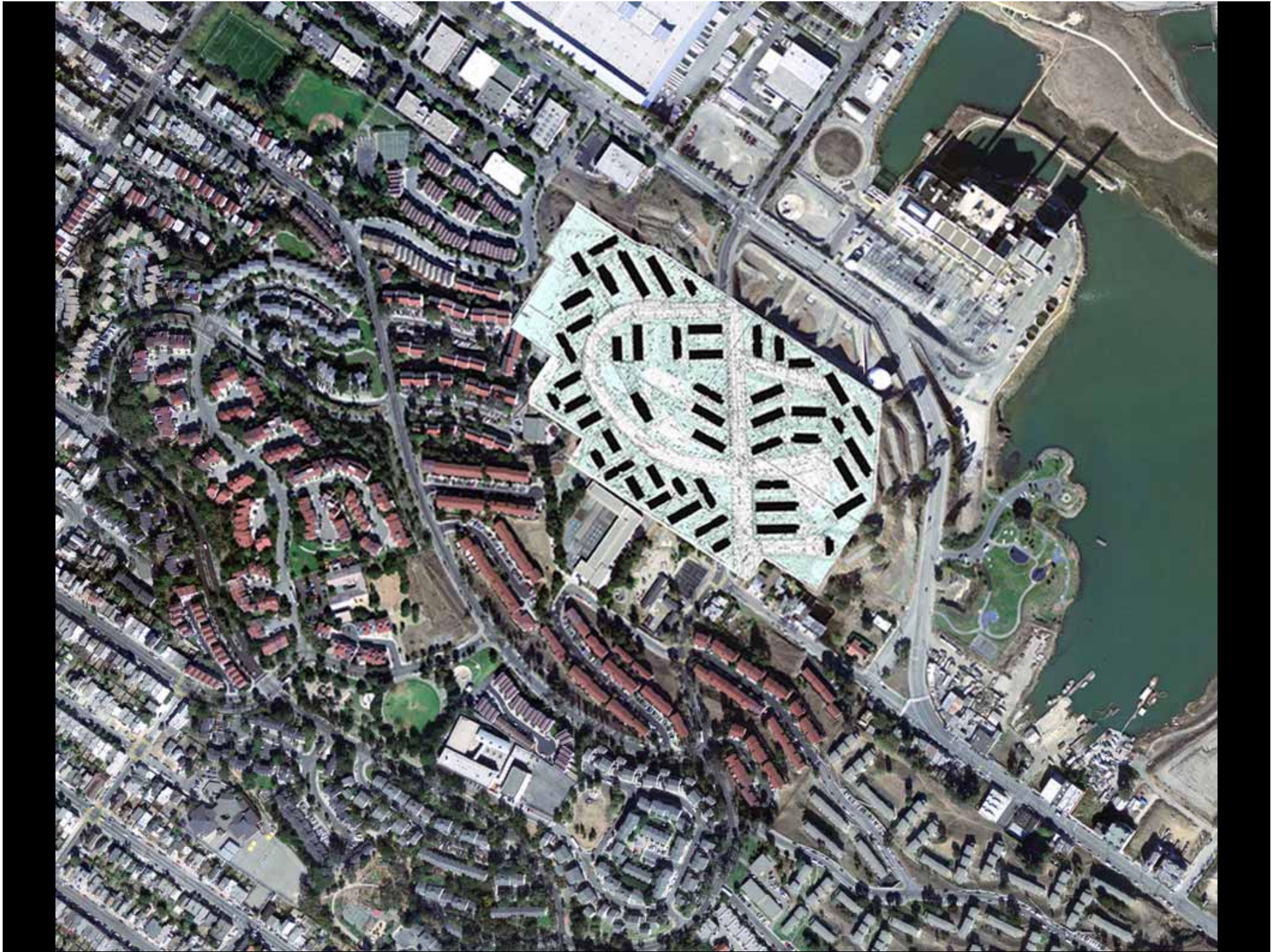


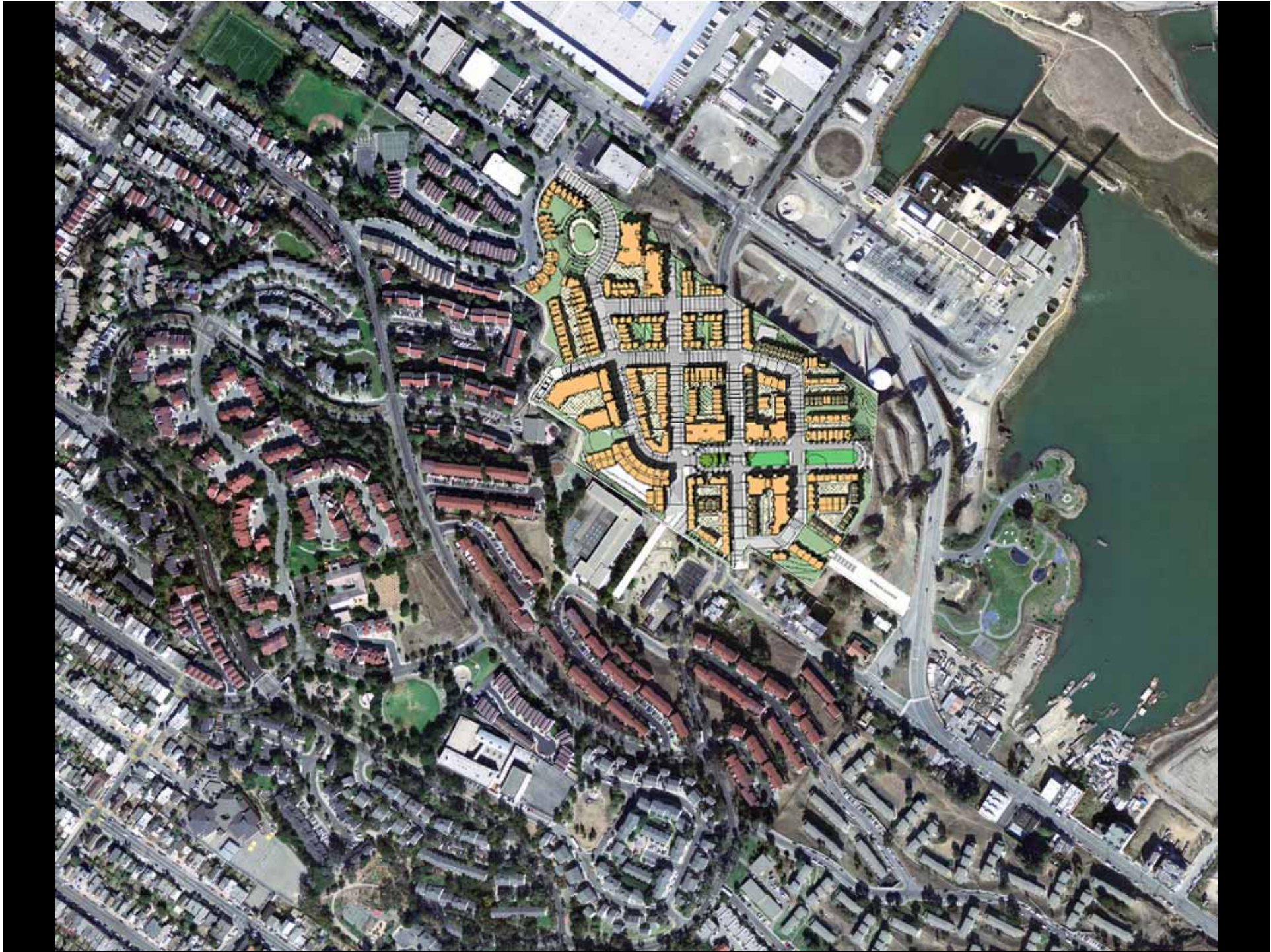
Ideal Grid

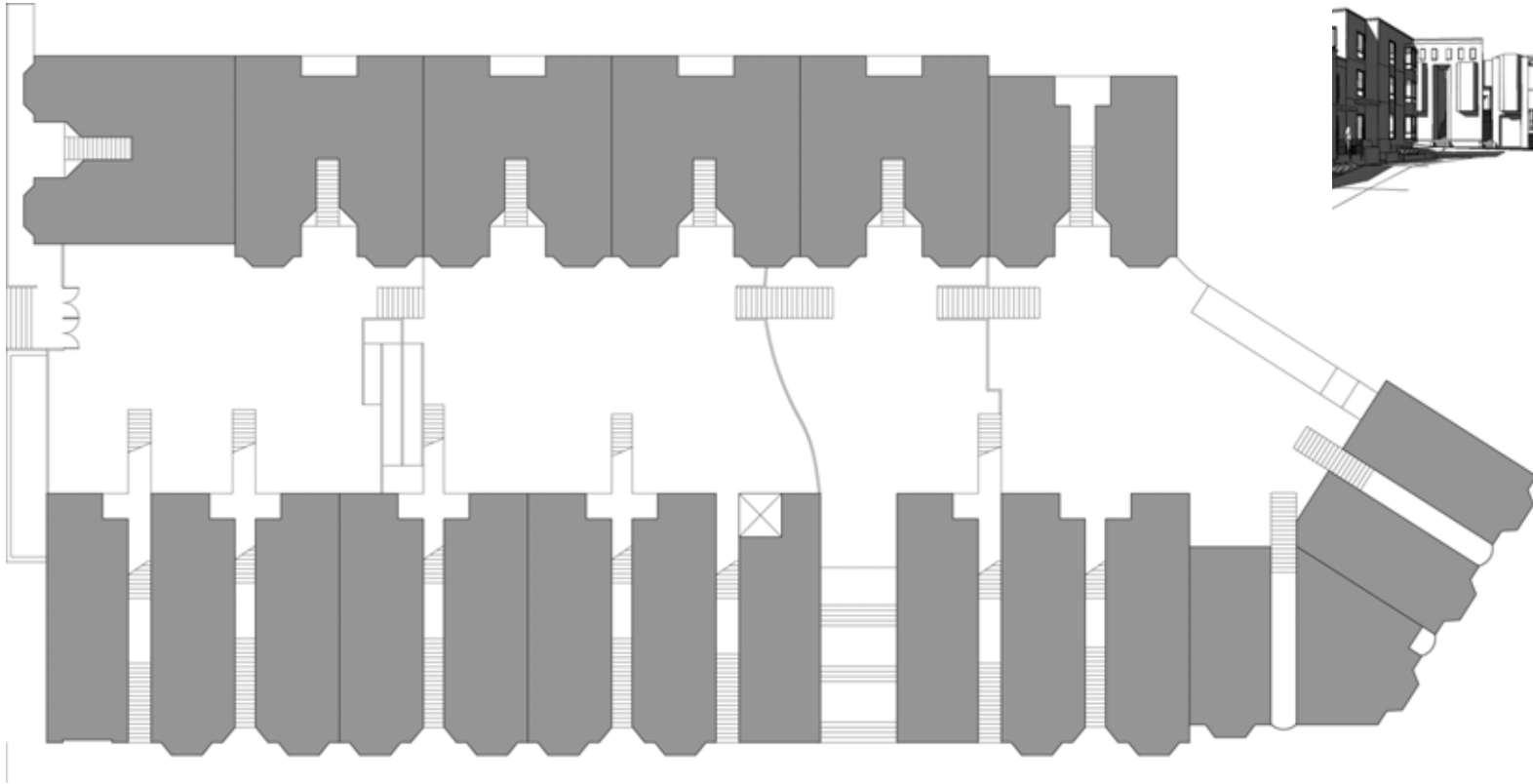


Road Preservation



















PILOT VERSION



**LEED for Neighborhood Development
Rating System**

Developed through a partnership of the Congress for New Urbanism,
Natural Resources Defense Council and the U.S. Green Building Council

