



Pattern Book on Inclusive Housing Design

Edward Steinfeld

RERC on Universal Design and the Built Environment

Center for Inclusive Design and Environmental Access

University at Buffalo

The State University of New York

Buffalo, NY 14214-3087

CNU Conference, April 2008, Austin TX

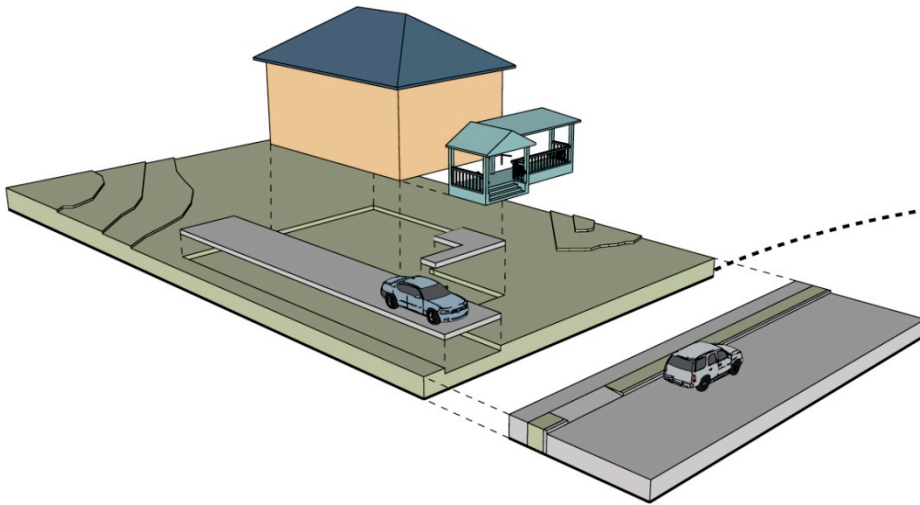


Section 1: Purpose and Scope





Section 2: How To Use This Book



Components

Lot Length Available (L)	16'	20'	24'	28'	32'	36'	40' +
	(192")	(240")	(288")	(336")	(384")	(432")	(480")+
For 2 Even Ramp Sections							
x max	6'	10'	14'	18'	22'	26'	30'
	(72")	(120")	(168")	(216")	(264")	(312")	(360")
y max	6"	10"	1'-2"	1'-6"	1'-10"	2'-2"	2'-6"
	(6")	(10")	(14")	(18")	(22")	(26")	(30")
h max	1'	1'-8"	2'-4"	3'	3'-8"	4'-4"	5'
	(12")	(20")	(28")	(36")	(44")	(52")	(60")
If Stairs Are Between Ramp Sections							
z min	2'	2'-8"	3'-4"	4'-2"	5'	5'-10"	6'-8"
	(24")	(32")	(40")	(50")	(60")	(70")	(80")
f	8'	8'-8"	9'-4"	10'-2"	11'	11'-10"	12'-8"
	(96")	(104")	(112")	(122")	(132")	(142")	(152")

Possible Component dimensions

Section 3: Livability and Access



No-step front entry



No-step front entry

Visitability Conditions

- One no-step entry
- Halls & doorways must have at least a 32" wide clear opening
- Basic access to at least a half bath on the main floor
- Reinforced walls in water closets
- Locate light switches and electrical outlets within comfortable reach



Section 4: Neighborly House





Section 5: Neighborhood Patterns



Section 6: Block Components

Intersections

Intersections are important block components for accessible design. If not properly designed, they can be hazardous and inconvenient.

Intersection with no median

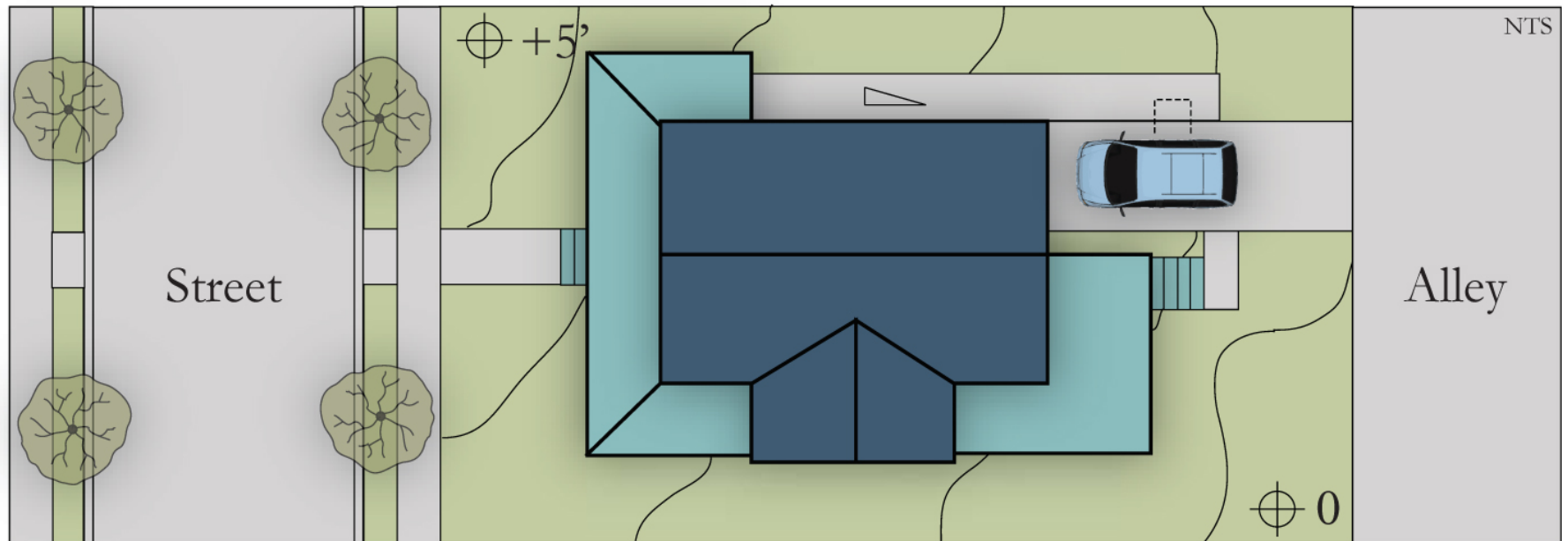
Intersection with discontinued cross street

Intersection with median strip on one street.

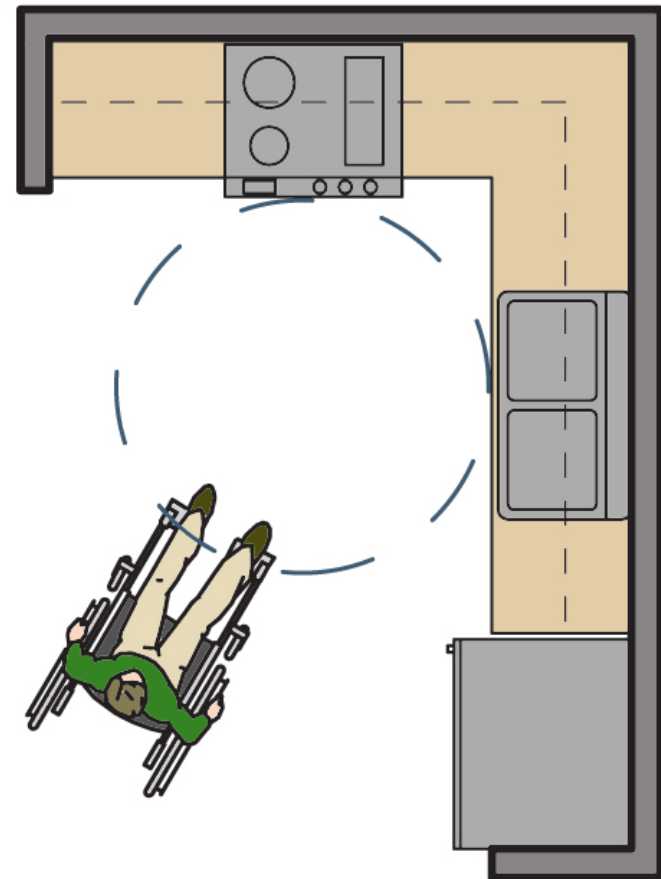
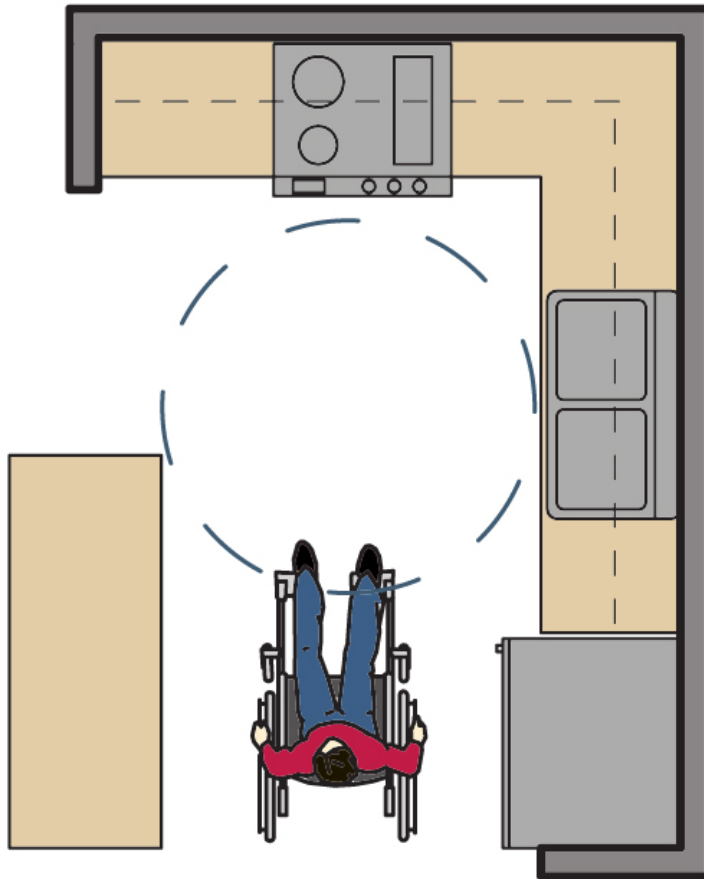




Section 7: Lot Components



Section 8: House Components

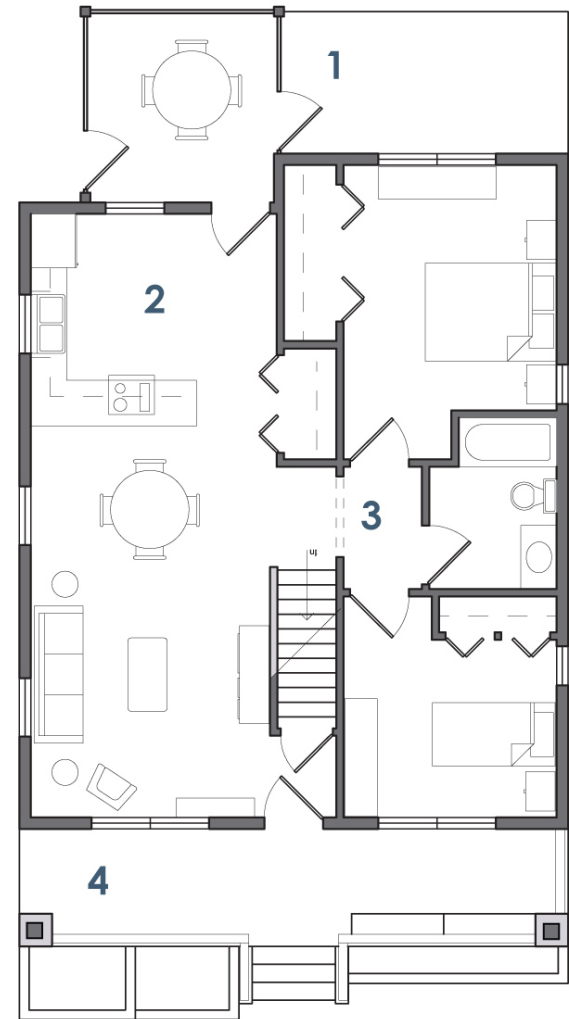




Section 9: Architectural Applications



Front Elevation



First Floor Plan

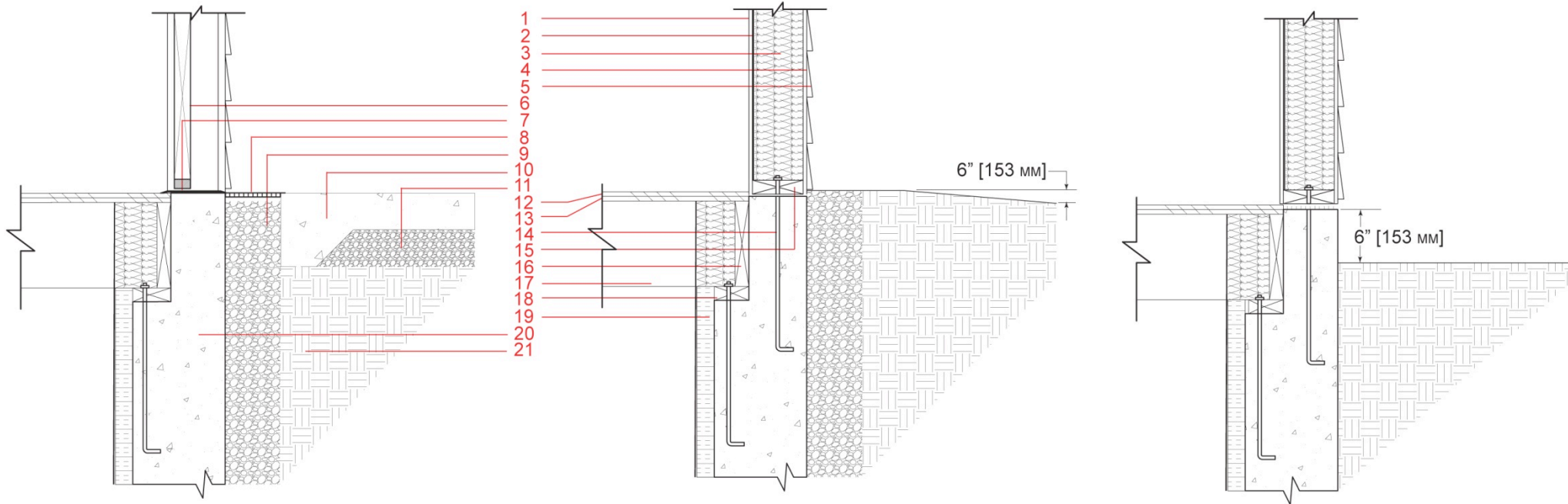


Section 10: Construction Details

SECTION A: ENTRY

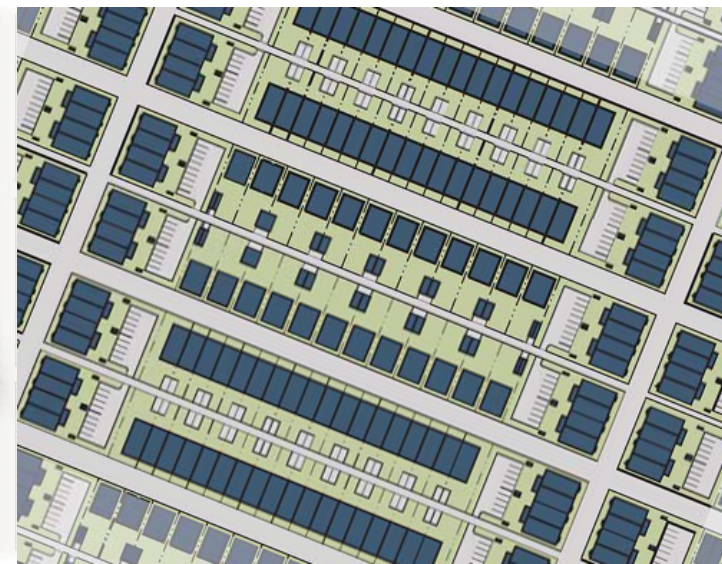
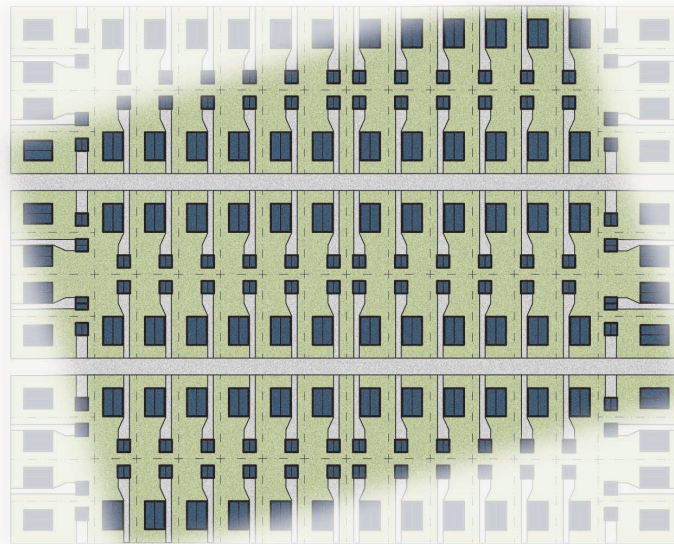
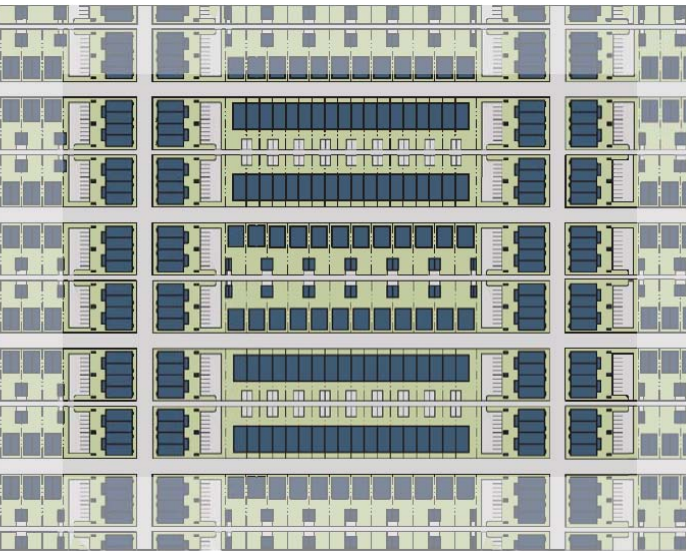
SECTION B: TRANSITION

SECTION C: SITE GRADE





We Need Your Help





We Need Your Help



Image_1



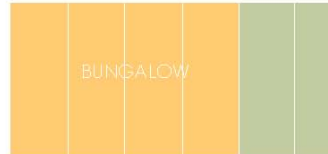
Figure_1



Image_1



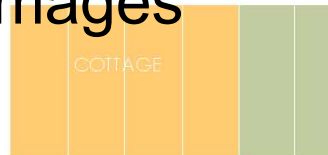
Figure_1



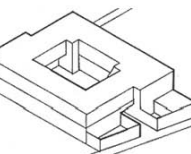
Image_1



Figure_1



Image_1



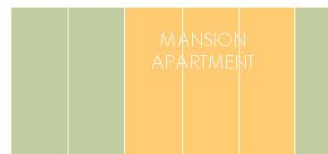
Figure_1



Image_1



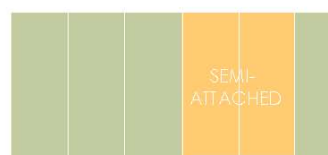
Figure_1



Image_1



Figure_1



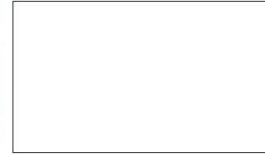
Image_1



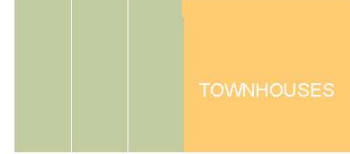
Figure_1



Image_1



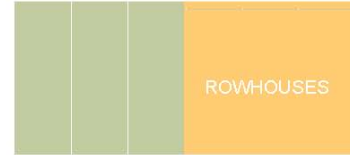
Figure_1



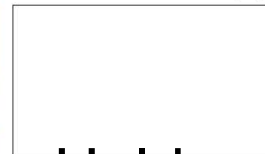
Image_1



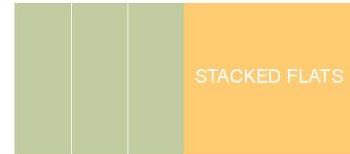
Figure_1



Image_1



Figure_1



Image_1



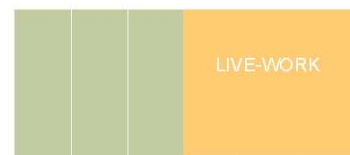
Figure_1



Image_1



Figure_1



Place Holder Images

Place Holder Images



Center for Inclusive Design and Environmental Access (IDEA)

*Home of the RERC on Universal Design in
the Built Environment*



Funding provided by the
U.S. Dept. of Education,
National Institute on
Disability and
Rehabilitation Research

School of Architecture and Planning
University at Buffalo
378 Hayes Hall
Buffalo, NY 14214-3087

Tel:

716-829-3485 ext. 329

Fax:

716-829-3861

Email:

arced@buffalo.edu

Website:

<http://www.ap.buffalo.edu/idea>