

About Boulder

- 101,500 people
- 25 square miles
- Home of CU-Boulder serving 29,000 students
- County seat and employment center for Boulder County (pop: 215,000)
- 6 tenths sales tax dedicated to transportation





Broadway reconstruction 2002

- Pavement reconstruction
- Bridge replacement
- Pedestrian, bicycle and bus stop improvements
- Landscaping
- Storm drain and flood control improvements
- \$8 million project







Boulder – Tale of Two Cities

- West Boulder developed prior to the 50's
- East Boulder developed after auto oriented planning/transportation policy
- Boulder is in the midst of reclaiming its eastern area through changes in land use and creating mode choice

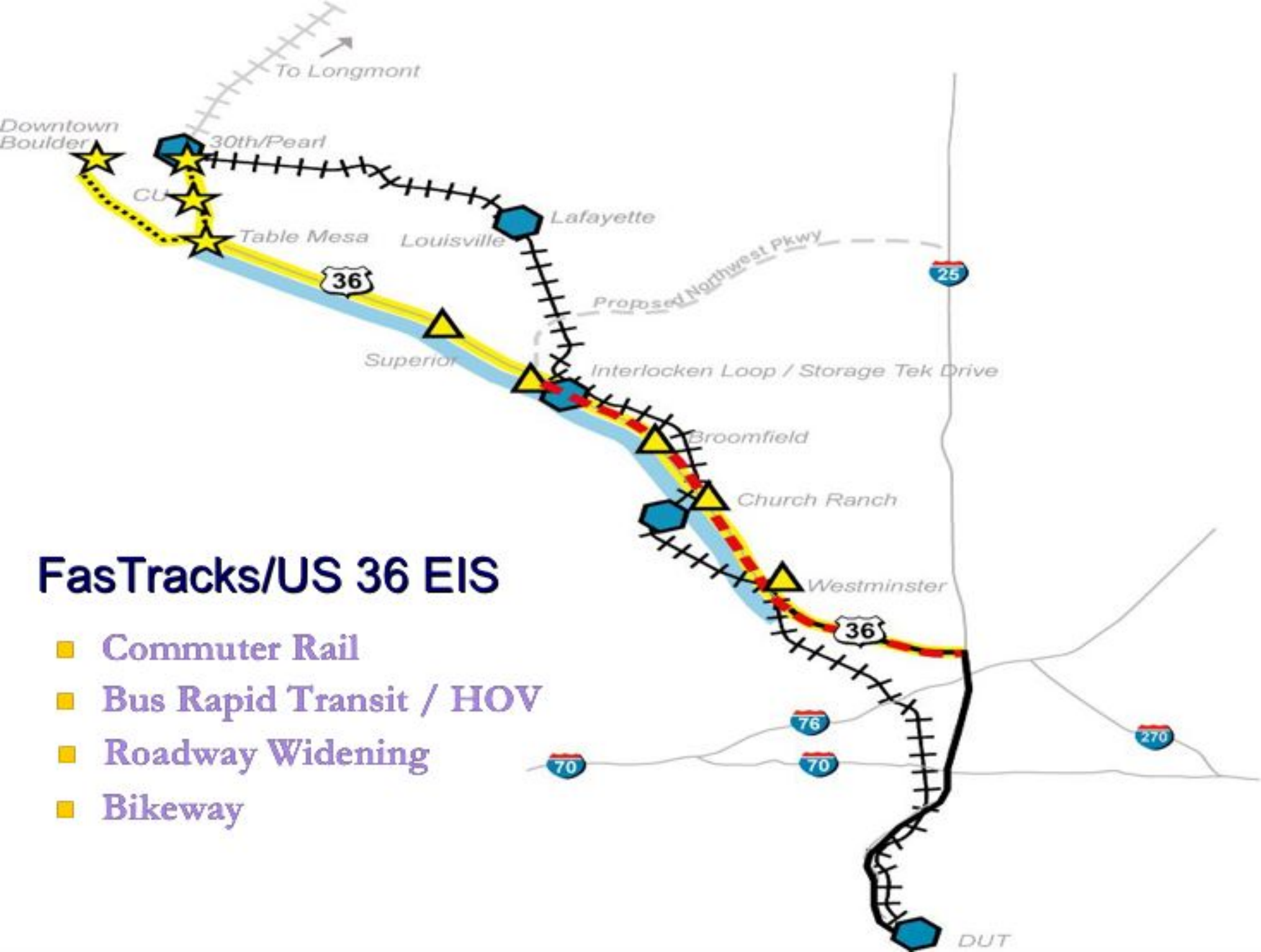
East Boulder – 28th St



← Welcome to CU !!

28th Street

- A major arterial roadway through the geographic center of the City.
- Connects with US 36 (to Denver to south, to Rocky Mountain National Park to north).
- Carries between 30,000 and 50,000 vehicles per day on up to 7 travel lanes.
- Many different land uses including residential, office, commercial, industrial and educational



FasTracks/US 36 EIS

- Commuter Rail
- Bus Rapid Transit / HOV
- Roadway Widening
- Bikeway





The 2003 Transportation Master Plan



Goals for design:

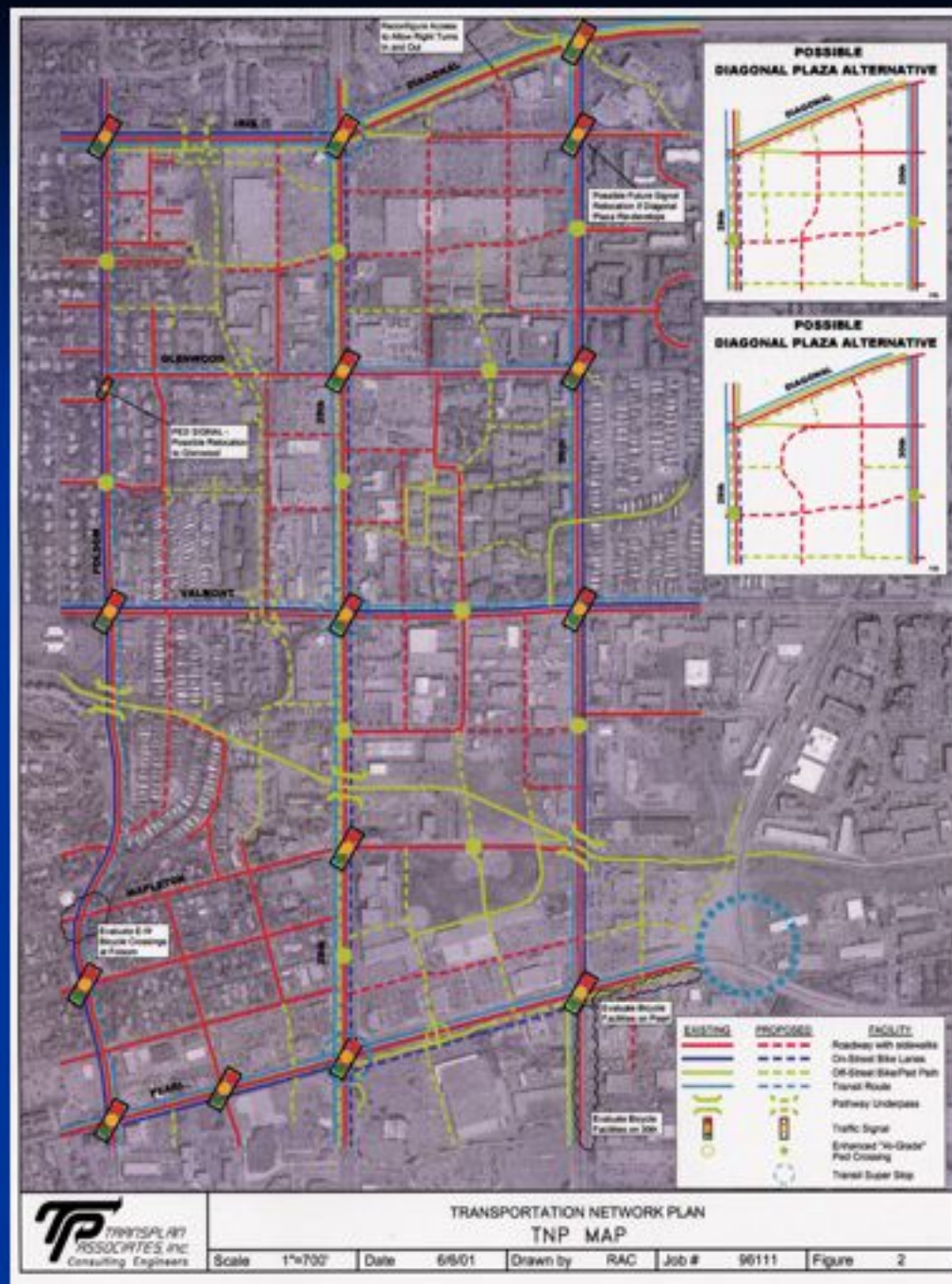
- Involve community and regional stakeholders
- Consider the needs of ALL modes of transportation.
- Balance the benefits of an improvement for one mode of transportation with its impacts on other modes.
- Consider overall role of 28th Street in the community.

Design Process

- Design Charette – June 2000
- 28th Street Corridor defined as:
 - Hello Boulder (south section)
 - New Town (middle section)
 - Service City (north section)

“Look at overall connections, not just curb-to-curb”

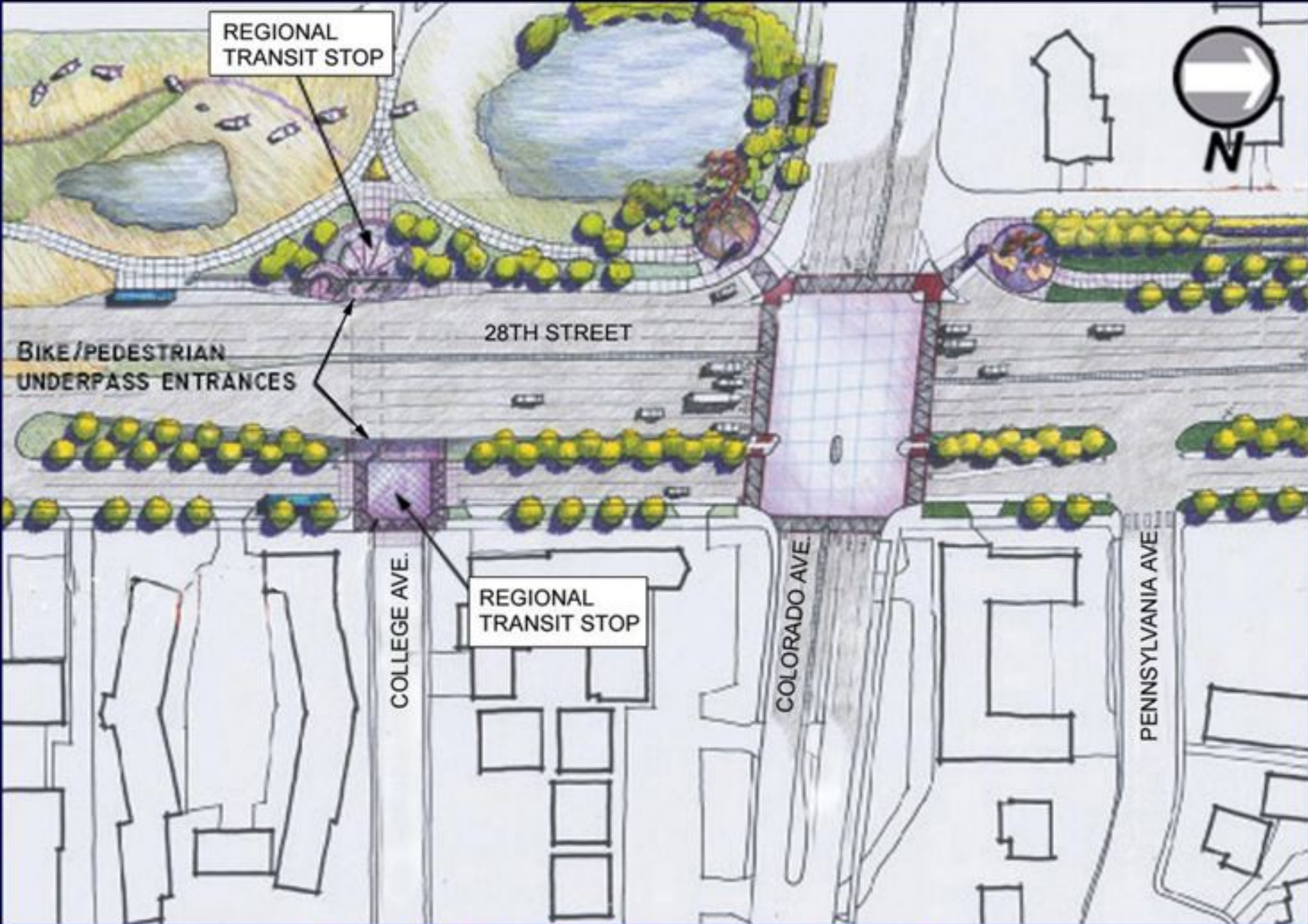
- A new planning product for Boulder: “Transportation Network Plans” for central and north sections



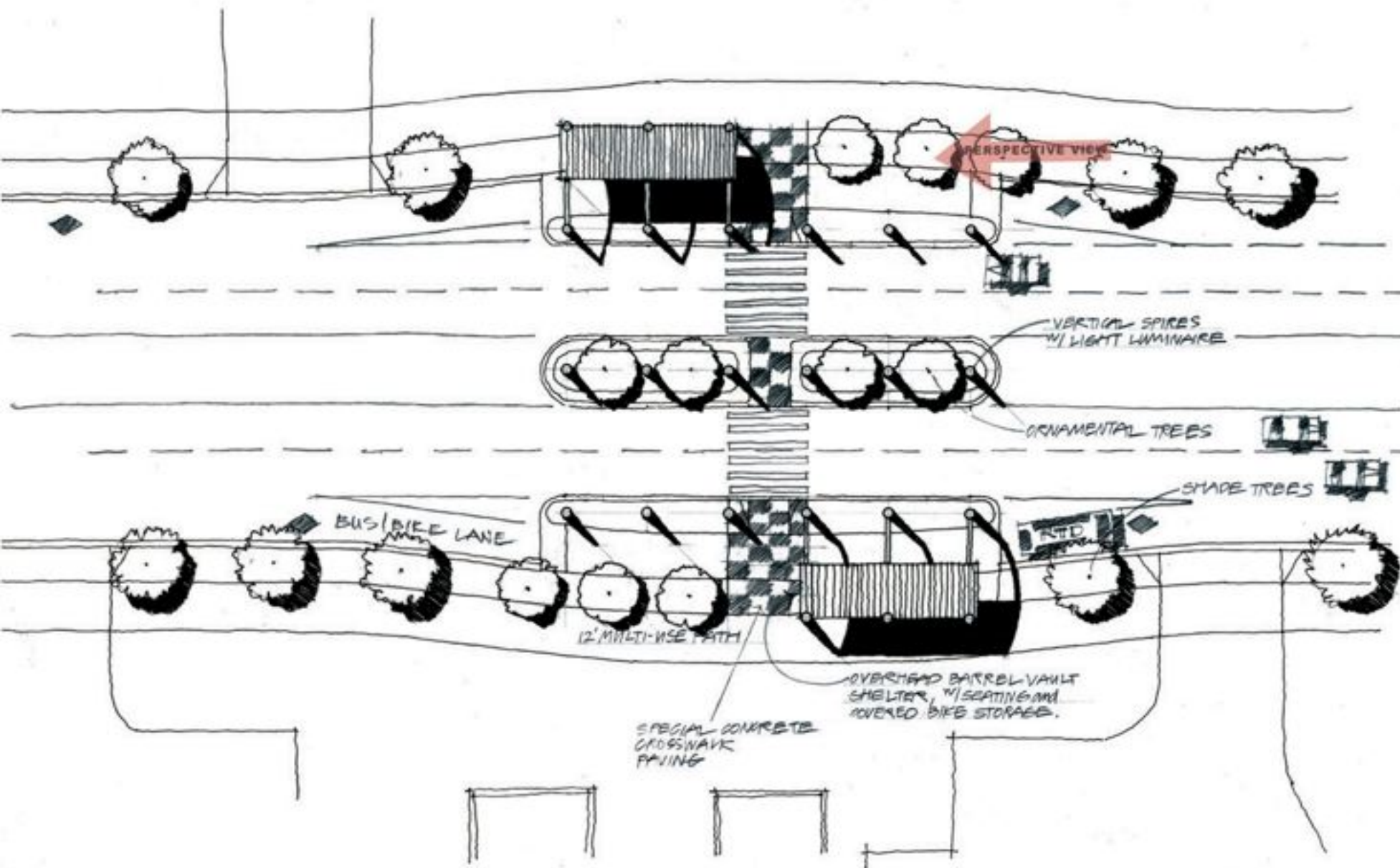


New Role for Transit on 28th

- Connecting our local high-frequency grid with regional service
- Travel time advantage at signals, improved facilities including lane treatments and stops
- Convenient, safe pedestrian and bicycle access



New Role for Frontage Road



North end: New role for the outside third lane



New role for outside third lane





Transportation Master Plan

- Hold vehicle miles traveled at 1994 levels
- Reduce SOV travel to 25% of all trips
- Continue reduction in mobile-source emissions
- No more than 20% roadways congested
- Create a multi-modal transportation network



Before



Under construction





Artist rendition





Artist rendition





Before



Under construction







2003 TMP Update:

■ Four Policy Focus Areas:

- Funding
- Regional Travel
- **Multimodal Corridors
aka “Complete Streets”**
- Transportation Demand Management (TDM)



















REDEVELOPMENT ALONG THE 28th ST FRONTAGE ROAD

Lazy L is currently in for review with proposed 103 student rentals/dorm and a coffee shop

Staff expects this building will be in review soon

Golden West is adding 57 units of senior housing in a major expansion

The Lotus building will be transformed into 70 to 100 housing units

The former Perkins restaurant is now a condominium unit



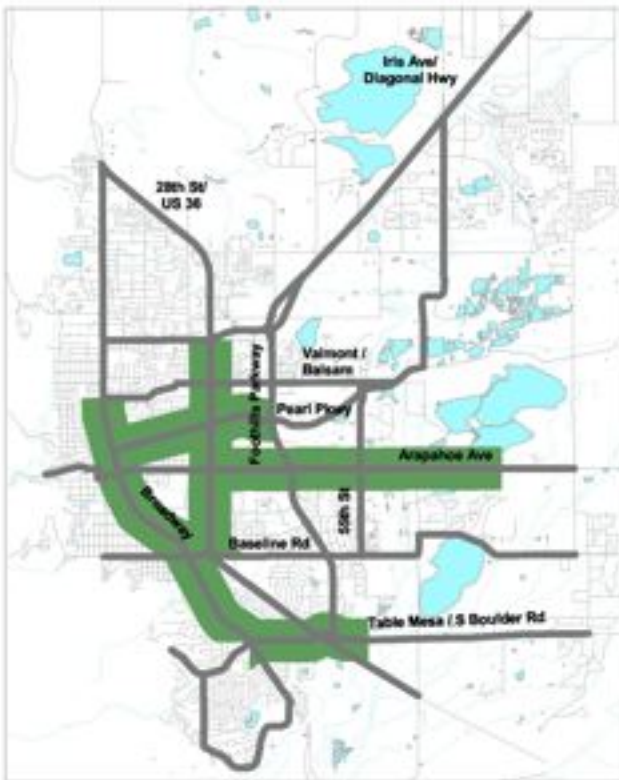
October 2005

Benefits of 28th St. Re-Invention

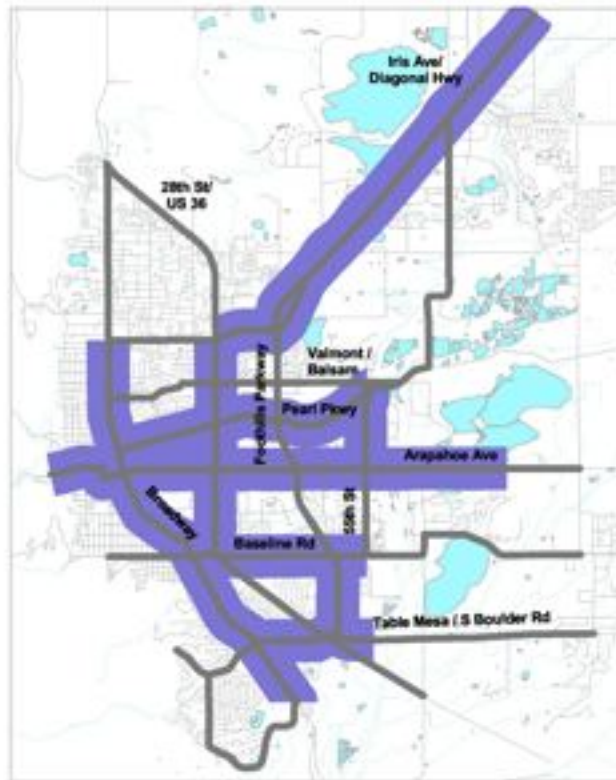
- Public process changed the way we think about 28th Street
- Character-building: CU and Community
- Creates sense of place
- Efficiency improvements for cars
- Creates multimodal options (local & regional)
 - Safer for all modes, encourages biking & walking
 - Transit on corridor for first time, with travel time advantage
 - Builds local connection to US 36 solution

2003 TMP

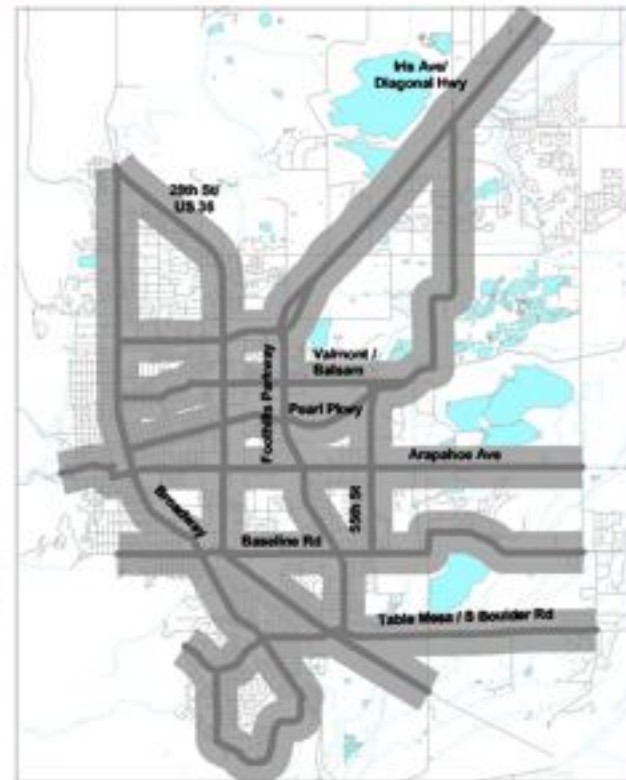
Complete Streets



Current Funding



Action Plan



Vision





COMP USA

1740

STORE HOURS

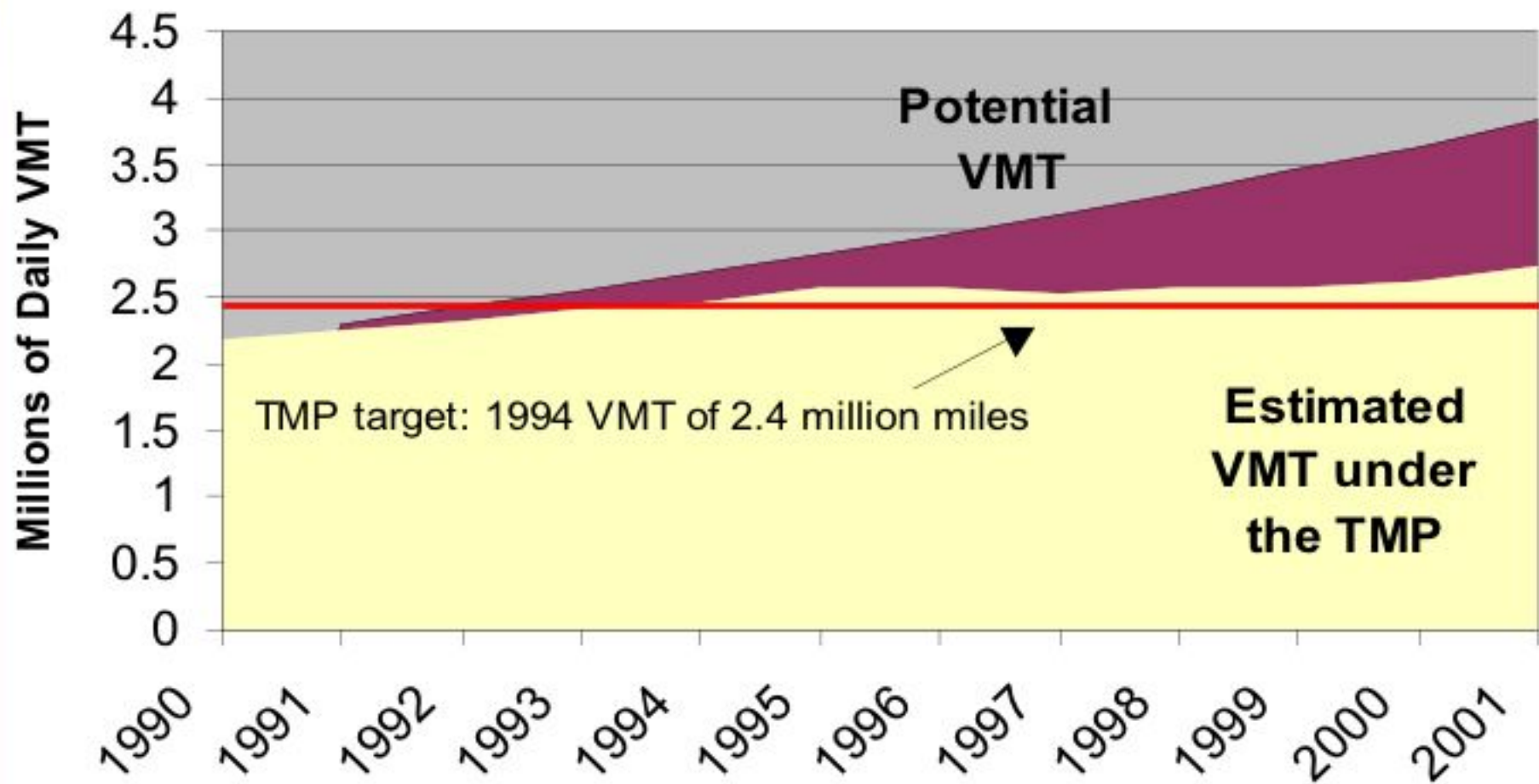
MON - FRI 10AM - 6PM

SAT 10AM - 5PM

SUN 10AM - 5PM

Employee survey results

- Latest survey in fall of 2005
- Drive alone trips for people who live and work in the Boulder valley dropped from 65% in 1991 to 53% in 2005





Broadway



Broadway

- Good bones
 - Older corridor
 - Mix of uses
 - Major activity centers with managed parking
- Pieces came together
 - College underpass in 1991
 - CU transportation planning
- Systematic improvements
 - Established good transit service
 - Pedestrian and bicycle facilities
 - Safe and convenient access and crossing opportunities



