

A Vision  
without Action is  
**Hallucination**

# Vision

Where do we want to be?

# Strategies

How are we going to get there?

# Actions

What are the specific implementation mechanisms?

# The Louisiana Speaks Regional Plan

Recover Sustainably



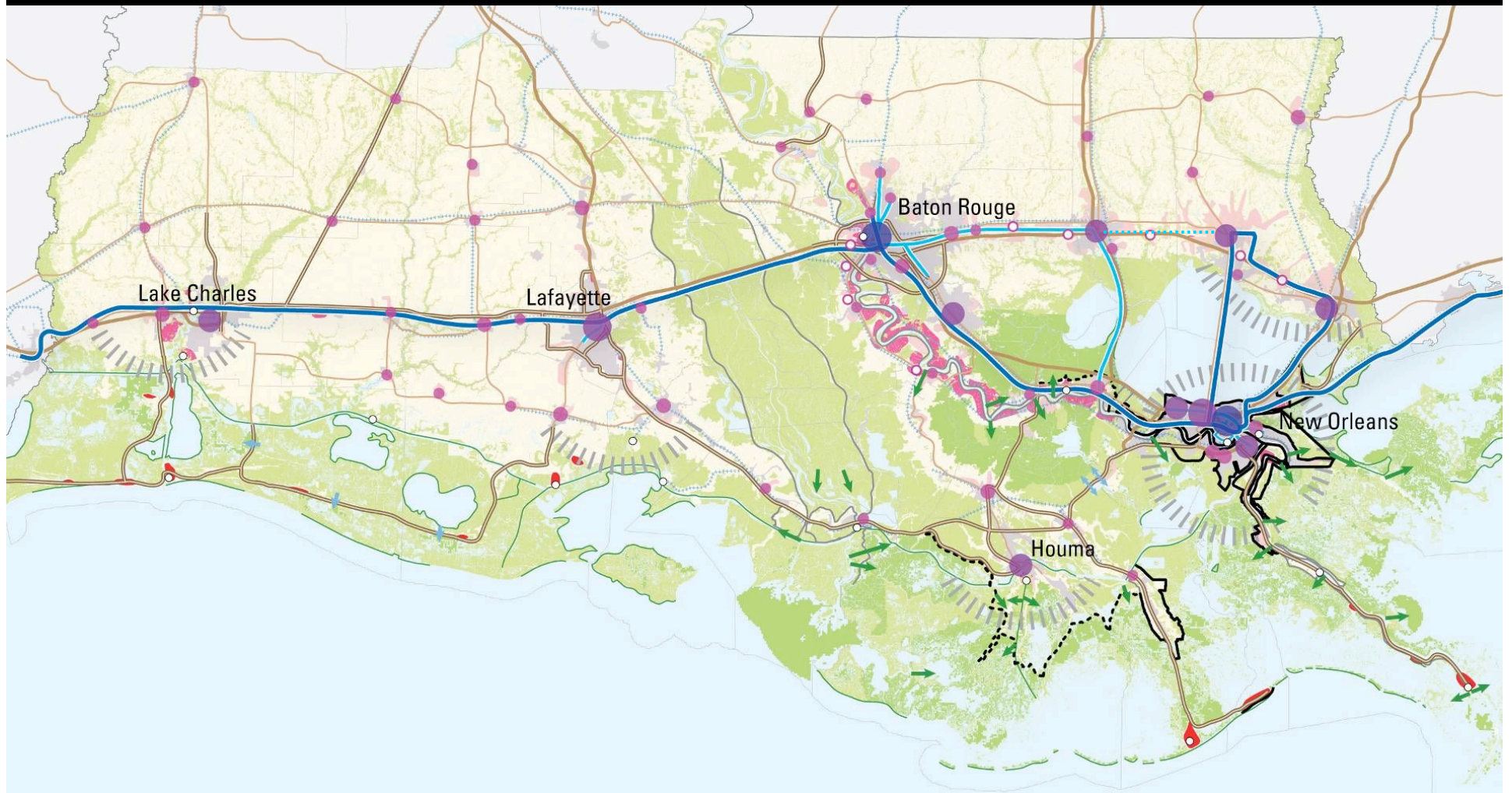
Grow Smarter

Think Regionally

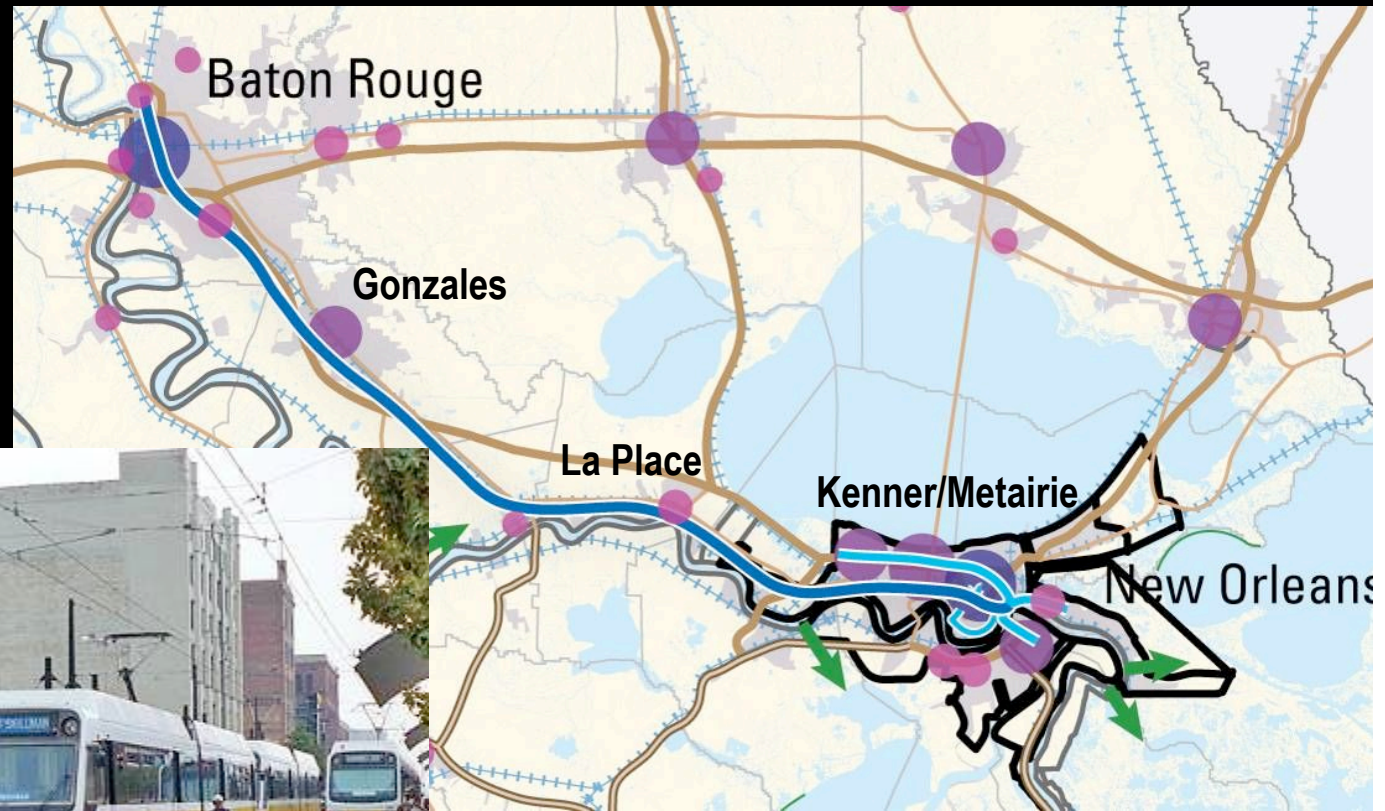
# Recover Sustainably



# Grow Smarter



# Use Public Investments to Drive Devt.



# Make “Infill” Development Easier

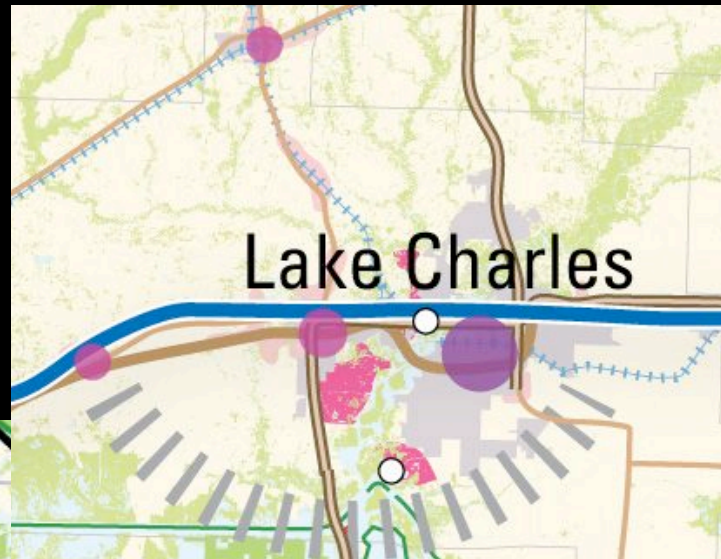


# Use State Trust Funds to Guide Devt.

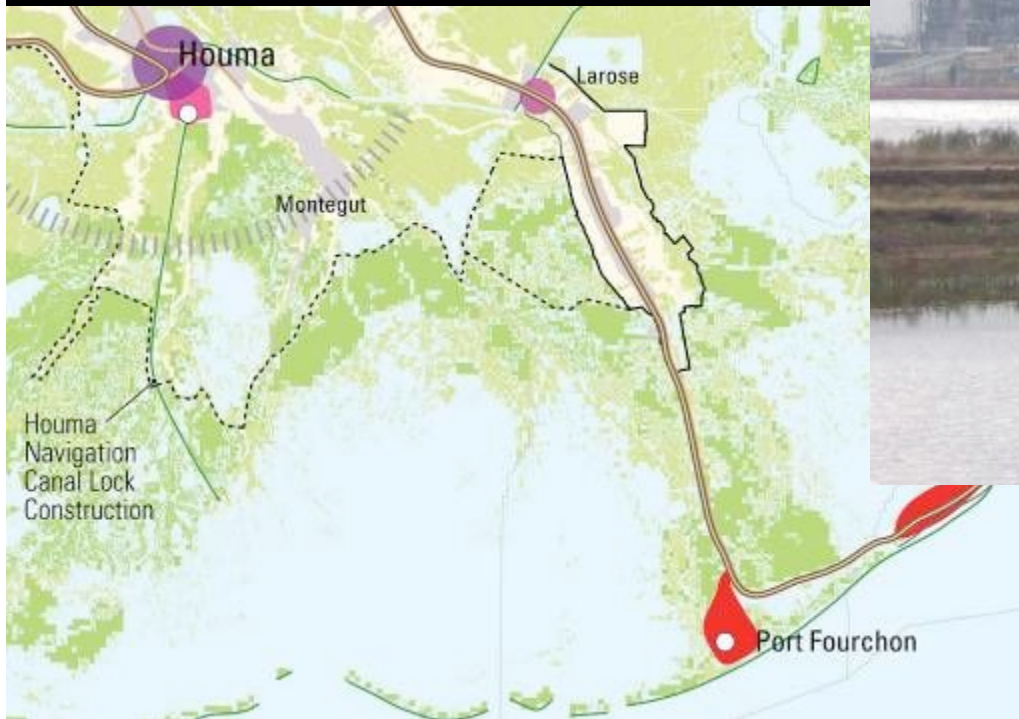




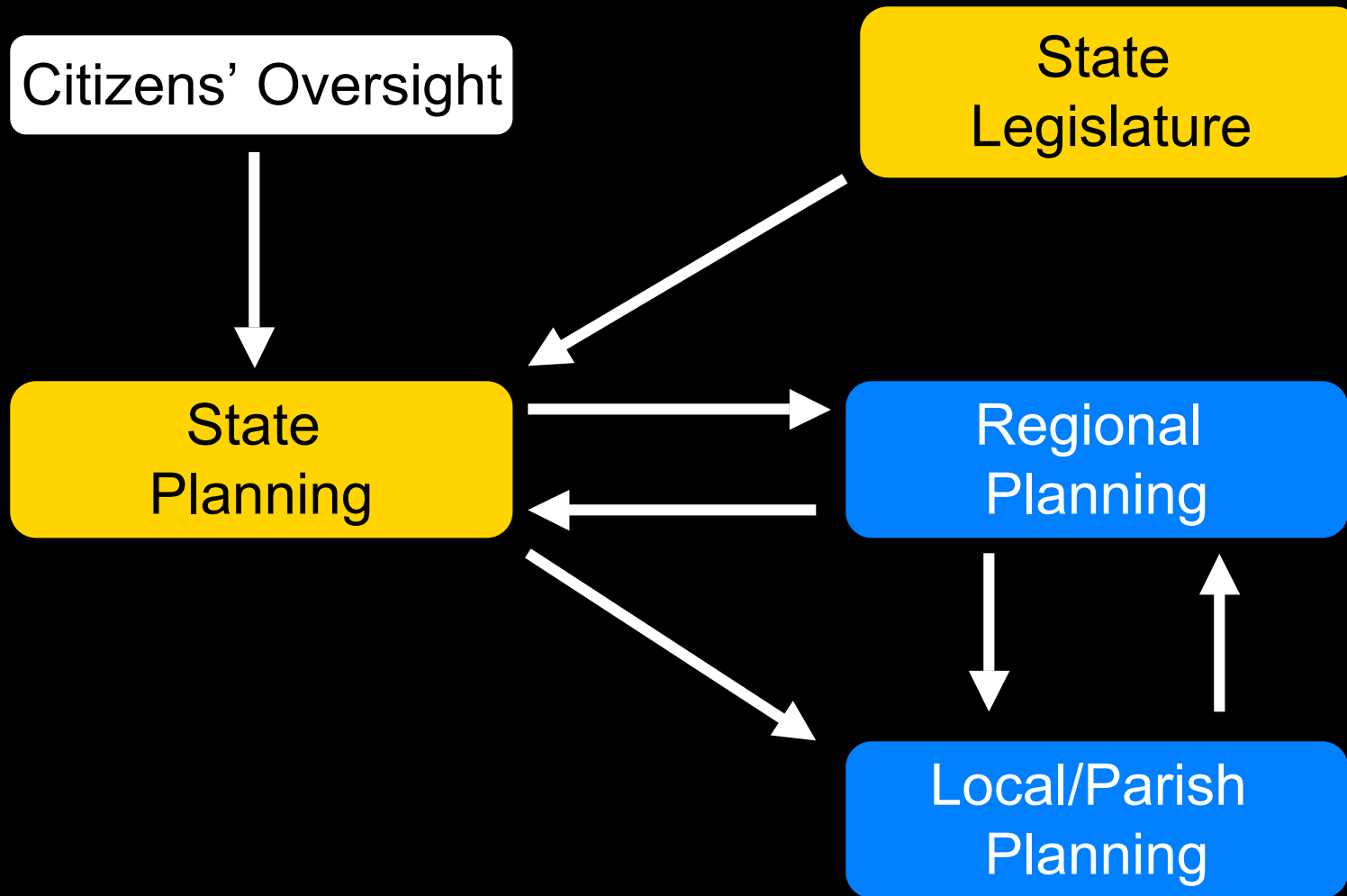
# Use Model Zoning to Shape Devt.



# Special Cases: Economic Devt. Zones



# A New Framework for Implementation



# State Planning Framework

- Not a regulatory system
- Driven by a State strategic vision
- Implemented by investment and incentive
- Regionally coordinated
- Locally implemented



# Legislative Action

- Study Resolutions
  - Create an Office of State Planning
  - Identify and Remove Obstacles to Infill Development
  - Identify Financing Mechanisms for Transit
  - Identify Financial Incentives for Building Code Compliance and Voluntary Mitigation Measures
- New State Trust Funds
  - Louisiana Community Reinvestment Trust Fund
  - Louisiana Conservation and Mitigation Trust Fund
- Supporting Related Efforts
  - CPRA adoption; insurance reform

# Louisiana Speaks Champions

## LOUISIANA SPEAKS CHAMPIONS

The creation of the Louisiana Speaks Regional Plan would not have been possible without the ongoing support, time, and thoughtful contributions of the many community, civic, and business leaders from across South Louisiana who have served as champions of this planning process.

The successful implementation of this plan will rely on their continued commitment—and yours. To get involved, learn more, and stay informed, go to [www.louisianaspeaks.org](http://www.louisianaspeaks.org).

## CITIZEN LEADERS

Elaine Abell, Attorney  
Clay Allen, Allen and Gooch  
Jane Arnette, South Central Industrial Association  
Eddie Ashworth, Louisiana Technology Park  
Janet Bean, Community Activist  
Kevin Belanger, South Central Planning and Development Commission  
Mark Bensabat, JP Morgan Chase  
Madhu Beriwal, Innovative Emergency Management  
Lee Berg, Lee Michael's Jewelry  
Steven Binger, Concordia Architects and Unified New Orleans Plan  
Brenda Birkett, PhD, McNeese State University  
Warren Birkett, Wybirk Associates  
Shelton Dennis Blunt, Phelps Dunbar  
Donald T. "Boysie" Bollinger, Bollinger Shipyards and LRA Boardmember  
Henri Roulet, LA 1 Coalition

Heather Sewell Day, Forum 35  
Yolanda Dixon, Louisiana State Senate  
Myrtle E.B. Dorsey, PhD, Baton Rouge Community College  
Michael Doucet, Musician  
James Doyle, Brenntag North America  
Alexis Duval, Duval & Shearer  
Jackie Edgar, Jackie Edgar Ford  
Barry Erwin, Council for a Better Louisiana  
Sammie Faulk, Creole Nature Trail All-American Road District  
William Fenstermaker, CH Fenstermaker and Associates  
Dede Ferrara, Junior League  
Teri Fontenot, Woman's Hospital  
Mark Ford, Coalition to Restore Coastal Louisiana  
Ron Forman, Audubon Institute  
Miles Forrest, Houma Daily Courier  
Donna Fraiche, Baker Donelson and LRA Boardmember  
Norman C. Francis, PhD, Xavier University and LRA Boardmember  
Ruthie Frierson, Citizens for 1 Greater New Orleans  
J.L. Garrett, DVM, Garrett Veterinary Clinic  
L.J. Gielen, Gielen Enterprises  
Brace Godfrey, Cyntreniks  
Hon. David Gorbaty, State 4th Circuit Court of Appeal and co-chair of St. Bernard Parish  
Citizens Recovery Committee  
Jim Grant, PhD, Vermilion Faith Community of Care  
Alice Greer, Community Leader  
Robert Greer, LEMIC Insurance Company  
Jamie Griffin, Raising Canes  
Lee Griffin, Bank One  
Marshall Guidry, Guidry, Chauvin and Taylor  
Rob Guidry, Greater Lafayette Chamber of Commerce  
Eligha Guillory, Jr., SWLA Center for Health Services  
Lucien Gunter, Jefferson Parish Economic Development Commission  
Cordell Haymon, SGS Corporation  
Raymond J. Hebert, Community Foundation of Acadiana  
Tom Henning, Cameron Communications and LRA Boardmember

Calvin Mackie, PhD, Tulane University and LRA Boardmember  
James Maurin, Stirling Properties  
Marty Mayer, Stirling Properties  
Suzanne Mestayer, AmSouth Bank  
Anne Milling, Women of the Storm  
R. King Milling, America's Wetlands and Whitney National Bank  
Hank Miltenberger, Gilsbar Inc.  
Daniel Montelaro, Regions Bank  
Stephen Moret, Baton Rouge Area Chamber  
Elemore Morgan, Jr., Artist  
Chet Morrison, Chet Morrison Contractors and LRA Boardmember  
Canim Morton, Commercial Properties Realty Trust  
Jake Netterville, Postlethwaite and Netterville  
John Noland, Noland Investments  
Virginia Noland  
Anthony Patton, Ebonetworks  
Huel Perkins, PhD, Huel D. Perkins and Associates  
Hon. Freddie Pitcher, Jr., Southern University  
Jim Porter, Louisiana Mid Continent Oil & Gas Association  
Richard Putnam, Jr., Putnam Law Firm  
Lee C. Reid, Adams and Reese  
Jennifer Eplett Reilly, City Year Louisiana  
Sean Reilly, Lamar Advertising and LRA Boardmember  
Todd Richard, F. A. Richard & Associates  
Bill Rouselle, Bright Moments Public Relations  
Tom Sammons, University of Louisiana at Lafayette  
Michael Sartisky, PhD, Louisiana Endowment for the Humanities  
Matt Stuller, Stuller Inc. and LRA Boardmember  
H. Norman Saurage III, Community Coffee Company  
R. Larry Schmidt, Trust for Public Land  
Nathan Shroyer, Neighborhood Planning Network  
Christel Slaughter, PhD, SSA Consultants  
Rev. Charles T. Smith, Shiloh Missionary Baptist Church  
Clifford Smith, T. Baker Smith, Inc.  
John E. Smith, Whitney Bank and LRA Boardmember  
Edna Soarin, Baton Rouge Area Foundation

# LOUISIANA SPEAKS: OUR VISION

